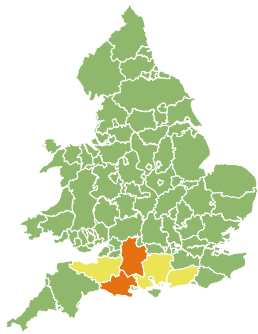


Flood Guidance Statement

10:30hrs Thursday 19 February 2026

FLOOD
FORECASTING
CENTRE

A working partnership between

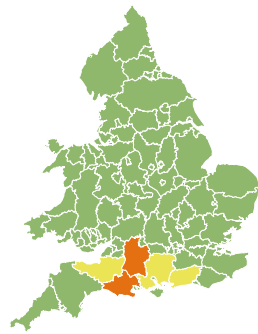


Thursday

19 Feb 2026 10:30-23:59

Trend since last FGS

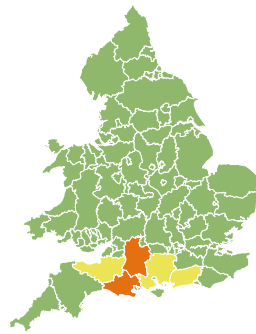
Decreased



Friday

20 Feb 2026

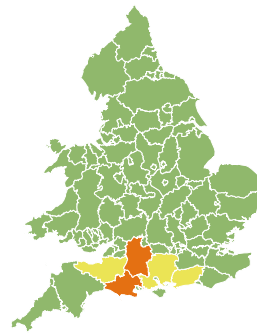
Steady



Saturday

21 Feb 2026

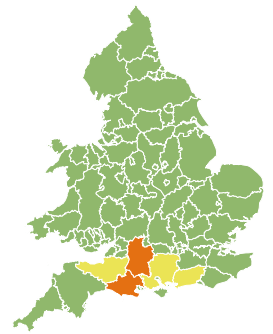
Increased



Sunday

22 Feb 2026

Increased



Monday

23 Feb 2026

Steady



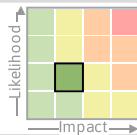
Significant groundwater flooding impacts are probable in Dorset and Wiltshire and significant river flooding impacts are possible in Somerset during the next five days. The overall flood risk is MEDIUM.

Specific Areas of Concern Map 1 - Thursday 19 to Friday 20 February 2026

RISK AREA F

Impact **MINOR**

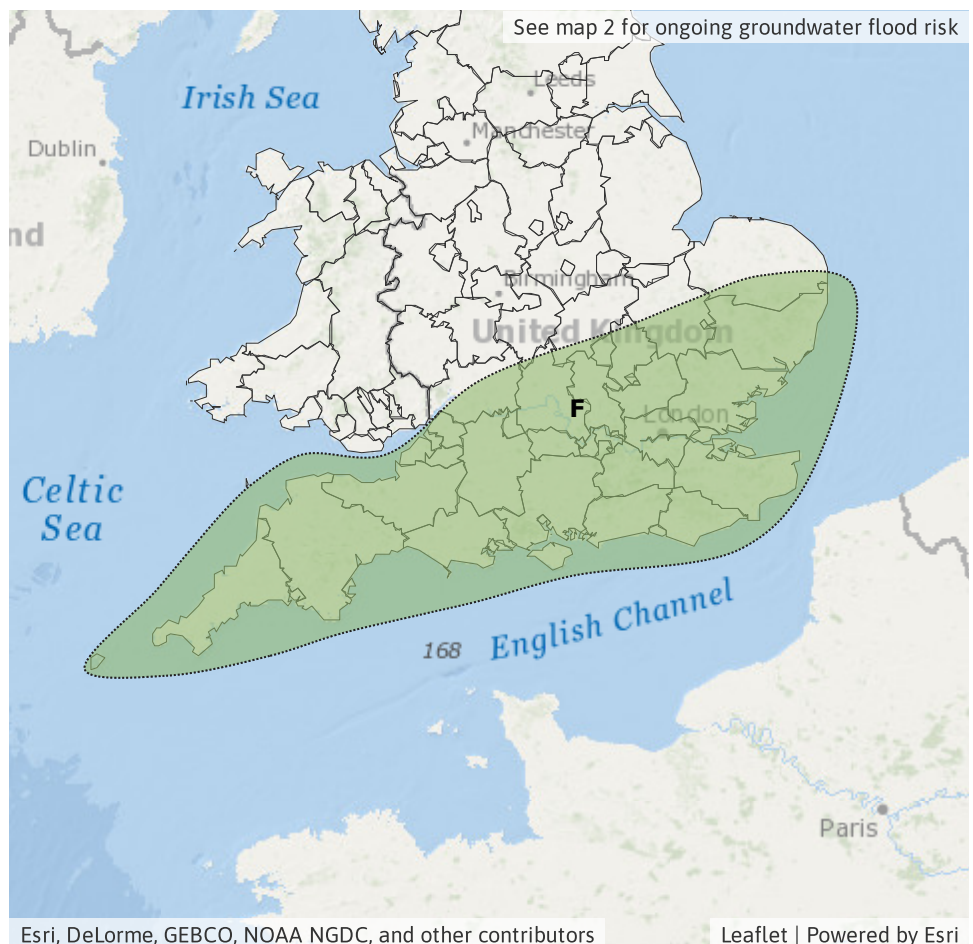
Likelihood **LOW**



Source River

Likely duration 2 Days

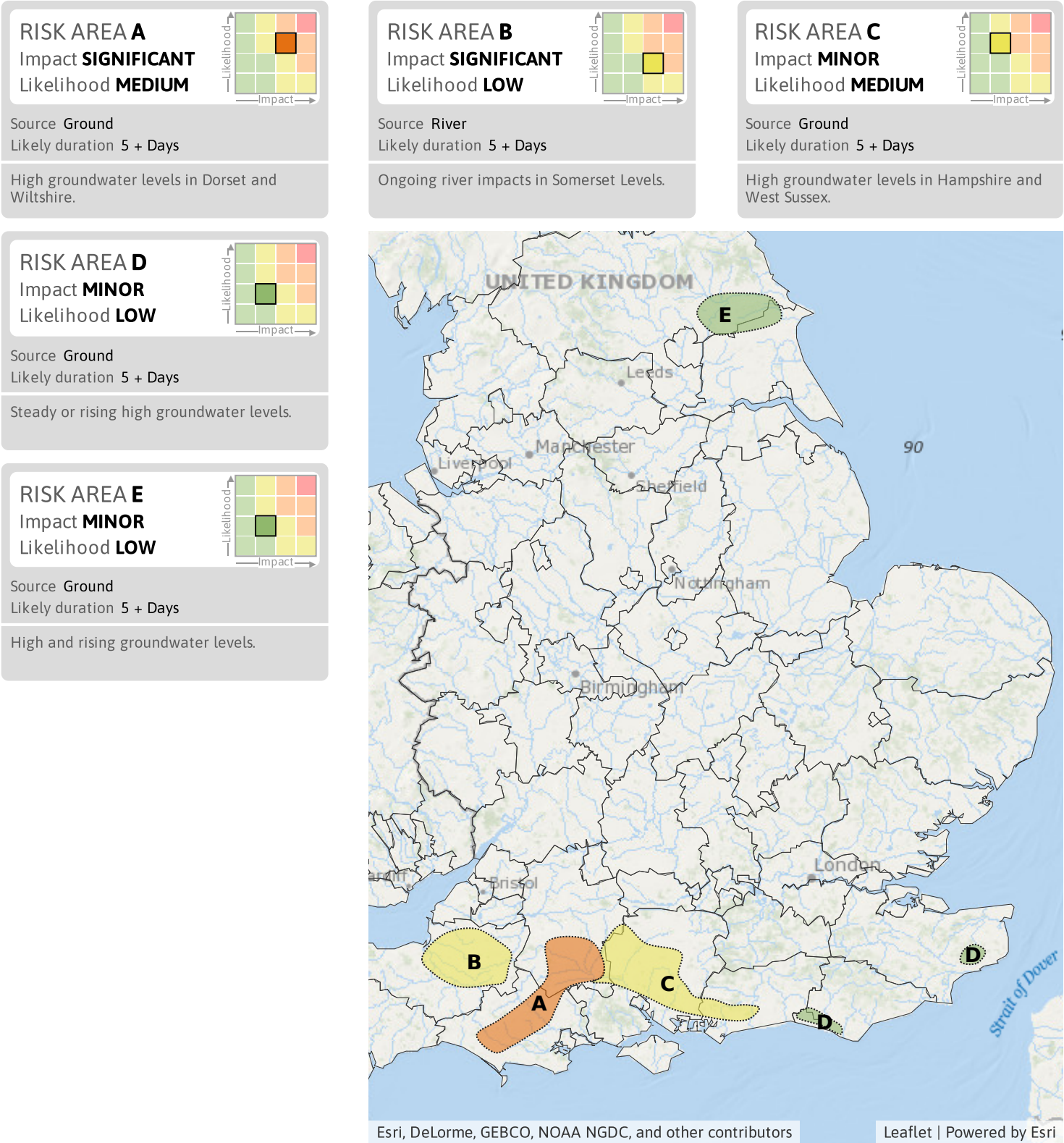
Ongoing minor river impacts on Thursday and on slower responding rivers on Friday.



Flood Guidance Statement

10:30hrs Thursday 19 February 2026

Specific Areas of Concern Map 2 - Thursday 19 to Monday 23 February 2026



Assessment of flood risk



Groundwater

The groundwater flood risk is MEDIUM for the next five days.

Significant groundwater flooding impacts are probable in parts of Dorset and Wiltshire, with minor impacts probable for parts of Hampshire and West Sussex for the next five days.

Minor groundwater flooding impacts are also possible elsewhere in parts of England due to high and steadily rising levels. See Specific Areas of Concern Map.



Rivers

The river flood risk is LOW for the next five days.

Ongoing significant river flooding impacts remain possible on the Somerset Levels for the next five days.

Ongoing minor river flooding impacts are possible across the South and East of England today (Thursday) and on slower responding rivers into Friday. See Specific Areas of Concern Map.

Minor river flooding is also possible but not expected across parts of England and Wales on Sunday as heavy rain spreads across the South of England.



Surface water

The surface water flood risk is VERY LOW for the next five days.

Minor surface water flooding impacts are possible but not expected across parts of England and Wales on Saturday evening and Sunday as heavy rain spreads across the South of England.

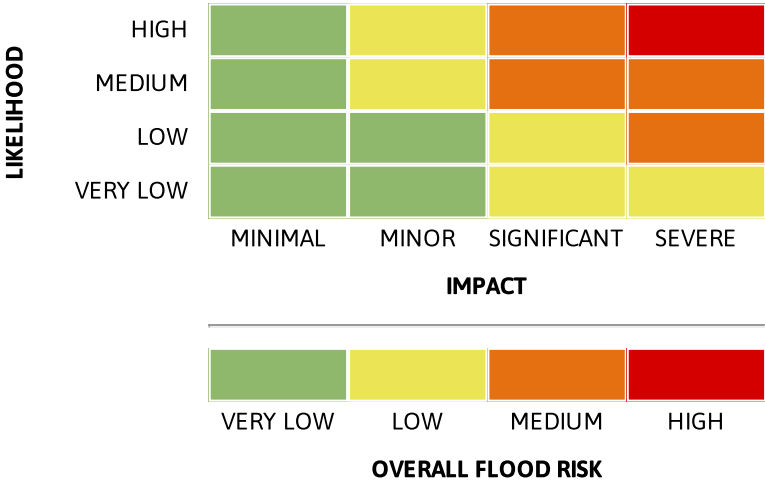
Impacts could include localised flooding from urban and fast responding smaller watercourses/catchments, drains, channels and flooding from overland flow.



Coastal/Tidal

The coastal/tidal flood risk is VERY LOW for the next five days.

Flood risk matrix



Summary of potential impacts

- MINIMAL**
Isolated and minor flooding of low-lying land and roads
Isolated spray/wave on coastal promenades
Little or no disruption to travel, but wet road surfaces
- MINOR**
Localised flooding of land and roads
Flooding affecting individual properties
Disruption to travel and key sites in flood plans
- SIGNIFICANT**
Flooding affecting parts of communities
Possible danger to life and damage to buildings/structures
Disruption to travel and key sites in flood plans
- SEVERE**
Danger to life, severe disruption to travel
Widespread flooding affecting whole communities
Widespread disruption or loss of infrastructure
Large scale evacuation of properties possible

Next statement due **10:30hrs Friday 20 February 2026 (all times are local)**

Contact details **Flood Forecasting Centre Duty Hydrometeorologist - 0330 135 4400**

More information <https://www.gov.uk/government/organisations/flood-forecasting-centre>