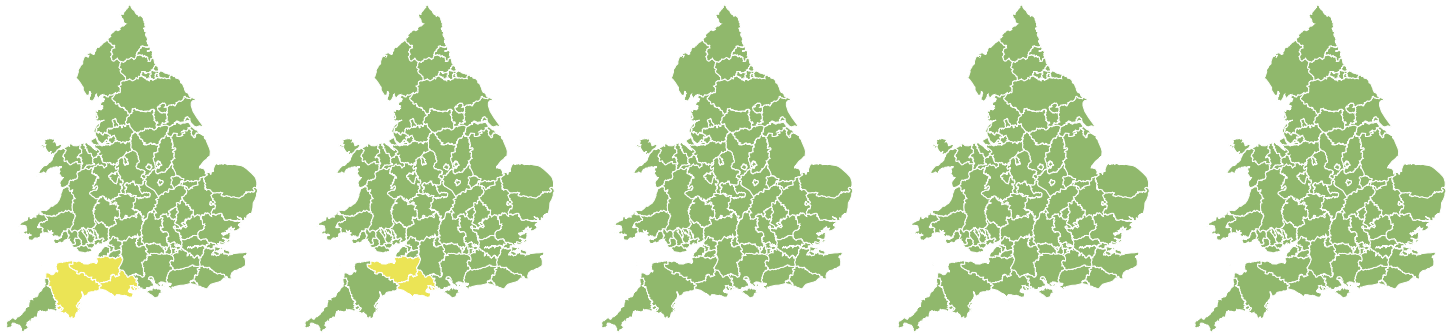


Flood Guidance Statement

10:30hrs Monday 24 February 2025



Monday

24 Feb 2025 10:30-23:59

Trend since last FGS

Decreased ↓

Tuesday

25 Feb 2025

Increased ↑

Wednesday

26 Feb 2025

Steady →

Thursday

27 Feb 2025

Steady →

Friday

28 Feb 2025

Steady →

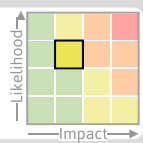
Minor river flooding impacts are probable in parts of South West England today (Monday) and tomorrow, and possible more widely in parts of Wales and the South of England. The overall flood risk for England and Wales is LOW.

Specific Areas of Concern Map 1 - Monday 24 February 2025

RISK AREA A

Impact **MINOR**

Likelihood **MEDIUM**



Source River

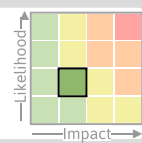
Likely duration 2 Days

Rivers continuing to respond following recent heavy rain

RISK AREA B

Impact **MINOR**

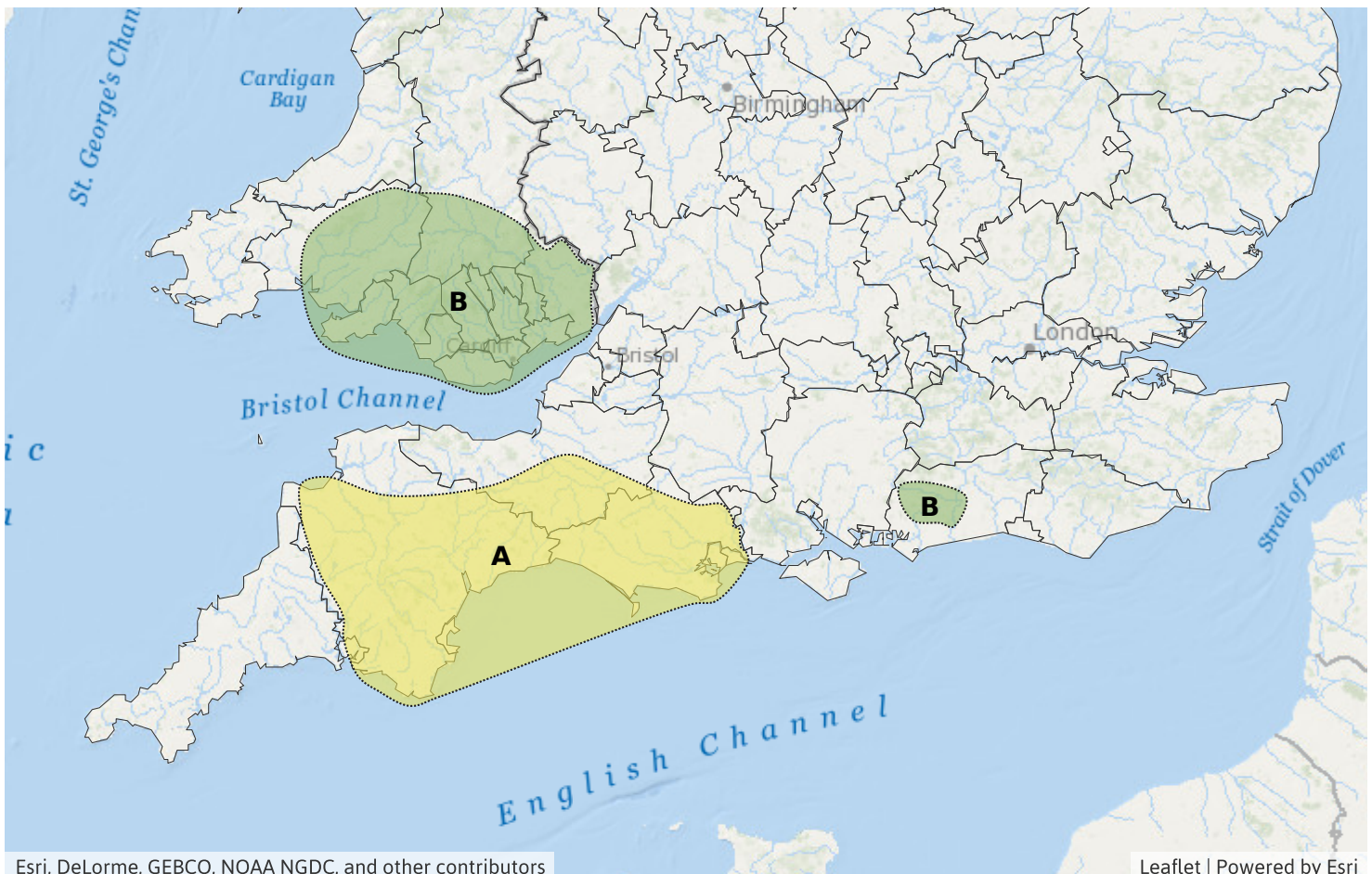
Likelihood **LOW**



Source River

Likely duration 1 Day

Minor river flooding impacts possible following recent heavy rain.

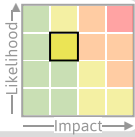


Flood Guidance Statement

10:30hrs Monday 24 February 2025

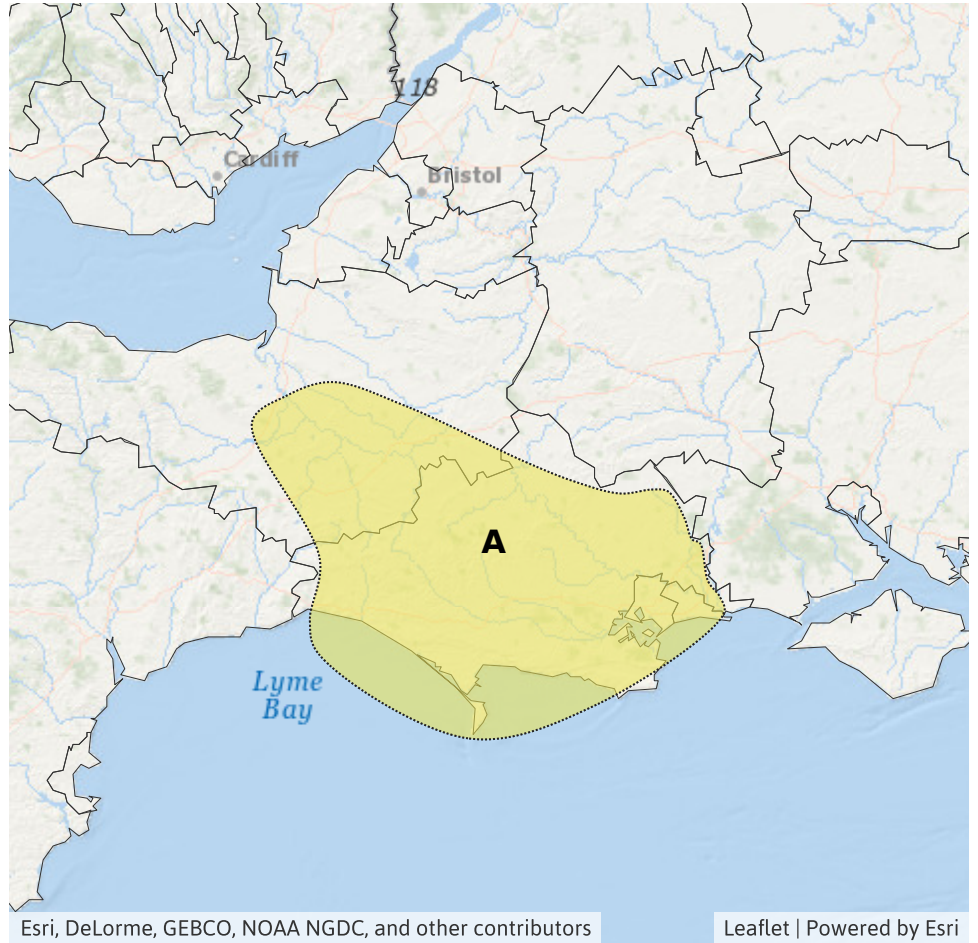
Specific Areas of Concern Map 2 - Tuesday 25 February 2025

RISK AREA A
Impact **MINOR**
Likelihood **MEDIUM**



Source River
Likely duration 2 Days

Rivers continuing to remain high, especially for groundwater fed rivers



Assessment of flood risk



Rivers

The river flood risk is LOW today (Monday) and tomorrow.

Minor river flooding impacts remain probable across parts of the South of England and South Wales today following recent heavy and persistent rain, with the risk of flooding continuing into tomorrow for parts of South West England. See Specific Areas of Concern Map.

Minor river flooding impacts are also possible but not expected across parts of England and Wales on Wednesday.



Surface water

The surface water flood risk is VERY LOW for the next five days.

Minor surface water flooding impacts are possible but not expected across parts of England and Wales on Wednesday.

Impacts could include localised flooding from urban and fast responding smaller watercourses/catchments, drains, channels and flooding from overland flow.



Groundwater

The groundwater flood risk is VERY LOW for the next five days.



Coastal/Tidal

The coastal/tidal flood risk is VERY LOW for the next five days.

Flood Guidance Statement

10:30hrs Monday 24 February 2025

Flood risk matrix



Summary of potential impacts

MINIMAL

Isolated and minor flooding of low-lying land and roads
Isolated spray/wave on coastal promenades
Little or no disruption to travel, but wet road surfaces

MINOR

Localised flooding of land and roads
Flooding affecting individual properties
Disruption to travel and key sites in flood plans

SIGNIFICANT

Flooding affecting parts of communities
Possible danger to life and damage to buildings/structures
Disruption to travel and key sites in flood plans

SEVERE

Danger to life, severe disruption to travel
Widespread flooding affecting whole communities
Widespread disruption or loss of infrastructure
Large scale evacuation of properties possible

Next statement due **10:30hrs Tuesday 25 February 2025 (all times are local)**

Contact details **Flood Forecasting Centre Duty Hydrometeorologist - 0330 135 4400**

More information <https://www.gov.uk/government/organisations/flood-forecasting-centre>