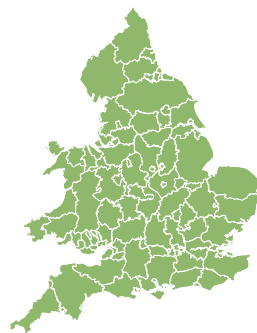
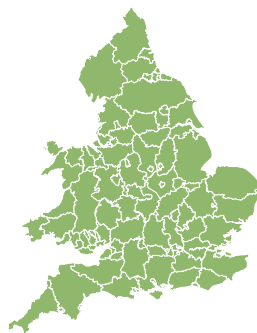
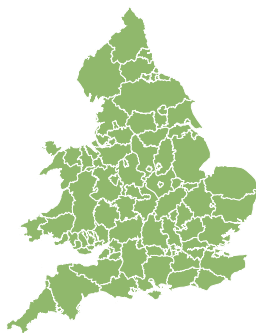
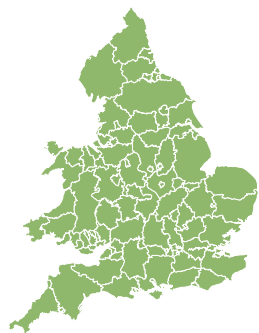
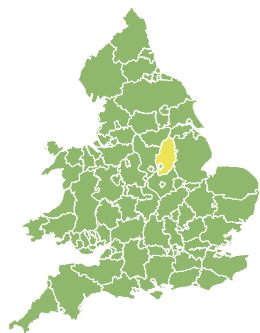


# Flood Guidance Statement

10:30hrs Friday 10 January 2025



Friday

10 Jan 2025 10:30-23:59

Trend since last FGS

Steady



Saturday

11 Jan 2025

Steady



Sunday

12 Jan 2025

Steady



Monday

13 Jan 2025

Steady



Tuesday

14 Jan 2025

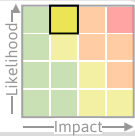
Steady



Ongoing minor river flooding impacts are expected along the River Trent, and new river flooding impacts are possible but not expected in parts of the Yorkshire and the Humber region on Monday and Tuesday. The overall flood risk is LOW.

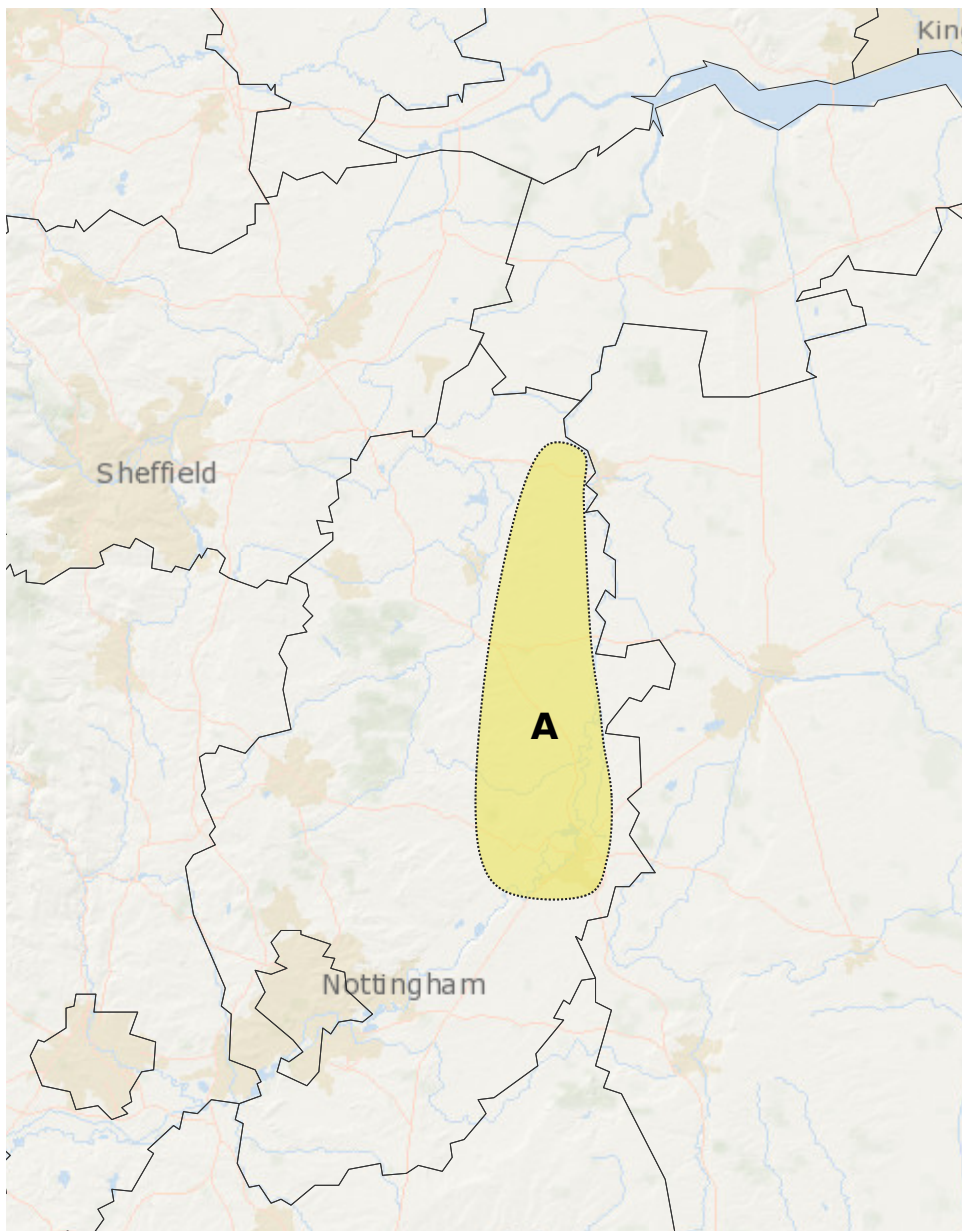
## Specific Areas of Concern Map 1 - Friday 10 January 2025

**RISK AREA A**  
Impact **MINOR**  
Likelihood **HIGH**



Source River  
Likely duration 1 Day

Ongoing river flooding impacts on the River Trent.



## Assessment of flood risk



### Rivers

---

The river flood risk is LOW today (Friday).

Ongoing minor river flooding impacts are expected along the River Trent today. See Specific Areas of Concern Map.

There is very low likelihood of minor river flooding impacts from combined rainfall and snowmelt on Monday and into Tuesday across parts of the Yorkshire and the Humber region.



### Groundwater

---

The groundwater flood risk is VERY LOW for the next five days.

Localised groundwater flooding impacts are possible but not expected from today (Friday) in parts of the South of England.



### Surface water

---

The surface water flood risk is VERY LOW for the next five days.



### Coastal/Tidal

---

The coastal/tidal flood risk is VERY LOW for the next five days.

# Flood Guidance Statement

10:30hrs Friday 10 January 2025

## Flood risk matrix



## Summary of potential impacts

### MINIMAL

Isolated and minor flooding of low-lying land and roads  
Isolated spray/wave on coastal promenades  
Little or no disruption to travel, but wet road surfaces

### MINOR

Localised flooding of land and roads  
Flooding affecting individual properties  
Disruption to travel and key sites in flood plans

### SIGNIFICANT

Flooding affecting parts of communities  
Possible danger to life and damage to buildings/structures  
Disruption to travel and key sites in flood plans

### SEVERE

Danger to life, severe disruption to travel  
Widespread flooding affecting whole communities  
Widespread disruption or loss of infrastructure  
Large scale evacuation of properties possible

Next statement due **10:30hrs Saturday 11 January 2025 (all times are local)**

Contact details **Flood Forecasting Centre Duty Hydrometeorologist - 0330 135 4400**

More information <https://www.gov.uk/government/organisations/flood-forecasting-centre>