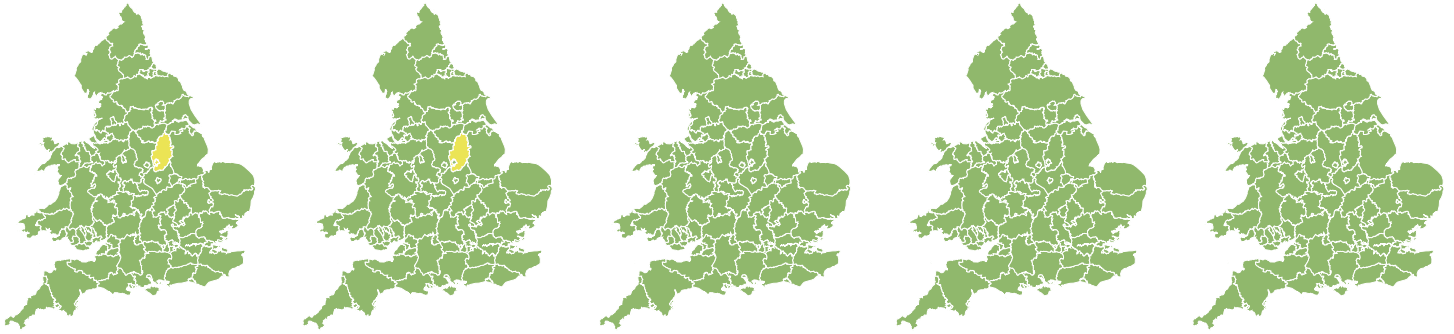


Flood Guidance Statement

10:30hrs Thursday 09 January 2025



Thursday

9 Jan 2025 10:30-23:59
Trend since last FGS

Steady →

Friday

10 Jan 2025

Increased ↑

Saturday

11 Jan 2025

Steady →

Sunday

12 Jan 2025

Steady →

Monday

13 Jan 2025

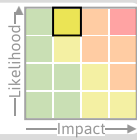
Steady →

Ongoing minor river flooding impacts are expected along the River Trent until Friday, with ongoing minor river impacts also possible on some other rivers in England until Friday. The overall flood risk is LOW.

Specific Areas of Concern Map 1 - Thursday 9 January 2025

RISK AREA A

Impact **MINOR**
Likelihood **HIGH**



Source River
Likely duration 2 Days

Ongoing river flooding impacts on the River Trent.

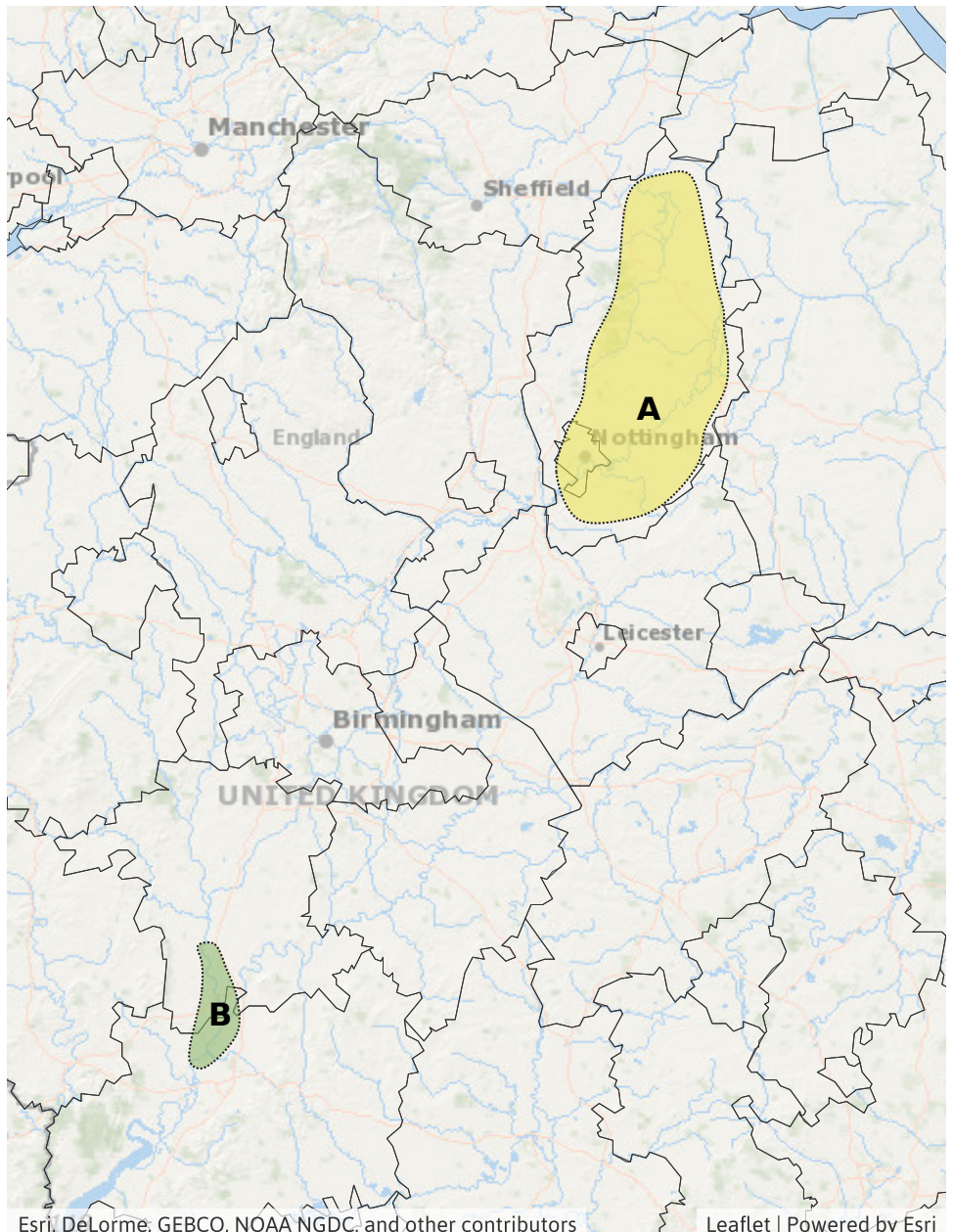
RISK AREA B

Impact **MINOR**
Likelihood **LOW**



Source River
Likely duration 1 Day

Ongoing minor flooding impacts along the River Severn.

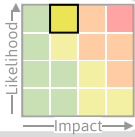


Flood Guidance Statement

10:30hrs Thursday 09 January 2025

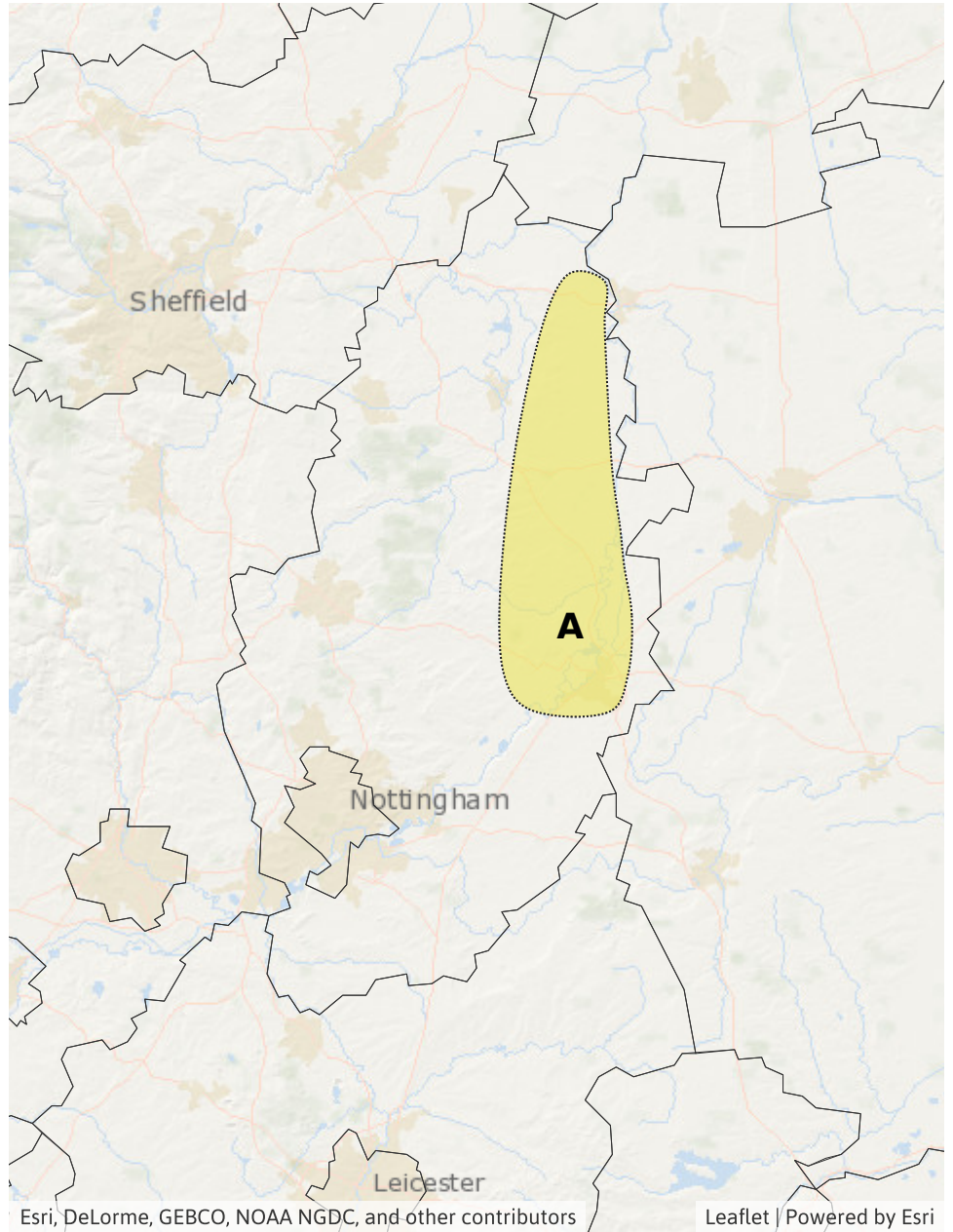
Specific Areas of Concern Map 2 - Friday 10 January 2025

RISK AREA A
Impact **MINOR**
Likelihood **HIGH**



Source River
Likely duration 2 Days

Ongoing river flooding impacts on the River Trent.



Assessment of flood risk



Rivers

The river flood risk is LOW today (Thursday) and on Friday.

Ongoing minor river flooding impacts are expected along the River Trent today and on Friday. Ongoing minor river flooding impacts are also possible along parts of the River Severn today. See Specific Areas of Concern Maps.

Ongoing minor river flooding impacts are possible but not expected along some rivers in the Yorkshire and the Humber region today and on Friday.



Groundwater

The groundwater flood risk is VERY LOW for the next five days.

Localised groundwater flooding impacts are possible but not expected from Friday onwards in parts of the South of England.



Surface water

The surface water flood risk is VERY LOW for the next five days.



Coastal/Tidal

The coastal/tidal flood risk is VERY LOW for the next five days.

Flood Guidance Statement

10:30hrs Thursday 09 January 2025

Flood risk matrix



Summary of potential impacts

MINIMAL

Isolated and minor flooding of low-lying land and roads
Isolated spray/wave on coastal promenades
Little or no disruption to travel, but wet road surfaces

MINOR

Localised flooding of land and roads
Flooding affecting individual properties
Disruption to travel and key sites in flood plans

SIGNIFICANT

Flooding affecting parts of communities
Possible danger to life and damage to buildings/structures
Disruption to travel and key sites in flood plans

SEVERE

Danger to life, severe disruption to travel
Widespread flooding affecting whole communities
Widespread disruption or loss of infrastructure
Large scale evacuation of properties possible

Next statement due **10:30hrs Friday 10 January 2025 (all times are local)**

Contact details **Flood Forecasting Centre Duty Hydrometeorologist - 0330 135 4400**

More information <https://www.gov.uk/government/organisations/flood-forecasting-centre>