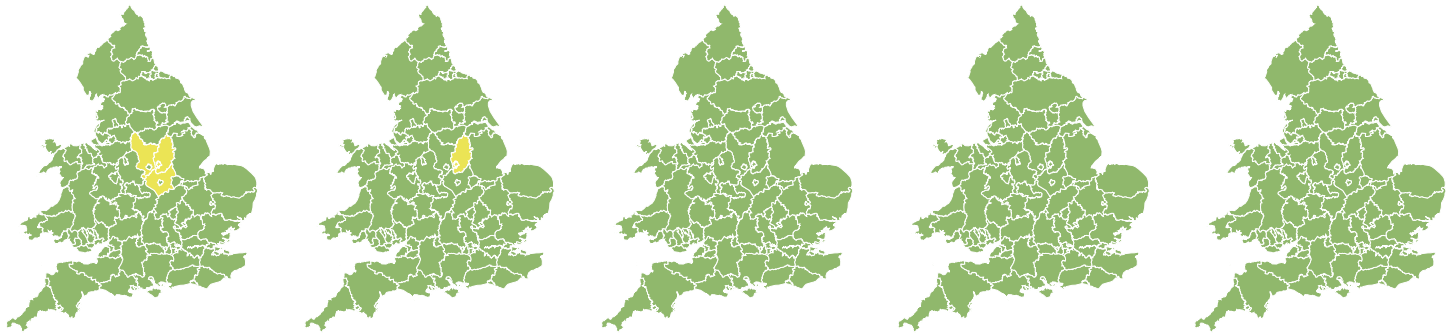


Flood Guidance Statement

10:30hrs Wednesday 08 January 2025



Wednesday

8 Jan 2025 10:30-23:59

Trend since last FGS

Steady →

Thursday

9 Jan 2025

Steady →

Friday

10 Jan 2025

Steady →

Saturday

11 Jan 2025

Steady →

Sunday

12 Jan 2025

Steady →

Ongoing minor river flooding impacts are expected in the Midlands until Thursday, with minor impacts possible more widely along other major rivers today (Wednesday). The overall flood risk is LOW.

Specific Areas of Concern Map 1 - Wednesday 8 and Thursday 9 January 2025

RISK AREA A

Impact **MINOR**
Likelihood **HIGH**

Source River
Likely duration 2 Days

Ongoing river flooding impacts following recent heavy rain and snowmelt.

RISK AREA B

Impact **MINOR**
Likelihood **LOW**

Source River
Likely duration 2 Days

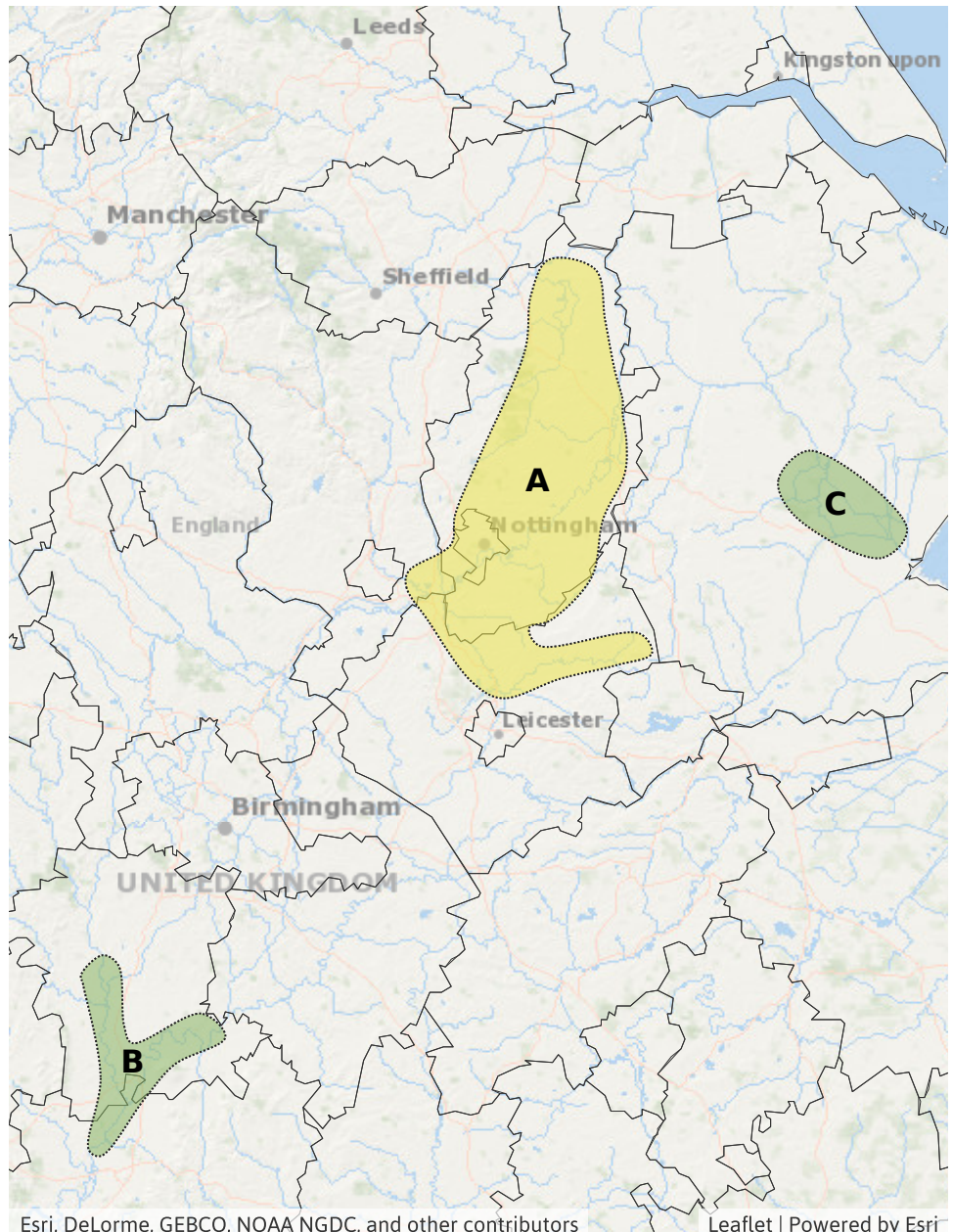
Ongoing minor flooding impacts along the R. Severn and R. Avon

RISK AREA C

Impact **MINOR**
Likelihood **LOW**

Source River
Likely duration 1 Day

Ongoing minor flooding impacts along the River Witham today



Esri, DeLorme, GEBCO, NOAA NGDC, and other contributors

Leaflet | Powered by Esri

Assessment of flood risk



Rivers

The river flood risk is LOW today (Wednesday) and Thursday.

Ongoing minor river flooding impacts are expected in parts of the Midlands today and tomorrow and possible more widely. See Specific Areas of Concern Map. This is due to recent heavy rain combined with melting snow.

Minor river flooding impacts are possible but not expected in parts of the North East of England today and in the South of England later today into Thursday.



Surface water

The surface water flood risk is VERY LOW for the next five days.

Minor surface water flooding impacts are possible but not expected in parts of the South of England later today (Wednesday) and Thursday.

Impacts could include localised flooding from urban and fast responding smaller watercourses/catchments, drains, channels and flooding from overland flow.



Groundwater

The groundwater flood risk is VERY LOW for the next five days.

Localised groundwater flooding impacts are possible but not expected from Friday onwards in parts of Dorset, Wiltshire and Hampshire.



Coastal/Tidal

The coastal/tidal flood risk is VERY LOW for the next five days.

Flood Guidance Statement

10:30hrs Wednesday 08 January 2025

Flood risk matrix



Summary of potential impacts

MINIMAL

Isolated and minor flooding of low-lying land and roads
Isolated spray/wave on coastal promenades
Little or no disruption to travel, but wet road surfaces

MINOR

Localised flooding of land and roads
Flooding affecting individual properties
Disruption to travel and key sites in flood plans

SIGNIFICANT

Flooding affecting parts of communities
Possible danger to life and damage to buildings/structures
Disruption to travel and key sites in flood plans

SEVERE

Danger to life, severe disruption to travel
Widespread flooding affecting whole communities
Widespread disruption or loss of infrastructure
Large scale evacuation of properties possible

Next statement due **10:30hrs Thursday 09 January 2025 (all times are local)**

Contact details **Flood Forecasting Centre Duty Hydrometeorologist - 0330 135 4400**

More information <https://www.gov.uk/government/organisations/flood-forecasting-centre>