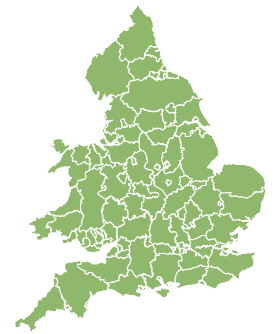
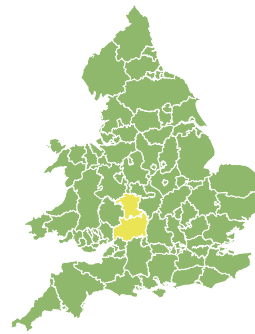
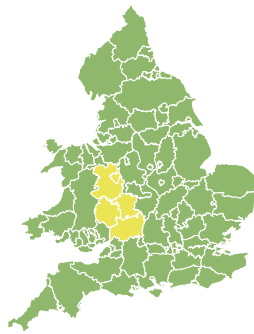
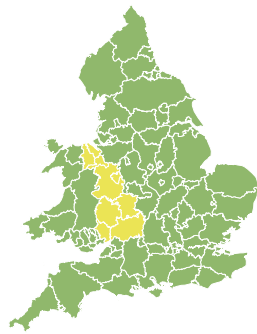
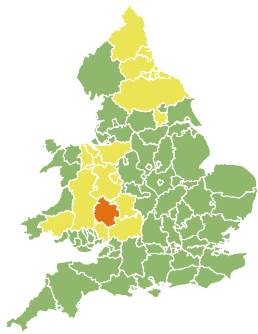


# Flood Guidance Statement

15:30hrs Sunday 08 December 2024



Sunday

8 Dec 2024 15:30-23:59

Trend since last FGS

Steady



Monday

9 Dec 2024

Steady



Tuesday

10 Dec 2024

Steady



Wednesday

11 Dec 2024

Steady



Thursday

12 Dec 2024

Steady



Significant river flooding impacts are probable in Hereford today (Sunday) from Storm Darragh. The overall flood risk is MEDIUM.

## Specific Areas of Concern Map 1 - Sunday 8 December 2024 (showing changes to morning FGS)

**RISK AREA A**  
Impact **SIGNIFICANT**  
Likelihood **MEDIUM**

Source River  
Likely duration 1 Day

Ongoing river impacts in Hereford.

**RISK AREA B**  
Impact **MINOR**  
Likelihood **HIGH**

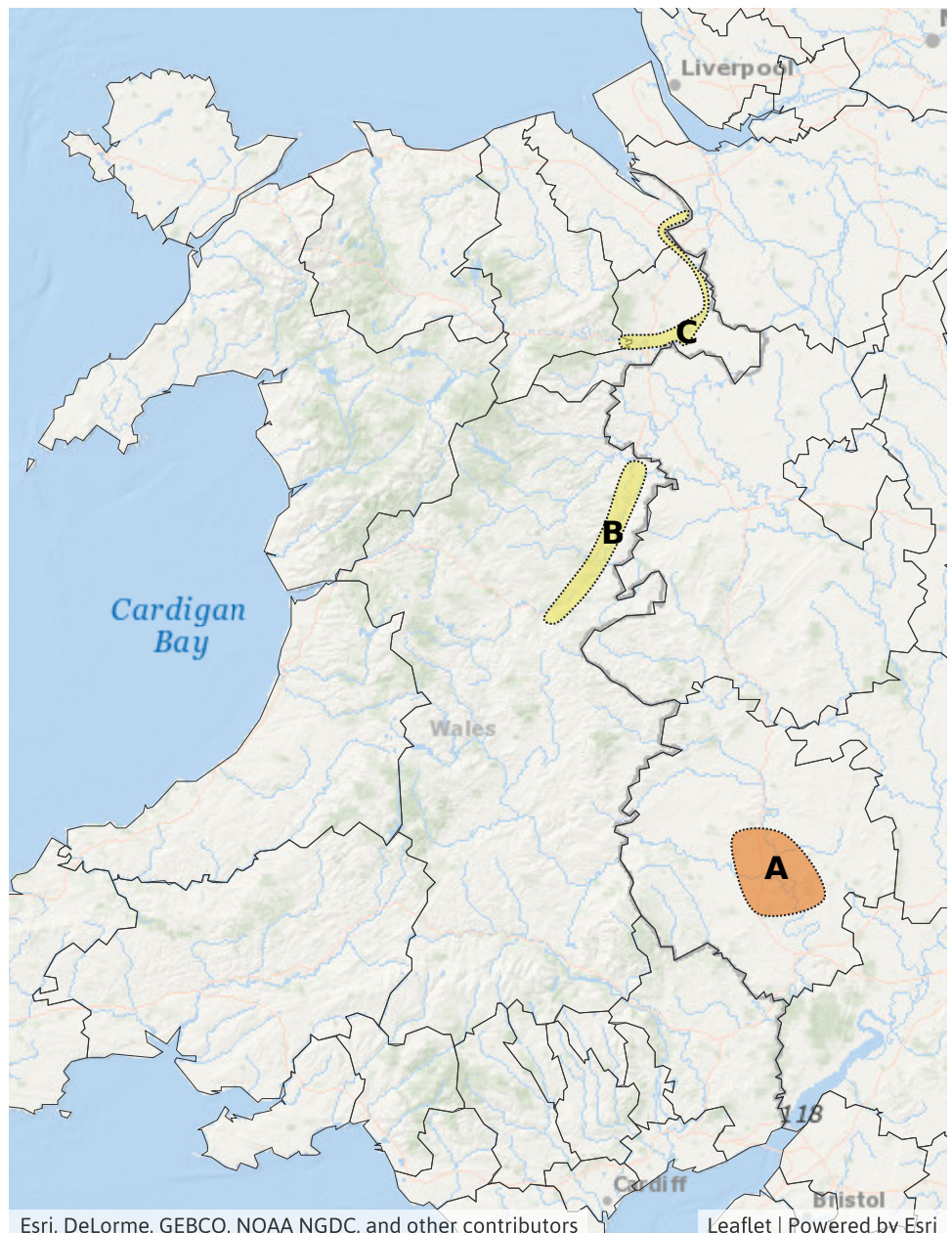
Source River  
Likely duration 1 Day

Reduced to minor impacts from this morning.

**RISK AREA C**  
Impact **MINOR**  
Likelihood **HIGH**

Source River  
Likely duration 2 Days

Reduced to minor impacts from this morning.



Esri, DeLorme, GEBCO, NOAA NGDC, and other contributors

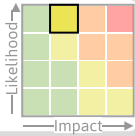
Leaflet | Powered by Esri

# Flood Guidance Statement

15:30hrs Sunday 08 December 2024

## Specific Areas of Concern Map 2 - Sunday 8 December 2024 (Minor river flooding impacts)

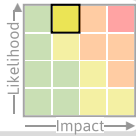
**RISK AREA B**  
Impact **MINOR**  
Likelihood **HIGH**



Source River  
Likely duration 1 Day

Reduced to minor impacts from this morning.

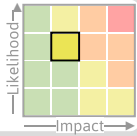
**RISK AREA C**  
Impact **MINOR**  
Likelihood **HIGH**



Source River  
Likely duration 2 Days

Ongoing river impacts on the River Dee in Wales.


**RISK AREA D**  
Impact **MINOR**  
Likelihood **MEDIUM**



Source River  
Likely duration 1 Day

Ongoing river flooding impacts following heavy rain falling on wet ground.


**RISK AREA E**  
Impact **MINOR**  
Likelihood **HIGH**



Source River  
Likely duration 4 Days

Ongoing river flooding impacts on the Rivers Severn and Dee.


**RISK AREA F**  
Impact **MINOR**  
Likelihood **MEDIUM**



Source River  
Likely duration 2 Days

Ongoing river impacts on the River Wye Sunday and Monday.


**RISK AREA G**  
Impact **MINOR**  
Likelihood **MEDIUM**



Source River  
Likely duration 1 Day

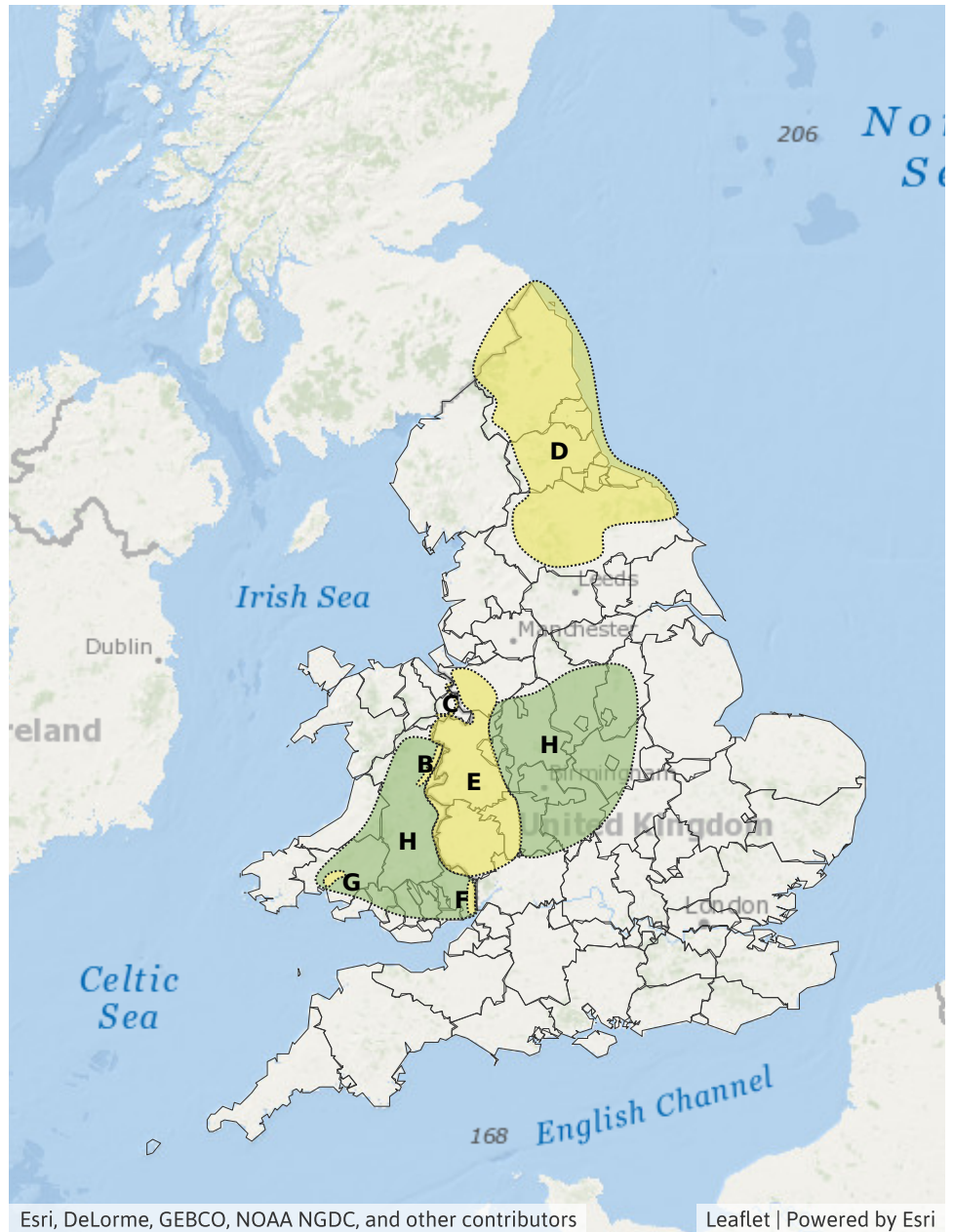
Ongoing river flooding impacts on Sunday only on the River Towy.

**RISK AREA H**  
Impact **MINOR**  
Likelihood **LOW**



Source River  
Likely duration 2 Days

Ongoing river flooding possible.





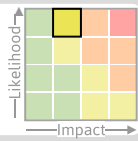
# Flood Guidance Statement

15:30hrs Sunday 08 December 2024

## Specific Areas of Concern Map 3 - Monday 9 December 2024

### RISK AREA C

Impact **MINOR**  
Likelihood **HIGH**



Source River  
Likely duration 2 Days

Ongoing river impacts on the River Dee in Wales.

### RISK AREA E

Impact **MINOR**  
Likelihood **HIGH**



Source River  
Likely duration 4 Days

Ongoing river flooding impacts on the River Severn.

### RISK AREA F

Impact **MINOR**  
Likelihood **MEDIUM**



Source River  
Likely duration 2 Days

Ongoing river impacts on the River Wye  
Sunday and Monday.

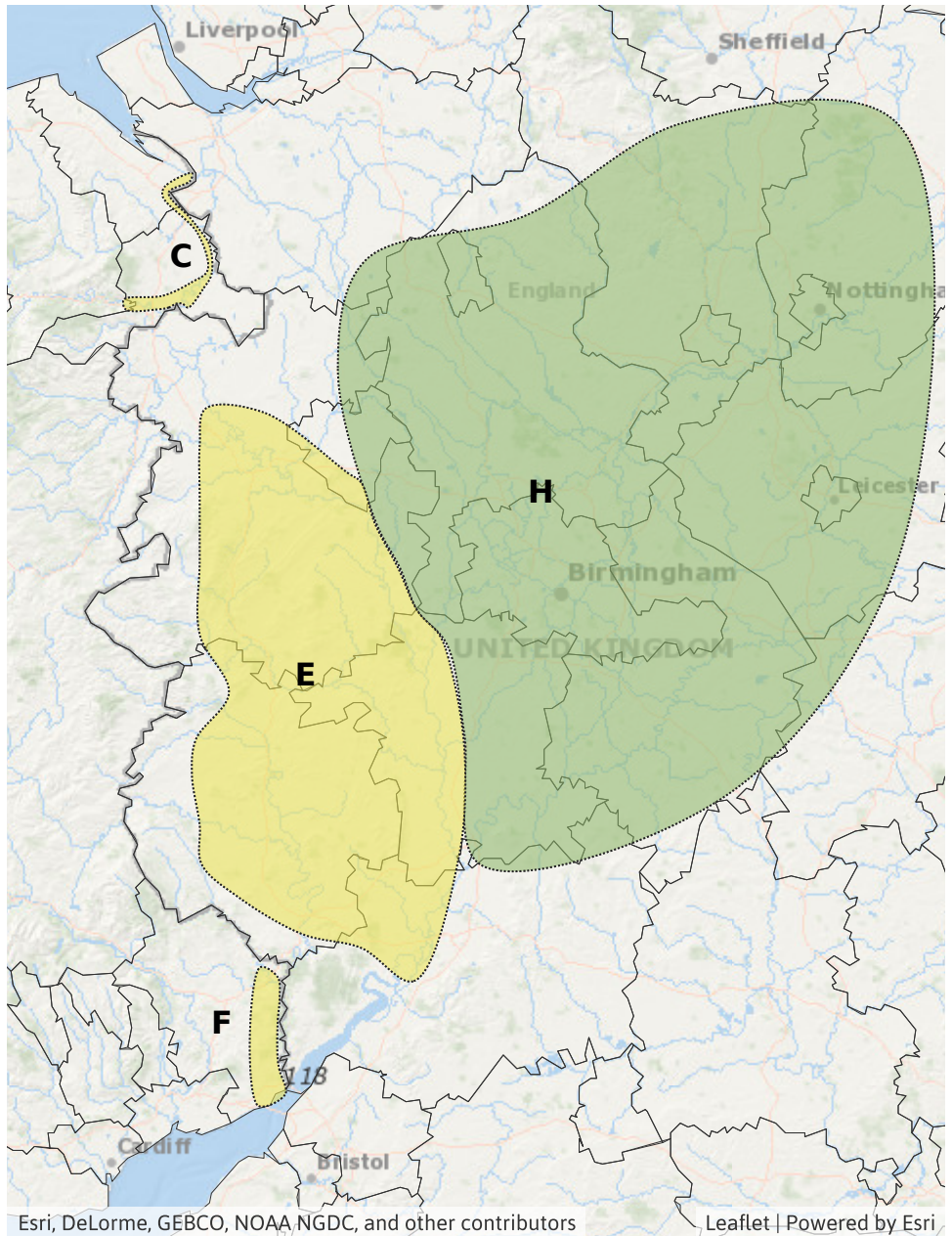
### RISK AREA H

Impact **MINOR**  
Likelihood **LOW**



Source River  
Likely duration 2 Days

Ongoing river flooding possible.



Esri, DeLorme, GEBCO, NOAA NGDC, and other contributors

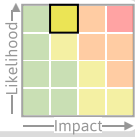
Leaflet | Powered by Esri

# Flood Guidance Statement

15:30hrs Sunday 08 December 2024

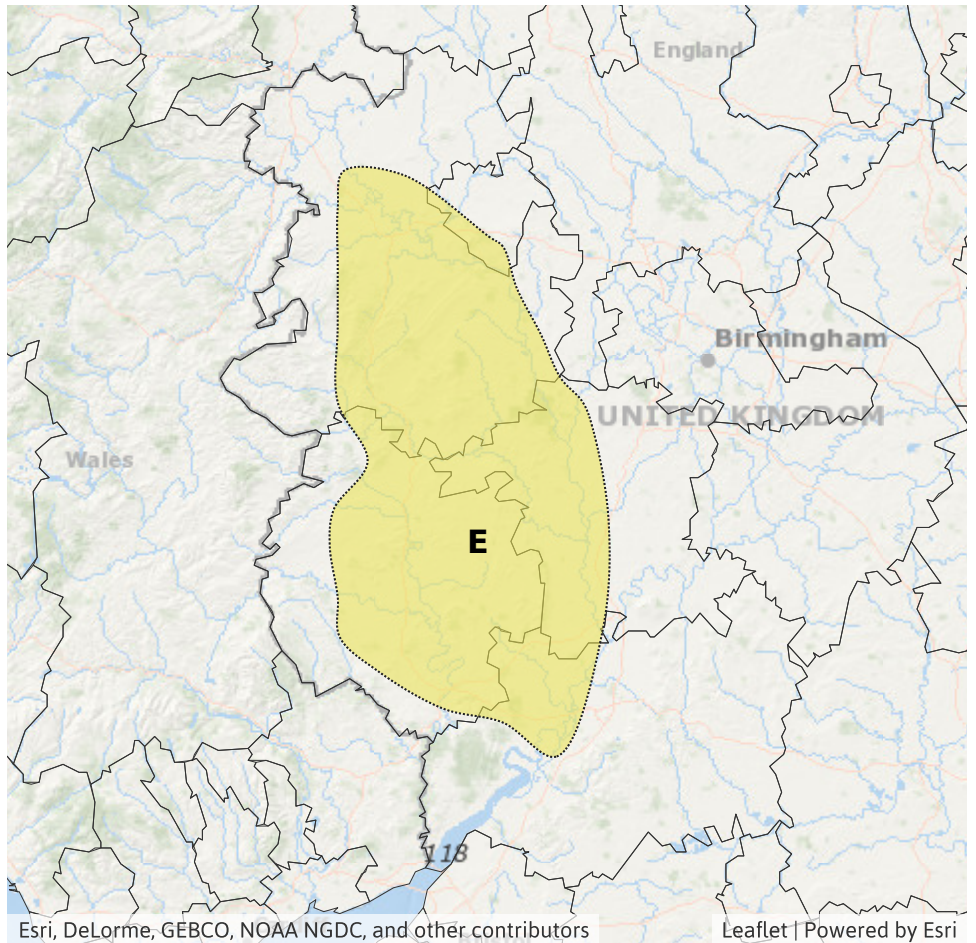
## Specific Areas of Concern Map 4 - Tuesday 10 and Wednesday 11 December 2024

**RISK AREA E**  
Impact **MINOR**  
Likelihood **HIGH**



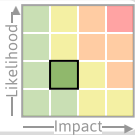
Source River  
Likely duration 4 Days

Ongoing river flooding. Impacts only in Worcestershire and Gloucestershire by Wed.



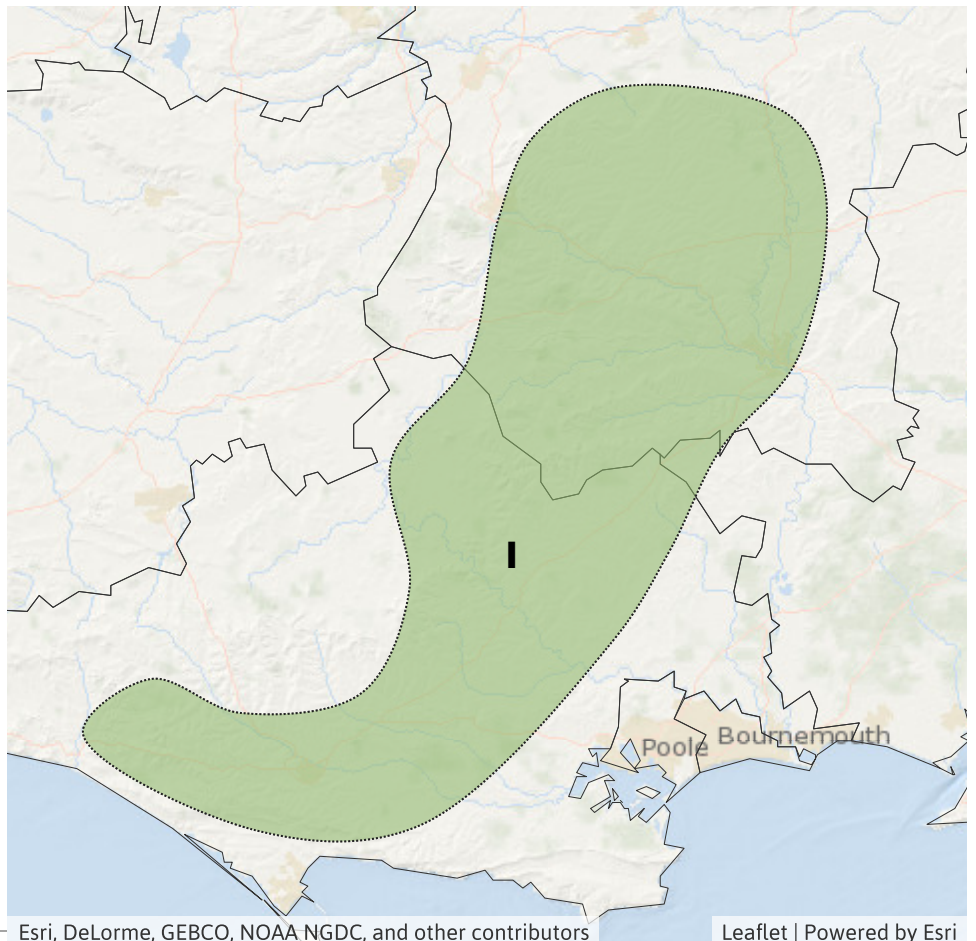
## Specific Areas of Concern Map 5 - Sunday 8 to Thursday 12 December 2024

**RISK AREA I**  
Impact **MINOR**  
Likelihood **LOW**



Source Ground  
Likely duration 5 + Days

Localised groundwater flooding impacts are possible.





## Assessment of flood risk



### Rivers

The river flood risk is MEDIUM today (Sunday), then LOW until Wednesday.

Ongoing significant river flooding impacts are probable in Hereford today following Storm Darragh. Minor impacts are now expected on the River Severn (Sunday) and Dee (Sunday and Monday) in Wales compared to this morning's FGS.

Minor river flooding impacts are also continuing in the Midlands today and tomorrow and the North East of England and Wales today.

See Specific Areas of Concern Maps.



### Groundwater

The groundwater flood risk is VERY LOW for the next five days.

Minor groundwater flooding impacts are possible in parts of Dorset, Wiltshire and Hampshire for the next five days due to rising groundwater levels from recent heavy rainfall. See Specific Areas of Concern Map.



### Coastal/Tidal

The coastal/tidal flood risk is VERY LOW for the next five days.

Minor coastal flooding impacts are possible but not expected for parts of the East coast of England today (Sunday) due to very strong winds, and spray/wave overtopping from Storm Darragh.



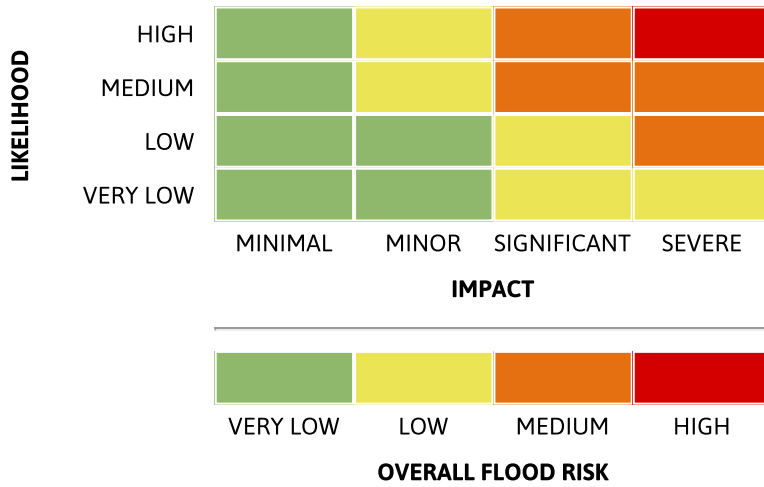
### Surface water

The surface water flood risk is VERY LOW for the next five days.

# Flood Guidance Statement

15:30hrs Sunday 08 December 2024

## Flood risk matrix



## Summary of potential impacts

### MINIMAL

Isolated and minor flooding of low-lying land and roads  
Isolated spray/wave on coastal promenades  
Little or no disruption to travel, but wet road surfaces

### MINOR

Localised flooding of land and roads  
Flooding affecting individual properties  
Disruption to travel and key sites in flood plans

### SIGNIFICANT

Flooding affecting parts of communities  
Possible danger to life and damage to buildings/structures  
Disruption to travel and key sites in flood plans

### SEVERE

Danger to life, severe disruption to travel  
Widespread flooding affecting whole communities  
Widespread disruption or loss of infrastructure  
Large scale evacuation of properties possible

Next statement due **10:30hrs Monday 09 December 2024 (all times are local)**

Contact details **Flood Forecasting Centre Duty Hydrometeorologist - 0330 135 4400**

More information <https://www.gov.uk/government/organisations/flood-forecasting-centre>