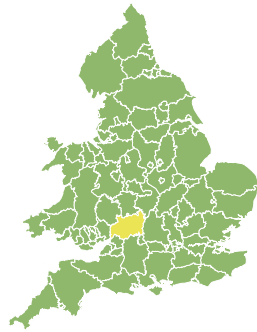
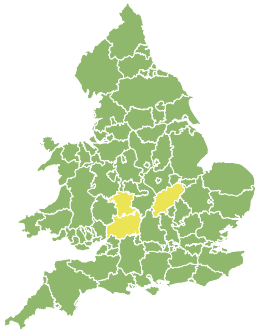


Flood Guidance Statement

10:30hrs Friday 29 November 2024



Friday

29 Nov 2024 10:30-23:59
Trend since last FGS

Steady



Saturday

30 Nov 2024

Steady



Sunday

1 Dec 2024

Steady



Monday

2 Dec 2024

Steady



Tuesday

3 Dec 2024

Steady



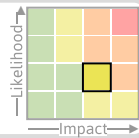
Significant river flooding impacts are possible in Northamptonshire on Friday. Minor river flooding is probable on the Severn until Saturday. Groundwater flooding is possible from Friday in parts of the South of England. The overall flood risk is LOW.

Specific Areas of Concern Map 1 - Friday 29 and Saturday 30 November 2024

RISK AREA A

Impact **SIGNIFICANT**

Likelihood **LOW**



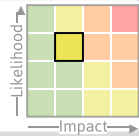
Source River
Likely duration 1 Day

Ongoing river flooding, with significant impacts possible today.

RISK AREA B

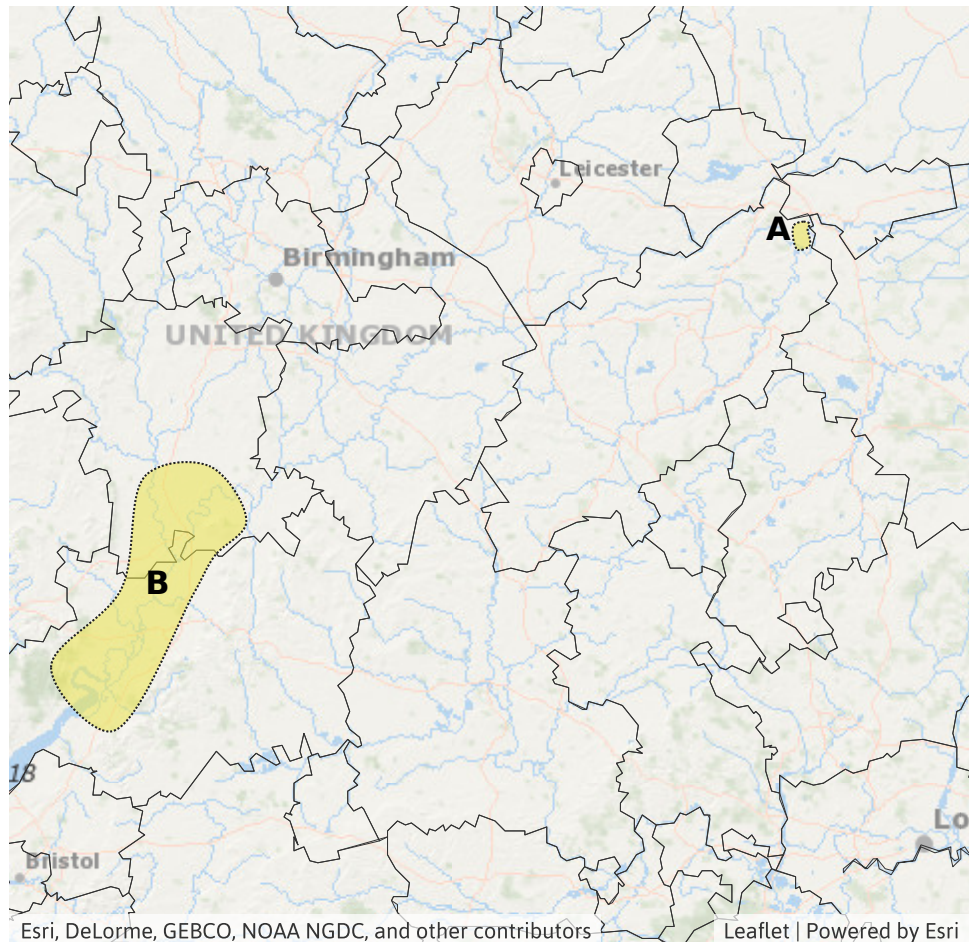
Impact **MINOR**

Likelihood **MEDIUM**



Source River
Likely duration 2 Days

High river levels ongoing on the lower River Severn until Saturday.

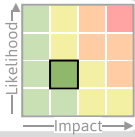


Flood Guidance Statement

10:30hrs Friday 29 November 2024

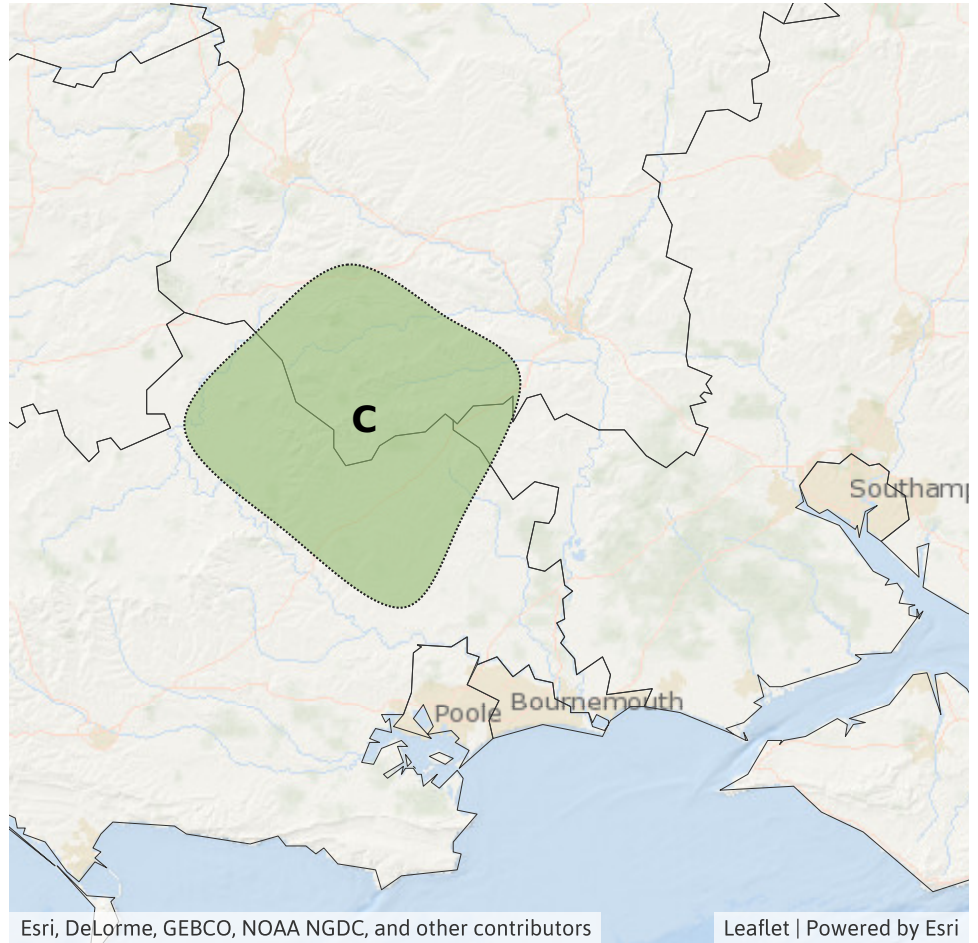
Specific Areas of Concern Map 2 - Friday 29 November to Tuesday 03 December 2024

RISK AREA C
Impact **MINOR**
Likelihood **LOW**



Source Ground
Likely duration 5 + Days

Localised groundwater flooding impacts



Assessment of flood risk



Rivers

The river flood risk is LOW until Saturday.

Localised significant river flooding impacts are possible in Northamptonshire on Friday and minor river flooding impacts are probable on parts of the lower Severn until Saturday. This is due to rivers continuing to respond after recent wet weather. See specific areas of concern maps.



Groundwater

The groundwater flood risk is VERY LOW for the next five days.

Minor groundwater flooding impacts are possible in parts of Dorset, Wiltshire and Hampshire from Friday onwards due to rising groundwater levels from recent heavy rainfall. See specific areas of concern maps.



Surface water

The surface water flood risk is VERY LOW for the next five days.



Coastal/Tidal

The coastal/tidal flood risk is VERY LOW for the next five days.

Flood Guidance Statement

10:30hrs Friday 29 November 2024

Flood risk matrix



Summary of potential impacts

MINIMAL

Isolated and minor flooding of low-lying land and roads
Isolated spray/wave on coastal promenades
Little or no disruption to travel, but wet road surfaces

MINOR

Localised flooding of land and roads
Flooding affecting individual properties
Disruption to travel and key sites in flood plans

SIGNIFICANT

Flooding affecting parts of communities
Possible danger to life and damage to buildings/structures
Disruption to travel and key sites in flood plans

SEVERE

Danger to life, severe disruption to travel
Widespread flooding affecting whole communities
Widespread disruption or loss of infrastructure
Large scale evacuation of properties possible

Next statement due **10:30hrs Saturday 30 November 2024 (all times are local)**

Contact details **Flood Forecasting Centre Duty Hydrometeorologist - 0330 135 4400**

More information <https://www.gov.uk/government/organisations/flood-forecasting-centre>