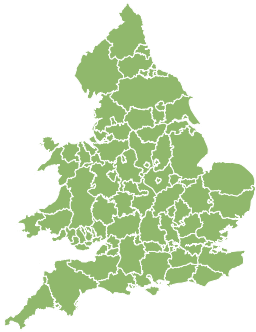


Flood Guidance Statement

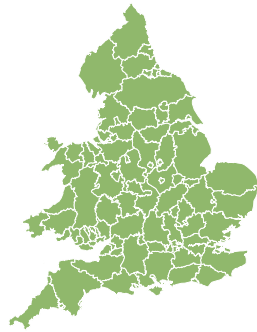
10:30hrs Friday 25 October 2024



Friday

25 Oct 2024 10:30-23:59
Trend since last FGS

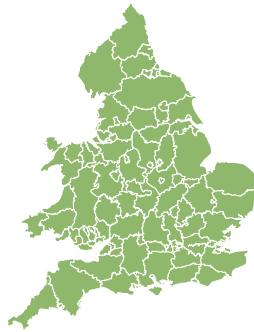
Steady →



Saturday

26 Oct 2024

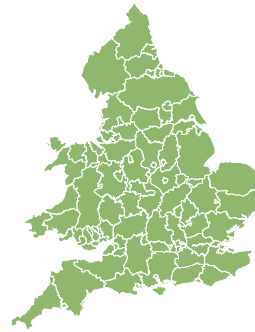
Steady →



Sunday

27 Oct 2024

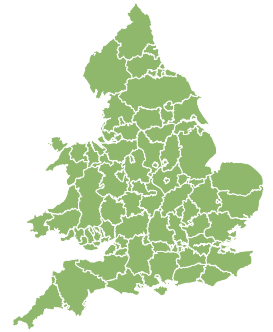
Increased ↑



Monday

28 Oct 2024

Increased ↑



Tuesday

29 Oct 2024

Steady →

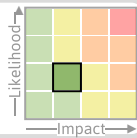
Minor inland flooding is possible over North West England and possible but not expected over North Wales on Sunday and Monday. The overall flood risk for England and Wales for the next five days is VERY LOW.

Specific Areas of Concern Map 1 - Sunday 27 and Monday 28 October 2024

RISK AREA A

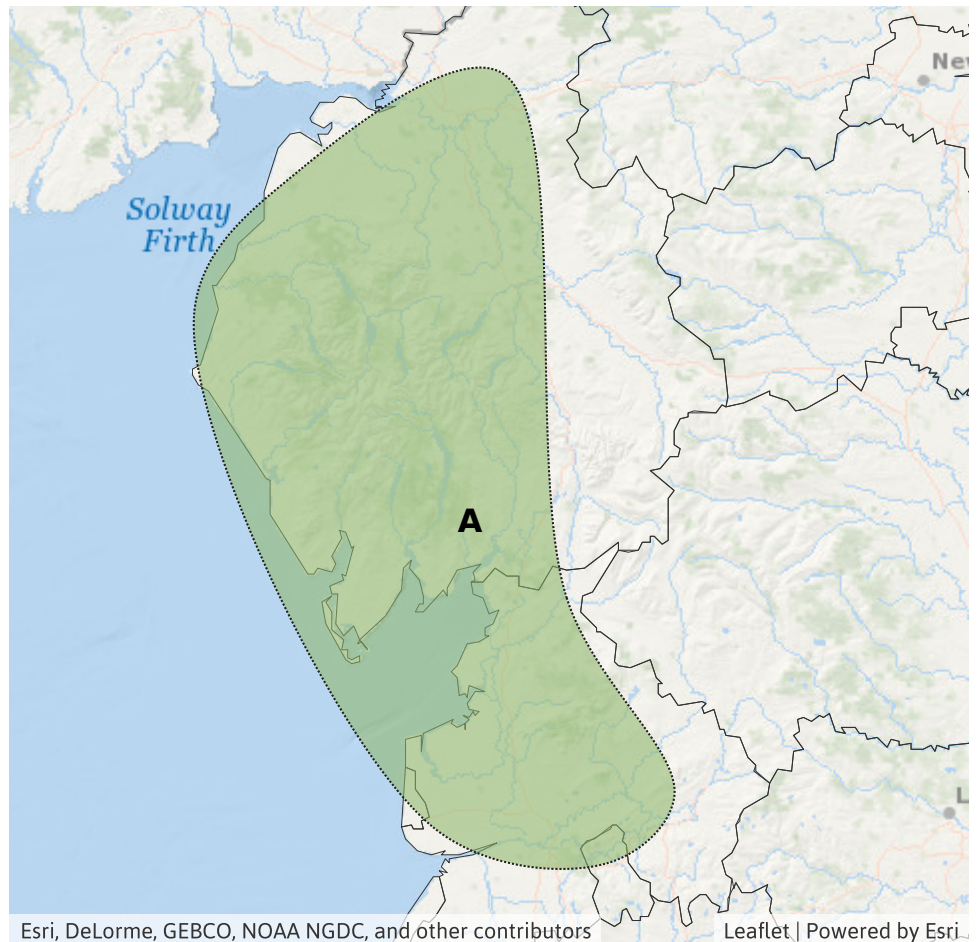
Impact **MINOR**

Likelihood **LOW**



Source River Surface
Likely duration 2 Days

Potential for prolonged and heavy rain over hills and mountains.



Esri, DeLorme, GEBCO, NOAA NGDC, and other contributors

Leaflet | Powered by Esri

Assessment of flood risk



Surface water

The surface water flood risk is VERY LOW for the next five days.

Minor surface water flooding is possible over North West England and possible but not expected over North Wales on Sunday and Monday due to prolonged and heavy rain. See Area of Concern Map.

Impacts could include localised flooding from urban and fast responding smaller watercourses/catchments, drains, channels and flooding from overland flow.



Rivers

The river flood risk is VERY LOW for the next five days.

Minor river flooding is possible over North West England on Sunday and Monday due to prolonged and heavy rain. See Area of Concern Map.



Groundwater

The groundwater flood risk is VERY LOW for the next five days.



Coastal/Tidal

The coastal/tidal flood risk is VERY LOW for the next five days.

Flood Guidance Statement

10:30hrs Friday 25 October 2024

Flood risk matrix



Summary of potential impacts

MINIMAL

Isolated and minor flooding of low-lying land and roads
Isolated spray/wave on coastal promenades
Little or no disruption to travel, but wet road surfaces

MINOR

Localised flooding of land and roads
Flooding affecting individual properties
Disruption to travel and key sites in flood plans

SIGNIFICANT

Flooding affecting parts of communities
Possible danger to life and damage to buildings/structures
Disruption to travel and key sites in flood plans

SEVERE

Danger to life, severe disruption to travel
Widespread flooding affecting whole communities
Widespread disruption or loss of infrastructure
Large scale evacuation of properties possible

Next statement due **10:30hrs Saturday 26 October 2024 (all times are local)**

Contact details **Flood Forecasting Centre Duty Hydrometeorologist - 0330 135 4400**

More information <https://www.gov.uk/government/organisations/flood-forecasting-centre>