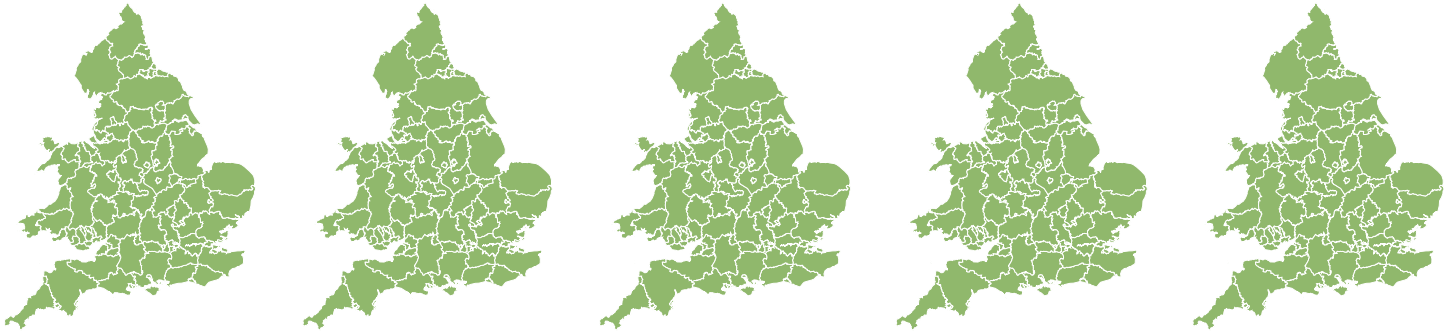


Flood Guidance Statement

10:30hrs Monday 21 October 2024



Monday

21 Oct 2024 10:30-23:59
Trend since last FGS

Steady



Tuesday

22 Oct 2024

Steady



Wednesday

23 Oct 2024

Steady



Thursday

24 Oct 2024

Steady



Friday

25 Oct 2024

Steady

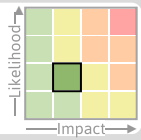


Minor river flooding is possible along the River Severn until Friday. Minor coastal/tidal flooding impacts are possible along the Essex coast until Tuesday. The overall flood risk is VERY LOW.

Specific Areas of Concern Map 1 - Monday 21 and Tuesday 22 October 2024

RISK AREA A

Impact **MINOR**
Likelihood **LOW**



Source River
Likely duration 5 + Days

River flooding along the River Severn is possible.

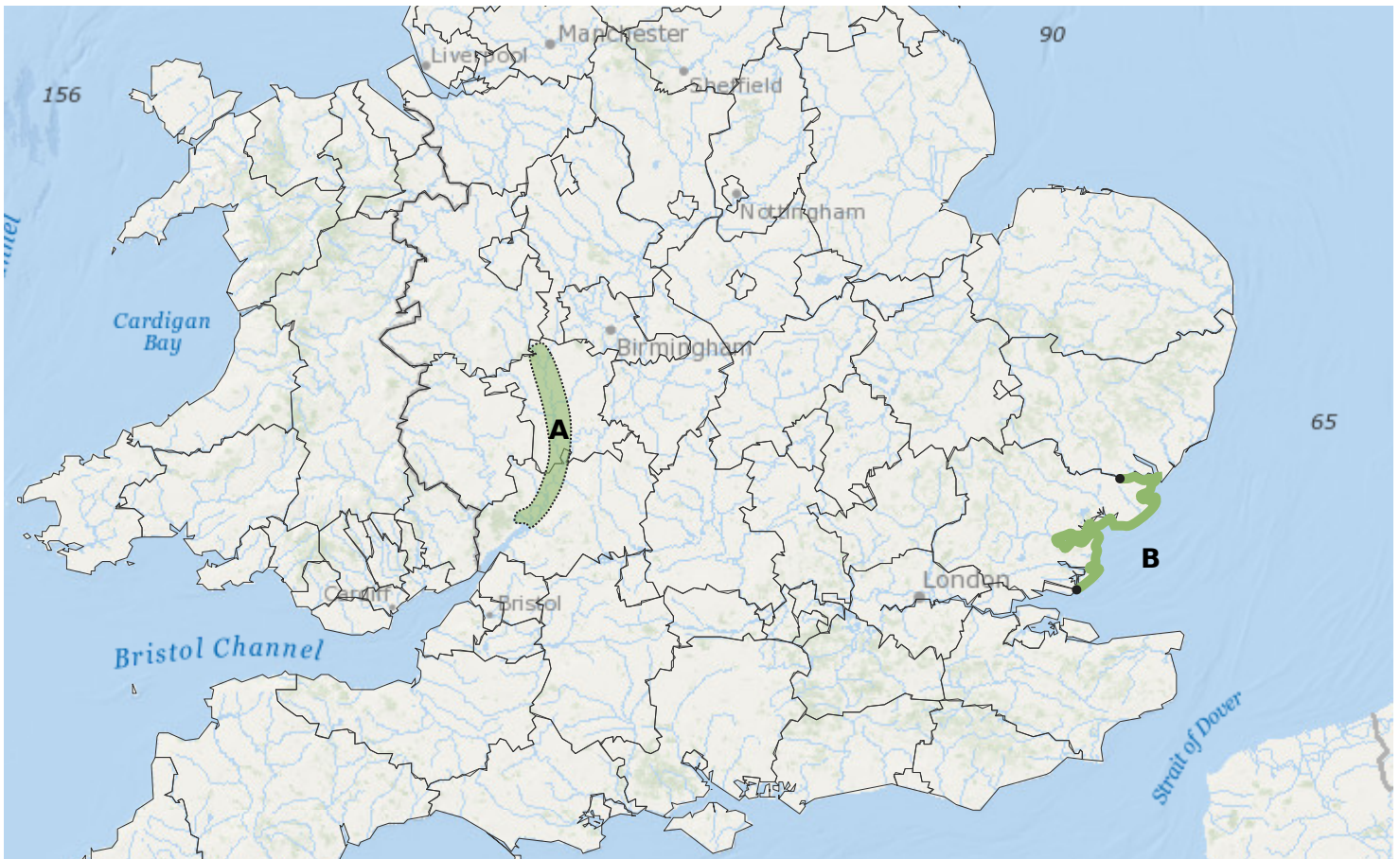
RISK AREA B

Impact **MINOR**
Likelihood **LOW**



Source Coastal/Tidal
Likely duration 2 Days

Coastal/tidal flooding probable around times of high water.



Flood Guidance Statement

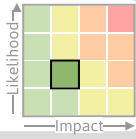
10:30hrs Monday 21 October 2024

Specific Areas of Concern Map 2 - Wednesday 23 until Friday 25 October 2024

RISK AREA **A**

Impact **MINOR**

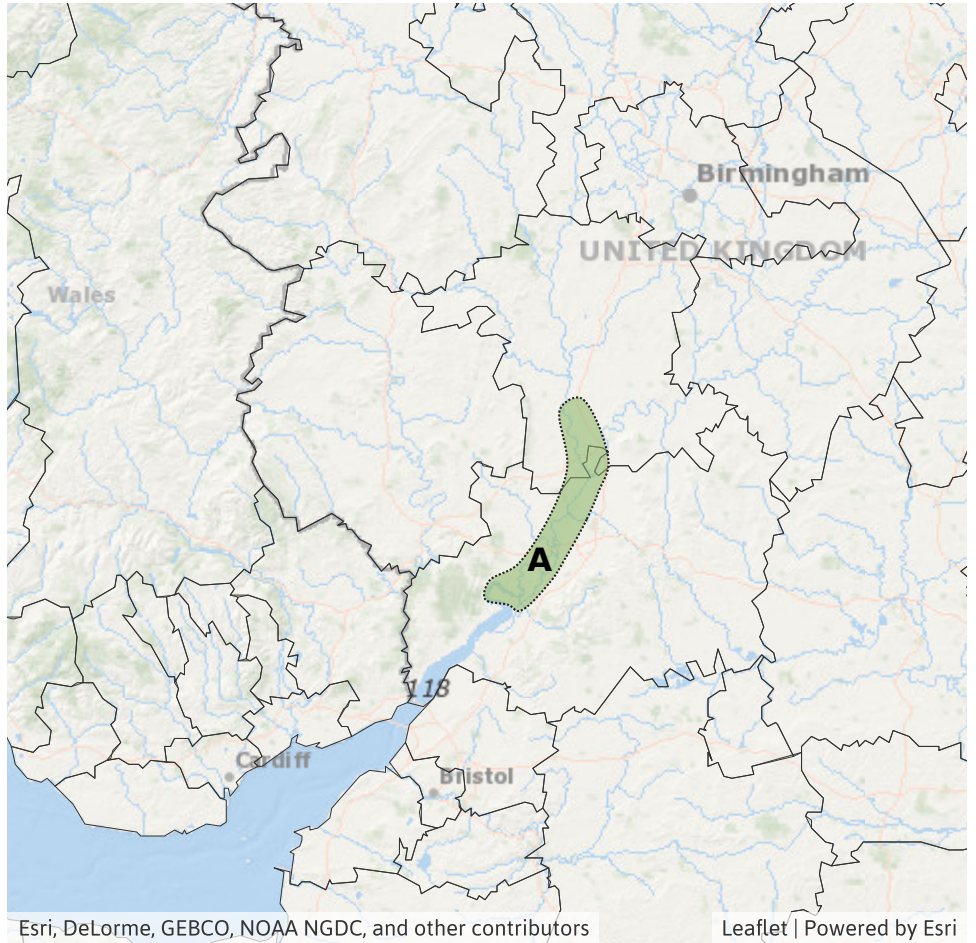
Likelihood **LOW**



Source River

Likely duration 5 + Days

River flooding along the River Severn is possible.



Assessment of flood risk



Rivers

The river flood risk is VERY LOW for the next five days.

Ongoing river flooding is possible along the River Severn until at least Friday. See Specific Areas of Concern Maps.



Coastal/Tidal

The coastal/tidal flood risk is VERY LOW for the next five days.

Due to high tides, minor coastal flooding impacts are possible along the Essex coast today (Monday) and Tuesday. See Specific Areas of Concern Maps.



Surface water

The surface water flood risk is VERY LOW for the next five days.



Groundwater

The groundwater flood risk is VERY LOW for the next five days.

Flood Guidance Statement

10:30hrs Monday 21 October 2024

Flood risk matrix



Summary of potential impacts

MINIMAL

Isolated and minor flooding of low-lying land and roads
Isolated spray/wave on coastal promenades
Little or no disruption to travel, but wet road surfaces

MINOR

Localised flooding of land and roads
Flooding affecting individual properties
Disruption to travel and key sites in flood plans

SIGNIFICANT

Flooding affecting parts of communities
Possible danger to life and damage to buildings/structures
Disruption to travel and key sites in flood plans

SEVERE

Danger to life, severe disruption to travel
Widespread flooding affecting whole communities
Widespread disruption or loss of infrastructure
Large scale evacuation of properties possible

Next statement due **10:30hrs Tuesday 22 October 2024 (all times are local)**

Contact details **Flood Forecasting Centre Duty Hydrometeorologist - 0330 135 4400**

More information <https://www.gov.uk/government/organisations/flood-forecasting-centre>