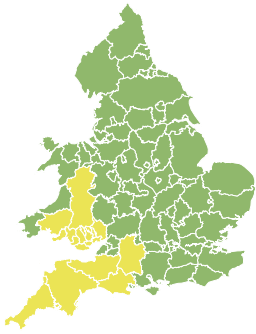


Flood Guidance Statement

10:30hrs Monday 13 May 2024



Monday

13 May 2024 10:30-23:59
Trend since last FGS

Steady



Tuesday

14 May 2024

Steady



Wednesday

15 May 2024

Steady



Thursday

16 May 2024

Steady



Friday

17 May 2024

Steady



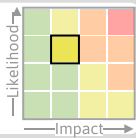
Minor surface water flooding impacts are probable today (Monday) across parts of South Wales and South West England. The overall flood risk is LOW.

Specific Areas of Concern Map 1 - Monday 13 May 2024

RISK AREA A

Impact **MINOR**

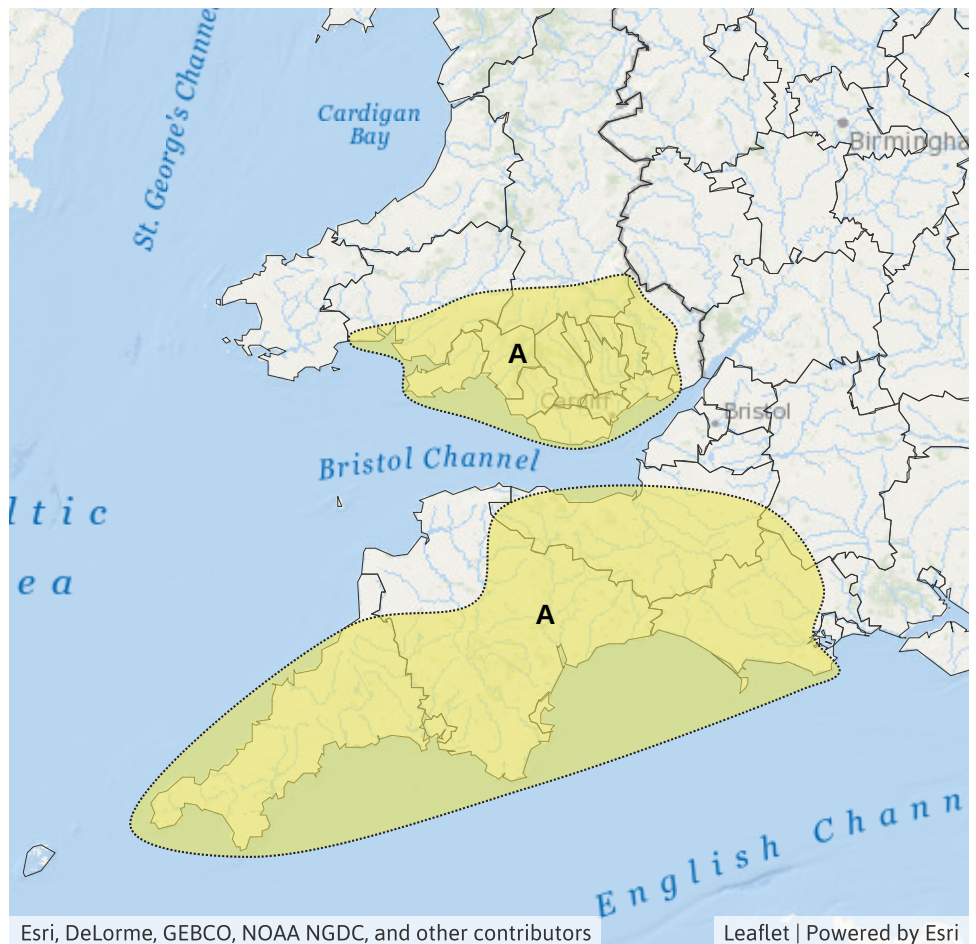
Likelihood **MEDIUM**



Source Surface

Likely duration 1 Day

Minor surface water flooding is probable through today (Monday).



Esri, DeLorme, GEBCO, NOAA NGDC, and other contributors

Leaflet | Powered by Esri

Assessment of flood risk



Surface water

The surface water flood risk is LOW today (Monday).

Minor surface water flooding impacts are probable today across parts of South Wales and South West England. See Specific Areas of Concern Map.

Impacts could include localised flooding from urban and fast responding smaller watercourses/catchments, drains, channels and flooding from overland flow.



Groundwater

The groundwater flood risk is VERY LOW for the next five days.

The level of the ongoing disruption caused by groundwater flooding in the South of England is not forecast to get worse, the flooding is being managed and awareness is high. Consequently the groundwater flood risk is VERY LOW.



Rivers

The river flood risk is VERY LOW for the next five days.



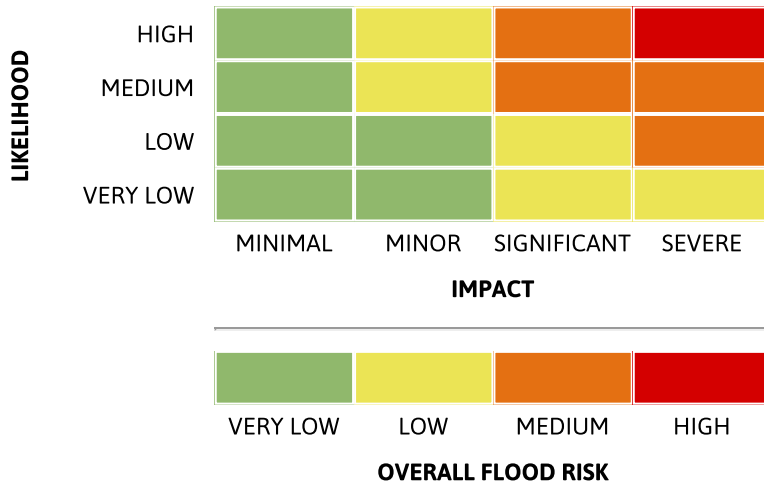
Coastal/Tidal

The coastal/tidal flood risk is VERY LOW for the next five days.

Flood Guidance Statement

10:30hrs Monday 13 May 2024

Flood risk matrix



Summary of potential impacts

MINIMAL

Isolated and minor flooding of low-lying land and roads
Isolated spray/wave on coastal promenades
Little or no disruption to travel, but wet road surfaces

MINOR

Localised flooding of land and roads
Flooding affecting individual properties
Disruption to travel and key sites in flood plans

SIGNIFICANT

Flooding affecting parts of communities
Possible danger to life and damage to buildings/structures
Disruption to travel and key sites in flood plans

SEVERE

Danger to life, severe disruption to travel
Widespread flooding affecting whole communities
Widespread disruption or loss of infrastructure
Large scale evacuation of properties possible

Next statement due **10:30hrs Tuesday 14 May 2024 (all times are local)**

Contact details **Flood Forecasting Centre Duty Hydrometeorologist - 0330 135 4400**

More information <https://www.gov.uk/government/organisations/flood-forecasting-centre>