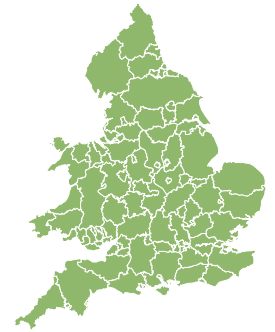
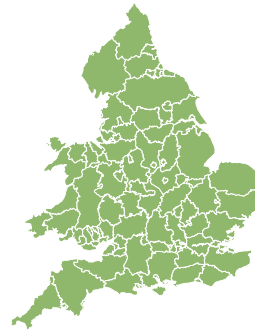
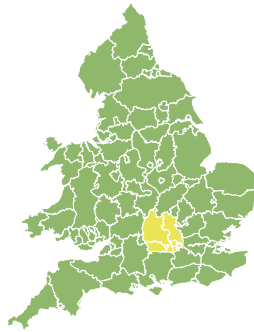
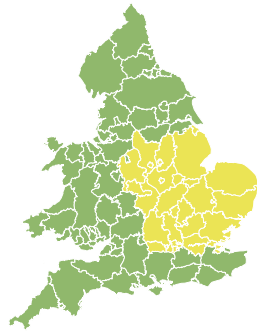
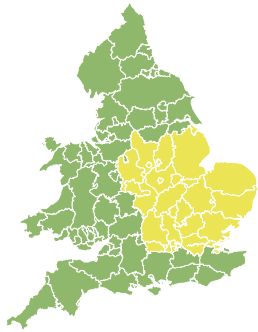


# Flood Guidance Statement

10:30hrs Thursday 22 February 2024



Thursday

22 Feb 2024 10:30-23:59  
Trend since last FGS

Steady



Friday

23 Feb 2024

Steady



Saturday

24 Feb 2024

Steady



Sunday

25 Feb 2024

Steady



Monday

26 Feb 2024

Steady



Significant inland flooding impacts are possible but not expected today (Thursday) and on Friday in parts of England, with minor impacts possible more widely, including across South Wales. The overall flood risk is LOW.

## Specific Areas of Concern Map 1 - Thursday 22 and Friday 23 February 2024

**RISK AREA A**  
Impact **SIGNIFICANT**  
Likelihood **VERY LOW**

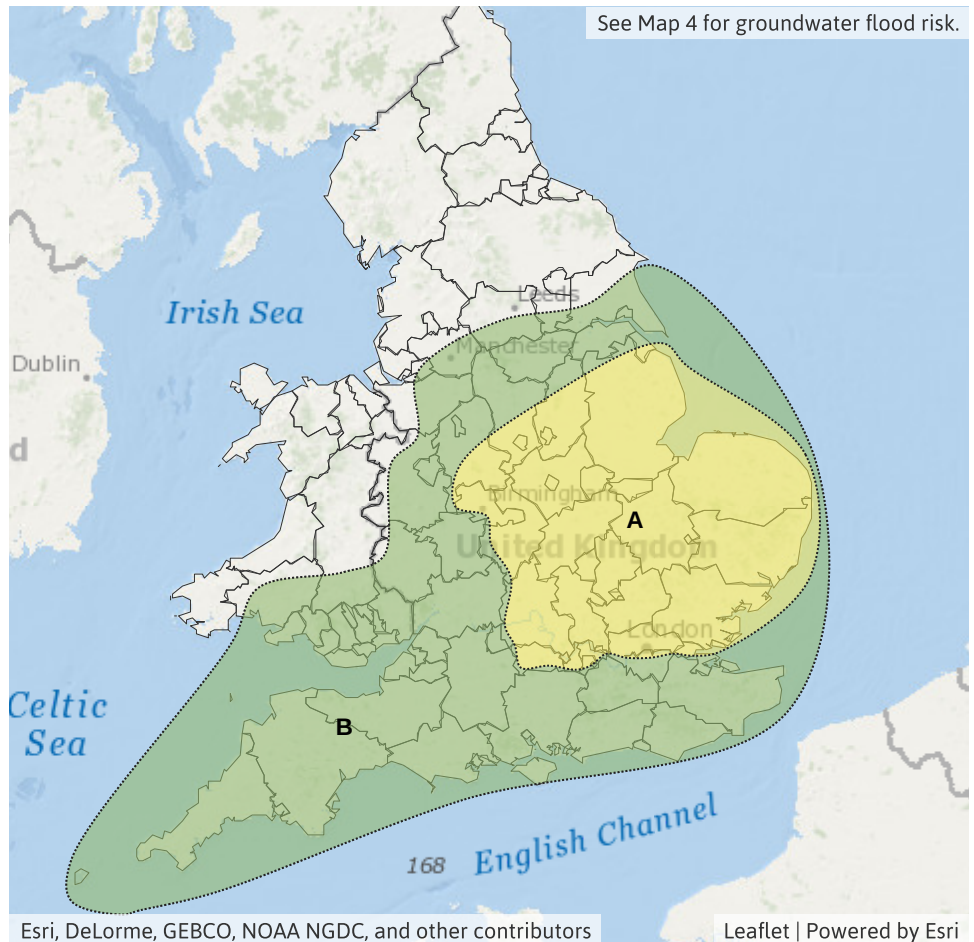
Source River Surface  
Likely duration 2 Days

Rain falling on wet catchments today (Thursday). Rivers still responding on Friday.

**RISK AREA B**  
Impact **MINOR**  
Likelihood **LOW**

Source River Surface  
Likely duration 2 Days

Rain falling on wet catchments today (Thursday). Rivers still responding on Friday.

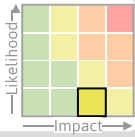


# Flood Guidance Statement

10:30hrs Thursday 22 February 2024

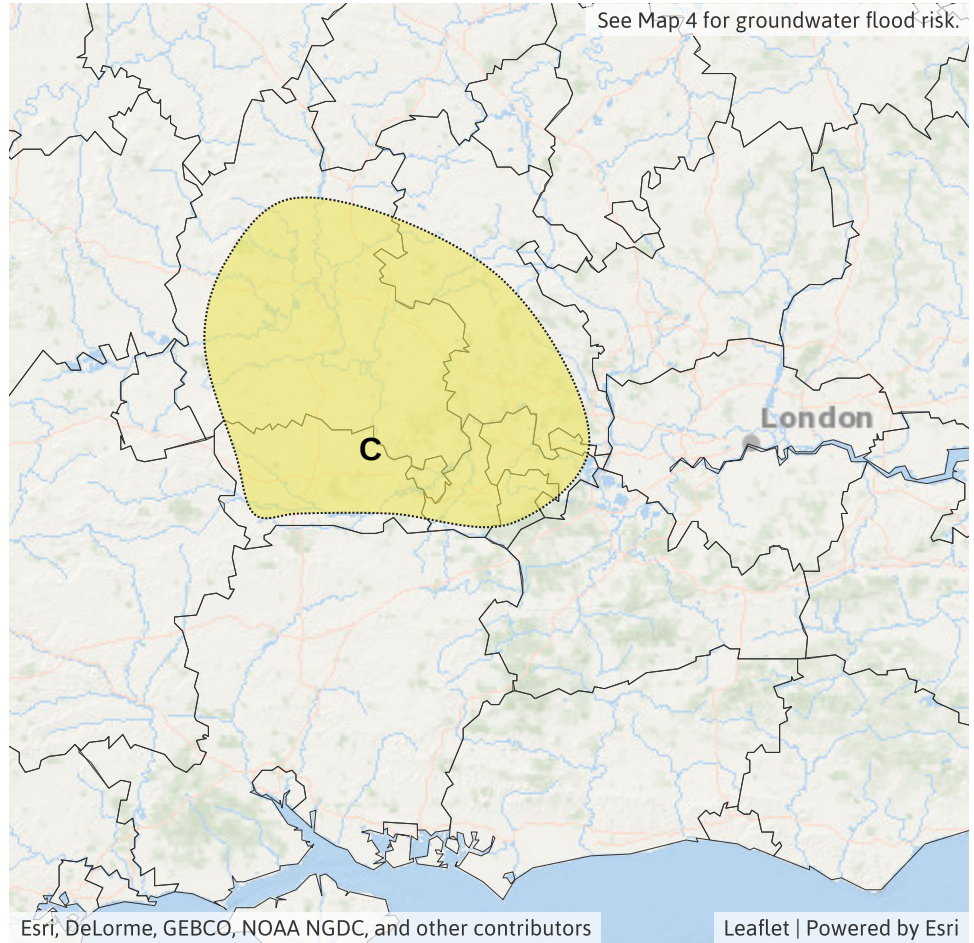
## Specific Areas of Concern Map 2 - Saturday 24 February 2024

**RISK AREA C**  
Impact **SIGNIFICANT**  
Likelihood **VERY LOW**



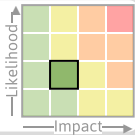
Source River  
Likely duration 1 Day

Ongoing river response along the River Thames and tributaries.



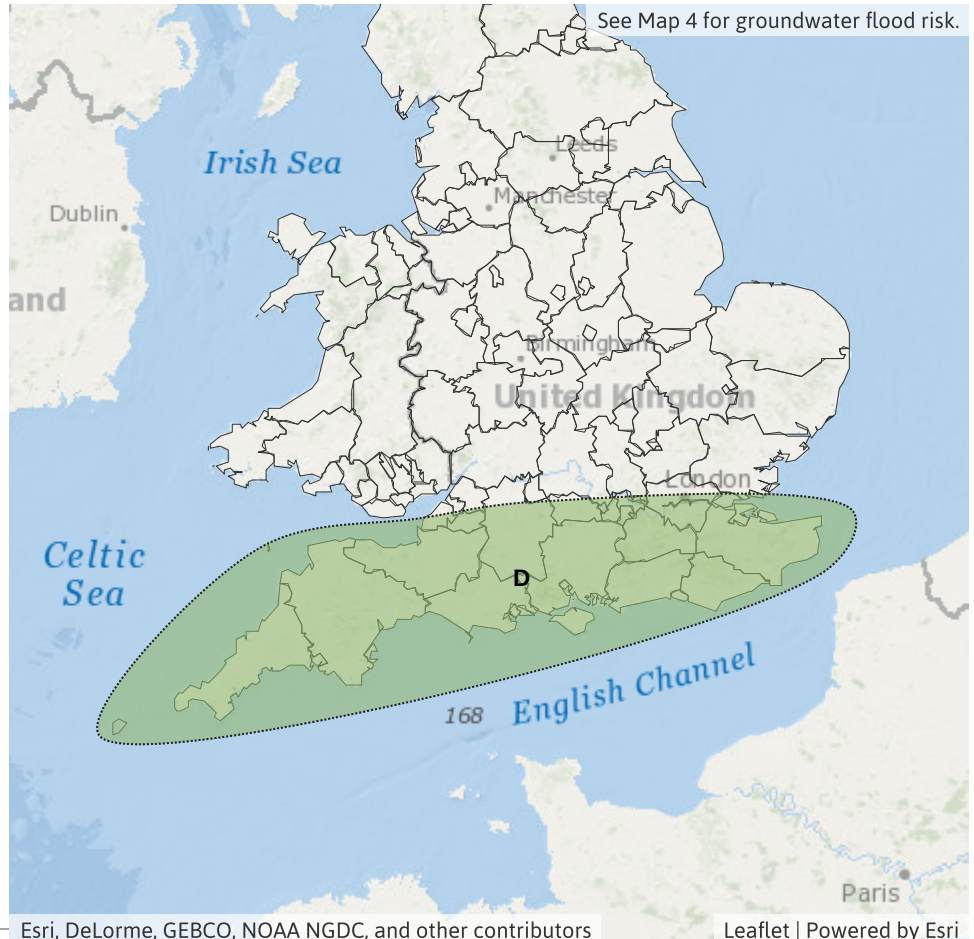
## Specific Areas of Concern Map 3 - Sunday 25 February 2024

**RISK AREA D**  
Impact **MINOR**  
Likelihood **LOW**



Source River Surface  
Likely duration 1 Day

Possible further rain and inland impacts on Sunday.



# Flood Guidance Statement

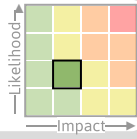
10:30hrs Thursday 22 February 2024

## Specific Areas of Concern Map 4 - Thursday 22 to Monday 26 February 2024

### RISK AREA E

Impact **MINOR**

Likelihood **LOW**



Source Ground

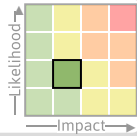
Likely duration 5 + Days

Groundwater impacts in Malton area throughout.

### RISK AREA F

Impact **MINOR**

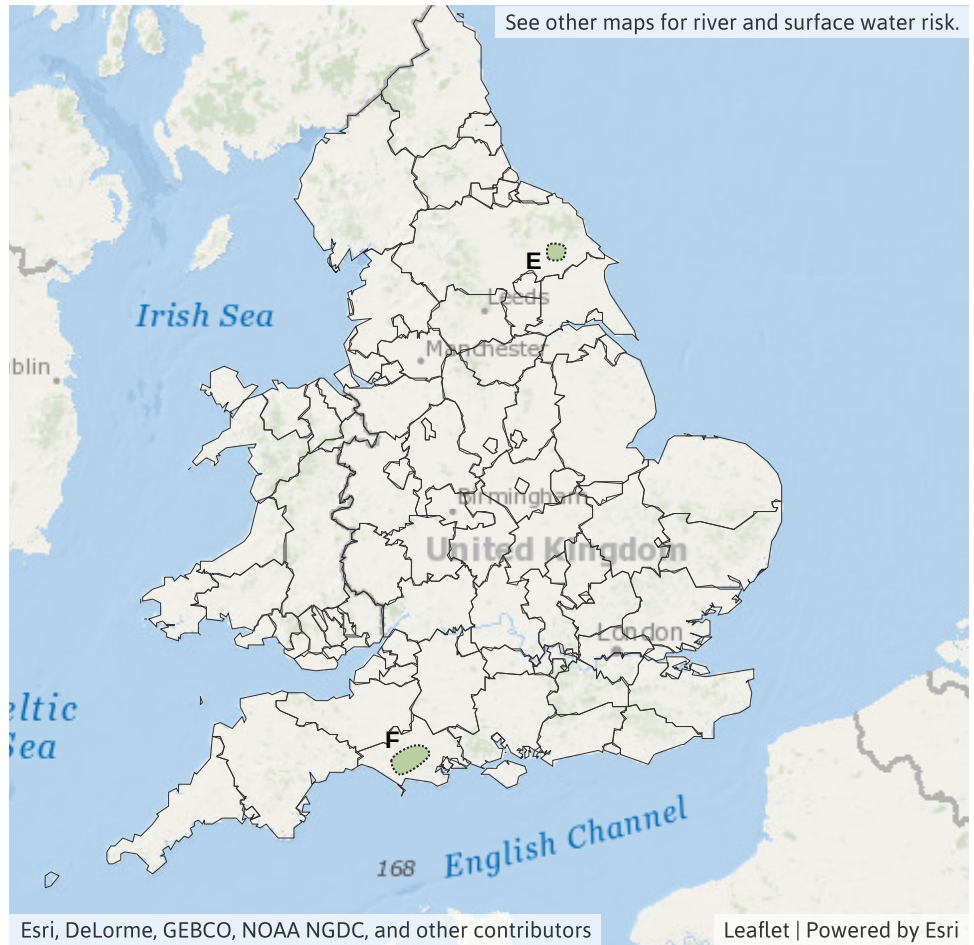
Likelihood **LOW**



Source Ground

Likely duration 4 + Days

Groundwater flooding impacts possible in South Dorset from Friday.



## Assessment of flood risk



### Surface water

The surface water flood risk is LOW today (Thursday).

Significant surface water flooding impacts are possible but not expected for parts of England today due to heavy rain falling on wet ground. Minor surface water flooding impacts are possible more widely today, including across parts of South Wales and the East of England.

Minor surface water flooding impacts are possible in the South of England on Sunday from further rain, and are possible but not expected over much of Wales and the rest of England.

See Specific Areas of Concern Maps.

Impacts could include localised flooding from urban and fast responding smaller watercourses/catchments, drains, channels and flooding from overland flow.



### Rivers

The river flood risk is LOW until Saturday.

Significant river flooding is possible but not expected for parts of England today and on Friday, with this risk persisting along the River Thames until Saturday. Minor river flooding impacts are also possible more widely today and on Friday following heavy rain today falling on wet catchments.

Minor river flooding impacts are again possible in the South of England on Sunday from further rain, and are possible but not expected over much of Wales and the rest of England.

See Specific Areas of Concern Maps.



### Groundwater

The groundwater flood risk is VERY LOW for the next five days.

Minor groundwater impacts are possible in the Malton area of North Yorkshire throughout the next five days and in parts of South Dorset from Friday.

See Specific Areas of Concern Map 4.



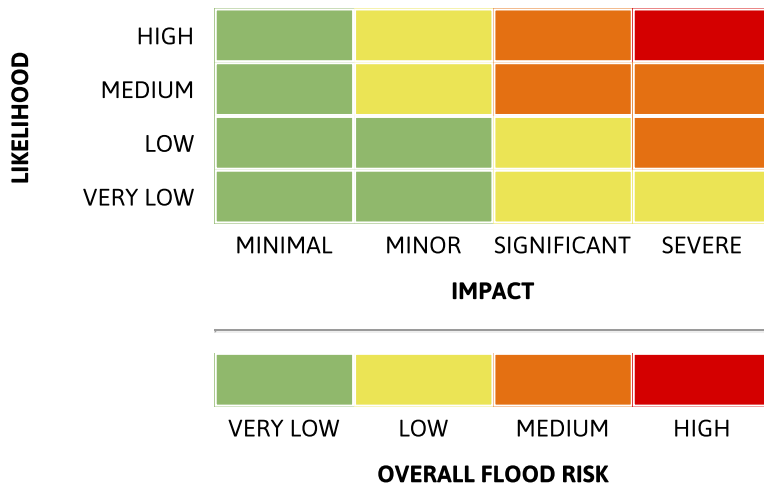
### Coastal/Tidal

The coastal/tidal flood risk is VERY LOW for the next five days.

# Flood Guidance Statement

10:30hrs Thursday 22 February 2024

## Flood risk matrix



## Summary of potential impacts

### MINIMAL

Isolated and minor flooding of low-lying land and roads  
Isolated spray/wave on coastal promenades  
Little or no disruption to travel, but wet road surfaces

### MINOR

Localised flooding of land and roads  
Flooding affecting individual properties  
Disruption to travel and key sites in flood plans

### SIGNIFICANT

Flooding affecting parts of communities  
Possible danger to life and damage to buildings/structures  
Disruption to travel and key sites in flood plans

### SEVERE

Danger to life, severe disruption to travel  
Widespread flooding affecting whole communities  
Widespread disruption or loss of infrastructure  
Large scale evacuation of properties possible

Next statement due **10:30hrs Friday 23 February 2024 (all times are local)**

Contact details **Flood Forecasting Centre Duty Hydrometeorologist - 0330 135 4400**

More information <https://www.gov.uk/government/organisations/flood-forecasting-centre>