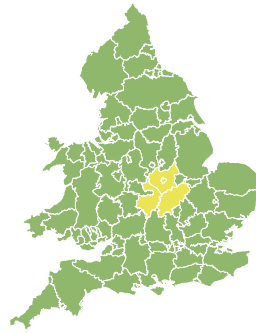
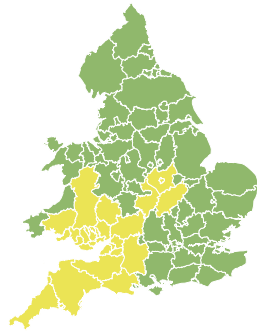
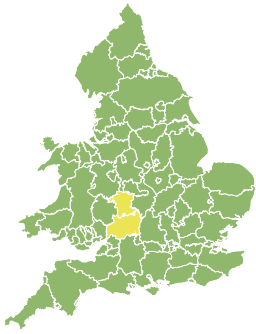


Flood Guidance Statement

10:30hrs Wednesday 14 February 2024



Wednesday

14 Feb 2024 10:30-23:59
Trend since last FGS

Steady



Thursday

15 Feb 2024

Increased



Friday

16 Feb 2024

Increased



Saturday

17 Feb 2024

Steady



Sunday

18 Feb 2024

Steady



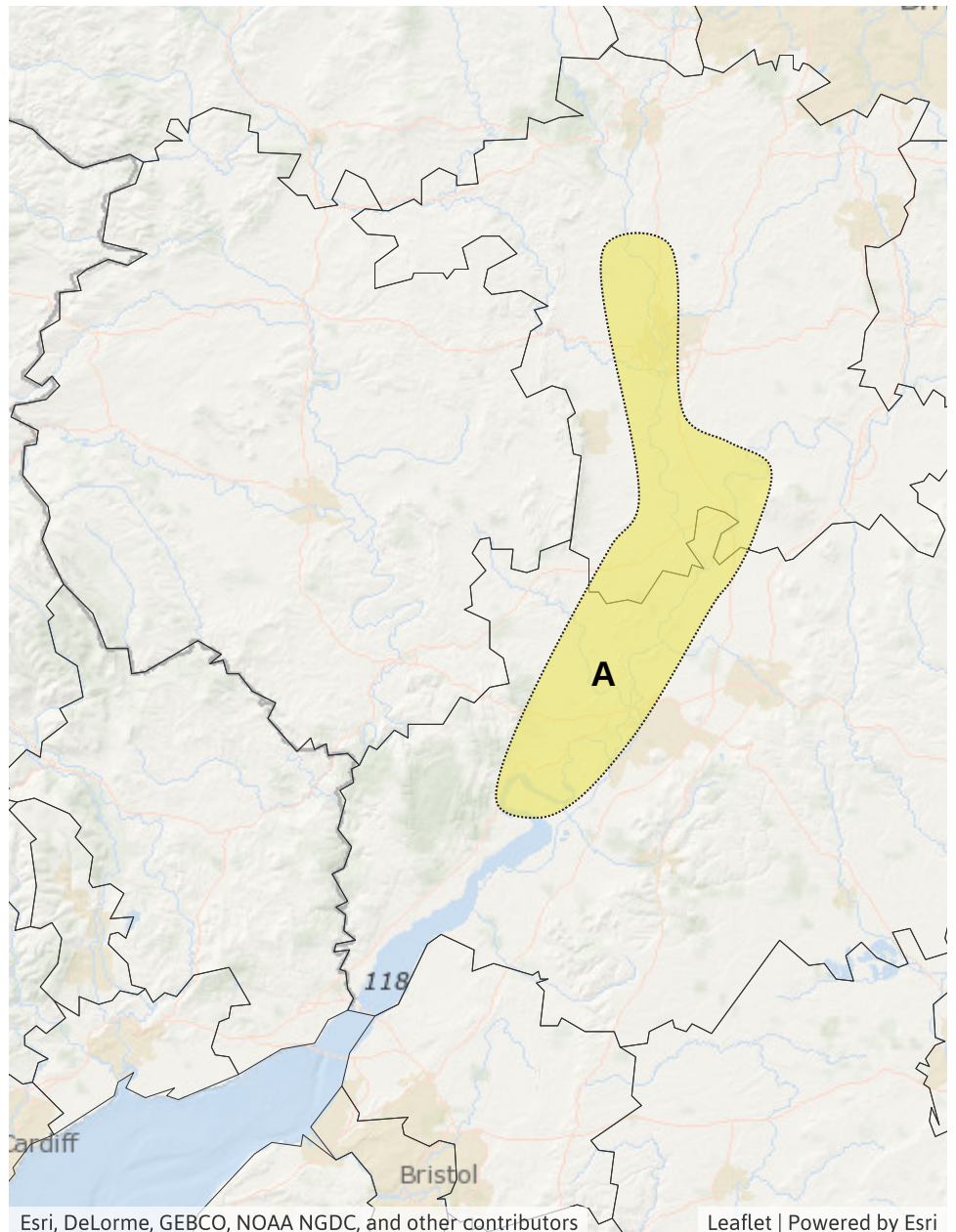
Ongoing river flooding impacts expected for parts of England today (Wednesday). Minor river and surface water flooding is probable across parts of England and Wales on Thursday and Friday. The overall flood risk is LOW.

Specific Areas of Concern Map 1 - Wednesday 14 February 2024

RISK AREA A
Impact **MINOR**
Likelihood **HIGH**

Source River
Likely duration 1 Day

River flooding is expected on the lower River Severn today.



Flood Guidance Statement

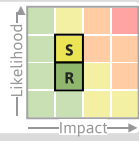
10:30hrs Wednesday 14 February 2024

Specific Areas of Concern Map 2 - Thursday 15 and Friday 16 February 2024

RISK AREA B

Impact **MINOR**

Likelihood **MEDIUM**



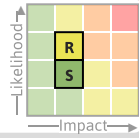
Source River Surface
Likely duration 1 Day

Surface water flooding on Thursday with river response continuing into Friday.

RISK AREA C

Impact **MINOR**

Likelihood **MEDIUM**



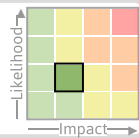
Source River Surface
Likely duration 2 Days

Flooding probable from the River Avon and River Soar following heavy rain.

RISK AREA D

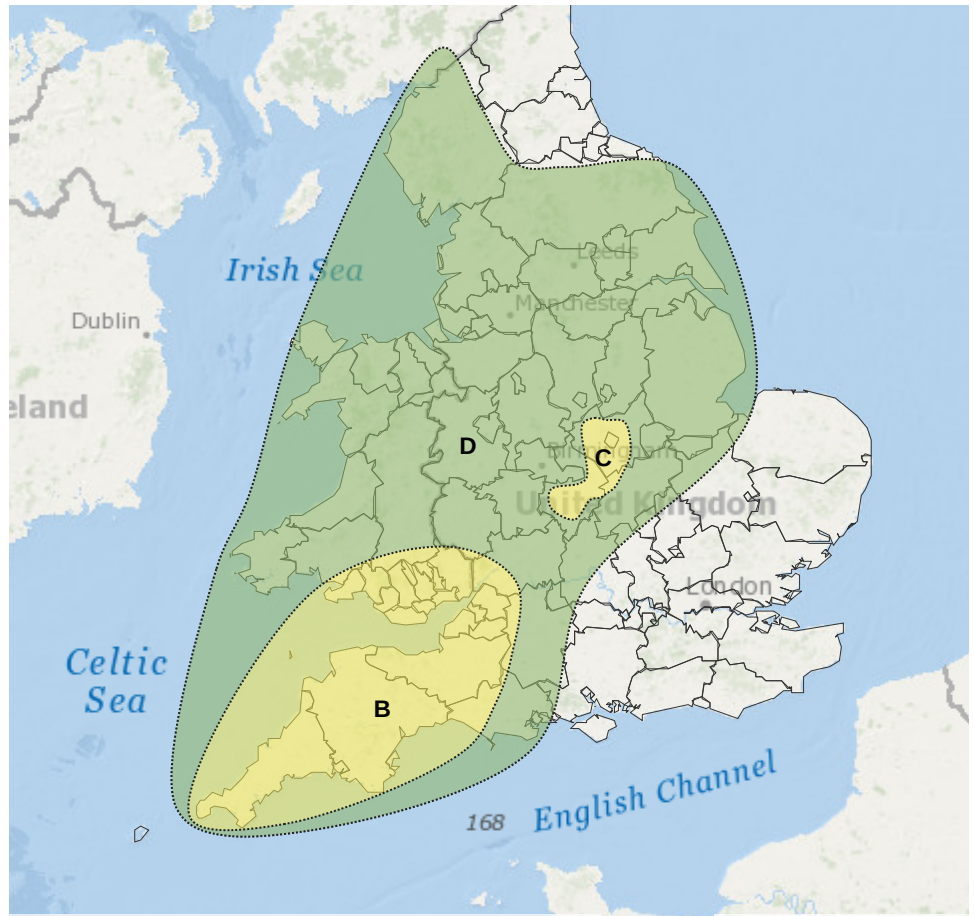
Impact **MINOR**

Likelihood **LOW**



Source River Surface
Likely duration 2 Days

Heavy rain possible through Thursday, with river response continuing into Friday.



Esri, DeLorme, GEBCO, NOAA NGDC, and other contributors

Leaflet | Powered by Esri

Specific Areas of Concern Map 3 - Wednesday 14 to Sunday 18 February 2024

RISK AREA E

Impact **MINOR**

Likelihood **LOW**



Source Ground
Likely duration 5 Days

Groundwater impacts in Malton area.



Esri, DeLorme, GEBCO, NOAA NGDC, and other contributors

Leaflet | Powered by Esri

Assessment of flood risk



Rivers

The river flood risk is LOW.

Localised minor river flooding impacts are expected today (Wednesday) along the lower River Severn as it responds to recent rainfall. See Specific Areas of Concern Map 1 for details.

Minor river flooding impacts are probable across parts of the Midlands and possible more widely on Thursday and Friday, due to widespread heavy rain. See Specific Areas of Concern Map 2 for details. Minor river flooding impacts are also possible but not expected more widely across England and Wales from Thursday to Saturday.



Surface water

The surface water flood risk is LOW.

Minor surface water flooding impacts are probable on Thursday due to widespread heavy rain. See Specific Areas of Concern Map 2. Further minor surface water flooding impacts are possible but not expected on Saturday across Wales, the North and South West of England.

Impacts could include localised flooding from urban and fast responding smaller watercourses/catchments, drains, channels and flooding from overland flow.



Groundwater

The groundwater flood risk is VERY LOW for the next five days.

Minor groundwater impacts are possible in the Malton area of North Yorkshire throughout the next five days.



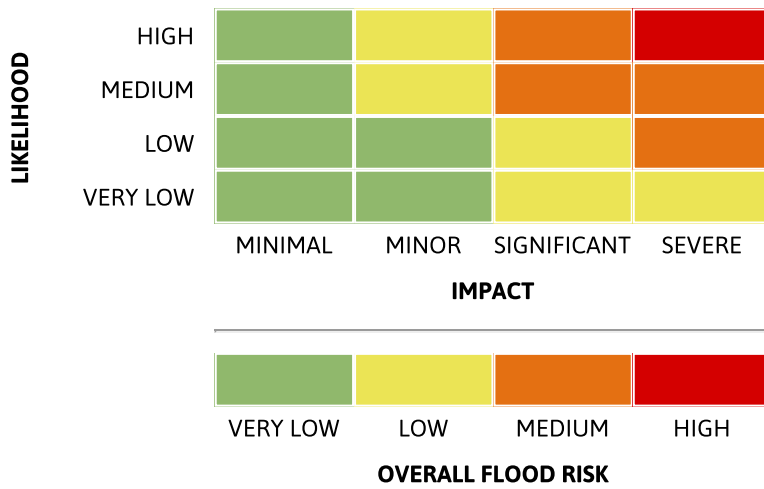
Coastal/Tidal

The coastal/tidal flood risk is VERY LOW for the next five days.

Flood Guidance Statement

10:30hrs Wednesday 14 February 2024

Flood risk matrix



Summary of potential impacts

MINIMAL

Isolated and minor flooding of low-lying land and roads
Isolated spray/wave on coastal promenades
Little or no disruption to travel, but wet road surfaces

MINOR

Localised flooding of land and roads
Flooding affecting individual properties
Disruption to travel and key sites in flood plans

SIGNIFICANT

Flooding affecting parts of communities
Possible danger to life and damage to buildings/structures
Disruption to travel and key sites in flood plans

SEVERE

Danger to life, severe disruption to travel
Widespread flooding affecting whole communities
Widespread disruption or loss of infrastructure
Large scale evacuation of properties possible

Next statement due **10:30hrs Thursday 15 February 2024 (all times are local)**

Contact details **Flood Forecasting Centre Duty Hydrometeorologist - 0330 135 4400**

More information <https://www.gov.uk/government/organisations/flood-forecasting-centre>