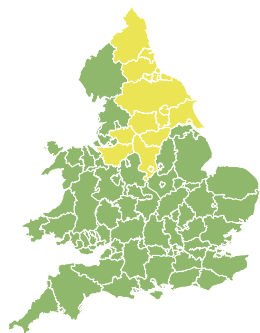


Flood Guidance Statement

15:30hrs Thursday 19 October 2023

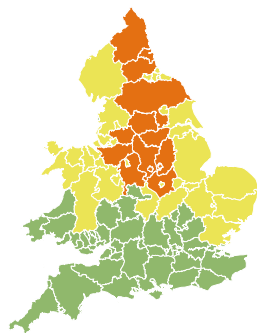


Thursday

19 Oct 2023 15:30-23:59

Trend since last FGS

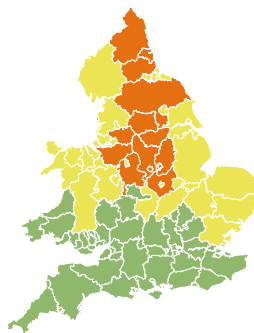
Steady



Friday

20 Oct 2023

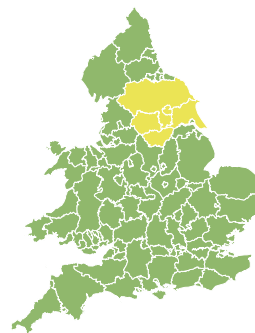
Steady



Saturday

21 Oct 2023

Steady



Sunday

22 Oct 2023

Increased



Monday

23 Oct 2023

Steady

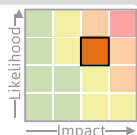


Significant inland flooding impacts are probable in the north of England on Friday and Saturday and possible more widely. The overall flood risk for England and Wales for the next five days is MEDIUM.

Specific Areas of Concern Map 1 - Thursday 19 to Saturday 21 October 2023

RISK AREA A

Impact **SIGNIFICANT**
Likelihood **MEDIUM**

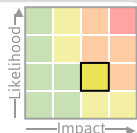


Source River Surface
Likely duration 2 Days

Significant river and surface water flooding impacts probable on Friday into Saturday

RISK AREA B

Impact **SIGNIFICANT**
Likelihood **LOW**



Source River Surface
Likely duration 3 Days

Surface water impacts only on Thursday.
River and surface water Fri and Sat. Surface water impacts only in Lancs and Cumbria

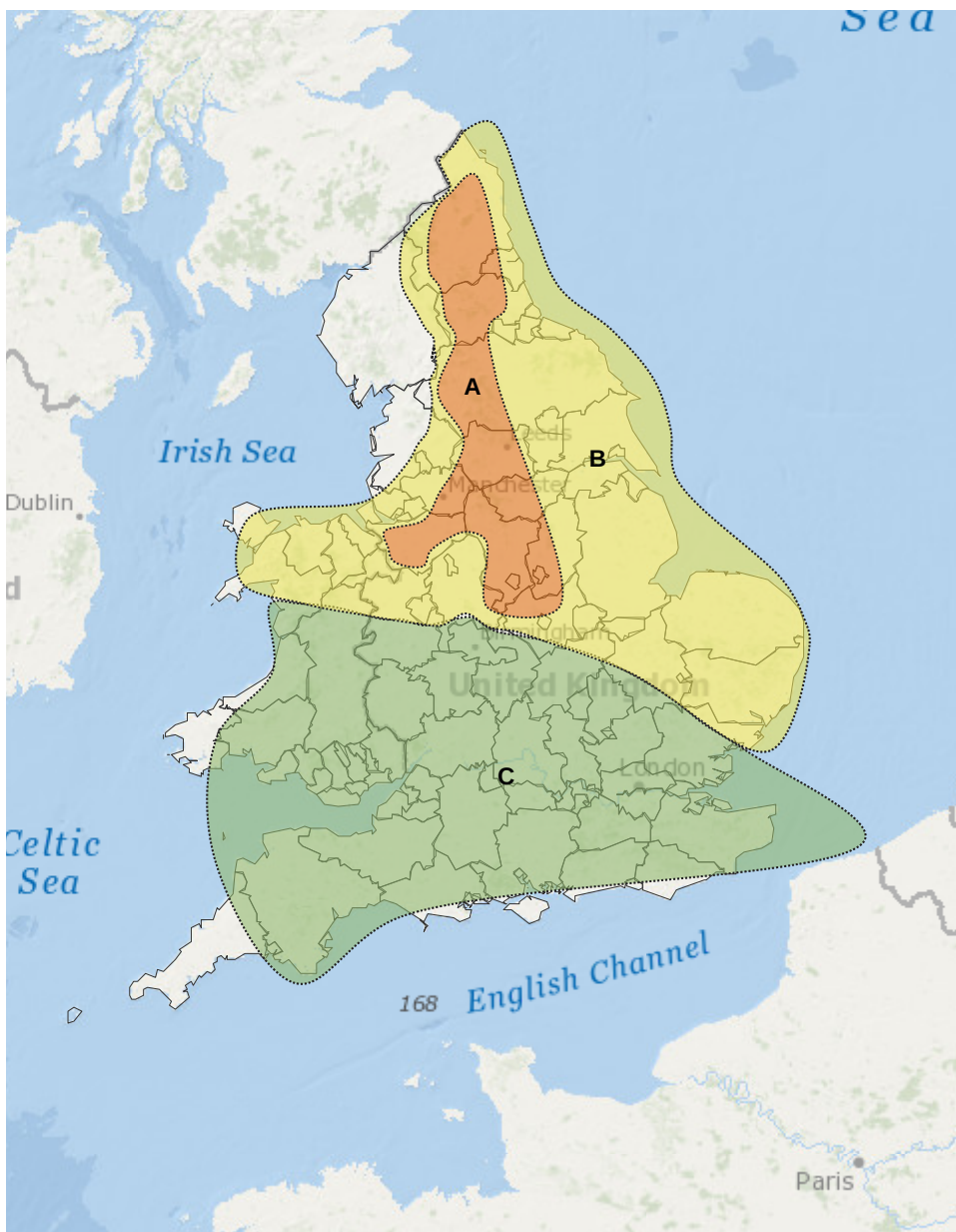
RISK AREA C

Impact **MINOR**
Likelihood **LOW**



Source River Surface
Likely duration 2 Days

Surface water flood risk on Friday. River risk only continues into Saturday

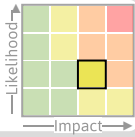


Flood Guidance Statement

15:30hrs Thursday 19 October 2023

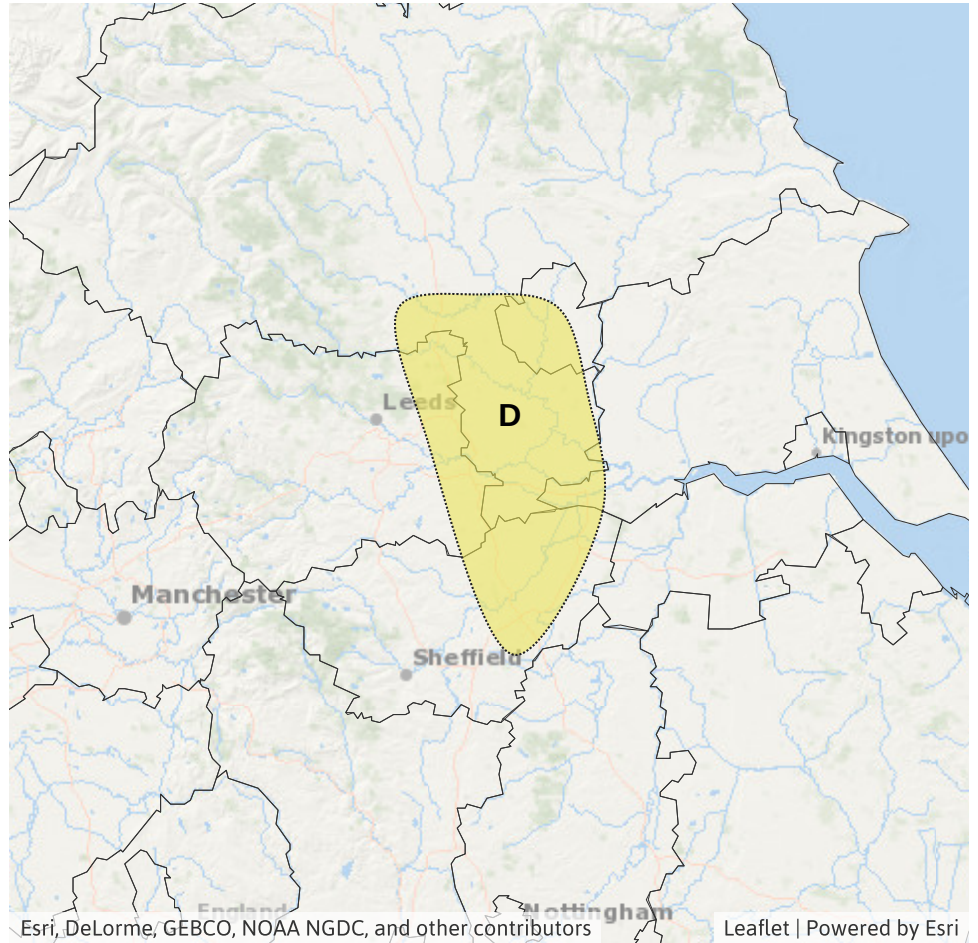
Specific Areas of Concern Map 2 - Sunday 22 October 2022

RISK AREA D
Impact **SIGNIFICANT**
Likelihood **LOW**



Source River
Likely duration 1 Day

Ongoing river responses in the rivers in the Ouse, Lower Aire and Lower Don



Assessment of flood risk



Rivers

The river flood risk is MEDIUM.

Significant river flooding impacts are probable across parts of the north of England on Friday and Saturday.

Significant river flooding impacts are possible across other parts of England and Wales on Friday and Saturday. This is due to persistent and heavy rain affecting these areas. See Areas of Concern Map.

Minor river flooding impacts are possible across parts England and Wales on Friday and Saturday, see Areas of Concern Map, and are possible but not expected more widely.

Significant ongoing river flooding impacts are also possible in parts of north east England into Sunday. River responses are expected to continue into Sunday and Monday, more widely across parts of England and Wales. Where rivers responses do continue minor impacts are possible, but not expected.



Surface water

The surface water flood risk is MEDIUM.

Significant surface water flooding impacts are probable across parts of the north of England on Friday and Saturday.

Significant surface water flooding impacts are possible across other parts of England and Wales from Thursday to Saturday. See Areas of Concern Map.

Localised minor surface water flooding impacts are possible across parts England and Wales on Friday and Saturday, see Areas of Concern Map, and are possible but not expected more widely across England and Wales on Thursday and Friday, and in parts of the east of England on Saturday.

Impacts could include localised flooding from urban and fast responding smaller watercourses/catchments, drains, channels and flooding from overland flow.



Coastal/Tidal

The coastal/tidal flood risk is VERY LOW for the next five days.

Minor coastal flooding impacts are possible but not expected along the coasts of Yorkshire and North East England on Friday and Saturday. Minimal coastal flooding impacts are possible more widely along the coast of East England on Friday and Saturday.

This is due to a combination of large waves and wind-blown spray.



Groundwater

The groundwater flood risk is VERY LOW for the next five days.

Flood Guidance Statement

15:30hrs Thursday 19 October 2023

Flood risk matrix



Summary of potential impacts

MINIMAL

Isolated and minor flooding of low-lying land and roads
Isolated spray/wave on coastal promenades
Little or no disruption to travel, but wet road surfaces

MINOR

Localised flooding of land and roads
Flooding affecting individual properties
Disruption to travel and key sites in flood plans

SIGNIFICANT

Flooding affecting parts of communities
Possible danger to life and damage to buildings/structures
Disruption to travel and key sites in flood plans

SEVERE

Danger to life, severe disruption to travel
Widespread flooding affecting whole communities
Widespread disruption or loss of infrastructure
Large scale evacuation of properties possible

Next statement due **10:30hrs Friday 20 October 2023 (all times are local)**

Contact details **Flood Forecasting Centre Duty Hydrometeorologist - 0330 135 4400**

More information <https://www.gov.uk/government/organisations/flood-forecasting-centre>