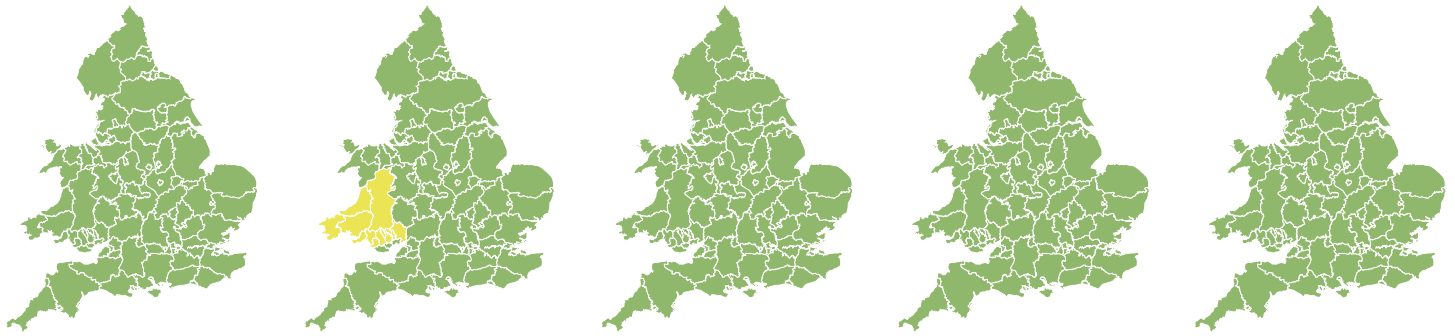


# Flood Guidance Statement

10:30hrs Saturday 12 February 2022



**Saturday**

12 Feb 2022 10:30-23:59  
Trend since last FGS

Steady →

**Sunday**

13 Feb 2022

Increased ↑

**Monday**

14 Feb 2022

Increased ↑

**Tuesday**

15 Feb 2022

Steady →

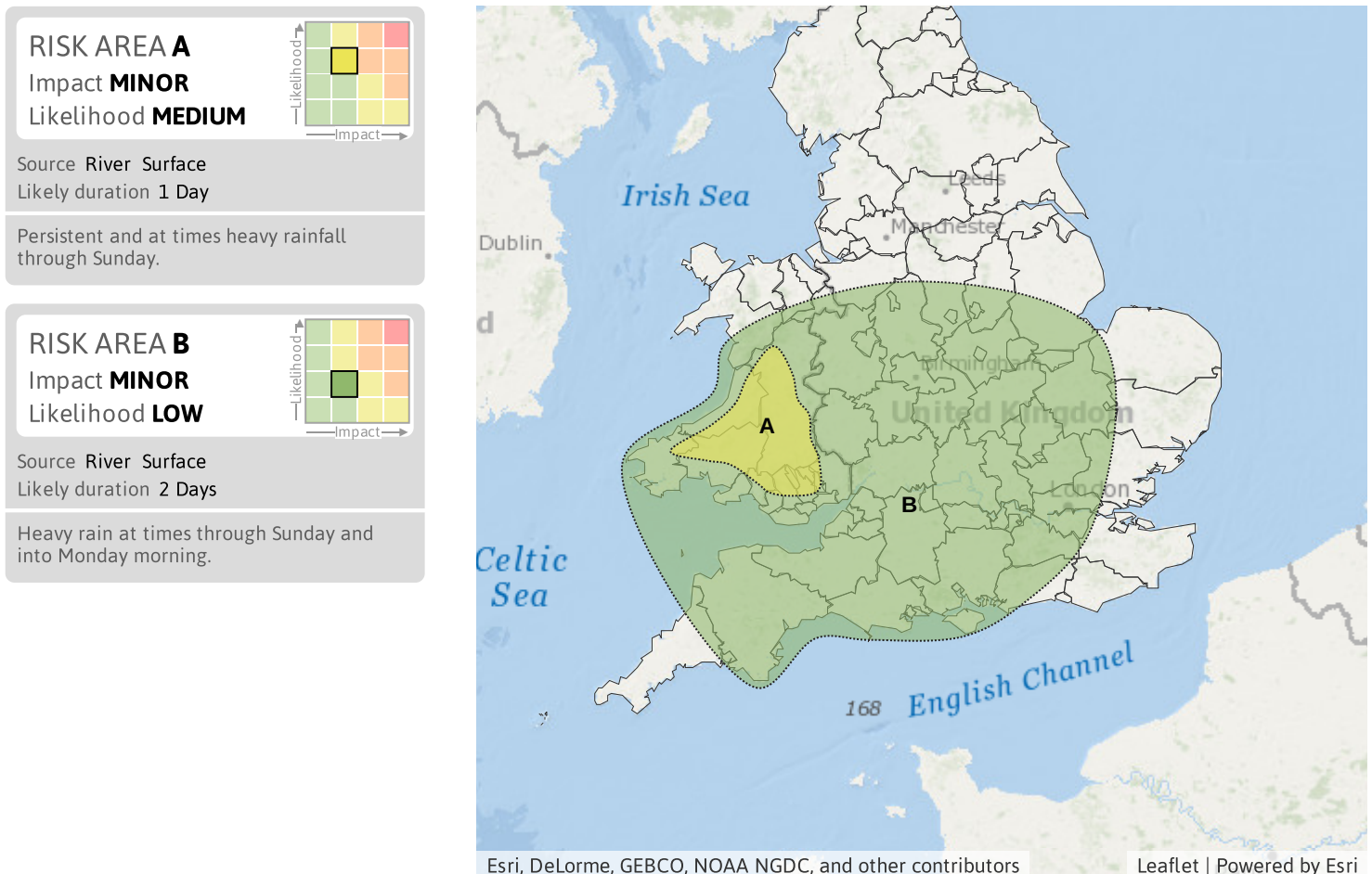
**Wednesday**

16 Feb 2022

Increased ↑

Minor inland flooding impacts are probable for parts of Wales on Sunday and possible in England from Sunday until Wednesday. The overall flood risk is LOW.

## Areas of Concern Map 1: Sunday 13 and Monday 14 February 2022.




# Flood Guidance Statement

10:30hrs Saturday 12 February 2022

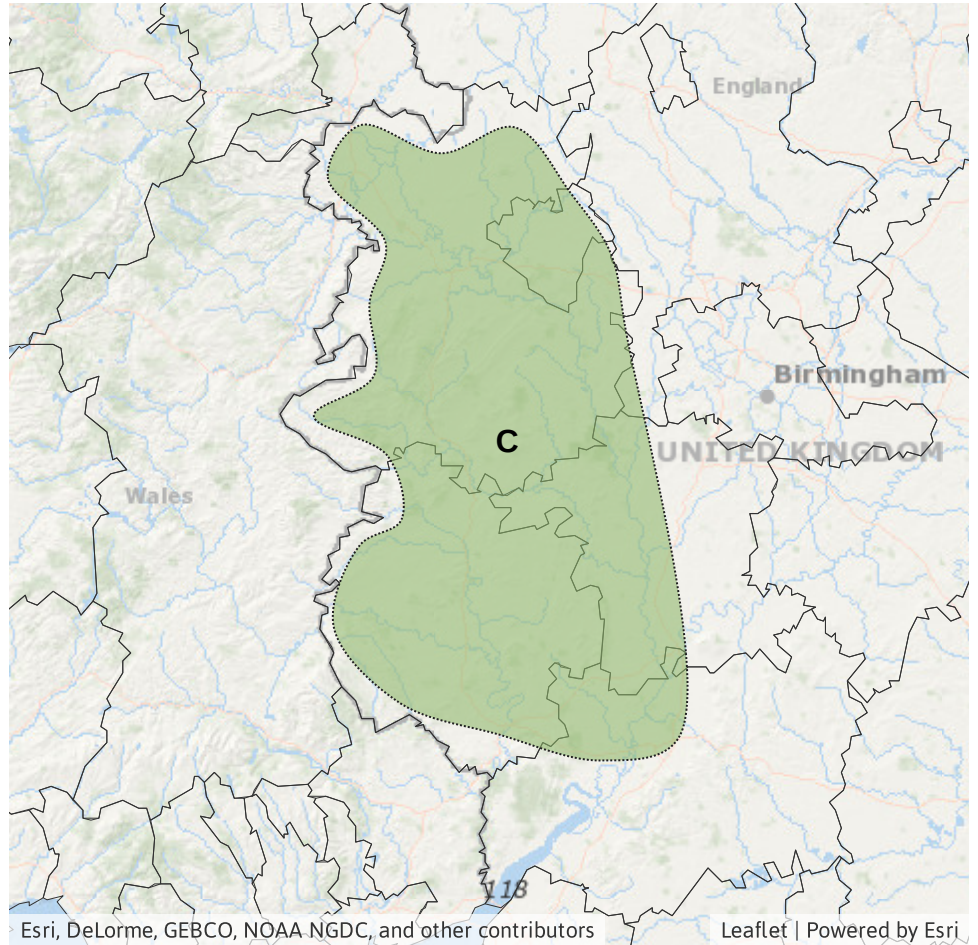
### Areas of Concern Map 2: Tuesday 15 to Wednesday 16 February 2022.

**RISK AREA C**  
Impact **MINOR**  
Likelihood **LOW**



Source River  
Likely duration 2 + Days

Cumulative impact of weekend rainfall for larger slow responding rivers.



## Assessment of flood risk



### Rivers

---

The river flood risk is LOW on Sunday.

Minor river flooding impacts are probable for parts of Wales, and possible more widely across other parts of Wales and parts of England on Sunday and Monday, following heavy rain through the weekend. Further minor river flooding impacts are possible into Tuesday and Wednesday on slow-responding rivers in parts of the west of England. See Areas of Concern Maps for details.

Minor river flooding impacts are also possible but not expected across parts of the north-west of England today (Saturday), due to heavy rain.



### Surface water

---

The surface water flood risk is LOW on Sunday.

Minor surface water flooding impacts are probable for parts of Wales, and possible more widely across other parts of Wales and parts of England on Sunday and Monday, due to heavy rainfall. See Areas of Concern Maps for details.

Minor surface water flooding impacts are also possible but not expected across parts of the north west of England today (Saturday), due to heavy rain.



### Coastal/Tidal

---

The coastal/tidal flood risk is VERY LOW for the next five days.



### Groundwater

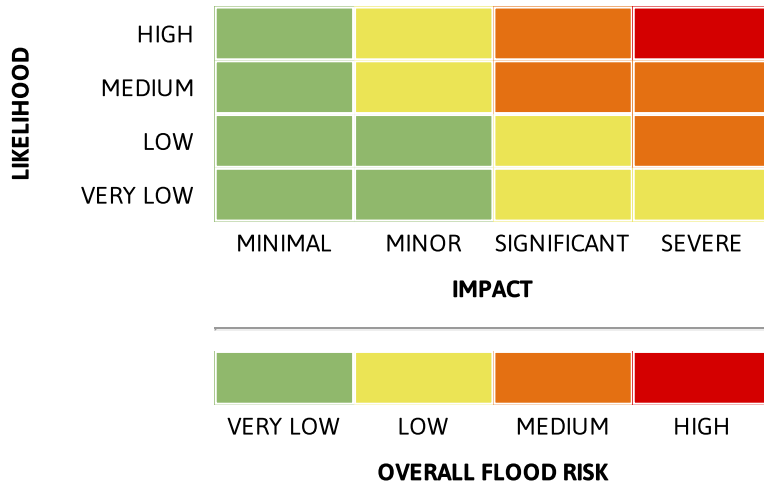
---

The groundwater flood risk is VERY LOW for the next five days.

# Flood Guidance Statement

10:30hrs Saturday 12 February 2022

## Flood risk matrix



## Summary of potential impacts

### MINIMAL

Isolated and minor flooding of low-lying land and roads  
Isolated spray/wave on coastal promenades  
Little or no disruption to travel, but wet road surfaces

### MINOR

Localised flooding of land and roads  
Flooding affecting individual properties  
Disruption to travel and key sites in flood plans

### SIGNIFICANT

Flooding affecting parts of communities  
Possible danger to life and damage to buildings/structures  
Disruption to travel and key sites in flood plans

### SEVERE

Danger to life, severe disruption to travel  
Widespread flooding affecting whole communities  
Widespread disruption or loss of infrastructure  
Large scale evacuation of properties possible

Next statement due **10:30hrs Sunday 13 February 2022 (all times are local)**

Contact details **Flood Forecasting Centre Duty Hydrometeorologist - 0330 135 4400**

More information <http://www.ffc-environment-agency.metoffice.gov.uk>