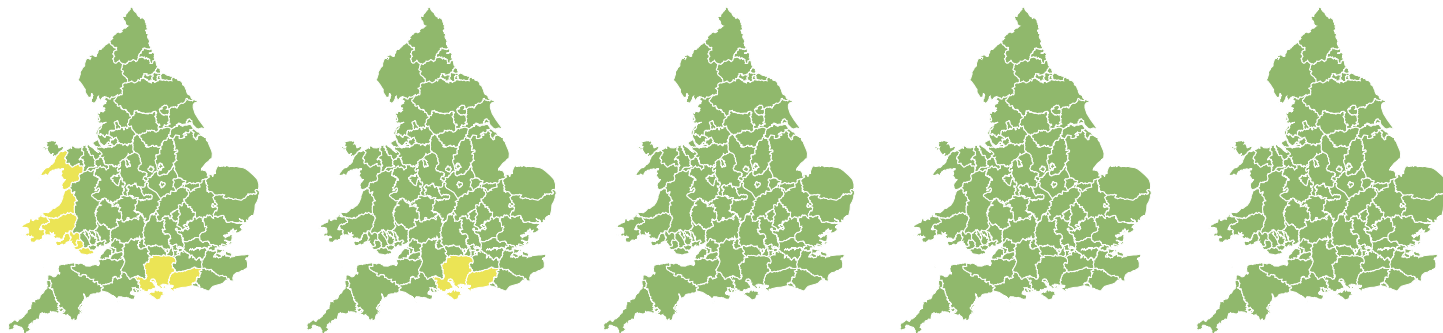


Flood Guidance Statement

10:30hrs Tuesday 07 December 2021



Tuesday

7 Dec 2021 10:30-23:59

Trend since last FGS

Steady →

Wednesday

8 Dec 2021

Decreased ↓

Thursday

9 Dec 2021

Steady →

Friday

10 Dec 2021

Steady →

Saturday


11 Dec 2021

Steady →

Minor coastal flooding is probable along parts of the south coast of England and the coast of Wales today (Tuesday) and Wednesday. Minor coastal and inland flooding is possible elsewhere. The overall flood risk is LOW.

Specific Areas of Concern Map 1: Tuesday 7 and Wednesday 8 December 2021

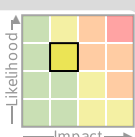
RISK AREA A
Impact **MINOR**
Likelihood **MEDIUM**



Source Coastal/Tidal
Likely duration 2 Days

Large waves and high tides may cause coastal flood impacts.

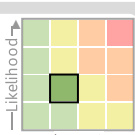
RISK AREA B
Impact **MINOR**
Likelihood **MEDIUM**



Source Coastal/Tidal
Likely duration 1 Day

Minor coastal flooding is possible around the high tides on Tuesday.

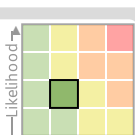
RISK AREA C
Impact **MINOR**
Likelihood **LOW**



Source Coastal/Tidal
Likely duration 2 Days

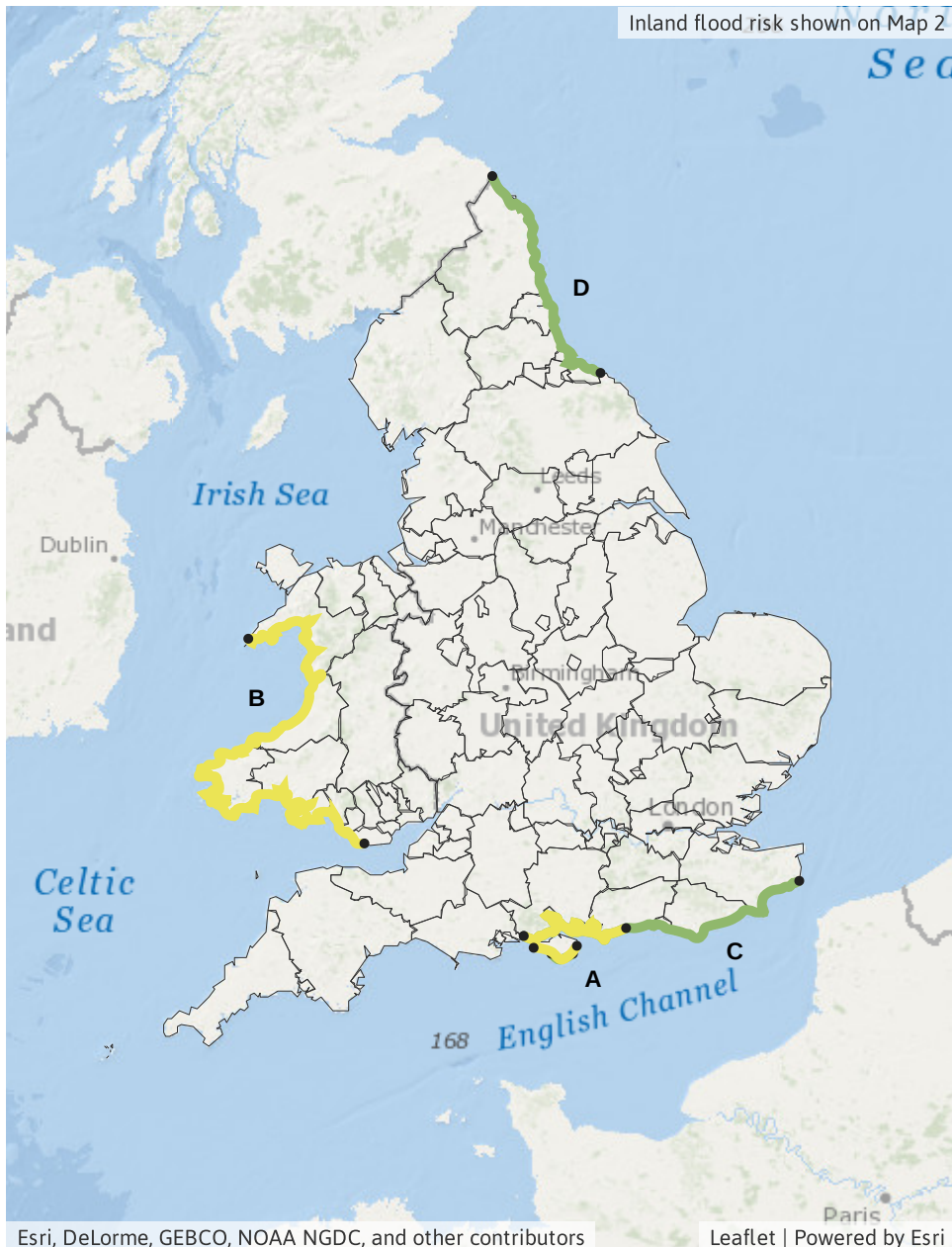
Strong winds, large waves and high tides bringing possible coastal impacts.

RISK AREA D
Impact **MINOR**
Likelihood **LOW**



Source Coastal/Tidal
Likely duration 1 Day

Minor coastal flooding is possible around the high tides on Tuesday.




Flood Guidance Statement

10:30hrs Tuesday 07 December 2021

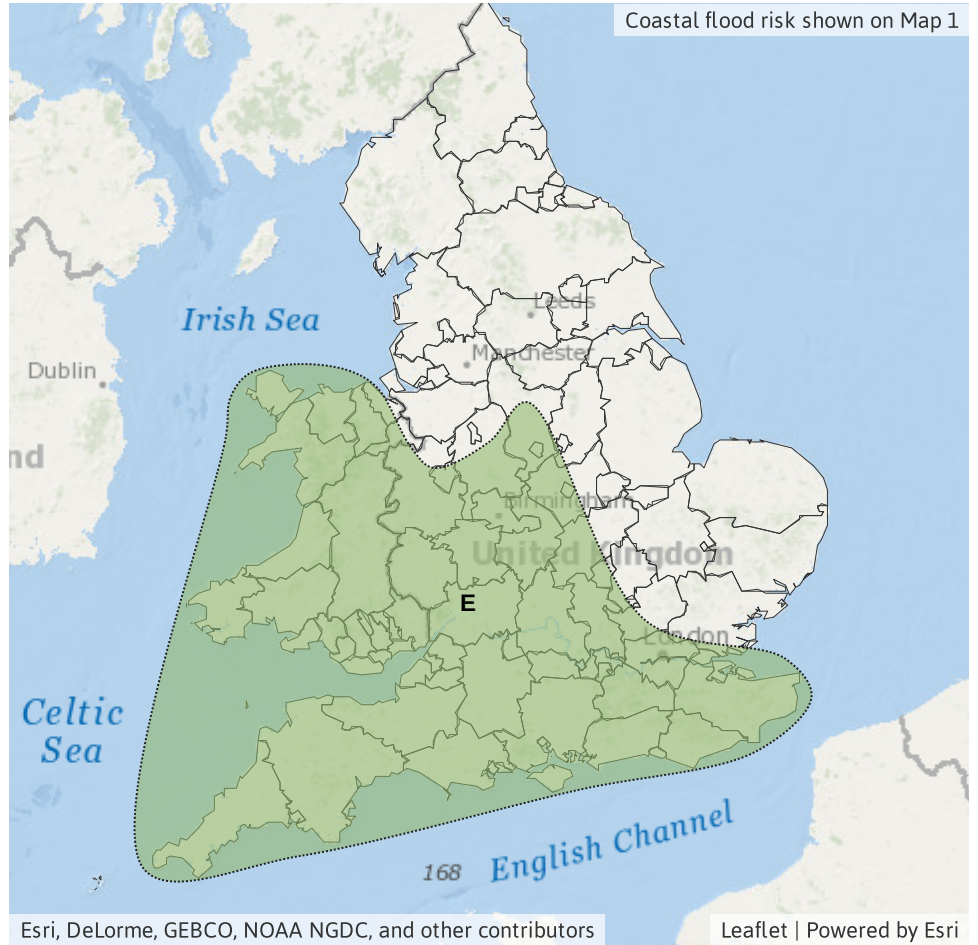
Specific Areas of Concern Map 2: Tuesday 7 and Wednesday 8 December 2021

RISK AREA E
Impact **MINOR**
Likelihood **LOW**



Source River Surface
Likely duration 2 Days

Heavy rain and showers may lead to localised flooding on Tue and Wed.



Assessment of flood risk

Coastal/Tidal

The coastal/tidal flood risk is **LOW** on Tuesday and Wednesday.

Minor coastal flooding is probable on parts of the south coast of England and parts of Wales today (Tuesday) and Wednesday, with minor coastal flooding possible elsewhere in England. See Specific Areas of Concern Map for details. This is due to large waves and surge associated with Storm Barra.

Minor coastal flooding impacts are also possible but not expected for parts of the south-west and north-west of England today and Wednesday.

Surface water

The surface water flood risk is **VERY LOW** for the next five days.

Minor surface water flooding impacts are possible on Tuesday and Wednesday, in response to heavy rain and showers associated with Storm Barra. See Specific Areas of Concern Map for details.

Rivers

The river flood risk is **VERY LOW** for the next five days.

Minor river flooding impacts are possible on Tuesday and Wednesday, in response to heavy rain and showers associated with Storm Barra. Small, fast responding catchments are most at risk. See Specific Areas of Concern Map for details.

Groundwater

The groundwater flood risk is **VERY LOW** for the next five days.

Flood risk matrix



Summary of potential impacts

MINIMAL

Isolated and minor flooding of low-lying land and roads
Isolated spray/wave on coastal promenades
Little or no disruption to travel, but wet road surfaces

MINOR

Localised flooding of land and roads
Flooding affecting individual properties
Disruption to travel and key sites in flood plans

SIGNIFICANT

Flooding affecting parts of communities
Possible danger to life and damage to buildings/structures
Disruption to travel and key sites in flood plans

SEVERE

Danger to life, severe disruption to travel
Widespread flooding affecting whole communities
Widespread disruption or loss of infrastructure
Large scale evacuation of properties possible

Next statement due **10:30hrs Wednesday 08 December 2021 (all times are local)**

Contact details **Flood Forecasting Centre Duty Hydrometeorologist - 0330 135 4400**

More information <http://www.ffc-environment-agency.metoffice.gov.uk>