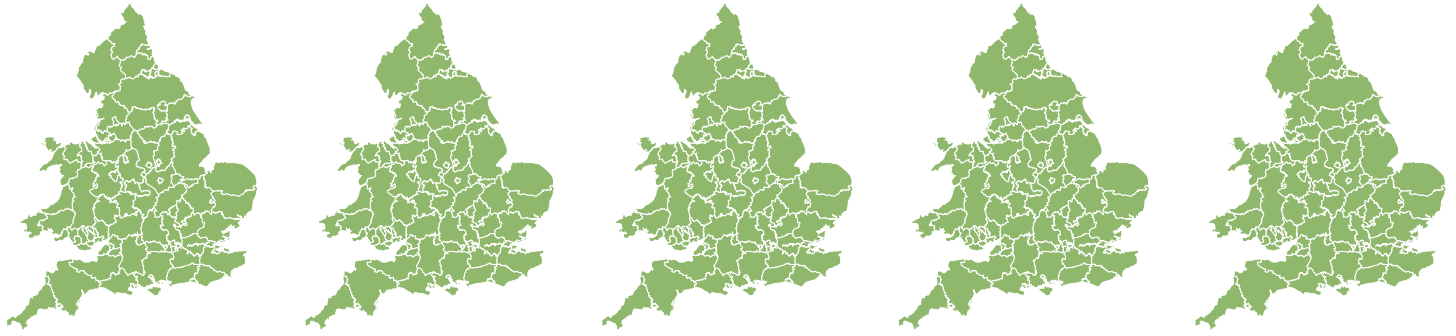


Flood Guidance Statement

10:30hrs Saturday 10 July 2021



Saturday

10 Jul 2021 10:30-23:59
Trend since last FGS

Steady



Sunday

11 Jul 2021

Increased



Monday

12 Jul 2021

Steady



Tuesday

13 Jul 2021

Steady



Wednesday

14 Jul 2021

Steady



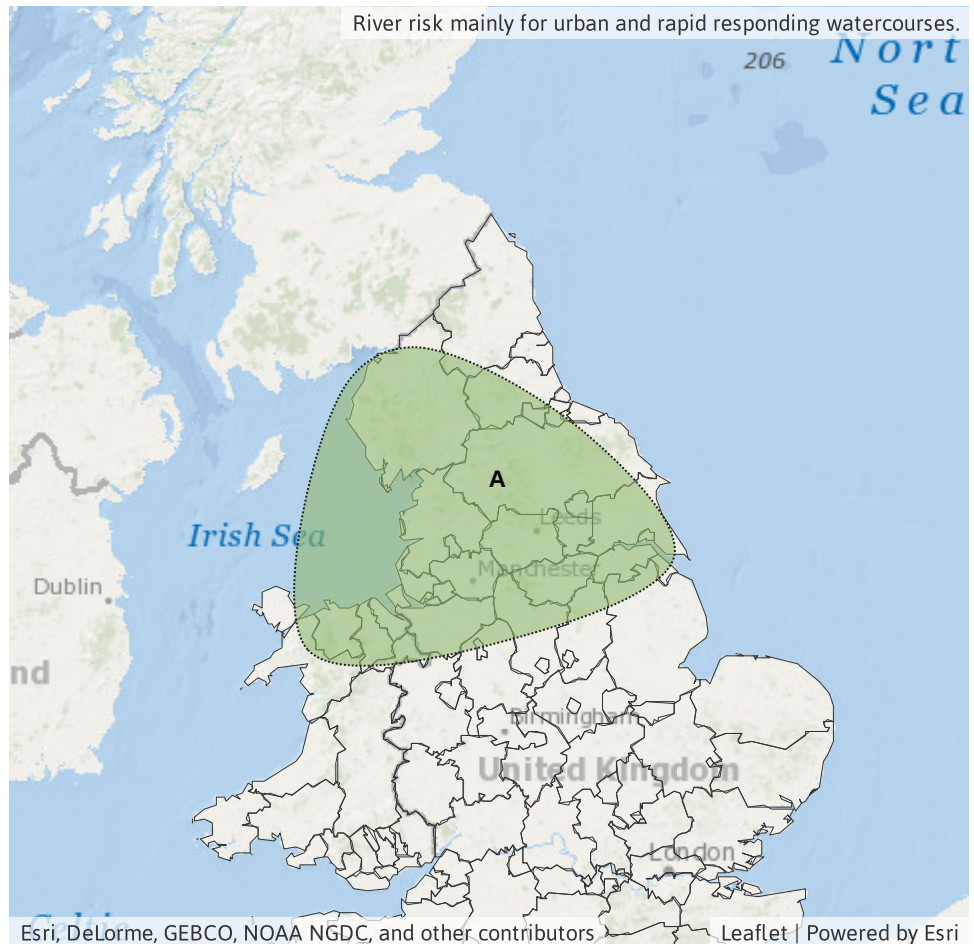
Minor inland flooding impacts are possible in parts of England and Wales from today (Saturday) through to Tuesday. The overall flood risk is VERY LOW.

Specific Area of Concern Map 1: Saturday 10 July 2021

RISK AREA A
Impact **MINOR**
Likelihood **LOW**

Source River Surface
Likely duration 1 Day

Slow moving showers and thunderstorms, impacts from mid-morning.




Flood Guidance Statement

10:30hrs Saturday 10 July 2021

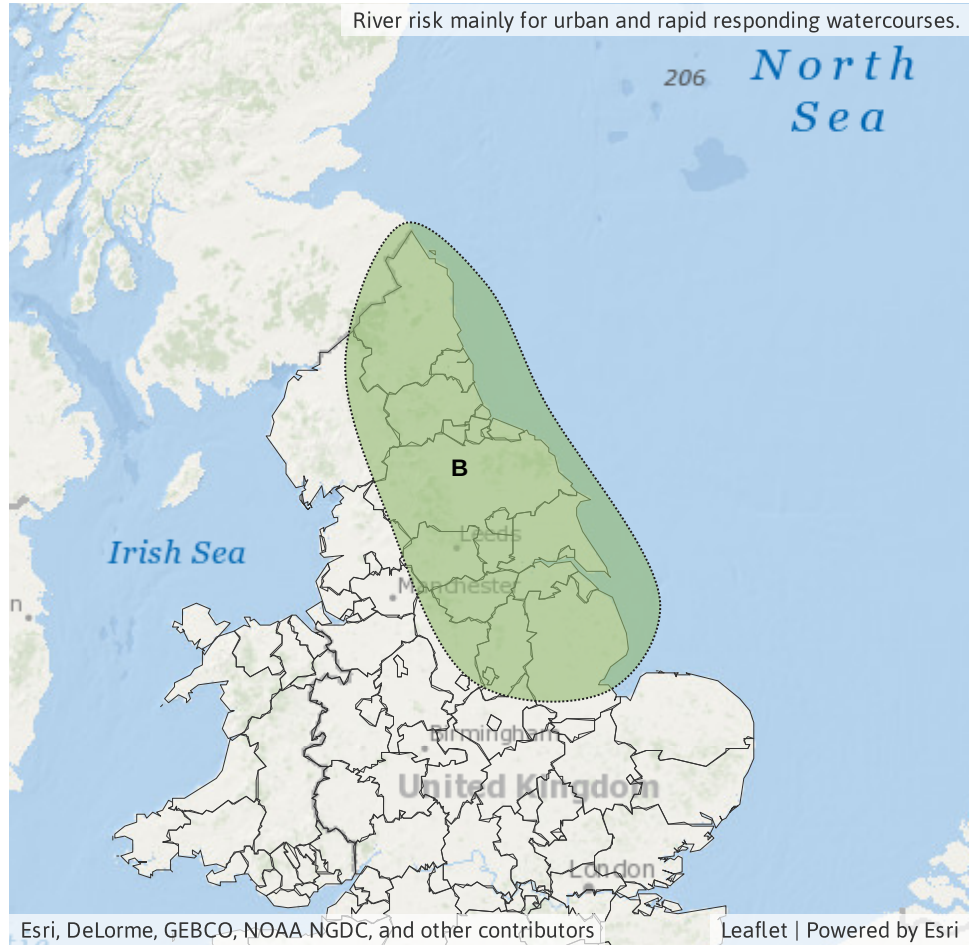
Specific Area Of Concern Map 2: Sunday 11 July 2021

RISK AREA B
Impact **MINOR**
Likelihood **LOW**



Source River Surface
Likely duration 1 Day

Slow moving showers and thunderstorms during the afternoon and evening.



Specific Areas of Concern Map 3: Monday 12 and Tuesday 13 July 2021

RISK AREA C
Impact **MINOR**
Likelihood **LOW**



Source River Surface
Likely duration 2 Days

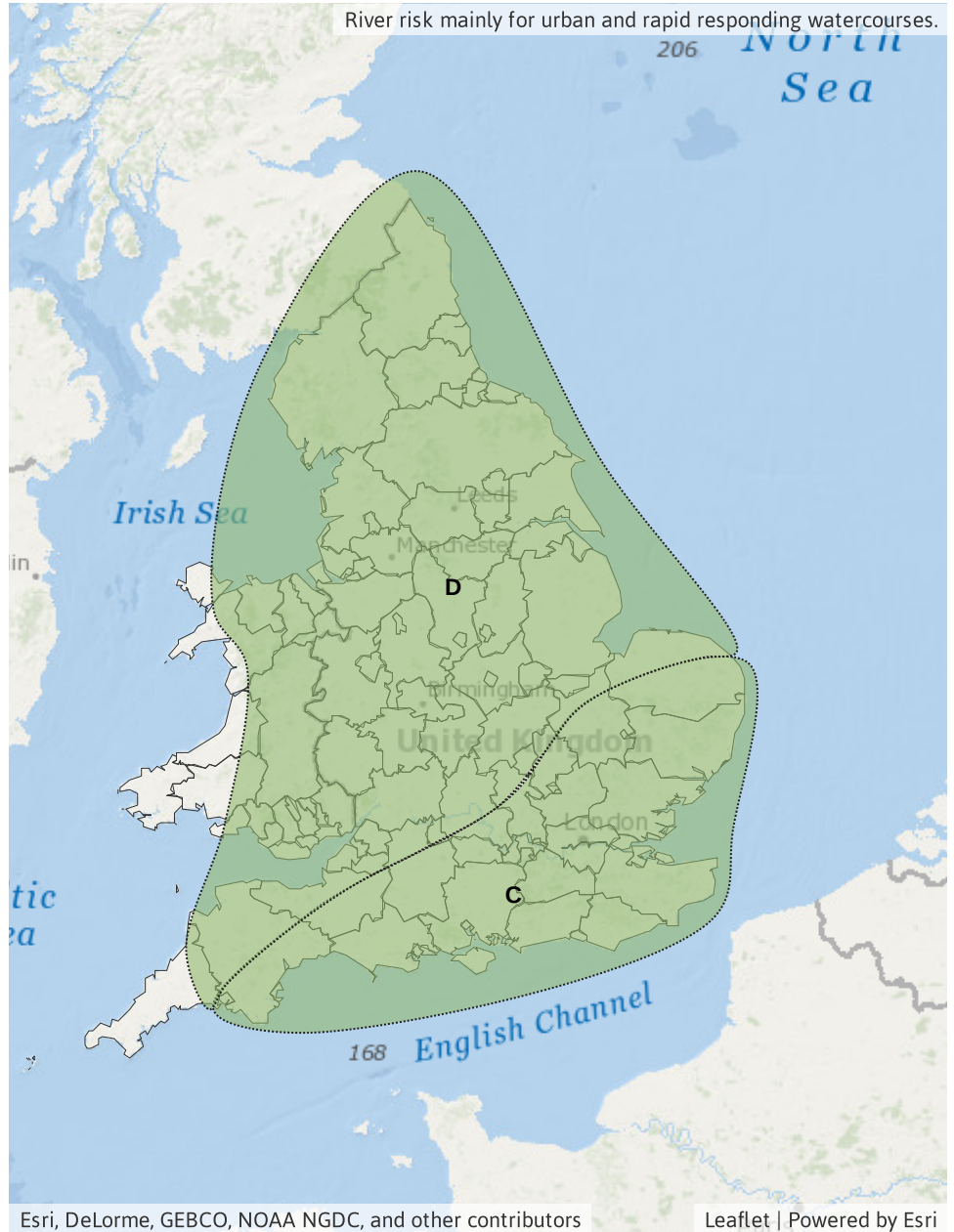
Potential for widespread, prolonged heavy rain with localised intense downpours.

RISK AREA D
Impact **MINOR**
Likelihood **LOW**



Source River Surface
Likely duration 2 Days

Slow moving, heavy showers.



Assessment of flood risk



Surface water

The surface water flood risk is VERY LOW for the next five days.

Minor surface water flooding impacts are possible across parts of England and Wales from today (Saturday) through to Tuesday. See Specific Areas of Concern Maps for more details. Minor surface water flooding impacts are possible but not expected across other parts of Wales and parts of the north, central and east of England today and tomorrow.

This is due to areas of heavy showers over the next four days and potential for heavy frontal rain in the south of England on Monday and Tuesday.



Rivers

The river flood risk is VERY LOW for the next five days.

Minor river flooding impacts are possible across parts of England and Wales from today (Saturday) through to Tuesday. See Specific Areas of Concern Maps for more details. Minor river flooding impacts are possible but not expected across other parts of Wales and parts of the north, central and east of England today and tomorrow.

Small, rapid-responding, urban rivers and watercourses are most prone.

This is due to areas of heavy showers over the next four days and potential for heavy frontal rain in the south of England on Monday and Tuesday.



Coastal/Tidal

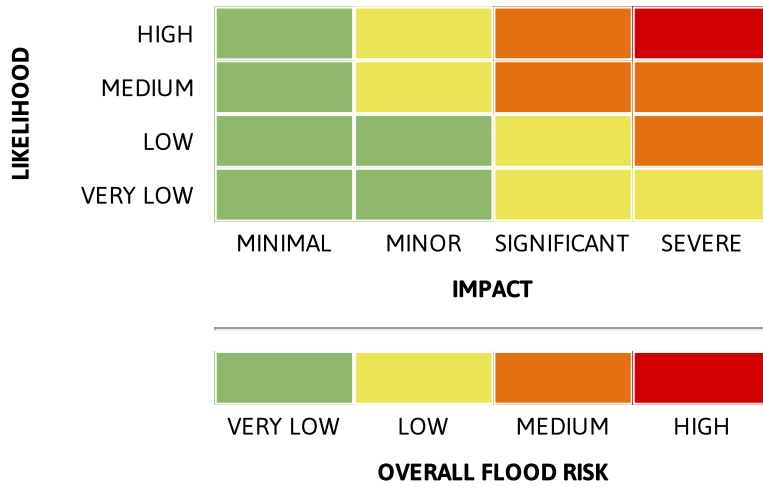
The coastal/tidal flood risk is VERY LOW for the next five days.



Groundwater

The groundwater flood risk is VERY LOW for the next five days.

Flood risk matrix



Summary of potential impacts

MINIMAL

Isolated and minor flooding of low-lying land and roads
Isolated spray/wave on coastal promenades
Little or no disruption to travel, but wet road surfaces

MINOR

Localised flooding of land and roads
Flooding affecting individual properties
Disruption to travel and key sites in flood plans

SIGNIFICANT

Flooding affecting parts of communities
Possible danger to life and damage to buildings/structures
Disruption to travel and key sites in flood plans

SEVERE

Danger to life, severe disruption to travel
Widespread flooding affecting whole communities
Widespread disruption or loss of infrastructure
Large scale evacuation of properties possible

Next statement due **10:30hrs Sunday 11 July 2021 (all times are local)**

Contact details **Flood Forecasting Centre Duty Hydrometeorologist - 0330 135 4400**

More information <http://www.ffc-environment-agency.metoffice.gov.uk>