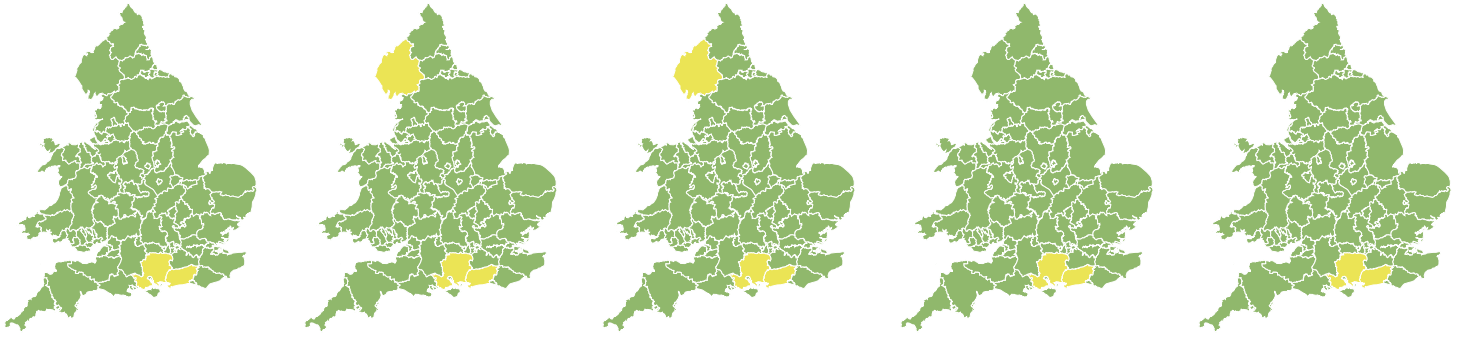


Flood Guidance Statement

10:30hrs Monday 22 February 2021



Monday

22 Feb 2021 10:30-23:59
Trend since last FGS

Steady →

Tuesday

23 Feb 2021

Increased ↑

Wednesday

24 Feb 2021

Increased ↑

Thursday

25 Feb 2021

Steady →

Friday

26 Feb 2021

Steady →

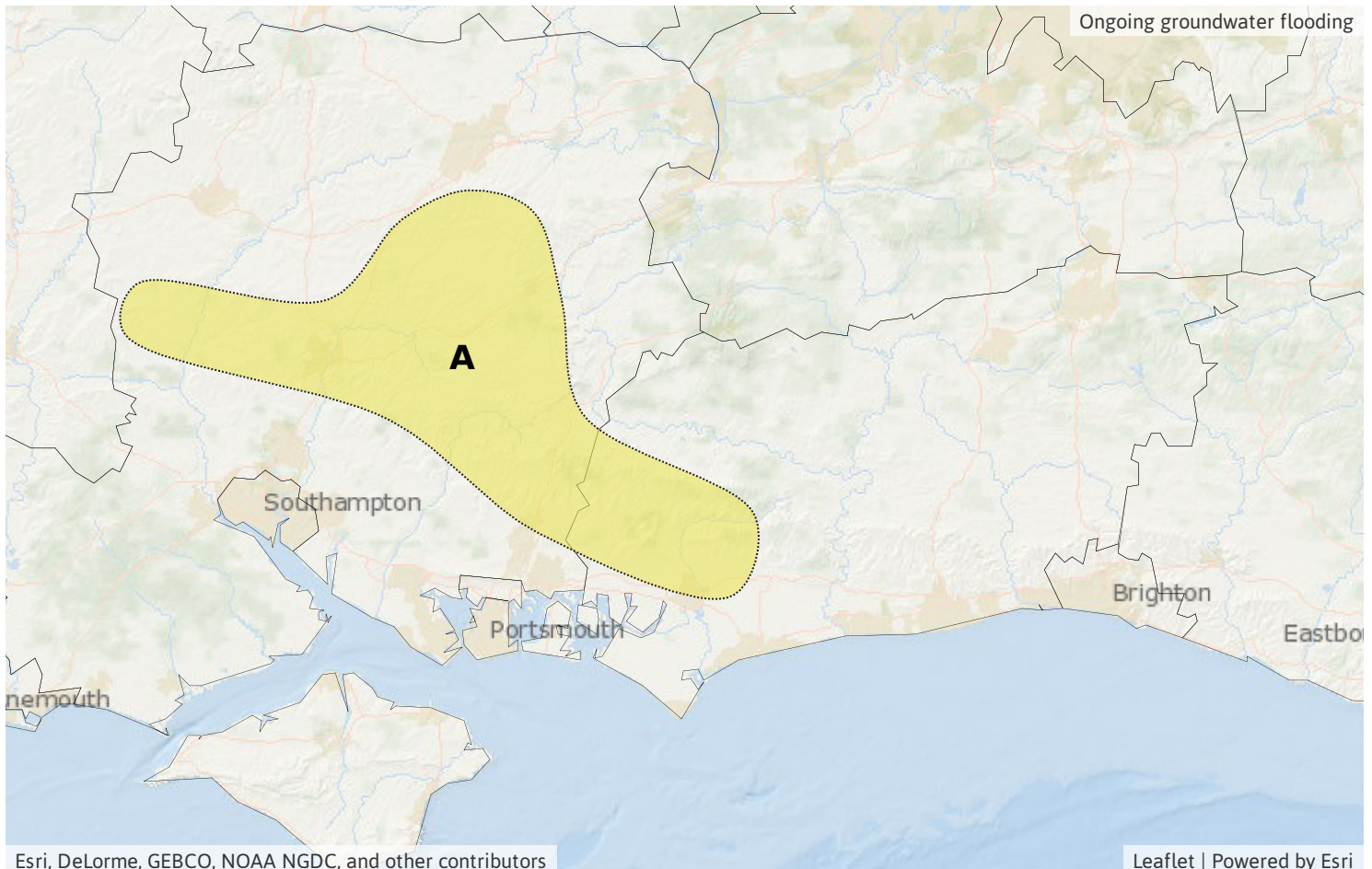
Minor groundwater flooding impacts are expected in parts of the south of England for the next five days. Minor surface water flooding impacts are probable in Cumbria on Tuesday and Wednesday. The overall flood risk is LOW.

Specific Areas of Concern Map 1: Monday 22 February onwards

RISK AREA A
Impact **MINOR**
Likelihood **HIGH**

Source Ground
Likely duration 5 + Days

Localised groundwater flooding impacts affecting a few properties.

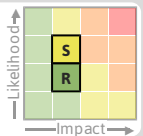


Flood Guidance Statement

10:30hrs Monday 22 February 2021

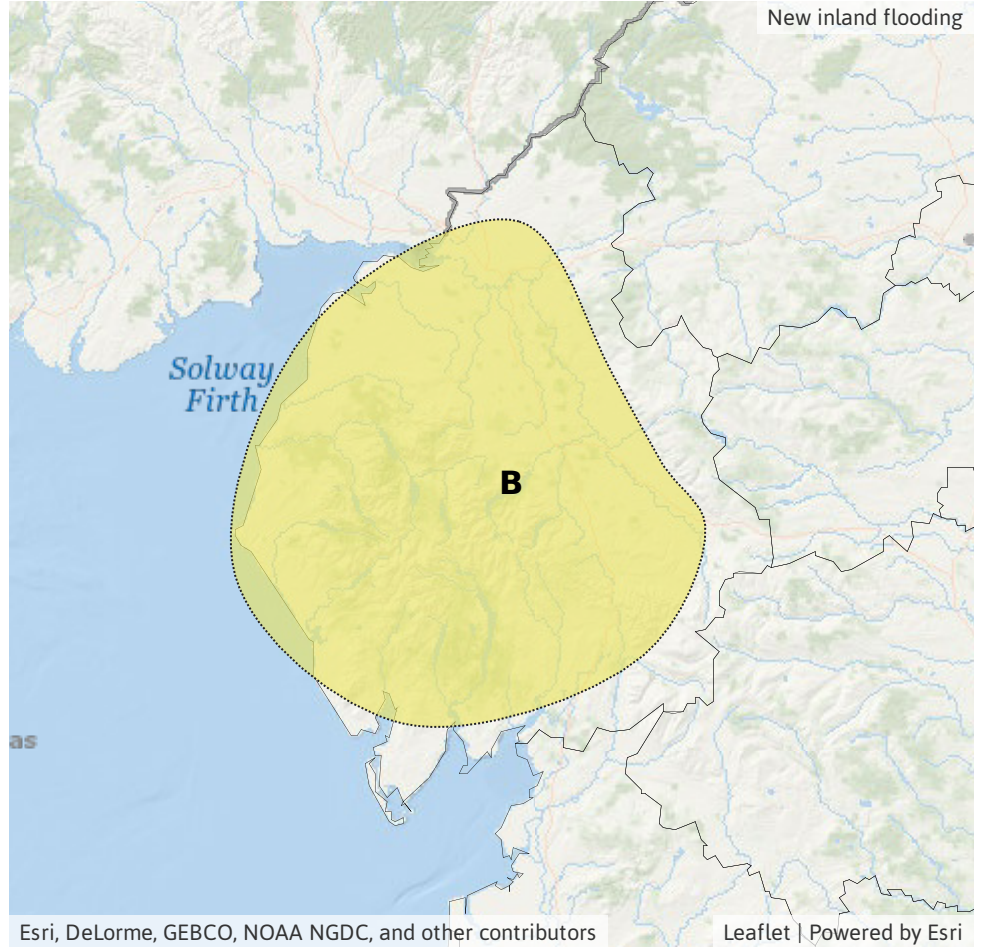
Specific Areas of Concern Map 2 - Tuesday 23 to Wednesday 24 February

RISK AREA B
Impact **MINOR**
Likelihood **MEDIUM**



Source River Surface
Likely duration 2 Days

Minor inland flood impacts from persistent, heavy rain.



Assessment of flood risk



Groundwater

The groundwater flood risk is LOW for the next five days.

Minor groundwater flooding is expected in parts of Hampshire and West Sussex for the next five days. See Specific Areas of Concern Map 1 for details.

Groundwater levels are high in many other parts of the country, particularly in North Yorkshire, the East Riding of Yorkshire and Kent, as well as other parts of the south and east of England.



Surface water

The surface water flood risk is LOW for Tuesday and Wednesday.

Minor surface water flooding impacts are probable in Cumbria on Tuesday and Wednesday and possible but not expected in parts of Wales. This is due to persistent and heavy frontal rain on wet ground. See Specific Areas of Concern Map 2 for details.



Rivers

The river flood risk is VERY LOW for the next five days.

Minor river flooding impacts are possible but not expected in parts of Wales today through to Wednesday and in Cumbria on Tuesday and Wednesday due to further heavy rain.



Coastal/Tidal

The coastal/tidal flood risk is VERY LOW for the next five days.

Flood Guidance Statement

10:30hrs Monday 22 February 2021

Flood risk matrix



Summary of potential impacts

MINIMAL

Isolated and minor flooding of low-lying land and roads
Isolated spray/wave on coastal promenades
Little or no disruption to travel, but wet road surfaces

MINOR

Localised flooding of land and roads
Flooding affecting individual properties
Disruption to travel and key sites in flood plans

SIGNIFICANT

Flooding affecting parts of communities
Possible danger to life and damage to buildings/structures
Disruption to travel and key sites in flood plans

SEVERE

Danger to life, severe disruption to travel
Widespread flooding affecting whole communities
Widespread disruption or loss of infrastructure
Large scale evacuation of properties possible

Next statement due **10:30hrs Tuesday 23 February 2021 (all times are local)**

Contact details **Flood Forecasting Centre Duty Hydrometeorologist - 0300 12345 01**

More information **<http://www.ffc-environment-agency.metoffice.gov.uk>**