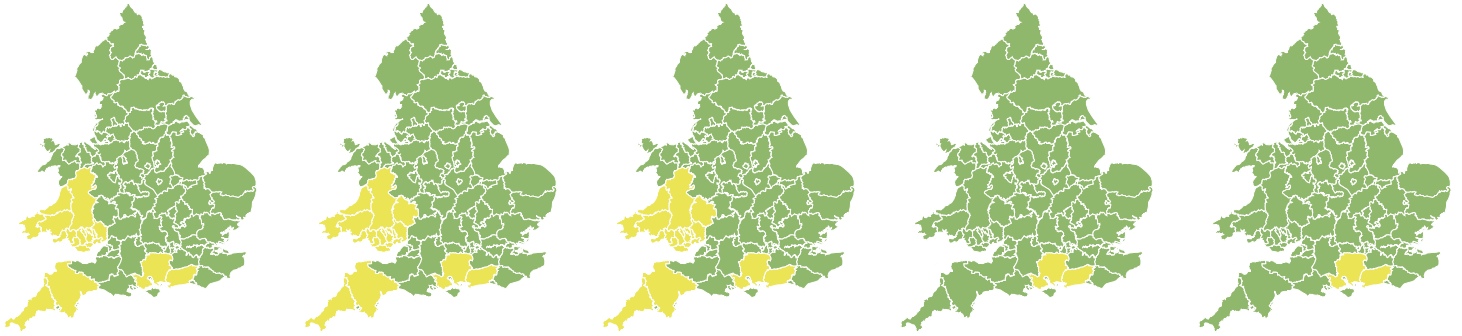


Flood Guidance Statement

10:30hrs Friday 19 February 2021



Friday

19 Feb 2021 10:30-23:59
Trend since last FGS

Increased ↑

Saturday

20 Feb 2021

Increased ↑

Sunday

21 Feb 2021

Increased ↑

Monday

22 Feb 2021

Steady →

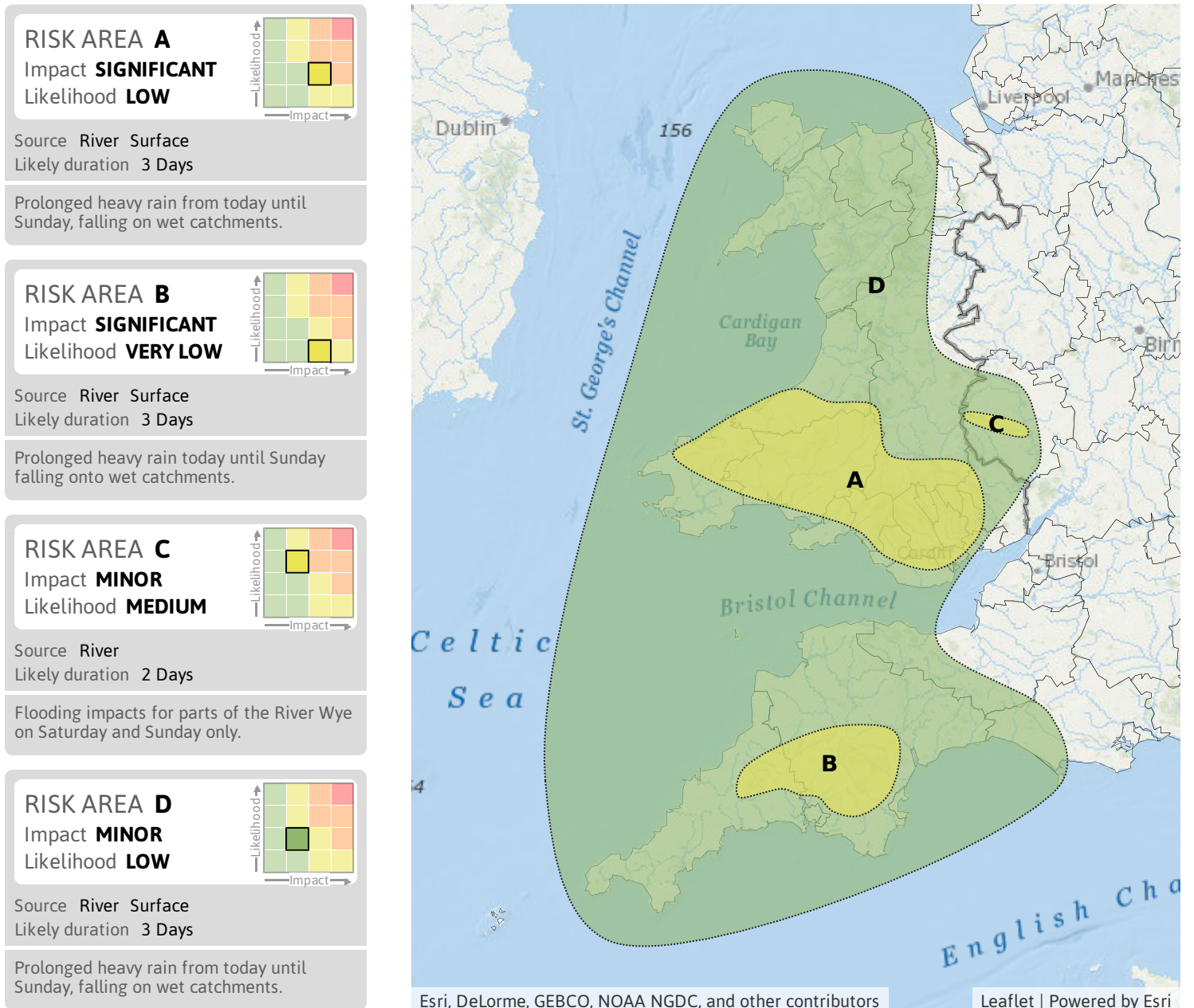
Tuesday

23 Feb 2021

Increased ↑

Significant inland flooding impacts are possible across parts of Wales and possible but not expected in south-west England from today (Friday) until Sunday. The overall flood risk is LOW.

Specific Areas of Concern Map 1: Friday 19 to Sunday 21 February



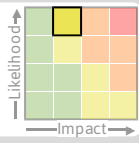
Flood Guidance Statement

10:30hrs Friday 19 February 2021

Specific Areas of Concern Map 2: Friday 19 February onwards

RISK AREA E

Impact **MINOR**
Likelihood **HIGH**

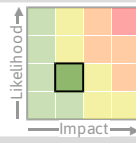


Source Ground
Likely duration 5 + Days

Localised groundwater flooding impacts affecting a few properties.

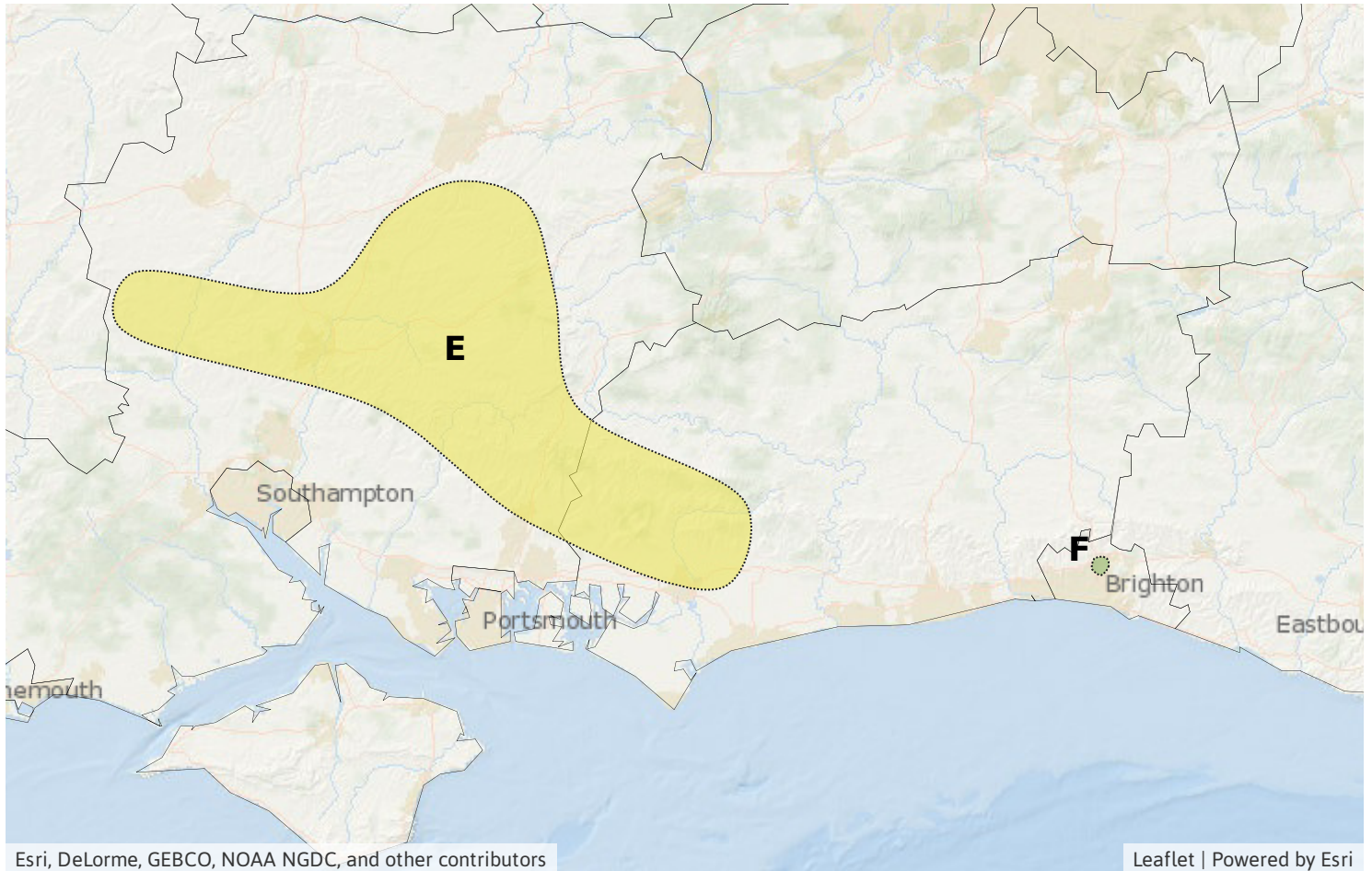
RISK AREA F

Impact **MINOR**
Likelihood **LOW**



Source Ground
Likely duration 3 + Days

Localised groundwater flooding impacts affecting a few properties from Sunday.



Esri, DeLorme, GEBCO, NOAA NGDC, and other contributors

Leaflet | Powered by Esri

Assessment of flood risk



Rivers

The river flood risk is LOW from today (Friday) until Sunday.

Rivers will rise in response to prolonged heavy rainfall from today (Friday) until Sunday, with the potential for flooding impacts. See Specific Areas of Concern Map for details.

Minor river flooding impacts are also possible but not expected in the north west and parts of the south of England from today (Friday) until Sunday.



Surface water

The surface water flood risk is LOW from today (Friday) until Sunday.

There is the potential for flooding impacts due to heavy rain falling on saturated ground from today (Friday) until Sunday. See Specific Areas of Concern Map for details.



Groundwater

The groundwater flood risk is LOW for the next five days.

Minor groundwater flooding is expected in parts of Hampshire and West Sussex for the next five days, and is possible in parts of Brighton from Sunday.

Groundwater levels are high in many other parts of the country, particularly in North Yorkshire, the East Riding of Yorkshire and Kent, as well as other parts of the south and east of England.



Coastal/Tidal

The coastal/tidal flood risk is VERY LOW for the next five days.

Flood risk matrix



Summary of potential impacts

MINIMAL

Isolated and minor flooding of low-lying land and roads
Isolated spray/wave on coastal promenades
Little or no disruption to travel, but wet road surfaces

MINOR

Localised flooding of land and roads
Flooding affecting individual properties
Disruption to travel and key sites in flood plans

SIGNIFICANT

Flooding affecting parts of communities
Possible danger to life and damage to buildings/structures
Disruption to travel and key sites in flood plans

SEVERE

Danger to life, severe disruption to travel
Widespread flooding affecting whole communities
Widespread disruption or loss of infrastructure
Large scale evacuation of properties possible

Next statement due **15:00hrs Friday 19 February 2021 (all times are local)**

Contact details **Flood Forecasting Centre Duty Hydrometeorologist - 0300 12345 01**

More information **<http://www.ffc-environment-agency.metoffice.gov.uk>**