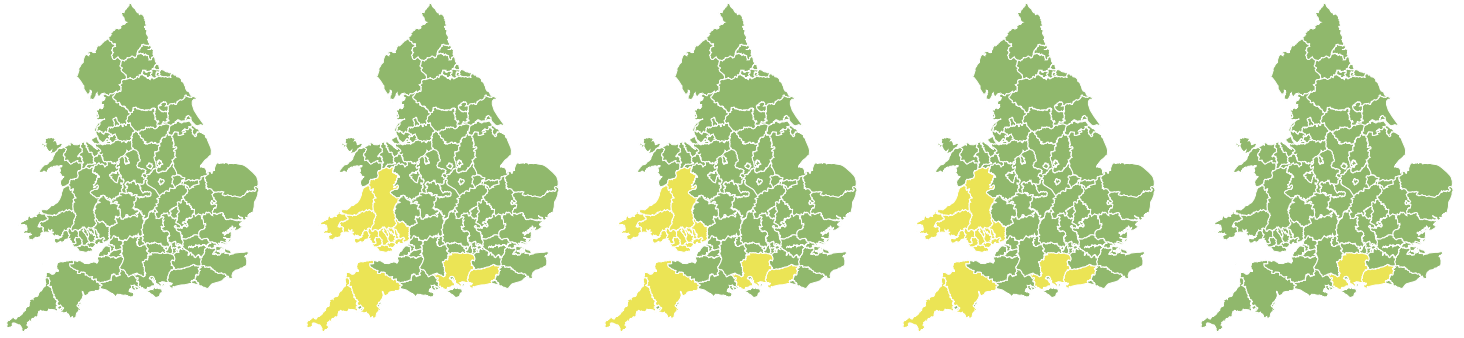


Flood Guidance Statement

10:30hrs Thursday 18 February 2021



Thursday

18 Feb 2021 10:30-23:59
Trend since last FGS

Steady



Friday

19 Feb 2021

Steady



Saturday

20 Feb 2021

Steady



Sunday

21 Feb 2021

Steady



Monday

22 Feb 2021

Increased



Minor inland flooding impacts are probable across parts of Wales and south-west England from Friday until Sunday. Minor groundwater flooding impacts are expected in parts of southern England from Friday. The overall flood risk is LOW.

Specific Areas of Concern Map 1: Friday 19 to Sunday 21 February

RISK AREA A
Impact **MINOR**
Likelihood **MEDIUM**

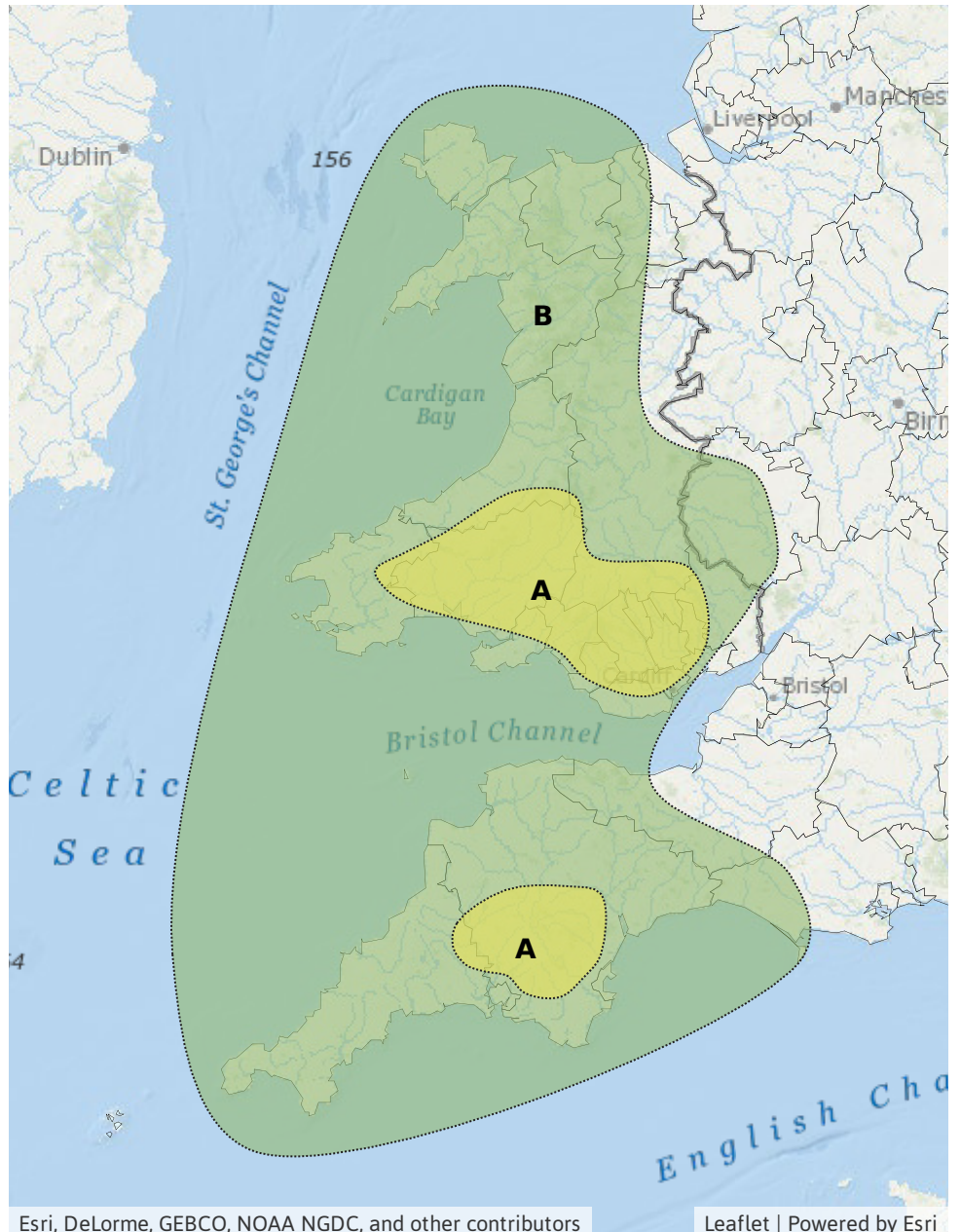
Source River Surface
Likely duration 3 Days

Prolonged heavy rain Friday continuing until Sunday falling on wet catchments.

RISK AREA B
Impact **MINOR**
Likelihood **LOW**

Source River Surface
Likely duration 3 Days

Prolonged heavy rain Friday continuing until Sunday falling on wet catchments.



Esri, DeLorme, GEBCO, NOAA NGDC, and other contributors

Leaflet | Powered by Esri

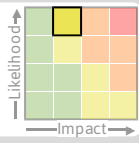
Flood Guidance Statement

10:30hrs Thursday 18 February 2021

Specific Areas of Concern Map 2: Friday 19 February onwards

RISK AREA C

Impact **MINOR**
Likelihood **HIGH**



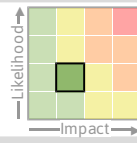
Source Ground

Likely duration 4 + Days

Localised groundwater flooding impacts affecting a few properties.

RISK AREA D

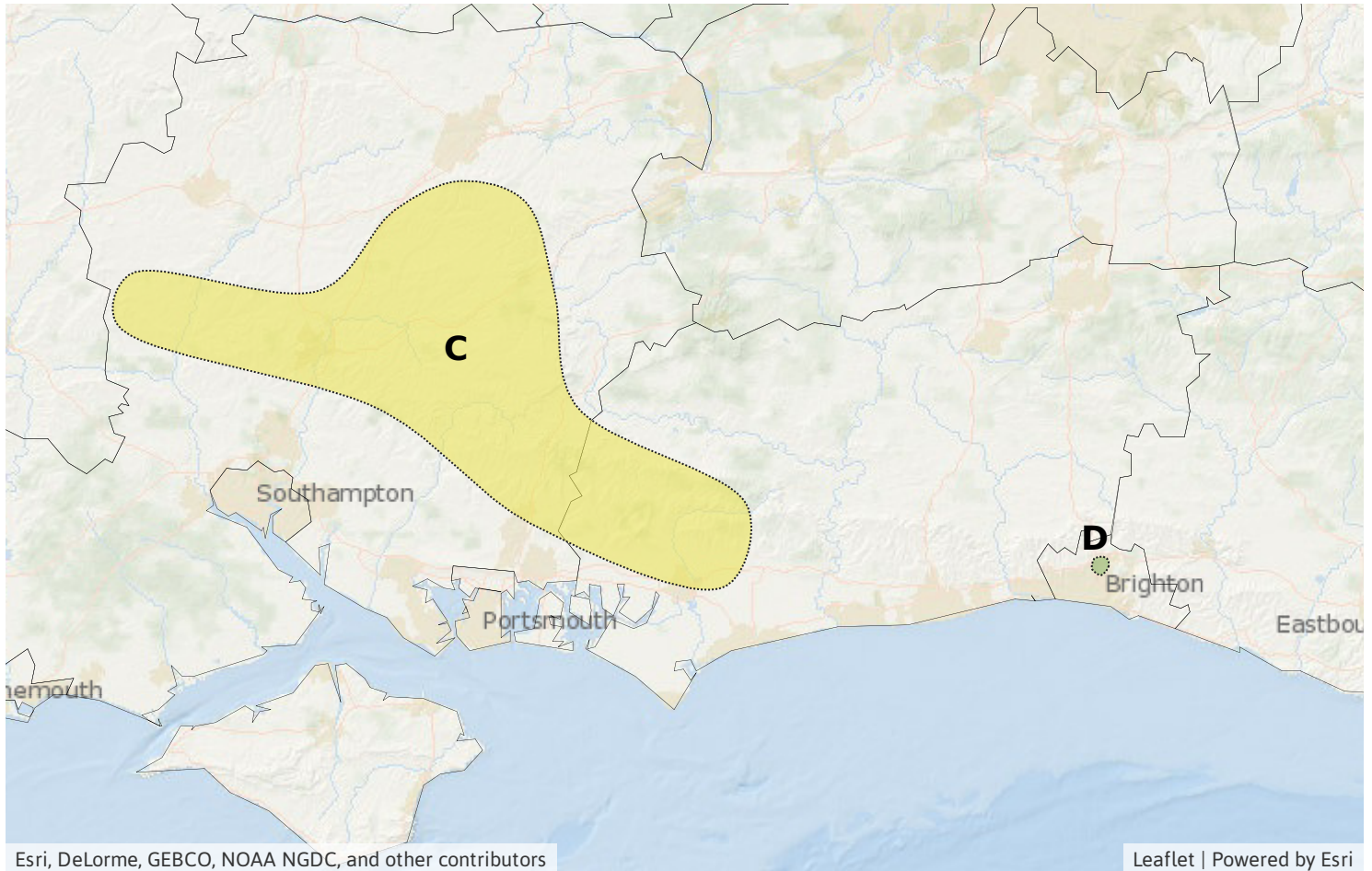
Impact **MINOR**
Likelihood **LOW**



Source Ground

Likely duration 3 + Days

Localised groundwater flooding impacts affecting a few properties from Saturday.



Assessment of flood risk



Rivers

The river flood risk is LOW from Friday until Sunday.

River catchments will become reactive to successive spells of rainfall across England and Wales with minor river flooding impacts probable in some areas from Friday.

Minor river flooding impacts are also possible but not expected in the north west and parts of the south of England from Friday.



Surface water

The surface water flood risk is LOW from Friday until Sunday.

As the ground in south Wales and south-west England becomes wetter through this week, further impacts are probable due to heavy rain from Friday until Sunday.



Groundwater

The groundwater flood risk is LOW from Friday.

Minor groundwater flooding is expected in parts of Hampshire and West Sussex from Friday and is possible in parts of Brighton from Saturday.

Groundwater levels are high in many other parts of the country, particularly in North Yorkshire, the East Riding of Yorkshire and Kent, as well as other parts of the south and east of England.



Coastal/Tidal

The coastal/tidal flood risk is VERY LOW for the next five days.

Flood Guidance Statement

10:30hrs Thursday 18 February 2021

Flood risk matrix



Summary of potential impacts

MINIMAL

Isolated and minor flooding of low-lying land and roads
Isolated spray/wave on coastal promenades
Little or no disruption to travel, but wet road surfaces

MINOR

Localised flooding of land and roads
Flooding affecting individual properties
Disruption to travel and key sites in flood plans

SIGNIFICANT

Flooding affecting parts of communities
Possible danger to life and damage to buildings/structures
Disruption to travel and key sites in flood plans

SEVERE

Danger to life, severe disruption to travel
Widespread flooding affecting whole communities
Widespread disruption or loss of infrastructure
Large scale evacuation of properties possible

Next statement due **10:30hrs Friday 19 February 2021 (all times are local)**

Contact details **Flood Forecasting Centre Duty Hydrometeorologist - 0300 12345 01**

More information **<http://www.ffc-environment-agency.metoffice.gov.uk>**