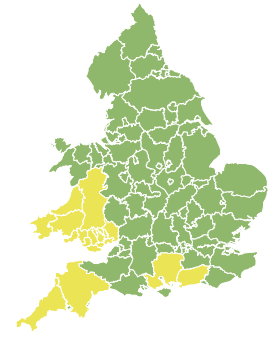
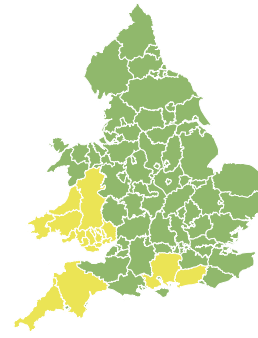
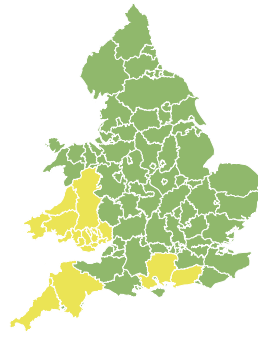


# Flood Guidance Statement

10:30hrs Wednesday 17 February 2021 - REVISION



**Wednesday**

17 Feb 2021 10:30-23:59  
Trend since last FGS

Steady



**Thursday**

18 Feb 2021

Increased



**Friday**

19 Feb 2021

Steady



**Saturday**

20 Feb 2021

Steady



**Sunday**

21 Feb 2021

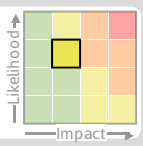
Increased



Minor inland flooding impacts are probable across parts of Wales and south-west England from Friday until Sunday. Minor groundwater flooding impacts are expected in parts of England from Friday. The overall flood risk is LOW.

## Specific Areas of Concern Map 1: Friday 19 to Sunday 21 February

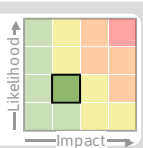
**RISK AREA A**  
Impact **MINOR**  
Likelihood **MEDIUM**



Source River Surface  
Likely duration 3 Days

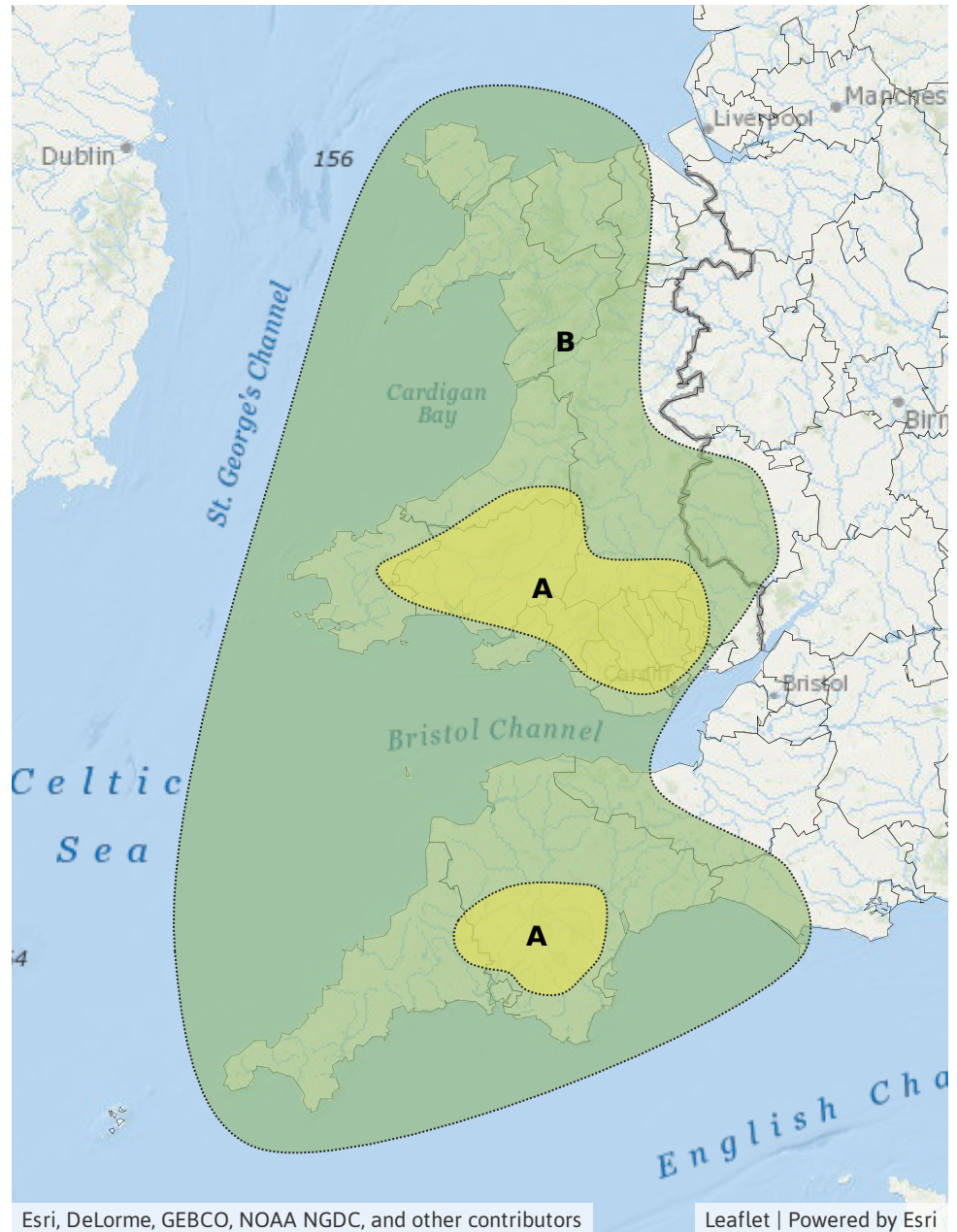
Prolonged heavy rain Friday continuing until Sunday falling on wet catchments.

**RISK AREA B**  
Impact **MINOR**  
Likelihood **LOW**



Source River Surface  
Likely duration 3 Days

Prolonged heavy rain Friday continuing until Sunday falling on wet catchments.



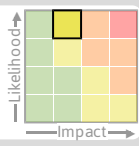
# Flood Guidance Statement

10:30hrs Wednesday 17 February 2021 - REVISION

### Specific Area of Concern Map 2: Friday 19 February onwards

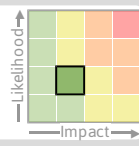
#### RISK AREA C

Impact **MINOR**  
Likelihood **HIGH**



#### RISK AREA D

Impact **MINOR**  
Likelihood **LOW**

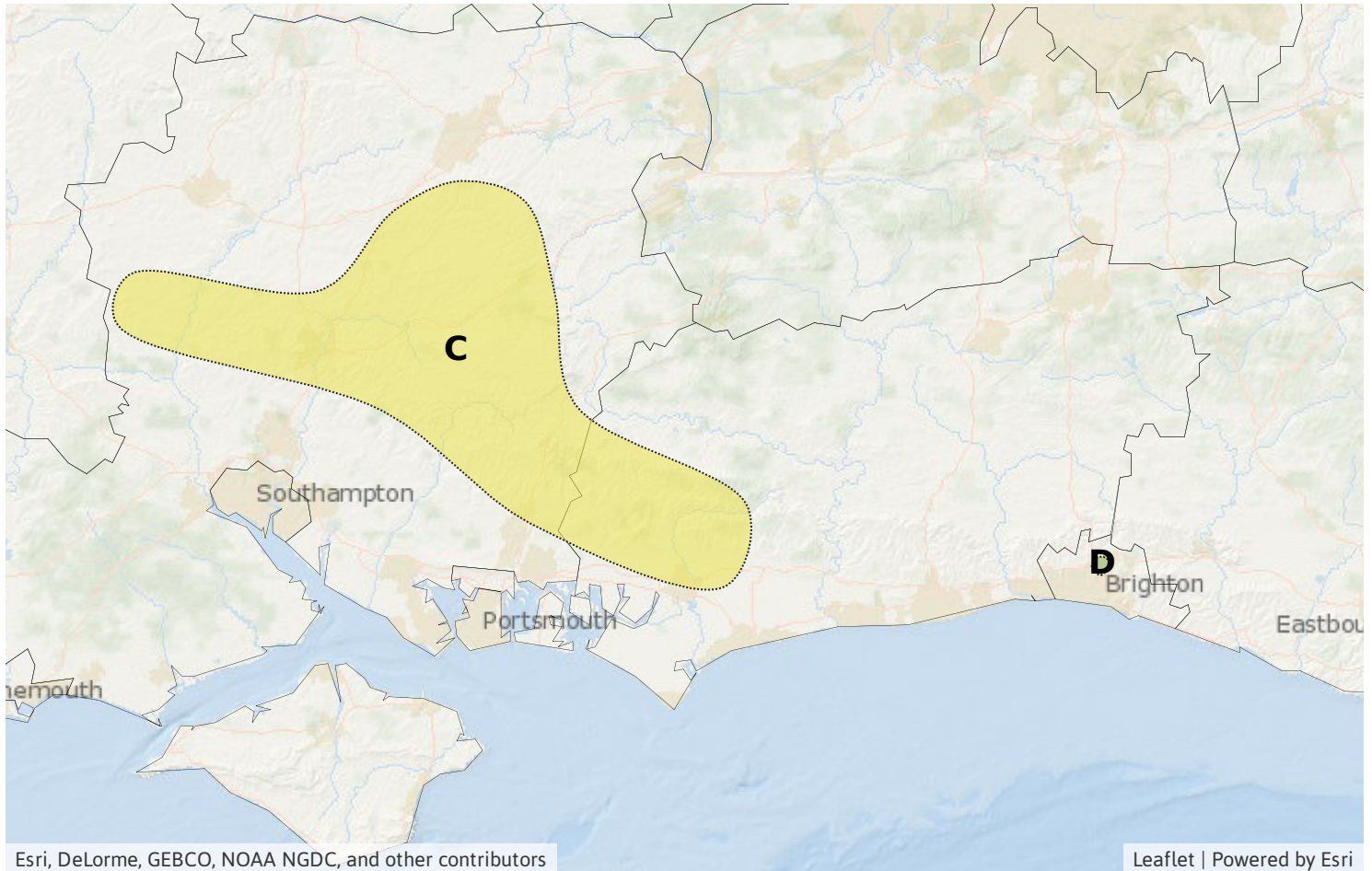


Source Ground  
Likely duration 3 + Days

Localised groundwater flooding impacts affecting a few properties.

Source Ground  
Likely duration 3 + Days

Localised groundwater flooding impacts affecting a few properties.



## Assessment of flood risk



### Rivers

---

The river flood risk is LOW from Friday until Sunday.

River catchments will become reactive to successive spells of rainfall across England and Wales with minor river flooding impacts probable in some areas by Friday. Refer to the Area of Concern Maps.

Minor river flooding impacts are also possible but not expected in the north west and parts of the south of England from Friday.



### Surface water

---

The surface water flood risk is LOW from Friday until Sunday.

Minor impacts are possible but not expected from a band of intense rain moving eastwards across parts south and central England and Wales on Thursday. As the ground becomes wetter, further impacts are probable due to further heavy rain in Wales and south-west England from Friday until Sunday.



### Groundwater

---

The groundwater flood risk is LOW from Friday.

Minor groundwater flooding is expected in parts of Hampshire and West Sussex and possible in parts of Brighton from Friday.

Groundwater levels are high in many other parts of the country, particularly in North Yorkshire, the East Riding of Yorkshire and Kent, as well as other parts of the south and east of England.



### Coastal/Tidal

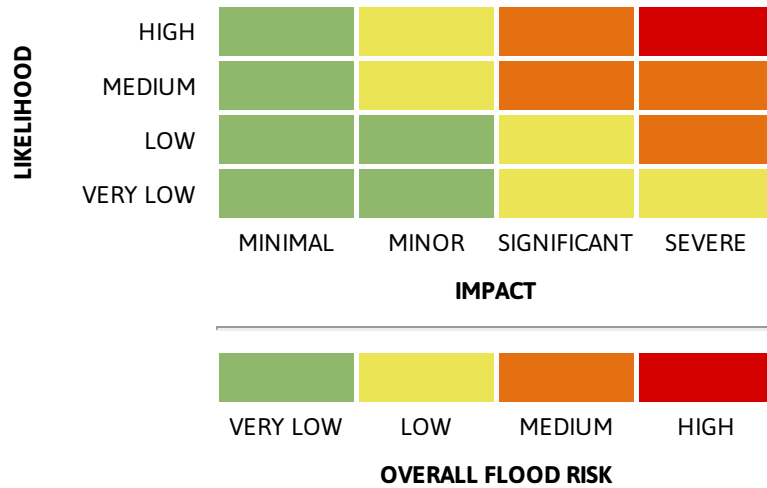
---

The coastal/tidal flood risk is VERY LOW for the next five days.

## Amendments in this update

Amendment made to correct title of Area of Concerns Map 1.

## Flood risk matrix



## Summary of potential impacts

### MINIMAL

Isolated and minor flooding of low-lying land and roads  
Isolated spray/wave on coastal promenades  
Little or no disruption to travel, but wet road surfaces

### MINOR

Localised flooding of land and roads  
Flooding affecting individual properties  
Disruption to travel and key sites in flood plans

### SIGNIFICANT

Flooding affecting parts of communities  
Possible danger to life and damage to buildings/structures  
Disruption to travel and key sites in flood plans

### SEVERE

Danger to life, severe disruption to travel  
Widespread flooding affecting whole communities  
Widespread disruption or loss of infrastructure  
Large scale evacuation of properties possible

Next statement due **10:30hrs Thursday 18 February 2021 (all times are local)**

Contact details **Flood Forecasting Centre Duty Hydrometeorologist - 0300 12345 01**

More information <http://www.ffc-environment-agency.metoffice.gov.uk>