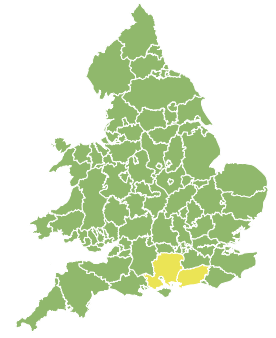


Flood Guidance Statement

10:30hrs Monday 15 February 2021



Monday

15 Feb 2021 10:30-23:59
Trend since last FGS

Decreased ↓

Tuesday

16 Feb 2021

Steady →

Wednesday

17 Feb 2021

Steady →

Thursday

18 Feb 2021

Steady →

Friday

19 Feb 2021

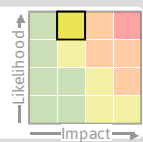
Increased ↑

Minor groundwater flooding impacts are expected in parts of the south of England from Friday. Minor inland flooding impacts are possible across parts of Wales and south-west and west of England on Friday. The overall flood risk is LOW from Friday.

Specific Area of Concern Map 1: From Friday 19 February

RISK AREA A

Impact **MINOR**
Likelihood **HIGH**

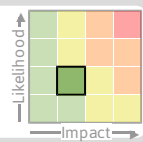


Source Ground
Likely duration 1 + Day

Localised groundwater flooding impacts affecting a few properties.

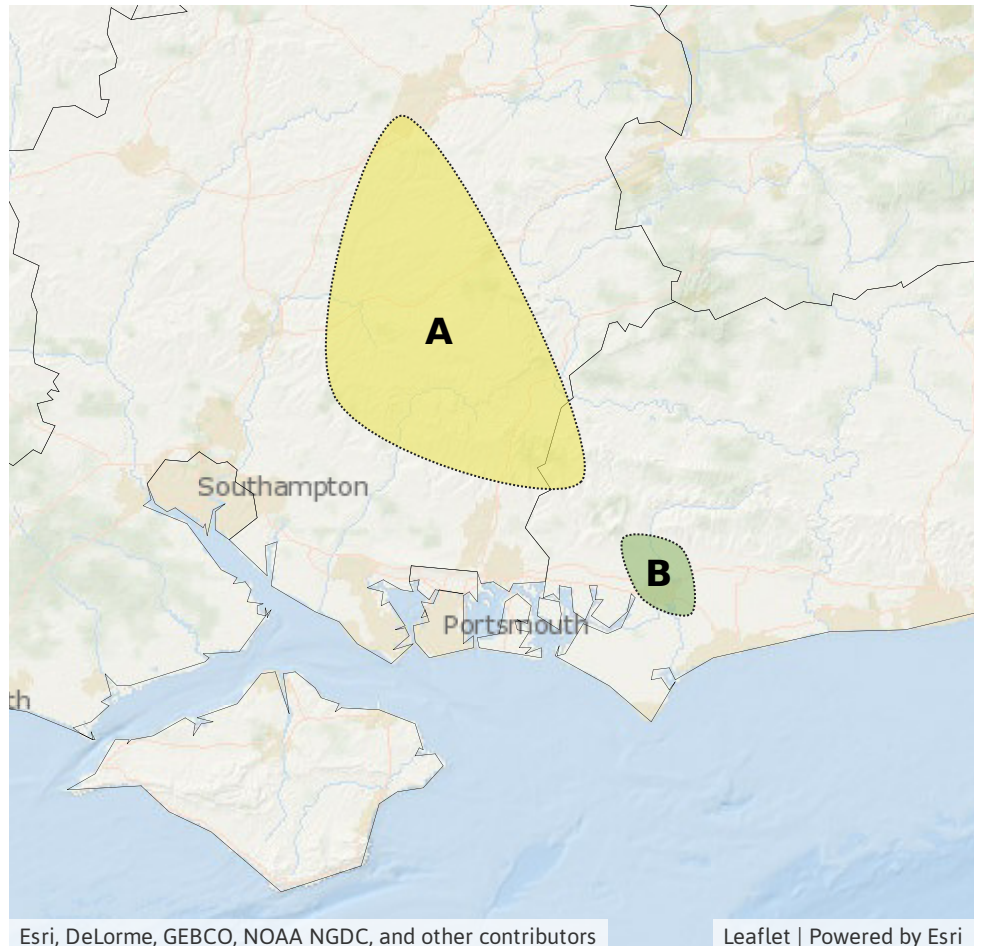
RISK AREA B

Impact **MINOR**
Likelihood **LOW**



Source Ground
Likely duration 1 + Day

Localised groundwater flooding impacts affecting a few properties.



Esri, DeLorme, GEBCO, NOAA NGDC, and other contributors

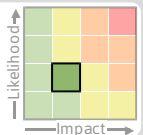
Leaflet | Powered by Esri

Flood Guidance Statement

10:30hrs Monday 15 February 2021

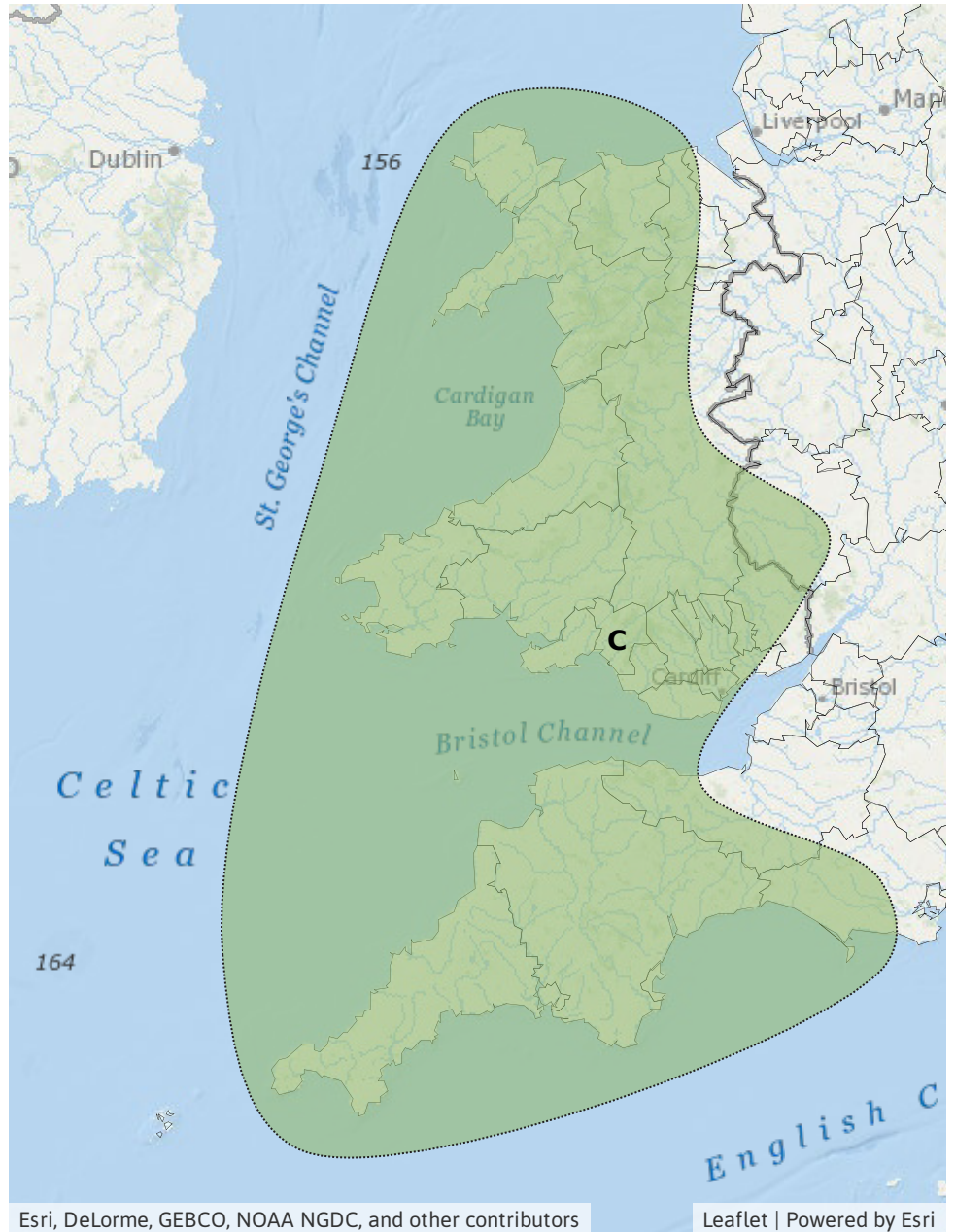
Specific Areas of Concern Map 2: Friday 19 February

RISK AREA C
Impact **MINOR**
Likelihood **LOW**



Source River Surface
Likely duration 1 + Day

Heavy rain for much of Friday falling on wet catchments



Assessment of flood risk



Groundwater

The groundwater flood risk is LOW from Friday.

Minor groundwater flooding is expected in parts of Hampshire and West Sussex and possible in parts of East Sussex from Friday. See Specific Areas of Concern Map 1.

Groundwater levels are high in many other parts of the country, particularly in North Yorkshire, the East Riding of Yorkshire and Kent, as well as other parts of the south and east of England.



Rivers

The river flood risk is VERY LOW for the next five days.

Rivers remain high across parts of the east of England on Monday and Tuesday and minor impacts are possible but not expected.

River levels are expected to rise on Friday across parts of Wales and south-west and west of England in response to further rain falling on wet catchments. This may lead to flood impacts. See Specific Areas of Concern Map 2.



Surface water

The surface water flood risk is VERY LOW for the next five days.

Minor surface water flooding impacts are possible across parts of Wales and the south-west and west of England during Friday due to further heavy rain. See Specific Areas of Concern Map 2.



Coastal/Tidal

The coastal/tidal flood risk is VERY LOW for the next five days.

Flood Guidance Statement

10:30hrs Monday 15 February 2021

Flood risk matrix



Summary of potential impacts

MINIMAL

Isolated and minor flooding of low-lying land and roads
Isolated spray/wave on coastal promenades
Little or no disruption to travel, but wet road surfaces

MINOR

Localised flooding of land and roads
Flooding affecting individual properties
Disruption to travel and key sites in flood plans

SIGNIFICANT

Flooding affecting parts of communities
Possible danger to life and damage to buildings/structures
Disruption to travel and key sites in flood plans

SEVERE

Danger to life, severe disruption to travel
Widespread flooding affecting whole communities
Widespread disruption or loss of infrastructure
Large scale evacuation of properties possible

Next statement due **10:30hrs Tuesday 16 February 2021 (all times are local)**

Contact details **Flood Forecasting Centre Duty Hydrometeorologist - 0300 12345 01**

More information <http://www.ffc-environment-agency.metoffice.gov.uk>