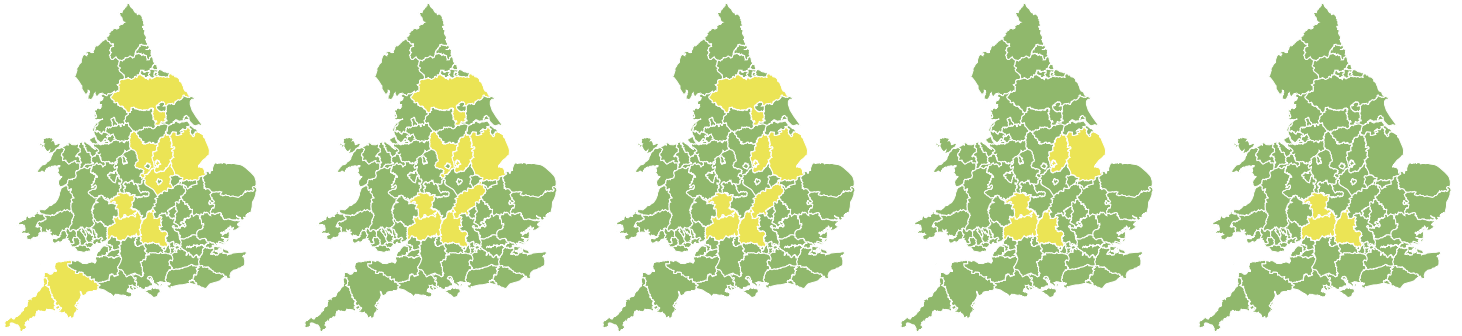


Flood Guidance Statement

10:30hrs Saturday 30 January 2021



Saturday

30 Jan 2021 10:30-23:59
Trend since last FGS

Steady



Sunday

31 Jan 2021

Steady



Monday

1 Feb 2021

Steady



Tuesday

2 Feb 2021

Increased



Wednesday

3 Feb 2021

Increased

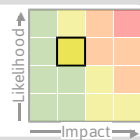


Minor inland flooding impacts are probable in parts of south-west England on Saturday. Ongoing river flooding impacts are probable along rivers across England over the next five days. The overall flood risk is LOW.

Specific Areas of Concern Map 1: Saturday 30 January to Wednesday 3rd February

RISK AREA A

Impact **MINOR**
Likelihood **MEDIUM**

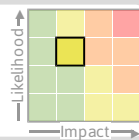


Source River
Likely duration 2 Days

Minor impacts probable on the River Nene from early Sunday.

RISK AREA C

Impact **MINOR**
Likelihood **MEDIUM**

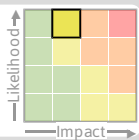


Source River
Likely duration 5 + Days

Impacts on the River Severn and Thames until Wednesday.

RISK AREA D

Impact **MINOR**
Likelihood **HIGH**

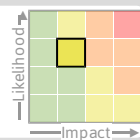


Source Ground
Likely duration 3 Days

Minor groundwater flooding ongoing in Malton, Norton & Old Malton until Monday.

RISK AREA E

Impact **MINOR**
Likelihood **MEDIUM**

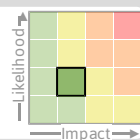


Source River
Likely duration 4 Days

Ongoing moving down stream until Monday.

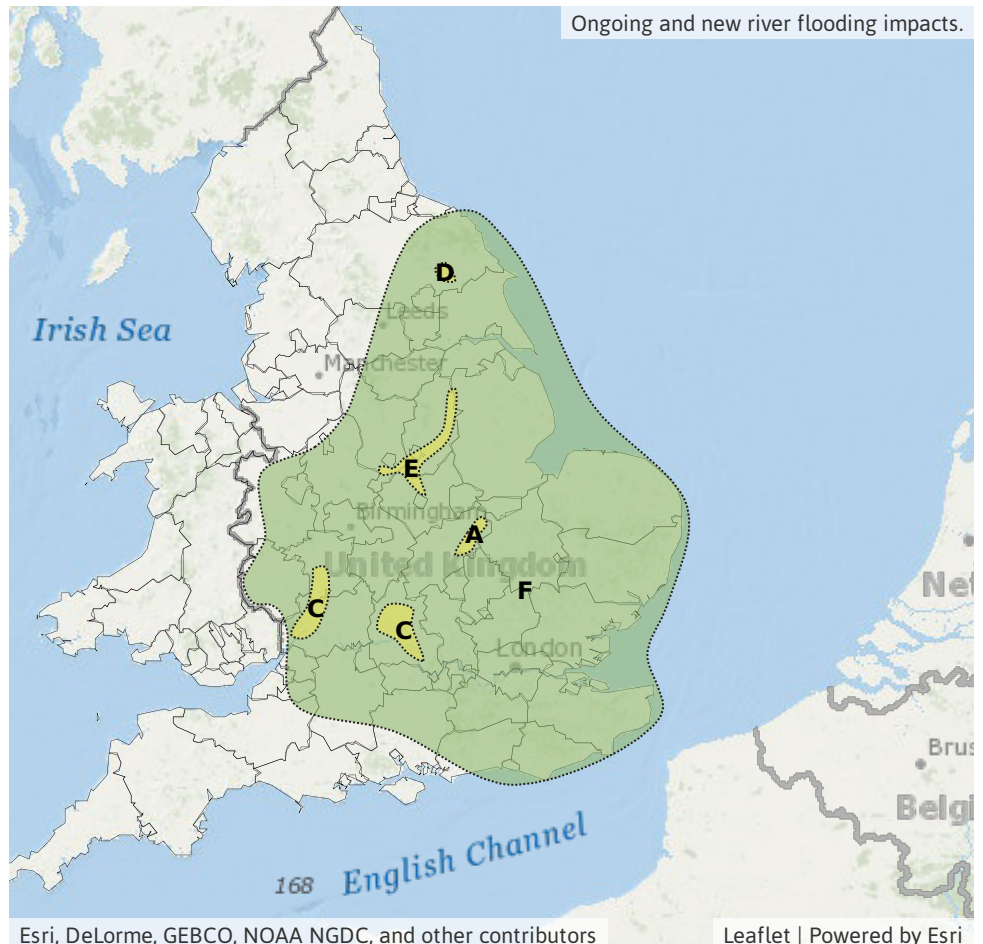
RISK AREA F

Impact **MINOR**
Likelihood **LOW**



Source River
Likely duration 2 Days

Ongoing minor river flooding today and Sunday following recent heavy rain.

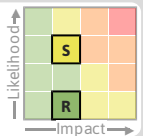


Flood Guidance Statement

10:30hrs Saturday 30 January 2021

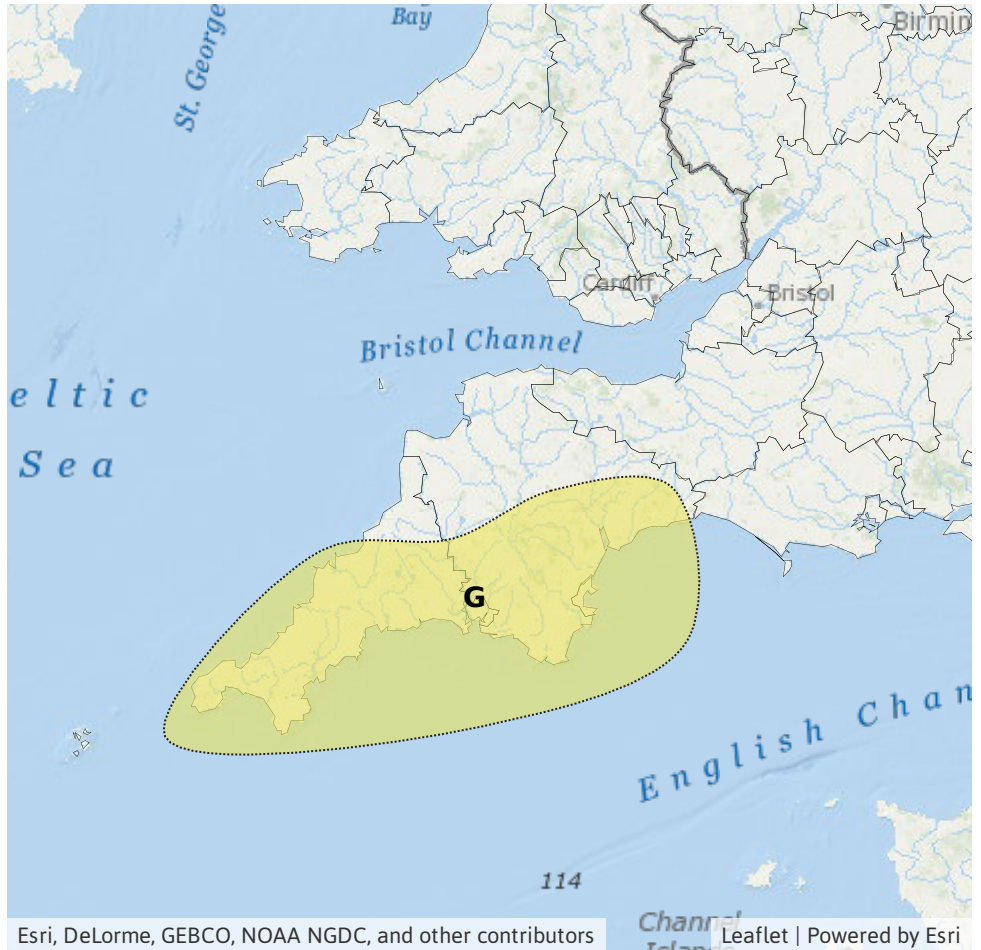
Specific Areas of Concern Map 2: Saturday 30 January

RISK AREA G
Impact **MINOR**
Likelihood **MEDIUM**



Source River Surface
Likely duration 1 Day

Heavy rain falling on to saturated ground through Saturday.



Assessment of flood risk



Rivers

The river flood risk is LOW.

River levels remain high in many areas after recent rainfall, with some rivers continuing to rise in some areas leading to the likelihood of minor impacts along some rivers during the next five days. Rainfall today increases the potential for impacts in some areas.

Minor river flooding impacts are also possible but not expected on Tuesday and Wednesday across parts of England and Wales.



Surface water

The surface water flood risk is LOW on Saturday.

Heavy rain continuing across south-west England on Saturday could lead to some minor surface water flooding impacts, especially in parts of Devon and Cornwall. This is due to rain falling on saturated ground.

Minor surface water flooding impacts are also possible but not expected on Tuesday and Wednesday across parts of England and Wales.



Groundwater

The groundwater flood risk is LOW until Monday.

Minor groundwater flooding is ongoing in North Yorkshire in the Malton, Norton and Old Malton area. This is being displayed on the Flood Guidance Statement until Monday, thereafter minor flooding is expected to continue but the situation is known and being managed.

Groundwater levels are also high elsewhere, particularly in parts of the south and east of England.



Coastal/Tidal

The coastal/tidal flood risk is VERY LOW for the next five days.

This is despite spring tides reaching their peak levels on Sunday/Monday and the potential for gales and large waves affecting parts of south Wales and the south of England at times from today.

Flood Guidance Statement

10:30hrs Saturday 30 January 2021

Flood risk matrix



Summary of potential impacts

MINIMAL

Isolated and minor flooding of low-lying land and roads
Isolated spray/wave on coastal promenades
Little or no disruption to travel, but wet road surfaces

MINOR

Localised flooding of land and roads
Flooding affecting individual properties
Disruption to travel and key sites in flood plans

SIGNIFICANT

Flooding affecting parts of communities
Possible danger to life and damage to buildings/structures
Disruption to travel and key sites in flood plans

SEVERE

Danger to life, severe disruption to travel
Widespread flooding affecting whole communities
Widespread disruption or loss of infrastructure
Large scale evacuation of properties possible

Next statement due **10:30hrs Sunday 31 January 2021 (all times are local)**

Contact details **Flood Forecasting Centre Duty Hydrometeorologist - 0300 12345 01**

More information <http://www.ffc-environment-agency.metoffice.gov.uk>