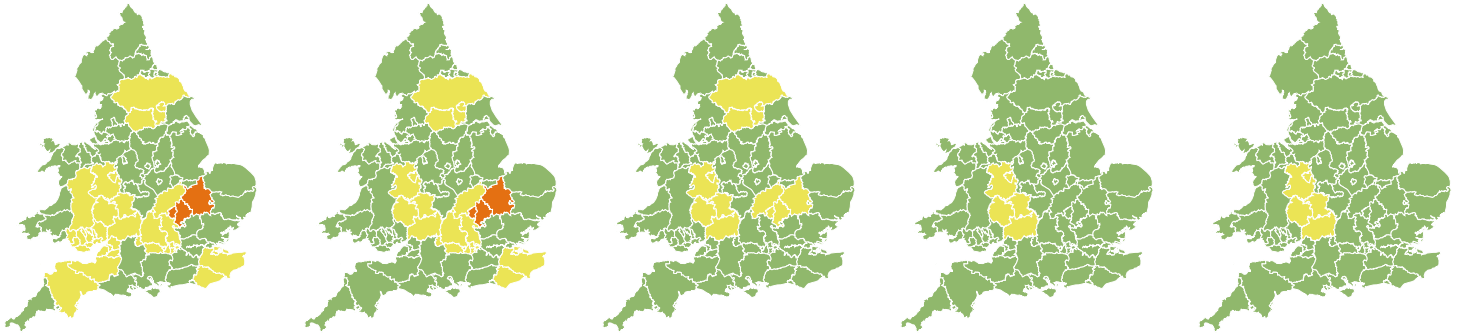


Flood Guidance Statement

15:00hrs Sunday 27 December 2020



Sunday

27 Dec 2020 15:00-23:59
Trend since last FGS

Steady →

Monday

28 Dec 2020

Steady →

Tuesday

29 Dec 2020

Steady →

Wednesday

30 Dec 2020

Steady →

Thursday

31 Dec 2020

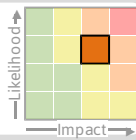
Steady →

Ongoing significant river flooding impacts are probable in parts of central and east England until Monday. Ongoing minor river flooding impacts are probable in Wales today and parts of England until Thursday. The overall flood risk is MEDIUM.

Specific Areas of Concern Map 1: Sunday 27 December 2020

RISK AREA A

Impact **SIGNIFICANT**
Likelihood **MEDIUM**

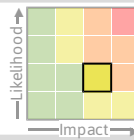


Source River
Likely duration 2 Days

Ongoing significant river flood impacts probable until Monday.

RISK AREA B

Impact **SIGNIFICANT**
Likelihood **LOW**

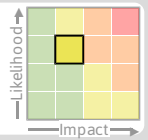


Source River
Likely duration 2 Days

Ongoing significant impacts possible until Monday, becoming minor on Tuesday.

RISK AREA C

Impact **MINOR**
Likelihood **MEDIUM**

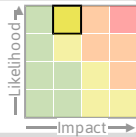


Source River
Likely duration 1 Day

Ongoing minor flood impacts.

RISK AREA D

Impact **MINOR**
Likelihood **HIGH**

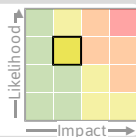


Source River
Likely duration 2 Days

Ongoing minor flood impacts along the upper Thames and tributaries until Monday.

RISK AREA E

Impact **MINOR**
Likelihood **MEDIUM**

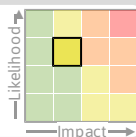


Source River
Likely duration 3 Days

Minor river flooding impacts until Tuesday.

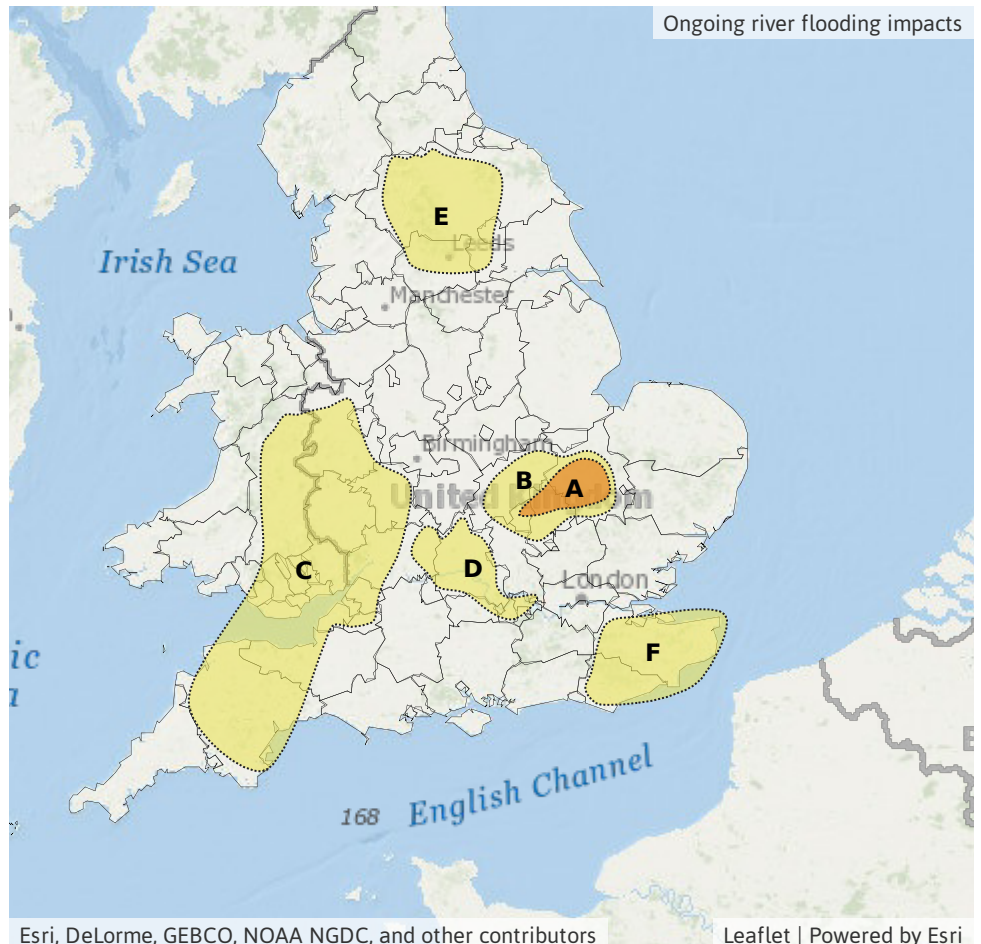
RISK AREA F

Impact **MINOR**
Likelihood **MEDIUM**



Source River
Likely duration 2 Days

Potential river flooding on Sunday and Monday in East Sussex and Kent



Esri, DeLorme, GEBCO, NOAA NGDC, and other contributors

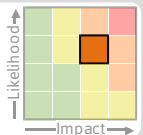
Leaflet | Powered by Esri

Flood Guidance Statement

15:00hrs Sunday 27 December 2020

Specific Areas of Concern Map 2: Monday 28 to Thursday 31 December 2020

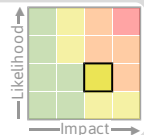
RISK AREA A
Impact **SIGNIFICANT**
Likelihood **MEDIUM**



Source River
Likely duration 2 Days

Ongoing significant river flood impacts probable until Monday.

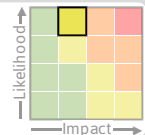
RISK AREA B
Impact **SIGNIFICANT**
Likelihood **LOW**



Source River
Likely duration 2 Days

Ongoing significant impacts possible until Monday, becoming minor on Tuesday.

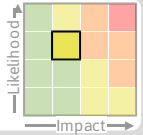
RISK AREA D
Impact **MINOR**
Likelihood **HIGH**



Source River
Likely duration 2 Days

Ongoing minor flood impacts along the upper Thames and tributaries until Monday.

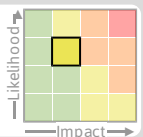
RISK AREA E
Impact **MINOR**
Likelihood **MEDIUM**



Source River
Likely duration 3 Days

Minor river flooding impacts until Tuesday.

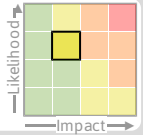
RISK AREA F
Impact **MINOR**
Likelihood **MEDIUM**



Source River
Likely duration 2 Days

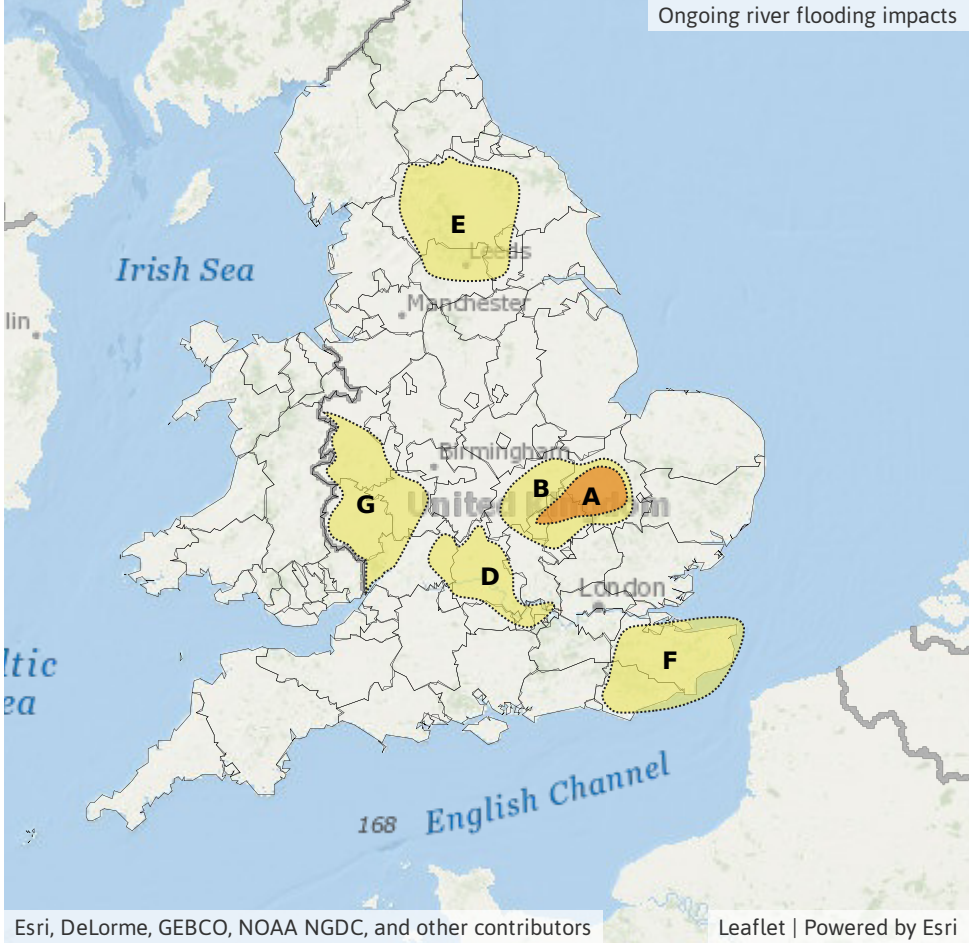
Potential river flooding on Sunday and Monday in East Sussex and Kent

RISK AREA G
Impact **MINOR**
Likelihood **MEDIUM**



Source River
Likely duration 4 + Days

Ongoing minor river flooding impacts for Rivers Severn, Wye and Teme.



Assessment of flood risk



Rivers

The river flood risk is MEDIUM today (Sunday) and tomorrow (Monday) then LOW from Tuesday to Thursday.

Ongoing significant river flooding impacts are probable in parts of central and east England until Monday. There are also ongoing minor river flooding impacts along the Upper Thames and tributaries until Monday, and the Rivers Severn, Wye, and Teme through next week.

New minor river flooding impacts are probable in parts of Wales and southwest England today (Sunday), in East Sussex and Kent today and tomorrow, and in parts of northern England from today until Tuesday. This is due to heavy rain from Storm Bella having fallen onto already wet catchments.



Surface water

The surface water flood risk is VERY LOW for the next five days.



Coastal/Tidal

The coastal/tidal flood risk is VERY LOW for the next five days despite the potential for strong winds and large waves at times.



Groundwater

The groundwater flood risk is VERY LOW for the next five days.

This is despite groundwater levels continuing to rise in many places, particularly in parts of the south-west of England.

Flood risk matrix



Summary of potential impacts

MINIMAL

Isolated and minor flooding of low-lying land and roads
Isolated spray/wave on coastal promenades
Little or no disruption to travel, but wet road surfaces

MINOR

Localised flooding of land and roads
Flooding affecting individual properties
Disruption to travel and key sites in flood plans

SIGNIFICANT

Flooding affecting parts of communities
Possible danger to life and damage to buildings/structures
Disruption to travel and key sites in flood plans

SEVERE

Danger to life, severe disruption to travel
Widespread flooding affecting whole communities
Widespread disruption or loss of infrastructure
Large scale evacuation of properties possible

Next statement due **10:30hrs Monday 28 December 2020 (all times are local)**

Contact details **Flood Forecasting Centre Duty Hydrometeorologist - 0300 12345 01**

More information **<http://www.ffc-environment-agency.metoffice.gov.uk>**