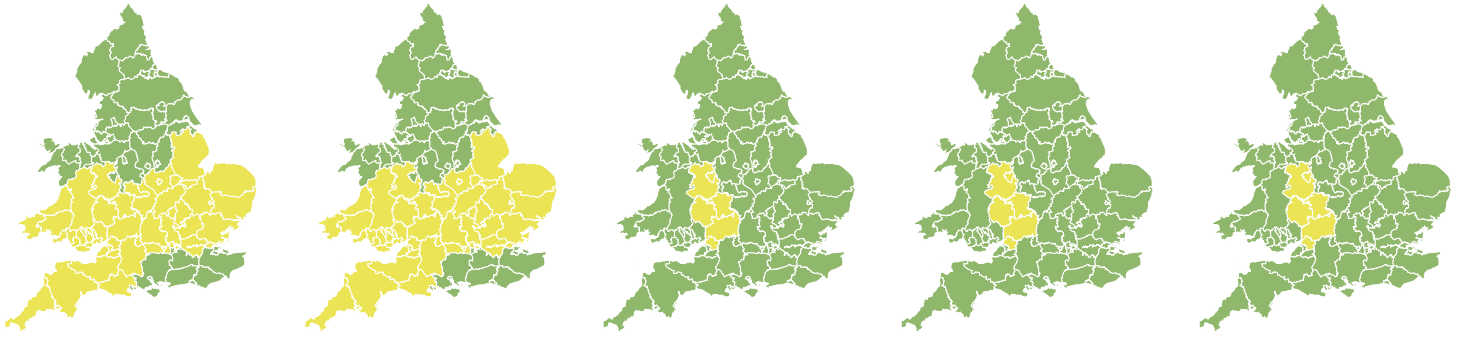


Flood Guidance Statement

10:30hrs Wednesday 23 December 2020



Wednesday

23 Dec 2020 10:30-23:59
Trend since last FGS

Decreased ↓

Thursday

24 Dec 2020

Decreased ↓

Friday

25 Dec 2020

Steady →

Saturday

26 Dec 2020

Increased ↑

Sunday

27 Dec 2020

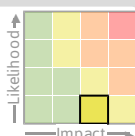
Increased ↑

Significant inland flooding impacts are possible but not expected across south Wales, the south of England, parts of the Midlands, Lincolnshire and East Anglia today (Wednesday) continuing for rivers into Thursday. The overall flood risk is LOW.

Specific Area of Concern Map 1: Wednesday 23 and Thursday 24 December 2020

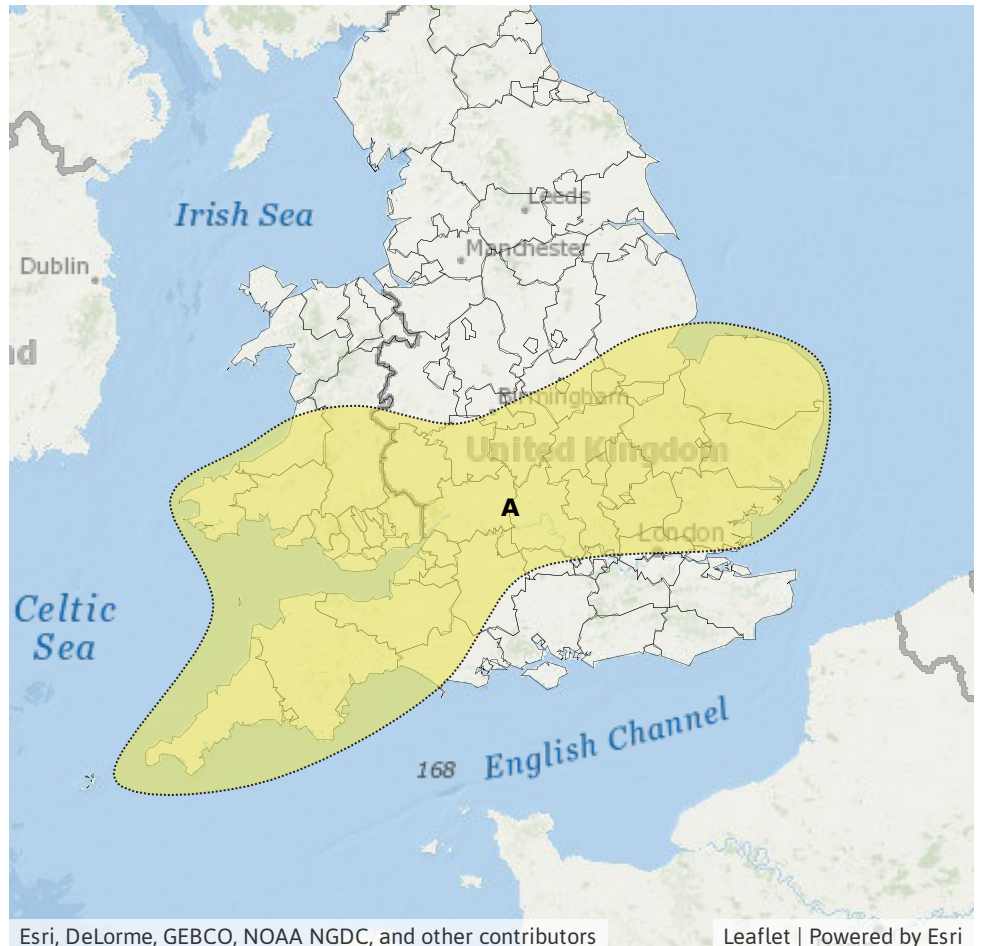
RISK AREA A

Impact **SIGNIFICANT**
Likelihood **VERY LOW**



Source River Surface
Likely duration 2 Days

Heavy and persistent rain today (Wed).
River flooding only on Thu.

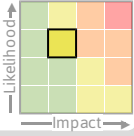


Flood Guidance Statement

10:30hrs Wednesday 23 December 2020

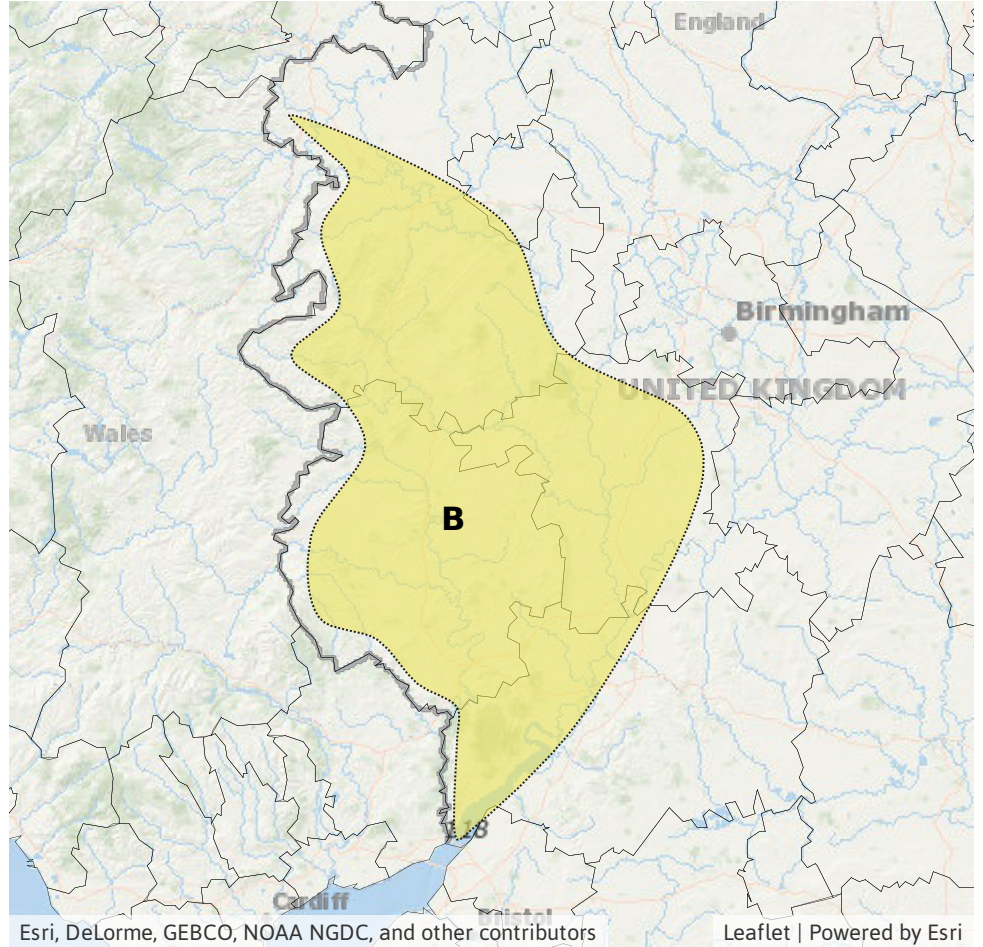
Specific Area of Concern Map 2: Friday 25 to Sunday 27 December 2020

RISK AREA B
Impact **MINOR**
Likelihood **MEDIUM**



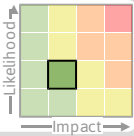
Source River
Likely duration 3 + Days

Further flood impacts along the River Severn, Wye and Teme.



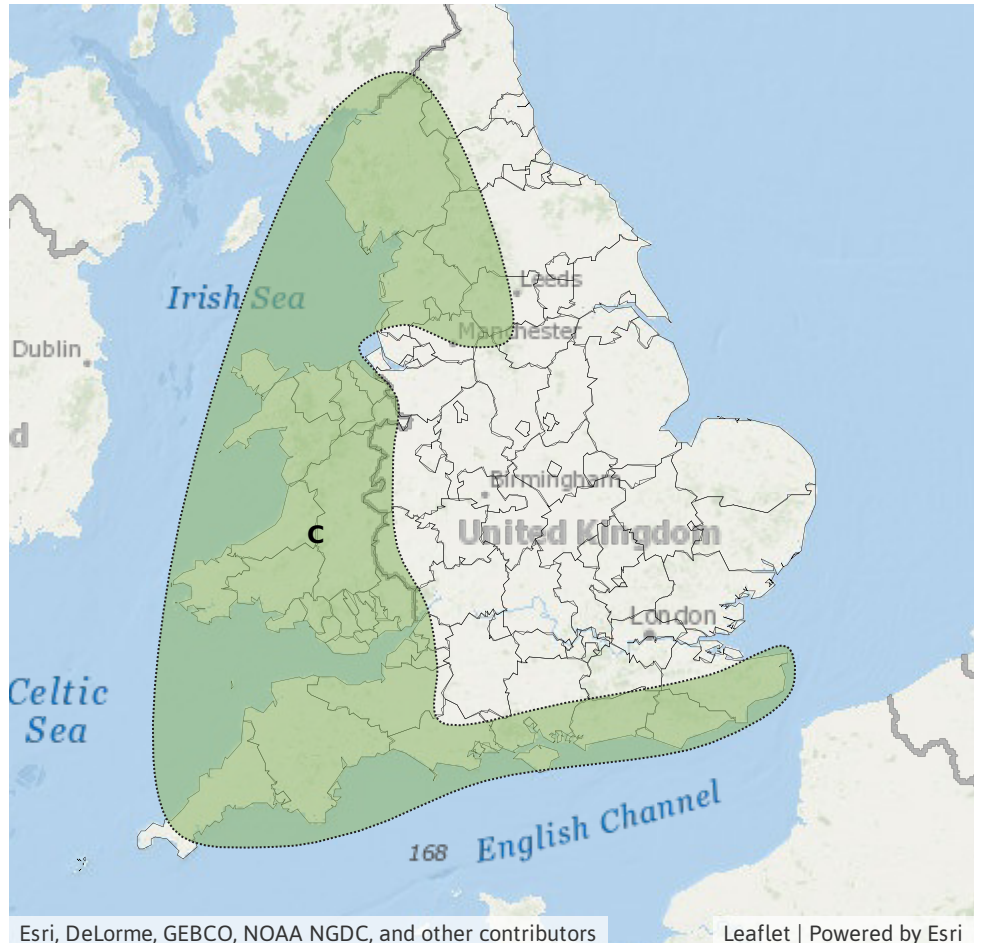
Specific Area of Concern Map 3: Saturday 26 and Sunday 27 December 2020

RISK AREA C
Impact **MINOR**
Likelihood **LOW**



Source River Surface
Likely duration 2 Days

Minor inland flooding impacts possible Sat & Sun from further heavy rain.



Assessment of flood risk



Rivers

The river flood risk is LOW for the next five days.

Significant river flooding impacts are possible but not expected in south Wales, the south of England, parts of the Midlands, Lincolnshire and East Anglia today (Wednesday) and Thursday. This is due to heavy and persistent rain today (Wednesday) falling onto wet or saturated catchments.

Ongoing minor river flooding impacts are then probable along the Rivers Severn, Wye and Teme from Friday onwards.

Minor river flooding impacts are also possible on Saturday and Sunday across parts of Wales, the north, south-west and south-east of England. This is due to a band of heavy and persistent rain.



Surface water

The surface water flood risk is LOW today (Wednesday).

Significant surface water flooding impacts are possible but not expected in south Wales, the south of England, parts of the Midlands, Lincolnshire and East Anglia today (Wednesday). This is due to heavy and persistent rainfall easing soon after midnight.

Minor surface water flooding impacts are also possible on Saturday and Sunday across parts of Wales, the north, south-west and south-east of England. This is due to a band of heavy and persistent rain.



Coastal/Tidal

The coastal/tidal flood risk is VERY LOW for the next five days.

Minor coastal flooding impacts are possible but not expected on Sunday for exposed parts of the English Channel coast due to severe gales and large waves.



Groundwater

The groundwater flood risk is VERY LOW for the next five days.

Flood risk matrix



Summary of potential impacts

MINIMAL

Isolated and minor flooding of low-lying land and roads
Isolated spray/wave on coastal promenades
Little or no disruption to travel, but wet road surfaces

MINOR

Localised flooding of land and roads
Flooding affecting individual properties
Disruption to travel and key sites in flood plans

SIGNIFICANT

Flooding affecting parts of communities
Possible danger to life and damage to buildings/structures
Disruption to travel and key sites in flood plans

SEVERE

Danger to life, severe disruption to travel
Widespread flooding affecting whole communities
Widespread disruption or loss of infrastructure
Large scale evacuation of properties possible

Next statement due **10:30hrs Thursday 24 December 2020 (all times are local)**

Contact details **Flood Forecasting Centre Duty Hydrometeorologist - 0300 12345 01**

More information <http://www.ffc-environment-agency.metoffice.gov.uk>