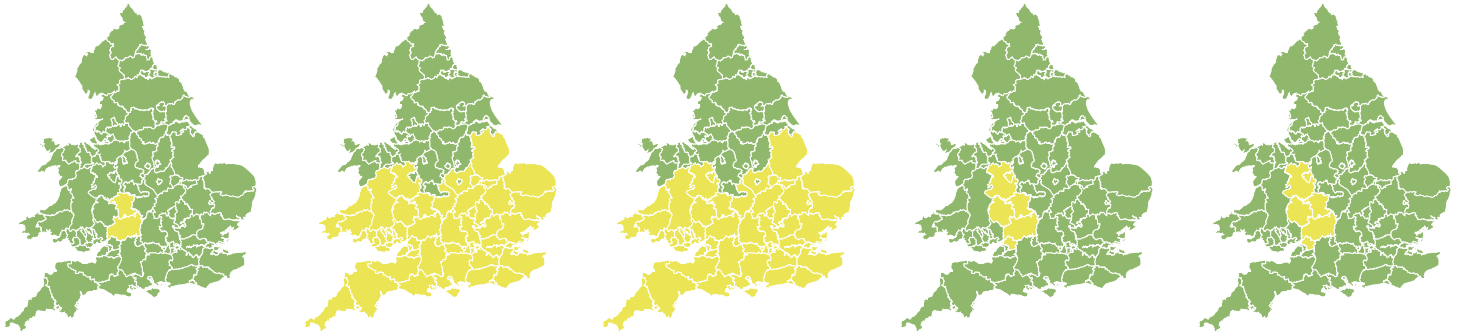


# Flood Guidance Statement

10:30hrs Tuesday 22 December 2020



Tuesday

22 Dec 2020 10:30-23:59  
Trend since last FGS

Steady →

Wednesday

23 Dec 2020

Increased ↑

Thursday

24 Dec 2020

Increased ↑

Friday

25 Dec 2020

Increased ↑

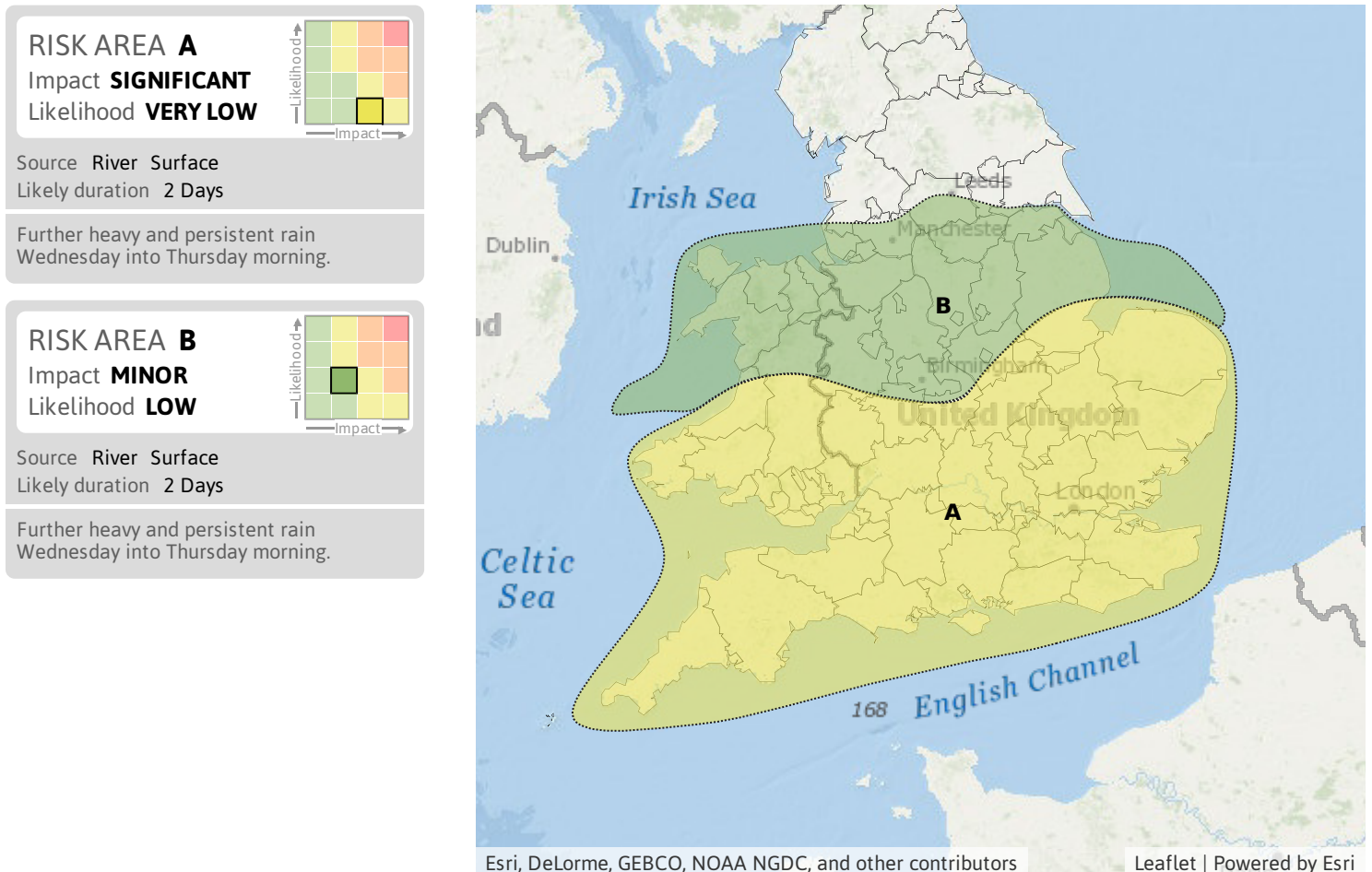
Saturday

26 Dec 2020

Increased ↑

Significant inland flooding impacts are possible but not expected across south Wales, the south of England, parts of the Midlands, Lincolnshire and East Anglia on Wednesday and Thursday. The overall flood risk is LOW.

## Specific Area of Concern Map 1: Wednesday 23 and Thursday 24 December 2020

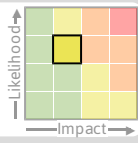


# Flood Guidance Statement

10:30hrs Tuesday 22 December 2020

### Specific Area of Concern Map 2: Tuesday 22 to Saturday 26 December 2020

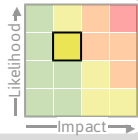
**RISK AREA C**  
Impact **MINOR**  
Likelihood **MEDIUM**



Source River  
Likely duration 2 Days

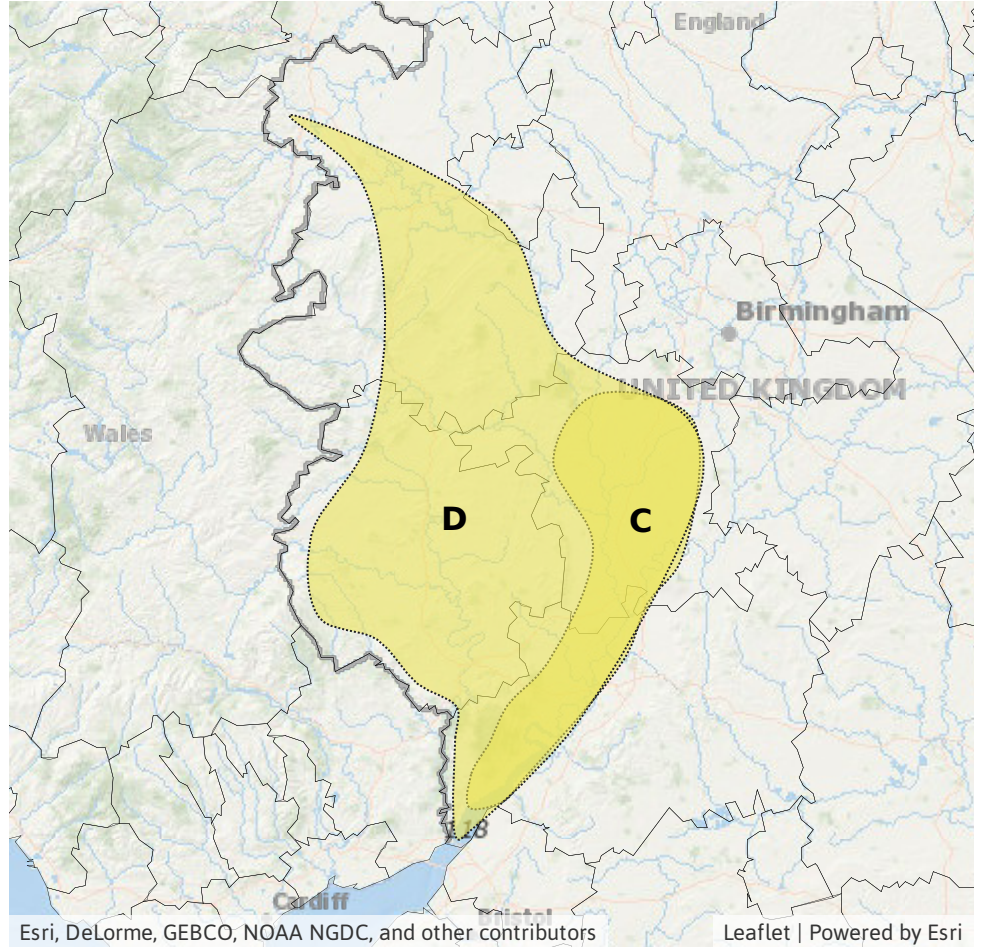
Ongoing flooding impacts on River Severn

**RISK AREA D**  
Impact **MINOR**  
Likelihood **MEDIUM**



Source River  
Likely duration 3 + Days

Further flood impacts along the River Severn, Wye and Teme.



## Assessment of flood risk



### Rivers

---

The river flood risk is LOW for the next five days.

Significant river flooding impacts are possible but not expected in south Wales, the south of England, parts of the Midlands, Lincolnshire and East Anglia on Wednesday and Thursday. Minor river flooding impacts are also possible more widely across Wales, the Midlands, East Anglia and southern parts of the north of England. This is due to heavy and persistent rainfall falling onto wet or saturated catchments.

Ongoing minor river flooding impacts are probable along the River Severn for the next five days, and from Thursday along the Wye and Teme.



### Surface water

---

The surface water flood risk is LOW on Wednesday and Thursday.

Significant surface water flooding impacts are possible but not expected in south Wales, the south of England, parts of the Midlands, Lincolnshire and East Anglia on Wednesday into Thursday morning. Minor surface water flooding impacts are also possible more widely across Wales, the Midlands, East Anglia and southern parts of the north of England. This is due to heavy and persistent rainfall.



### Coastal/Tidal

---

The coastal/tidal flood risk is VERY LOW for the next five days.



### Groundwater

---

The groundwater flood risk is VERY LOW for the next five days.

### Flood risk matrix



### Summary of potential impacts

#### MINIMAL

Isolated and minor flooding of low-lying land and roads  
Isolated spray/wave on coastal promenades  
Little or no disruption to travel, but wet road surfaces

#### MINOR

Localised flooding of land and roads  
Flooding affecting individual properties  
Disruption to travel and key sites in flood plans

#### SIGNIFICANT

Flooding affecting parts of communities  
Possible danger to life and damage to buildings/structures  
Disruption to travel and key sites in flood plans

#### SEVERE

Danger to life, severe disruption to travel  
Widespread flooding affecting whole communities  
Widespread disruption or loss of infrastructure  
Large scale evacuation of properties possible

Next statement due **10:30hrs Wednesday 23 December 2020 (all times are local)**

Contact details **Flood Forecasting Centre Duty Hydrometeorologist - 0300 12345 01**

More information <http://www.ffc-environment-agency.metoffice.gov.uk>