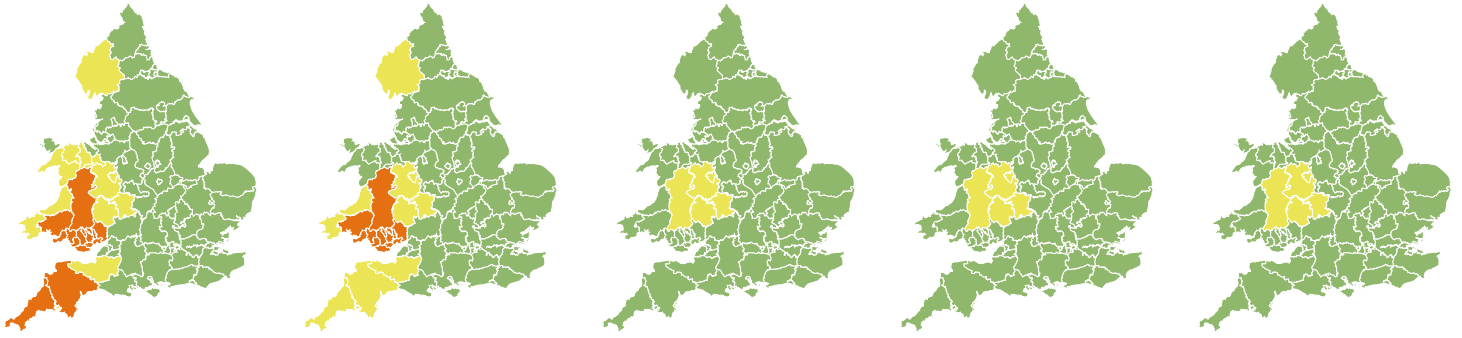


Flood Guidance Statement

15:00hrs Friday 18 December 2020



Friday 18 Dec 2020 15:00-23:59 Trend since last FGS Steady →	Saturday 19 Dec 2020 Steady →	Sunday 20 Dec 2020 Steady →	Monday 21 Dec 2020 Steady →	Tuesday 22 Dec 2020 Steady →
-------------------------------------------------------------------------------------	---------------------------------------------------	-------------------------------------------------	-------------------------------------------------	--------------------------------------------------

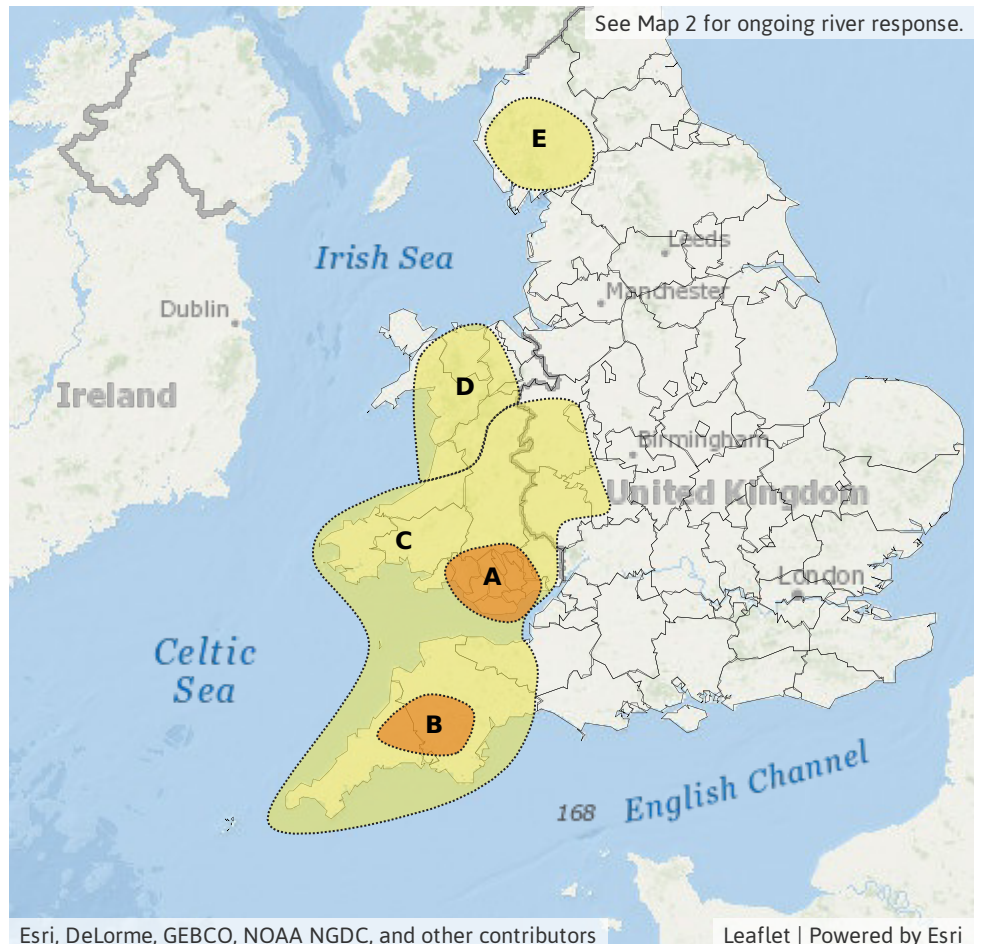
Significant inland flooding impacts are probable today (Friday) and Saturday in South Wales and today in south-west England. The overall flood risk is **MEDIUM**.

Specific Area of Concern Map 1: Friday 18 and Saturday 19 December

RISK AREA A Impact SIGNIFICANT Likelihood MEDIUM Source River Surface Likely duration 2 Days Inland flooding impacts probable Fri & Sat. River impacts only on Sat.	RISK AREA B Impact SIGNIFICANT Likelihood MEDIUM Source Surface Likely duration 1 Day Surface water impacts on Friday.	RISK AREA C Impact SIGNIFICANT Likelihood LOW Source River Surface Likely duration 2 Days Inland flooding impacts possible Fri & Sat. River impacts only from Sat.
------------------------------------------------------------------------------------------------------------------------------------------------------------------------------------------------------------	------------------------------------------------------------------------------------------------------------------------------------------------------------	-----------------------------------------------------------------------------------------------------------------------------------------------------------------------------------------------------------

RISK AREA D
 Impact **MINOR**
 Likelihood **MEDIUM**
 Source River Surface
 Likely duration 2 Days
 Minor surface water impacts probable today. Rivers may respond into Saturday.

RISK AREA E
 Impact **MINOR**
 Likelihood **MEDIUM**
 Source River Surface
 Likely duration 2 Days
 River impacts Friday and Saturday. Surface water on Friday only.

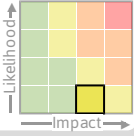


Flood Guidance Statement

15:00hrs Friday 18 December 2020

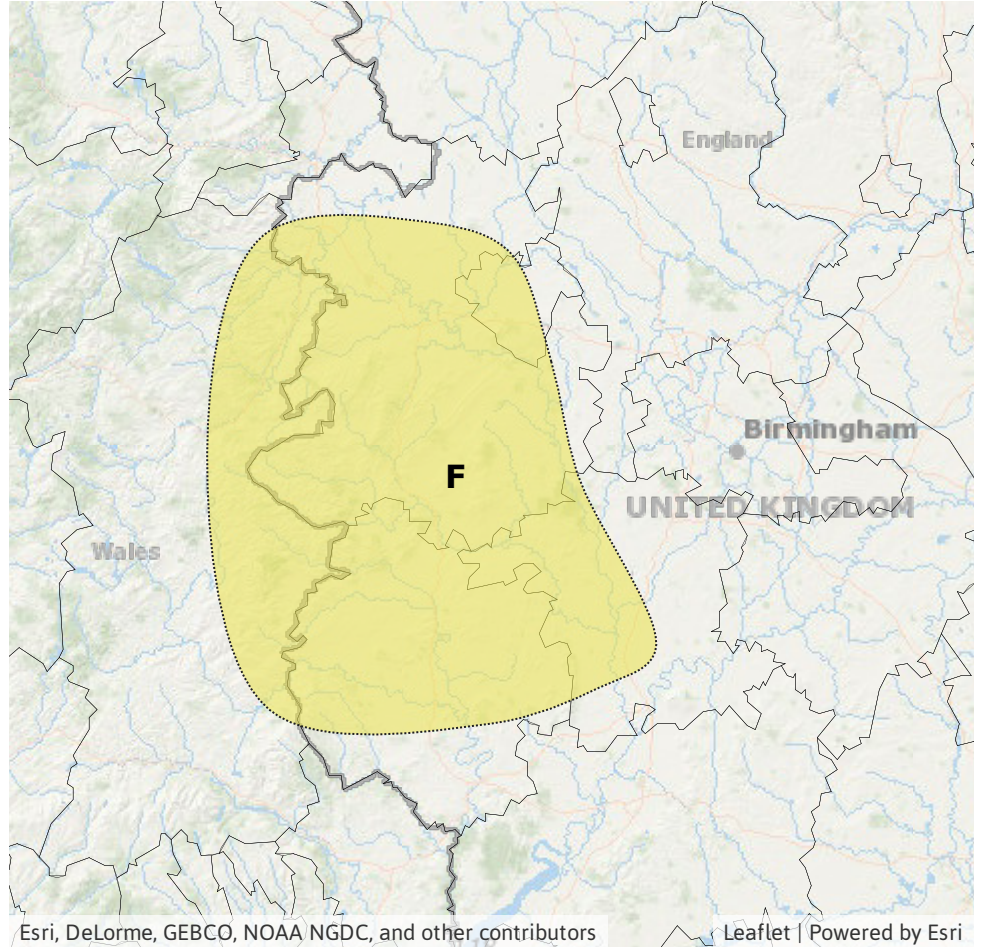
Specific Area of Concern Map 2: Sunday 20 to Tuesday 22 December

RISK AREA F
Impact **SIGNIFICANT**
Likelihood **VERY LOW**



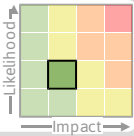
Source River
Likely duration 3 Days

Ongoing river impacts.



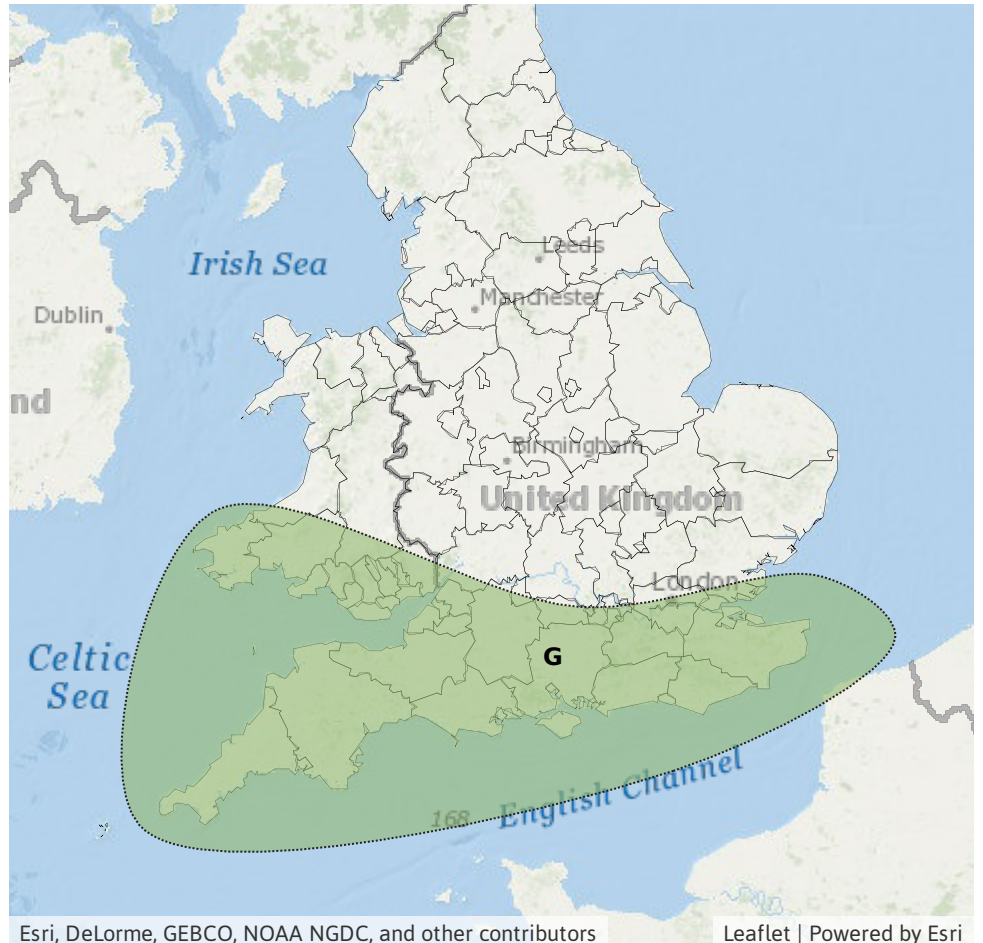
Specific Area of Concern Map 3: Monday 21 and Tuesday 22 December

RISK AREA G
Impact **MINOR**
Likelihood **LOW**



Source River Surface
Likely duration 2 Days

Widespread rain on sensitive catchments



Assessment of flood risk



Surface water

The surface water flood risk is MEDIUM on Friday.

Significant surface water flooding impacts are probable in the south of Wales and the south-west of England today (Friday) following heavy rain. Significant surface water flooding impacts are possible more widely in parts of Wales and western and central England today.

Minor surface water flooding impacts are also probable in parts of the north of Wales and the north west of England today.

Further minor surface water flooding impacts are possible on Monday and Tuesday in the south of Wales and the south of England due to another spell of rain.



Rivers

The river flood risk is MEDIUM on Friday and Saturday and LOW thereafter.

Significant river flooding impacts are probable in South Wales today (Friday) and Saturday following heavy rain. Significant river flooding impacts are also possible more widely in Wales, in the south-west of England and western parts of the Midlands today and tomorrow.

Minor impacts are probable in parts of north-west England, possible in the north-west of Wales and possible but not expected more widely across Wales and the north and west of England today and Saturday.

Significant river flooding impacts are possible but not expected from Sunday until Tuesday in parts of the Midlands as larger rivers continue to respond to recent rain.

Further minor river flooding impacts are possible on Monday and Tuesday in the south of Wales and the south of England due to another spell of rain on already sensitive catchments.



Coastal/Tidal

The coastal/tidal flood risk is VERY LOW for the next five days.



Groundwater

The groundwater flood risk is VERY LOW for the next five days.

Flood risk matrix



Summary of potential impacts

MINIMAL

Isolated and minor flooding of low-lying land and roads
Isolated spray/wave on coastal promenades
Little or no disruption to travel, but wet road surfaces

MINOR

Localised flooding of land and roads
Flooding affecting individual properties
Disruption to travel and key sites in flood plans

SIGNIFICANT

Flooding affecting parts of communities
Possible danger to life and damage to buildings/structures
Disruption to travel and key sites in flood plans

SEVERE

Danger to life, severe disruption to travel
Widespread flooding affecting whole communities
Widespread disruption or loss of infrastructure
Large scale evacuation of properties possible

Next statement due **10:30hrs Saturday 19 December 2020 (all times are local)**

Contact details **Flood Forecasting Centre Duty Hydrometeorologist - 0300 12345 01**

More information <http://www.ffc-environment-agency.metoffice.gov.uk>