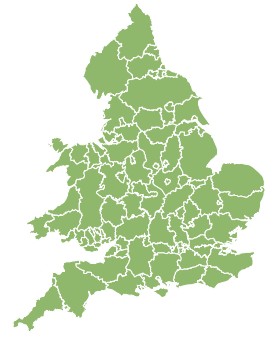
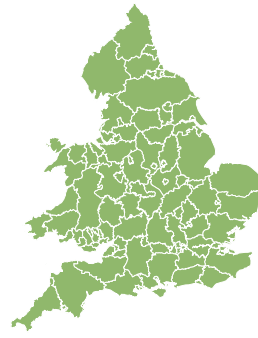
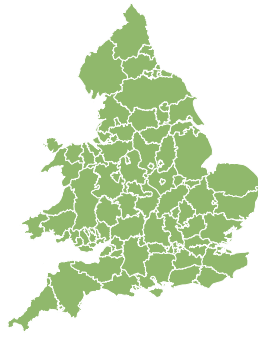


Flood Guidance Statement

10:30hrs Sunday 06 December 2020



Sunday

6 Dec 2020 10:30-23:59
Trend since last FGS

Increased ↑

Monday

7 Dec 2020

Increased ↑

Tuesday

8 Dec 2020

Increased ↑

Wednesday

9 Dec 2020

Steady →

Thursday

10 Dec 2020

Increased ↑

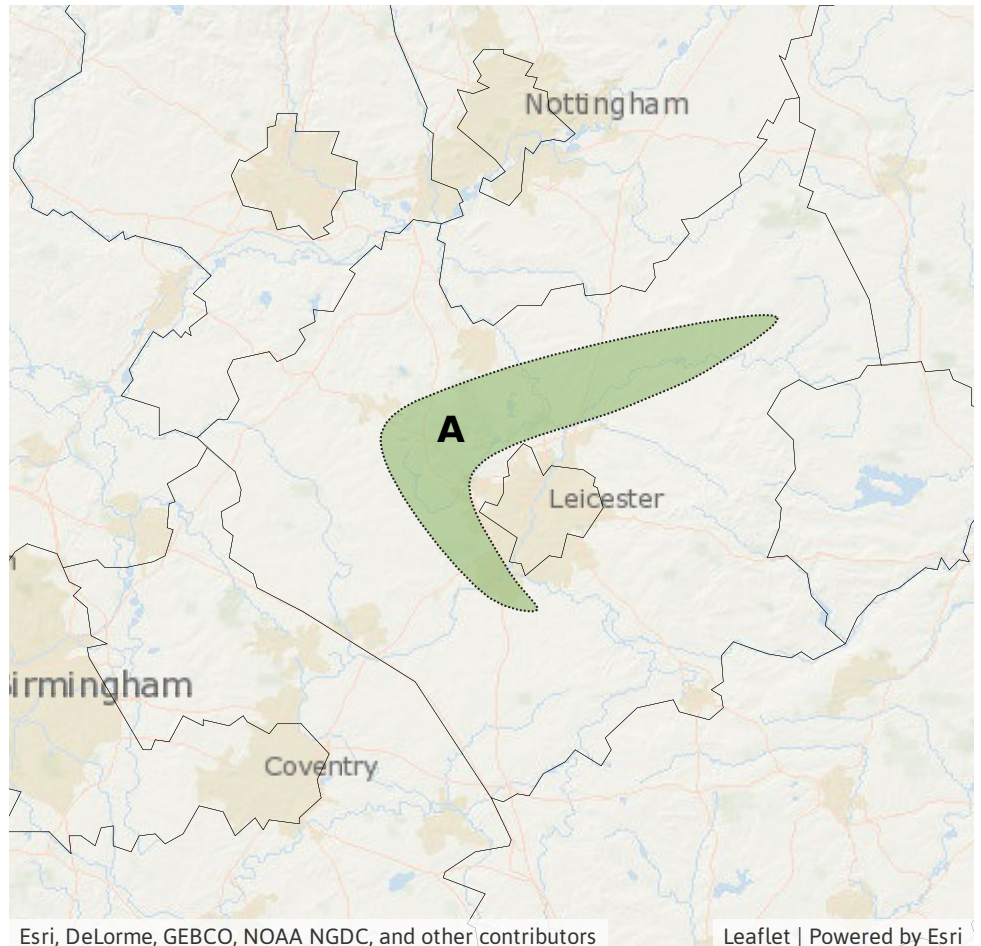
Minor river flooding impacts are possible in parts of Leicestershire today. Minor flooding impacts are also possible but not expected in places later on Monday into Tuesday and on Thursday. The overall flood risk is VERY LOW.

Specific Area of Concern Map 1: Sunday 06 December 2020

RISK AREA A
Impact **MINOR**
Likelihood **LOW**

Source River
Likely duration 1 Day

Potential for river flooding impacts caused by previous rainfall.



Assessment of flood risk



Rivers

The river flood risk is VERY LOW for the next five days.

Ongoing minor river flooding impacts are possible in parts of Leicestershire today. This is due to rain that has already fallen.

Minor river flooding impacts are possible but not expected over parts of the north-east of England later on Monday and into Tuesday, and across parts of Wales and the south-west of England on Thursday.



Surface water

The surface water flood risk is VERY LOW for the next five days.

Minor surface water flooding impacts are possible but not expected over parts of the north-east of England later on Monday and into Tuesday, and across parts of Wales and the south-west of England on Thursday.



Coastal/Tidal

The coastal/tidal flood risk is VERY LOW for the next five days.



Groundwater

The groundwater flood risk is VERY LOW for the next five days.

Flood risk matrix



Summary of potential impacts

MINIMAL

Isolated and minor flooding of low-lying land and roads
Isolated spray/wave on coastal promenades
Little or no disruption to travel, but wet road surfaces

MINOR

Localised flooding of land and roads
Flooding affecting individual properties
Disruption to travel and key sites in flood plans

SIGNIFICANT

Flooding affecting parts of communities
Possible danger to life and damage to buildings/structures
Disruption to travel and key sites in flood plans

SEVERE

Danger to life, severe disruption to travel
Widespread flooding affecting whole communities
Widespread disruption or loss of infrastructure
Large scale evacuation of properties possible

Next statement due **10:30hrs Monday 07 December 2020 (all times are local)**

Contact details **Flood Forecasting Centre Duty Hydrometeorologist - 0300 12345 01**

More information <http://www.ffc-environment-agency.metoffice.gov.uk>