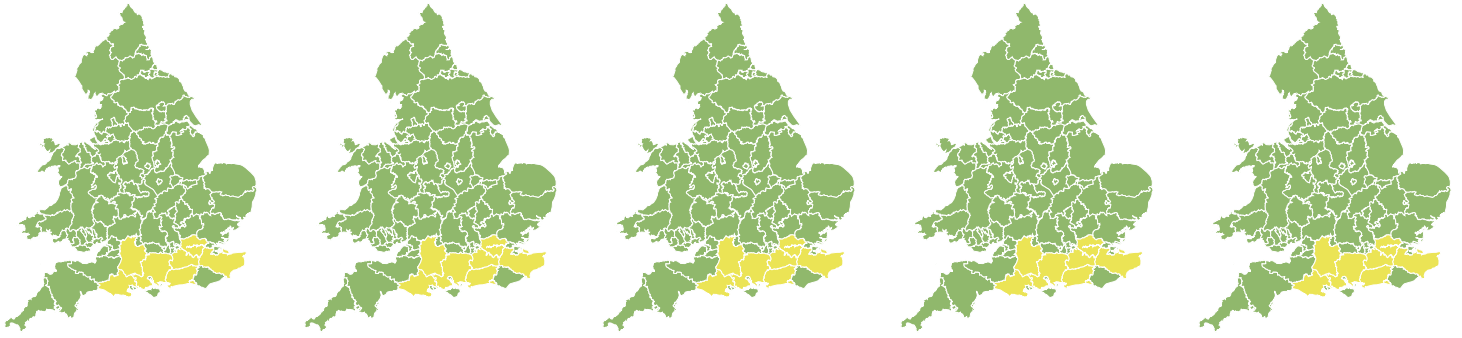


# Flood Guidance Statement

10:30hrs Saturday 14 March 2020



<b>Saturday</b> 14 Mar 2020 10:30-23:59 Trend since last FGS <b>Steady</b> →	<b>Sunday</b> 15 Mar 2020 <b>Steady</b> →	<b>Monday</b> 16 Mar 2020 <b>Steady</b> →	<b>Tuesday</b> 17 Mar 2020 <b>Steady</b> →	<b>Wednesday</b> 18 Mar 2020 <b>Increased</b> ↑
---	---	---	--	---

Ongoing minor groundwater and river flooding in places. Further minor river flooding impacts possible on Sunday in the north of England and Wales. The overall flood risk is **LOW**.

## Specific Areas of Concern Map 1: Saturday 14 to Wednesday 18 March 2020

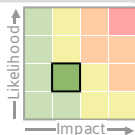


# Flood Guidance Statement

10:30hrs Saturday 14 March 2020

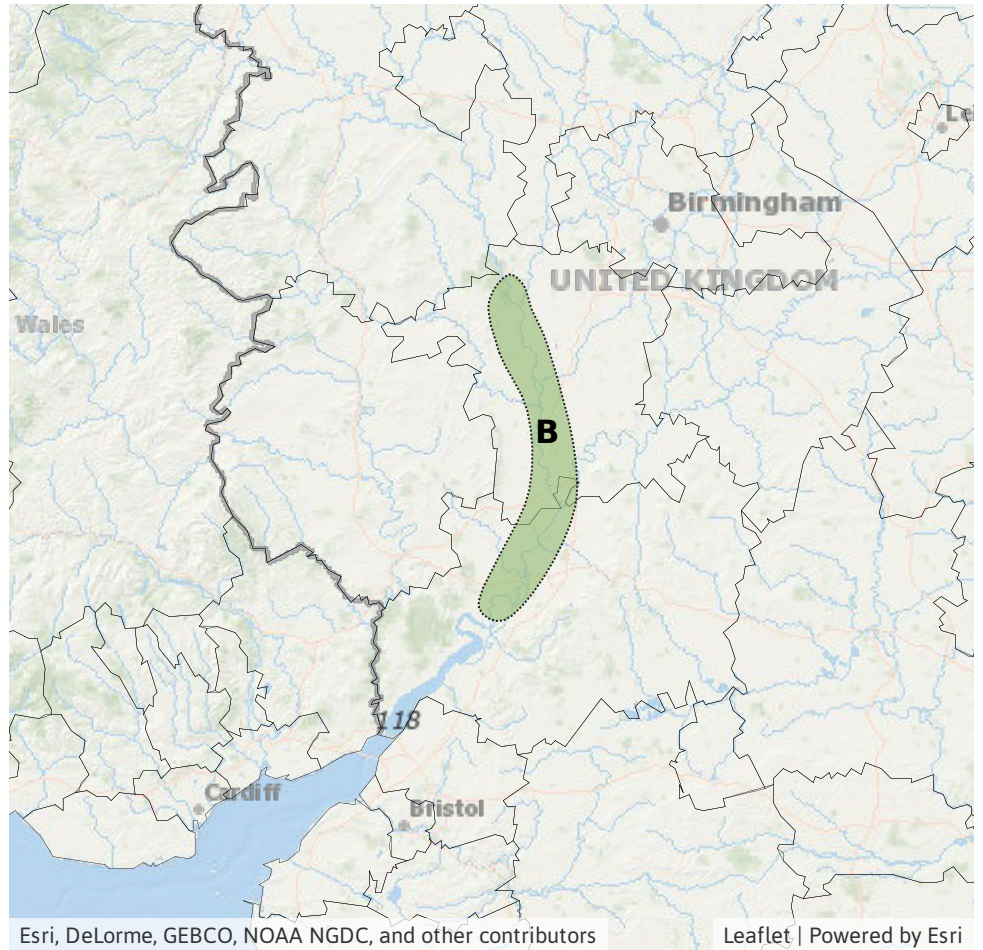
### Specific Areas of Concern Map 2: Saturday 14 March 2020

**RISK AREA B**  
Impact **MINOR**  
Likelihood **LOW**



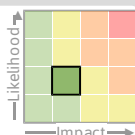
Source River  
Likely duration 1 Day

Middle and Lower Severn responding to recent rainfall.



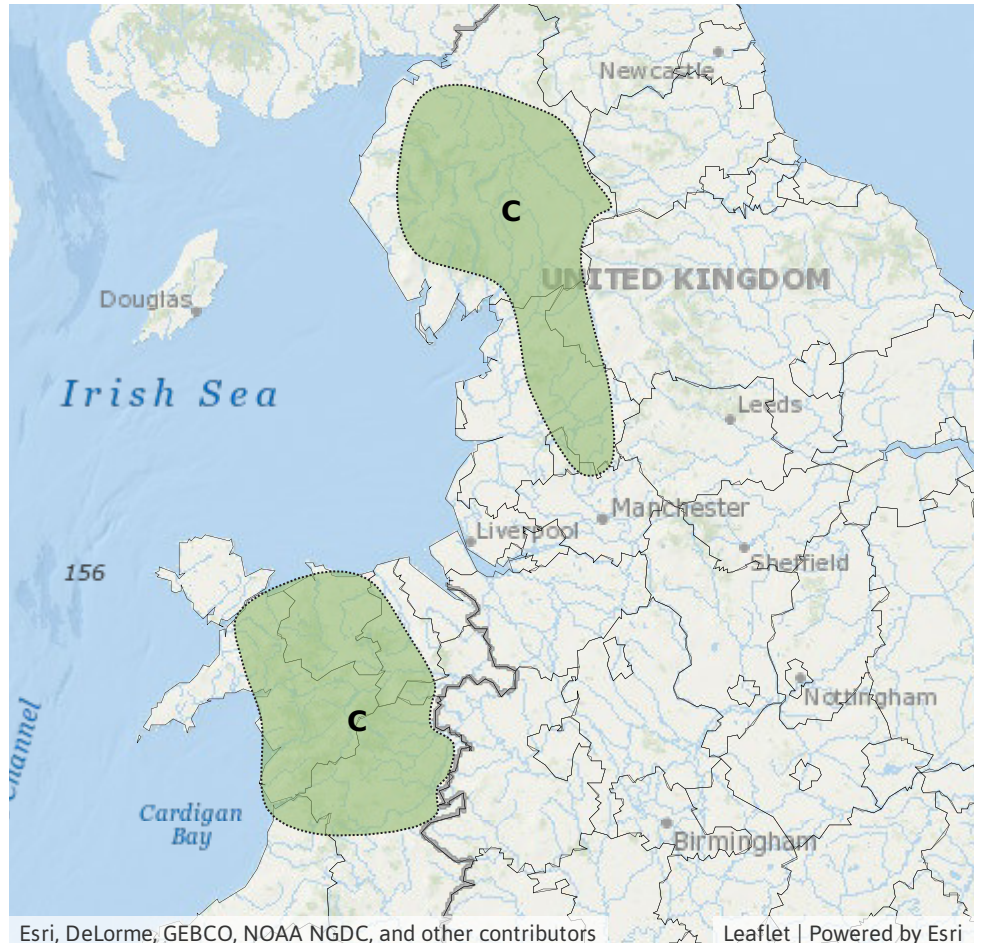
### Specific Areas of Concern Map 3: Sunday 15 March 2020

**RISK AREA C**  
Impact **MINOR**  
Likelihood **LOW**



Source River  
Likely duration 1 Day

River flooding impacts possible from heavy and persistent rain.



## Assessment of flood risk



### Groundwater

---

The groundwater flood risk is LOW.

Minor groundwater flooding impacts are expected to continue in parts of the south of England for at least the next five days. Groundwater levels also remain high in parts of Berkshire and North Lincolnshire, although impacts are currently minimal here.



### Rivers

---

The overall river flood risk is VERY LOW.

Minor river flooding impacts are possible along the middle and lower reaches of the River Severn today, as the river continues to respond to recent rain.

Minor river flooding impacts are possible over parts of Wales and the north-west of England on Sunday, due to further rain.

Local minor river flooding impacts are possible, but not expected, more widely over Wales and northern England from late Saturday and on Sunday, and again on Tuesday and Wednesday, as rain falls over already wet river catchments in these areas.



### Surface water

---

The overall surface water flood risk is VERY LOW.

Local minor surface water flooding impacts are possible, but not expected, for parts of Wales and the north of England from late Saturday and on Sunday, and again on Tuesday and Wednesday, as rain falls over saturated ground in these areas.



### Coastal/Tidal

---

The overall coastal/tidal flood risk is VERY LOW for the next five days.

# Flood Guidance Statement

10:30hrs Saturday 14 March 2020

## Flood risk matrix



## Summary of potential impacts

### MINIMAL

Isolated and minor flooding of low-lying land and roads  
Isolated spray/wave on coastal promenades  
Little or no disruption to travel, but wet road surfaces

### MINOR

Localised flooding of land and roads  
Flooding affecting individual properties  
Disruption to travel and key sites in flood plans

### SIGNIFICANT

Flooding affecting parts of communities  
Possible danger to life and damage to buildings/structures  
Disruption to travel and key sites in flood plans

### SEVERE

Danger to life, severe disruption to travel  
Widespread flooding affecting whole communities  
Widespread disruption or loss of infrastructure  
Large scale evacuation of properties possible

Next statement due **10:30hrs Sunday 15 March 2020 (all times are local)**

Contact details **Flood Forecasting Centre Duty Hydrometeorologist - 0300 12345 01**

More information <http://www.ffc-environment-agency.metoffice.gov.uk>