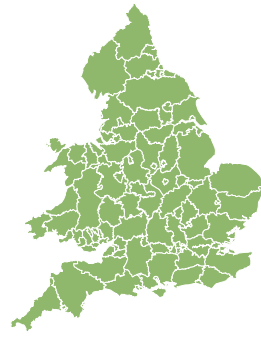


Flood Guidance Statement

10:30hrs Sunday 12 January 2020



Sunday

12 Jan 2020 10:30-23:59
Trend since last FGS

Decreased ↓

Monday

13 Jan 2020

Steady →

Tuesday

14 Jan 2020

Increased ↑

Wednesday

15 Jan 2020

Increased ↑

Thursday

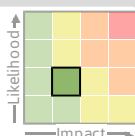
16 Jan 2020

Steady →

Minor river, surface water and coastal flooding impacts are possible in parts of the south of England on Tuesday into Wednesday. The overall flood risk is VERY LOW.

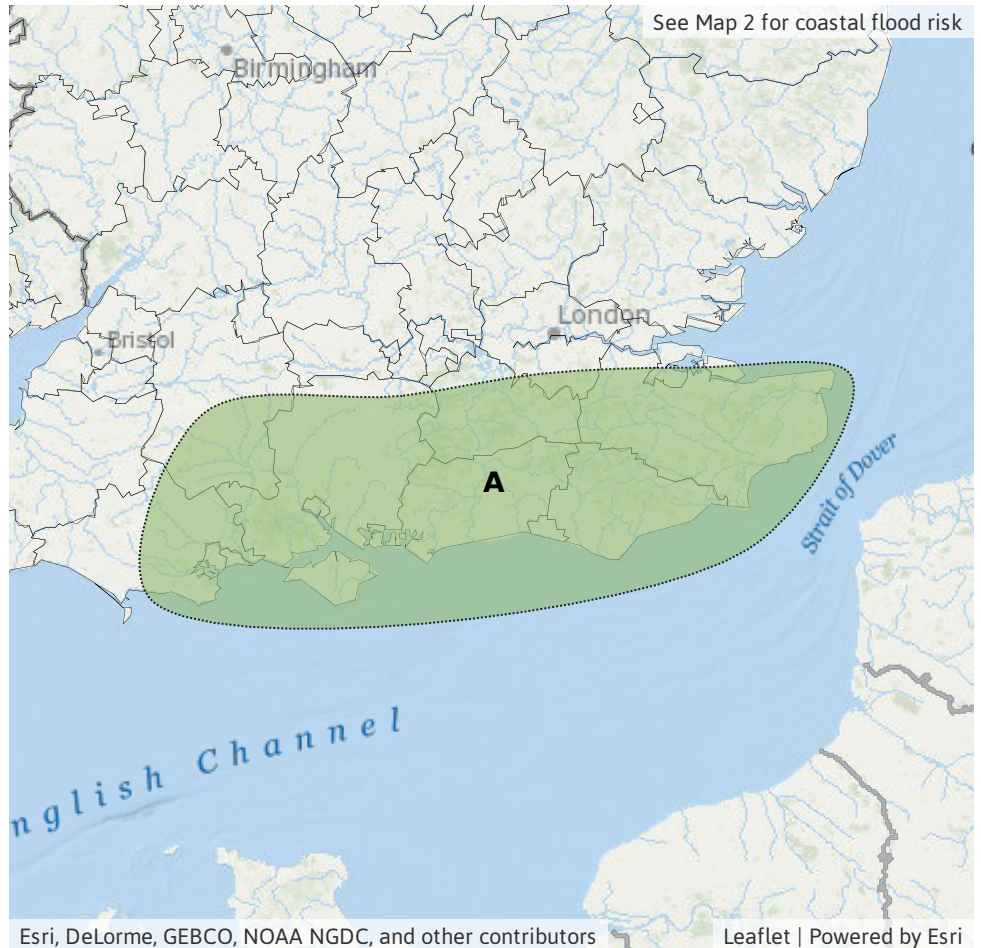
Specific Areas of Concern Map 1: Tuesday 14 and Wednesday 15 January 2020

RISK AREA A
Impact **MINOR**
Likelihood **LOW**



Source River Surface
Likely duration 2 Days

Due to successive periods of rain from late Monday to Wednesday morning.

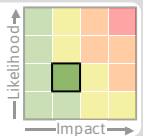


Flood Guidance Statement

10:30hrs Sunday 12 January 2020

Specific Areas of Concern Map 2: Tuesday 14 and Wednesday 15 January 2020

RISK AREA B
Impact **MINOR**
Likelihood **LOW**



Source Coastal/Tidal
Likely duration 2 Days

Flooding impacts through the overnight period into Wednesday morning



Assessment of flood risk



Rivers

The river flood risk is VERY LOW for the next five days.

Minor river flooding impacts are possible across parts of the south of England at times on Tuesday into Wednesday, particularly where catchments are sensitive from rainfall on preceding days.



Surface water

The surface water flood risk is VERY LOW for the next five days.

Minor surface water flooding impacts are possible across parts of the south of England at times on Tuesday into Wednesday, particularly where the ground is wet from rainfall on preceding days.



Coastal/Tidal

The coastal / tidal flood risk is VERY LOW for the next five days.

Minor coastal flooding impacts are possible along parts of the south coast of England later on Tuesday and into Wednesday. This is due to spring tides combining with strong winds and large waves.

Minor coastal flooding impacts are also possible but not expected on Monday and Tuesday for parts of the south and west coasts of Wales and south-west England, and the north-east coast of England on Tuesday. Elsewhere only minimal coastal impacts are expected.



Groundwater

The groundwater flood risk is VERY LOW for the next five days.

Isolated flooding from groundwater has occurred in parts of Hampshire, West Sussex and Brighton and Hove, and minor disruption is expected to continue in these areas for at least the next five days. However, awareness of the groundwater flooding is high, the situation is being managed and is not forecast to get worse.

Groundwater levels are also high in Dorset, Wiltshire, North Lincolnshire and East Sussex, although impacts here are minimal.

Flood Guidance Statement

10:30hrs Sunday 12 January 2020

Flood risk matrix



Summary of potential impacts

MINIMAL

Isolated and minor flooding of low-lying land and roads
Isolated spray/wave on coastal promenades
Little or no disruption to travel, but wet road surfaces

MINOR

Localised flooding of land and roads
Flooding affecting individual properties
Disruption to travel and key sites in flood plans

SIGNIFICANT

Flooding affecting parts of communities
Possible danger to life and damage to buildings/structures
Disruption to travel and key sites in flood plans

SEVERE

Danger to life, severe disruption to travel
Widespread flooding affecting whole communities
Widespread disruption or loss of infrastructure
Large scale evacuation of properties possible

Next statement due **10:30hrs Monday 13 January 2020 (all times are local)**

Contact details **Flood Forecasting Centre Duty Hydrometeorologist - 0300 12345 01**

More information <http://www.ffc-environment-agency.metoffice.gov.uk>