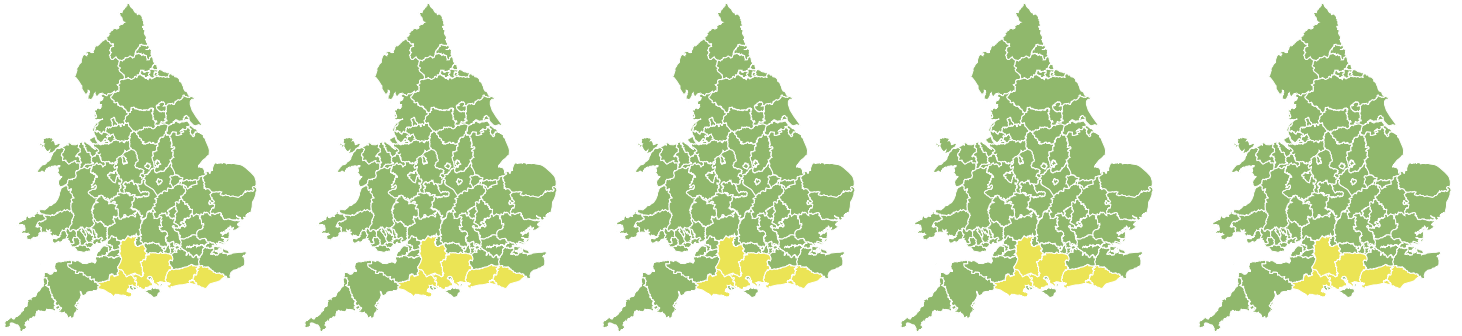


Flood Guidance Statement

10:30hrs Wednesday 25 December 2019



Wednesday

25 Dec 2019 10:30-23:59
Trend since last FGS

Steady →

Thursday

26 Dec 2019

Steady →

Friday

27 Dec 2019

Steady →

Saturday

28 Dec 2019

Steady →

Sunday

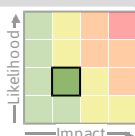
29 Dec 2019

Steady →

On-going minor groundwater flooding impacts throughout. Minor river and surface water flooding impacts are possible across parts of England and Wales on Thursday and Friday. The overall flood risk is LOW.

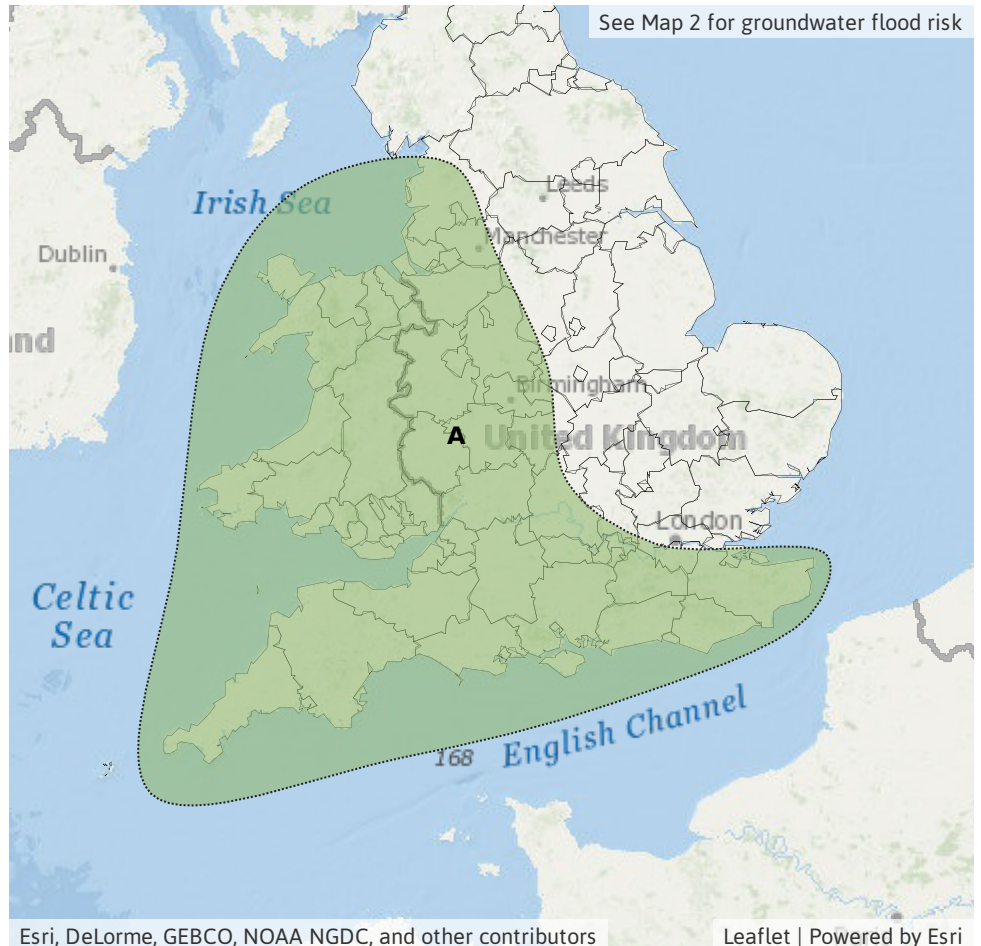
Specific Areas of Concern Map 1: Thursday 26 and Friday 27 December

RISK AREA A
Impact **MINOR**
Likelihood **LOW**



Source River Surface
Likely duration 2 Days

Widespread rainfall on sensitive catchments.



Flood Guidance Statement

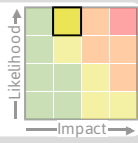
10:30hrs Wednesday 25 December 2019

Specific Areas of Concern Map 2: Wednesday 25 to Sunday 29 December

RISK AREA B

Impact **MINOR**

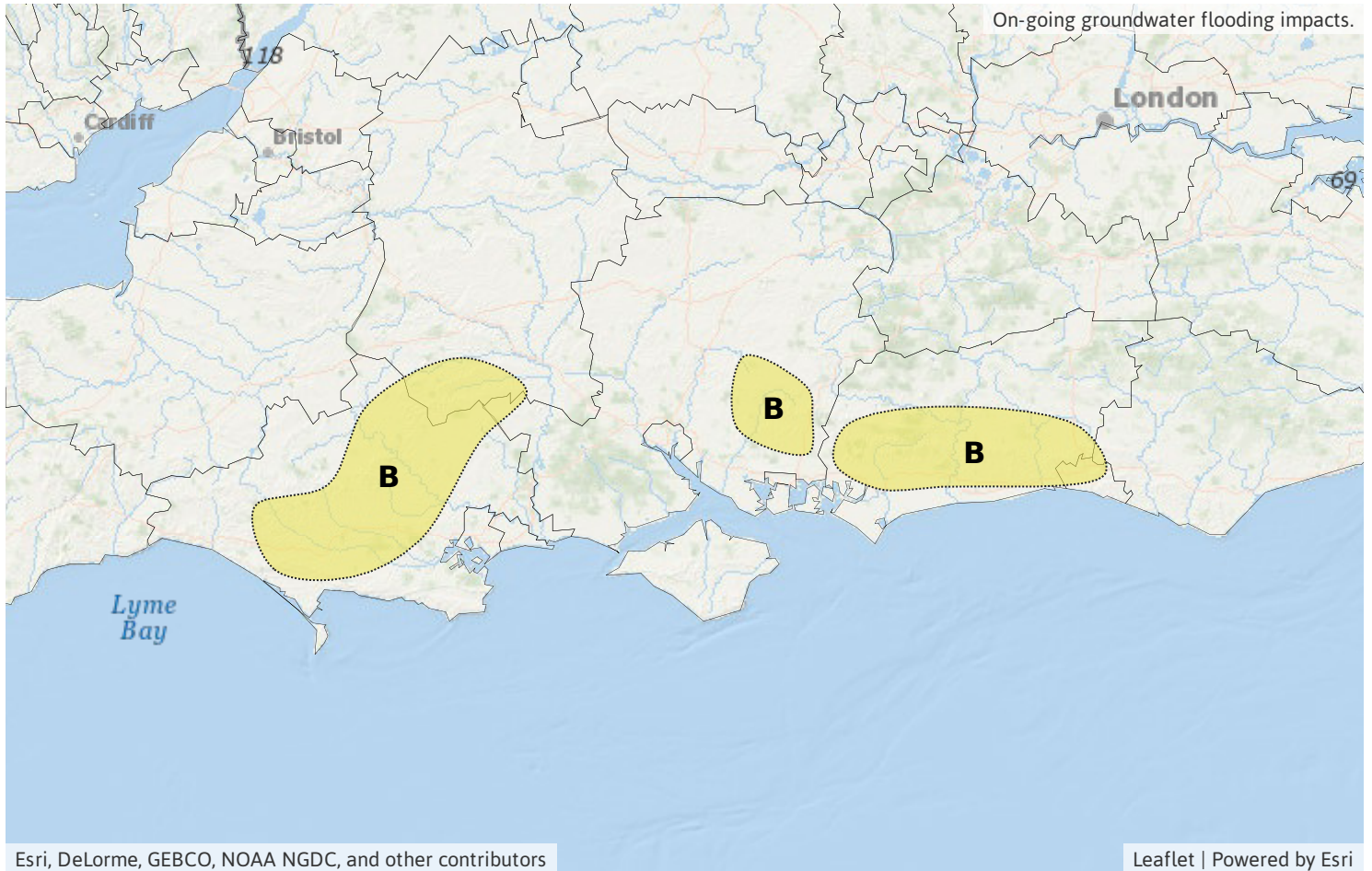
Likelihood **HIGH**



Source Ground

Likely duration 5 + Days

Local groundwater flooding for at least the next five days.



Assessment of flood risk



Groundwater

The groundwater flood risk is LOW for the next five days.

Local minor groundwater flooding impacts are expected through parts of the south of England for at least the next five days. Levels will continue to rise in these areas due to recent and forecast rain. Groundwater levels are also high in North Lincolnshire although impacts here are still minimal.



Rivers

The river flood risk is VERY LOW for the next five days.

Minor river flooding impacts are possible on Thursday and Friday across parts of England and Wales due to widespread and perhaps heavy rain falling on sensitive catchments.



Surface water

The surface water flood risk is VERY LOW for the next five days.

Minor surface water flooding impacts are possible on Thursday and into Friday morning across parts of England and Wales due to widespread and perhaps heavy rain falling on saturated ground.



Coastal/Tidal

The coastal/tidal flood risk is VERY LOW for the next five days.

Minor coastal flooding impacts are possible but not expected for parts of the English Channel coast at times on Thursday. This is due to strong winds and large waves leading to the possibility of some local spray and wave overtopping.

Flood risk matrix



Summary of potential impacts

MINIMAL

Isolated and minor flooding of low-lying land and roads
Isolated spray/wave on coastal promenades
Little or no disruption to travel, but wet road surfaces

MINOR

Localised flooding of land and roads
Flooding affecting individual properties
Disruption to travel and key sites in flood plans

SIGNIFICANT

Flooding affecting parts of communities
Possible danger to life and damage to buildings/structures
Disruption to travel and key sites in flood plans

SEVERE

Danger to life, severe disruption to travel
Widespread flooding affecting whole communities
Widespread disruption or loss of infrastructure
Large scale evacuation of properties possible

Next statement due **10:30hrs Thursday 26 December 2019 (all times are local)**

Contact details **Flood Forecasting Centre Duty Hydrometeorologist - 0300 12345 01**

More information <http://www.ffc-environment-agency.metoffice.gov.uk>