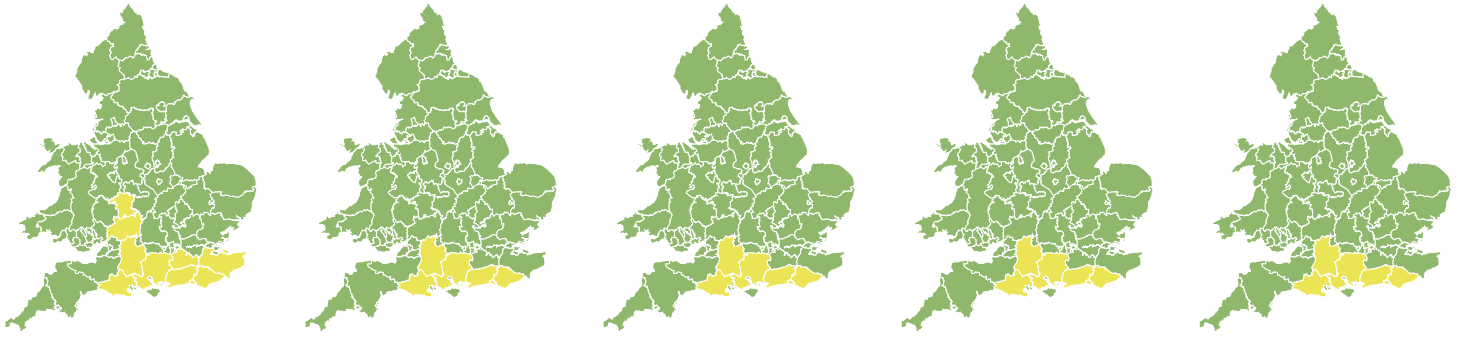


Flood Guidance Statement

10:30hrs Tuesday 24 December 2019



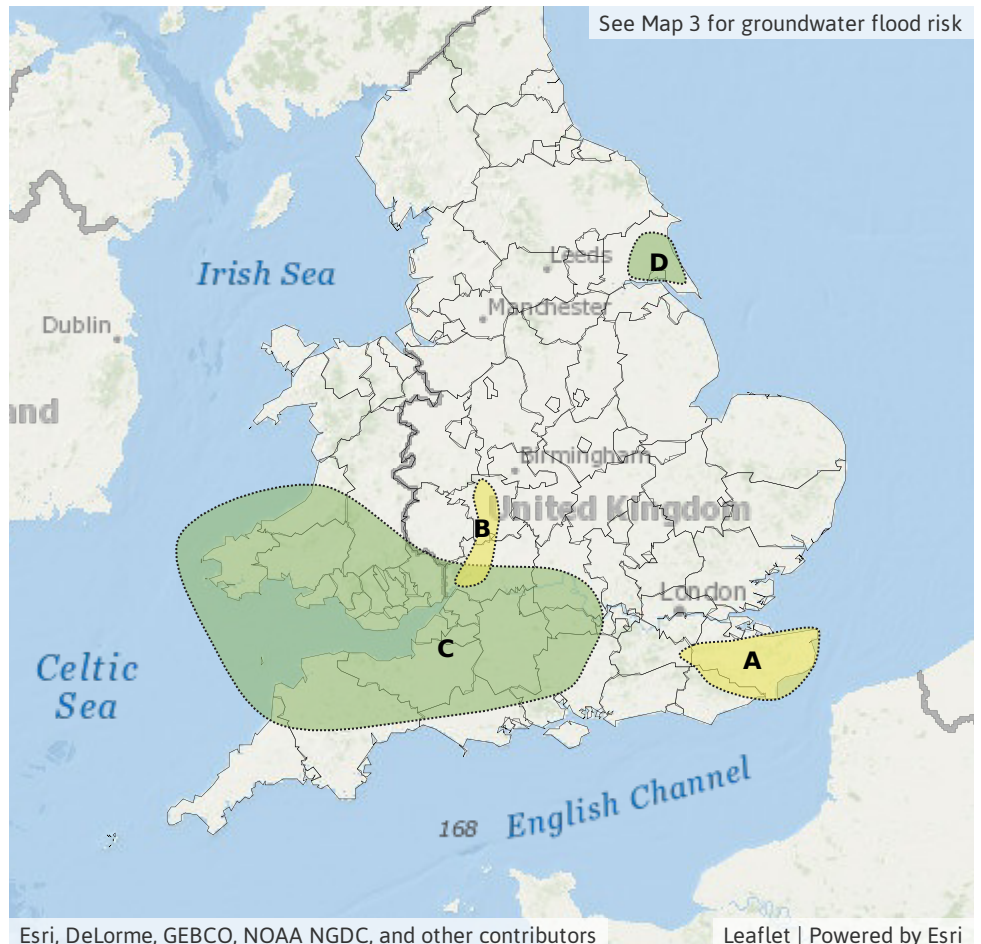
Tuesday 24 Dec 2019 10:30-23:59 Trend since last FGS Steady →	Wednesday 25 Dec 2019 Steady →	Thursday 26 Dec 2019 Increased ↑	Friday 27 Dec 2019 Increased ↑	Saturday 28 Dec 2019 Steady →
---	---	---	---	--

Ongoing minor river flooding impacts today and ongoing minor groundwater impacts throughout. Minor river and surface water flooding impacts also possible elsewhere today and on Thursday and Friday. The overall flood risk is LOW.

Specific Areas of Concern Map 1: Tuesday 24 December

RISK AREA A Impact MINOR Likelihood HIGH Source River Likely duration 1 Day Ongoing river flooding impacts today.	RISK AREA B Impact MINOR Likelihood MEDIUM Source River Likely duration 1 Day Ongoing flooding impacts today on the lower River Severn.	RISK AREA C Impact MINOR Likelihood LOW Source River Surface Likely duration 1 Day Localised impacts possible today from heavy showers on saturated ground.
---	---	---

RISK AREA D Impact MINOR Likelihood LOW Source River Likely duration 1 Day Localised impacts possible today from outbreaks of rain on saturated ground.

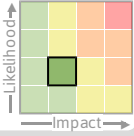


Flood Guidance Statement

10:30hrs Tuesday 24 December 2019

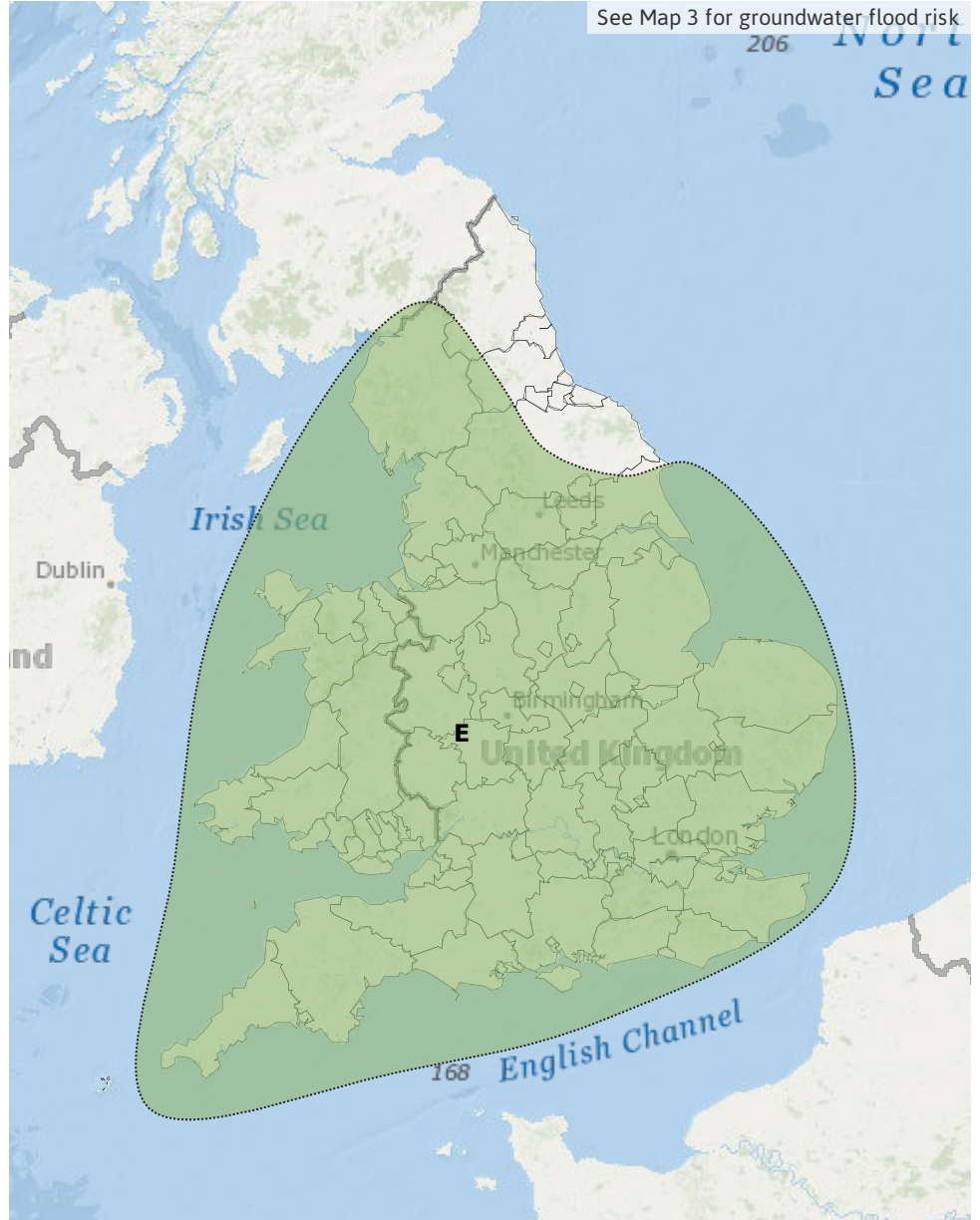
Specific Areas of Concern Map 2: Thursday 26 and Friday 27 December

RISK AREA E
Impact **MINOR**
Likelihood **LOW**



Source River Surface
Likely duration 2 Days

Widespread rainfall on sensitive catchments



Esri, DeLorme, GEBCO, NOAA NGDC, and other contributors

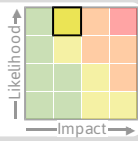
Leaflet | Powered by Esri

Flood Guidance Statement

10:30hrs Tuesday 24 December 2019

Specific Areas of Concern Map 3: Tuesday 24 to Saturday 28 December

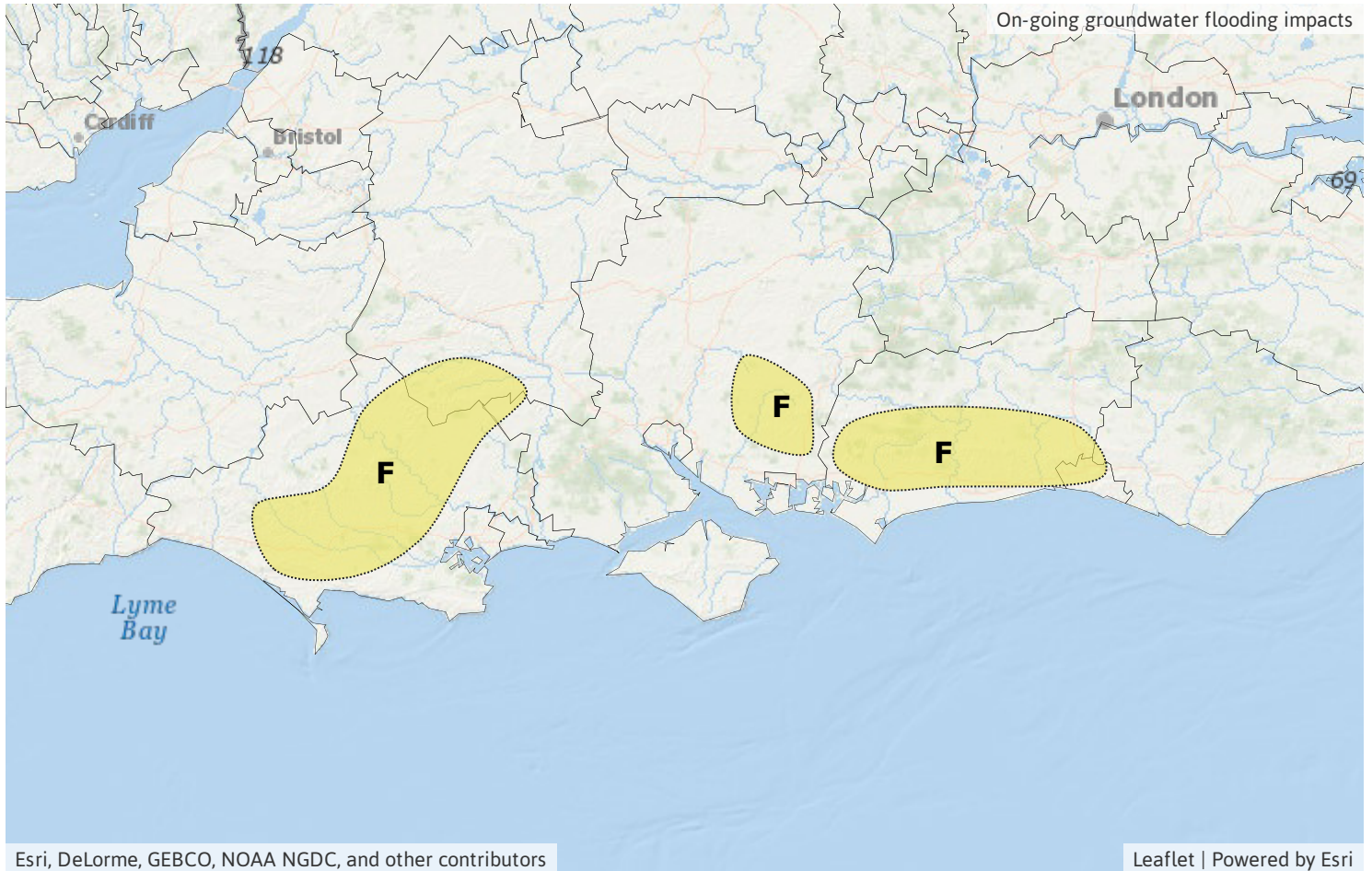
RISK AREA F
Impact **MINOR**
Likelihood **HIGH**



Source Ground

Likely duration 5 + Days

Local groundwater flooding for at least the next five days.



Assessment of flood risk



Rivers

The river flood risk is LOW today (Tuesday) for on-going river impacts.

As rivers continue to respond to recent rainfall, minor river flooding impacts are expected in parts of south-east England and are probable on the lower River Severn today. Local minor river flooding impacts are also possible today from heavy, thundery showers in parts of the south-west England and south Wales and from outbreaks of rain over the East Riding of Yorkshire falling on saturated catchments.

Minor river flooding impacts are possible on Thursday and Friday across parts of much of England and Wales as widespread rain may fall on sensitive catchments.



Groundwater

The groundwater flood risk is LOW for the next five days.

Local minor groundwater flooding impacts are expected through parts of the south of England (as shown on Area of Concern Map 3) for at least the next five days. Levels will continue to rise in these areas due to recent and forecast rain. Groundwater levels are also high in North Lincolnshire although impacts here are still minimal.



Surface water

The surface water flood risk is VERY LOW for the next five days.

Minor surface water flooding impacts are possible today in parts of the south of England and south Wales, due to heavy, thundery showers and rain falling on already wet ground.

Minor surface water flooding impacts are also possible on Thursday and into Friday across parts of much of England and Wales due to widespread and perhaps heavy rain falling on saturated.



Coastal/Tidal

The coastal/tidal flood risk is VERY LOW for the next five days.

Minor coastal flooding impacts are possible but not expected for parts of the English Channel coast at times today (Tuesday) and on Thursday. This is due to strong winds and large waves leading to the possibility of some local spray and wave overtopping.

Flood risk matrix



Summary of potential impacts

MINIMAL

Isolated and minor flooding of low-lying land and roads
Isolated spray/wave on coastal promenades
Little or no disruption to travel, but wet road surfaces

MINOR

Localised flooding of land and roads
Flooding affecting individual properties
Disruption to travel and key sites in flood plans

SIGNIFICANT

Flooding affecting parts of communities
Possible danger to life and damage to buildings/structures
Disruption to travel and key sites in flood plans

SEVERE

Danger to life, severe disruption to travel
Widespread flooding affecting whole communities
Widespread disruption or loss of infrastructure
Large scale evacuation of properties possible

Next statement due **10:30hrs Wednesday 25 December 2019 (all times are local)**

Contact details **Flood Forecasting Centre Duty Hydrometeorologist - 0300 12345 01**

More information <http://www.ffc-environment-agency.metoffice.gov.uk>