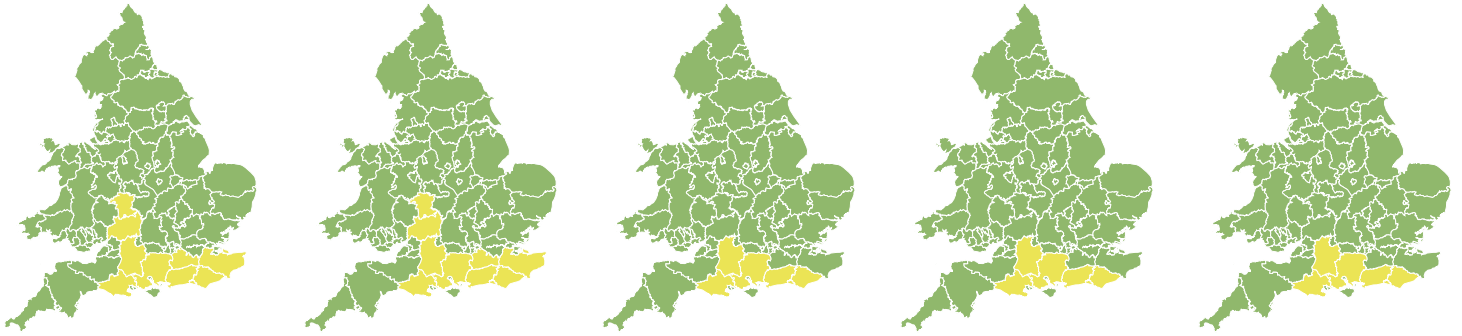


# Flood Guidance Statement

10:30hrs Monday 23 December 2019



**Monday**

23 Dec 2019 10:30-23:59  
Trend since last FGS

Steady →

**Tuesday**

24 Dec 2019

Steady →

**Wednesday**

25 Dec 2019

Steady →

**Thursday**

26 Dec 2019

Decreased ↓

**Friday**

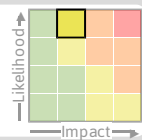
27 Dec 2019

Steady →

Ongoing minor river flooding impacts expected in parts of the south of England. Minor groundwater flooding impacts expected in the south of England through the next five days. The overall flood risk is LOW. See end of FGS for 6-10 forecast.

## Specific Areas of Concern Map 1: Monday 23 to Tuesday 24 December

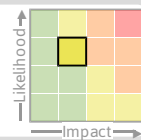
**RISK AREA A**  
Impact **MINOR**  
Likelihood **HIGH**



Source River  
Likely duration 2 Days

Ongoing river flooding impacts today and Tuesday.

**RISK AREA B**  
Impact **MINOR**  
Likelihood **MEDIUM**



Source River  
Likely duration 2 Days

Ongoing flooding impacts today and Tuesday on the lower River Severn.

**RISK AREA C**  
Impact **MINOR**  
Likelihood **LOW**



Source River Surface  
Likely duration 1 Day

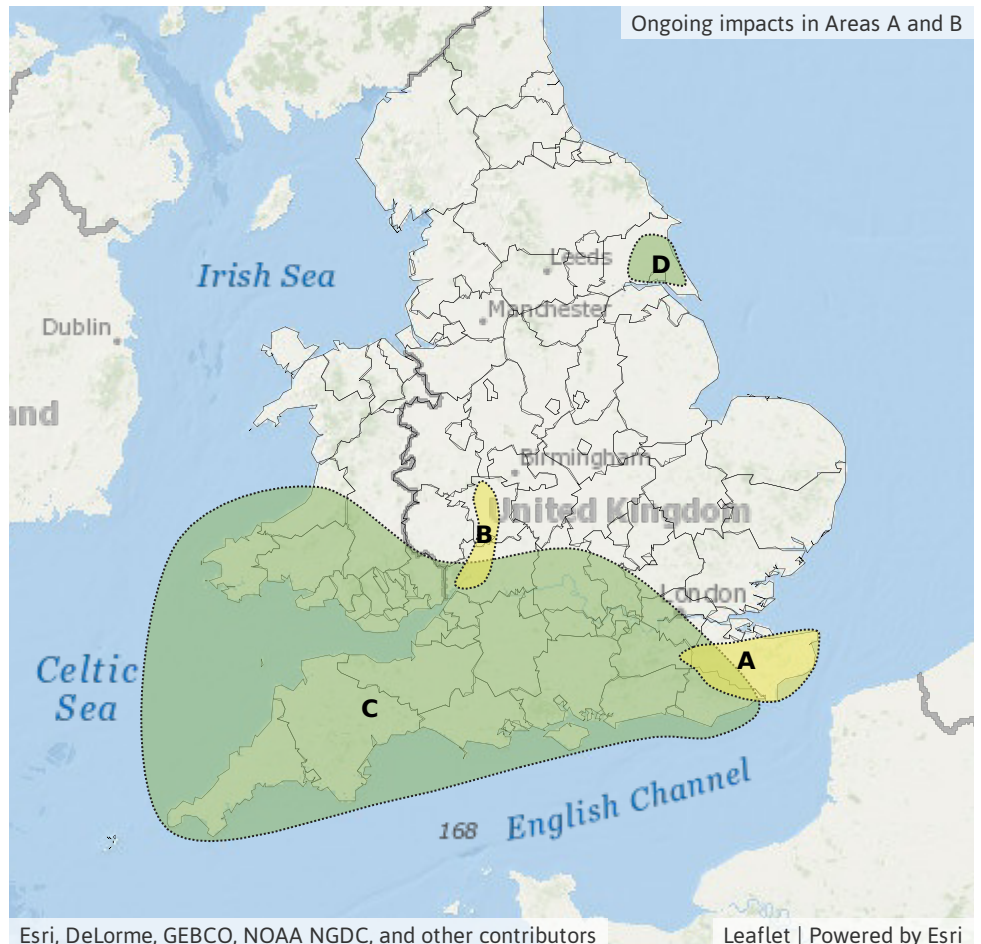
Localised impacts on Tuesday from heavy thundery showers on saturated ground

**RISK AREA D**  
Impact **MINOR**  
Likelihood **LOW**



Source River  
Likely duration 1 Day

Localised impacts possible on Tuesday from heavy showers on saturated ground.



# Flood Guidance Statement

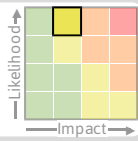
10:30hrs Monday 23 December 2019

### Specific Areas of Concern Map 2: Monday 23 to Friday 27 December

RISK AREA **E**

Impact **MINOR**

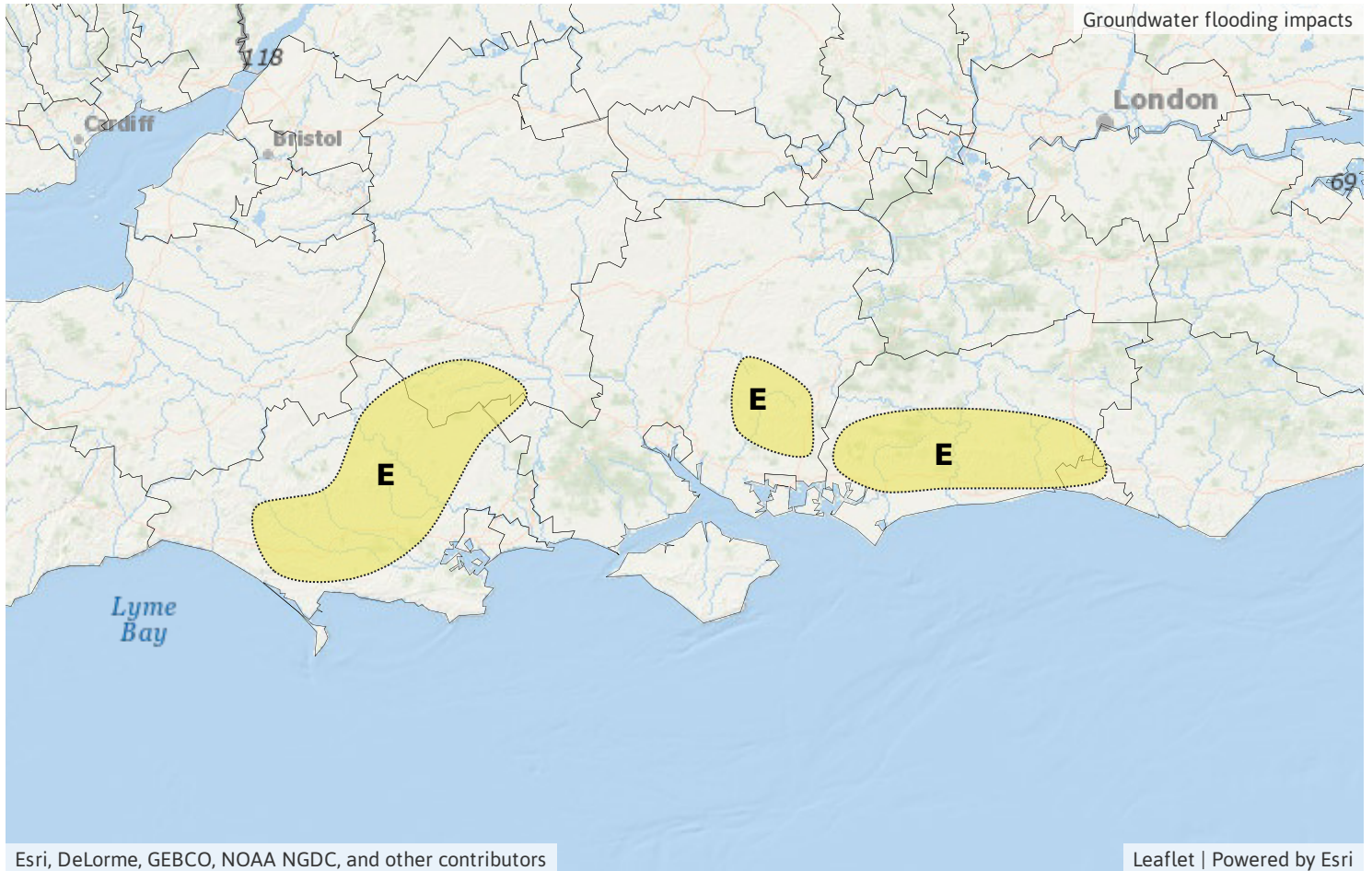
Likelihood **HIGH**



Source Ground

Likely duration 5 + Days

Local groundwater flooding for at least the next five days.



## Assessment of flood risk



### Rivers

---

The river flood risk is LOW today (Monday) and Tuesday.

As rivers continue to respond to recent rainfall, minor river flooding impacts are expected in parts of south-east England and probable on the lower River Severn. Local minor river flooding impacts are also possible on Tuesday from heavy thundery showers in parts of the south of England and the south of Wales and from rain over East Riding of Yorkshire falling on saturated catchments.

Minor river flooding impacts are possible but not expected on Thursday and into Friday across parts of England and Wales in response to rainfall on sensitive catchments.



### Groundwater

---

The groundwater flood risk is LOW for the next five days.

Local minor groundwater flooding impacts are expected through parts of the south of England (as shown on Area of Concern Map 2) for at least the next five days. Levels will continue to rise in these areas due to recent and forecast rain. Groundwater levels are also high in North Lincolnshire although impacts here are still minimal.



### Surface water

---

The surface water flood risk is VERY LOW for the next five days.

Minor surface water flooding impacts are possible in parts of the south of England and the south of Wales later on Monday and into Tuesday, and again on Thursday, due to heavy thundery showers and rain falling on already wet ground.



### Coastal/Tidal

---

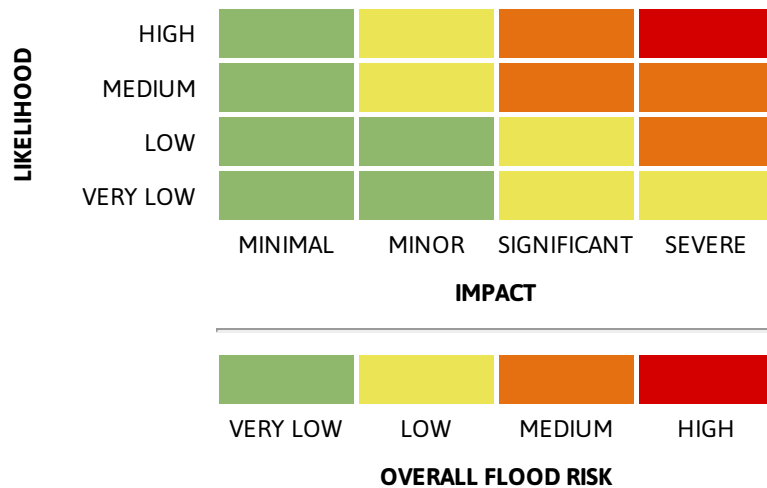
The coastal/tidal flood risk is VERY LOW for the next five days.

Minor coastal flooding impacts are possible but not expected for parts of the English Channel coast at times on Tuesday. This is due to strong winds and large waves leading to the possibility of some local spray and wave overtopping. Further minor impacts are possible but not expected in these areas on Thursday.

### 6-10 day forecast

Groundwater levels expected to continue rising in Dorset, bringing a risk of further impacts.

### Flood risk matrix



### Summary of potential impacts

#### MINIMAL

Isolated and minor flooding of low-lying land and roads  
Isolated spray/wave on coastal promenades  
Little or no disruption to travel, but wet road surfaces

#### MINOR

Localised flooding of land and roads  
Flooding affecting individual properties  
Disruption to travel and key sites in flood plans

#### SIGNIFICANT

Flooding affecting parts of communities  
Possible danger to life and damage to buildings/structures  
Disruption to travel and key sites in flood plans

#### SEVERE

Danger to life, severe disruption to travel  
Widespread flooding affecting whole communities  
Widespread disruption or loss of infrastructure  
Large scale evacuation of properties possible

Next statement due **10:30hrs Tuesday 24 December 2019 (all times are local)**

Contact details **Flood Forecasting Centre Duty Hydrometeorologist - 0300 12345 01**

More information <http://www.ffc-environment-agency.metoffice.gov.uk>