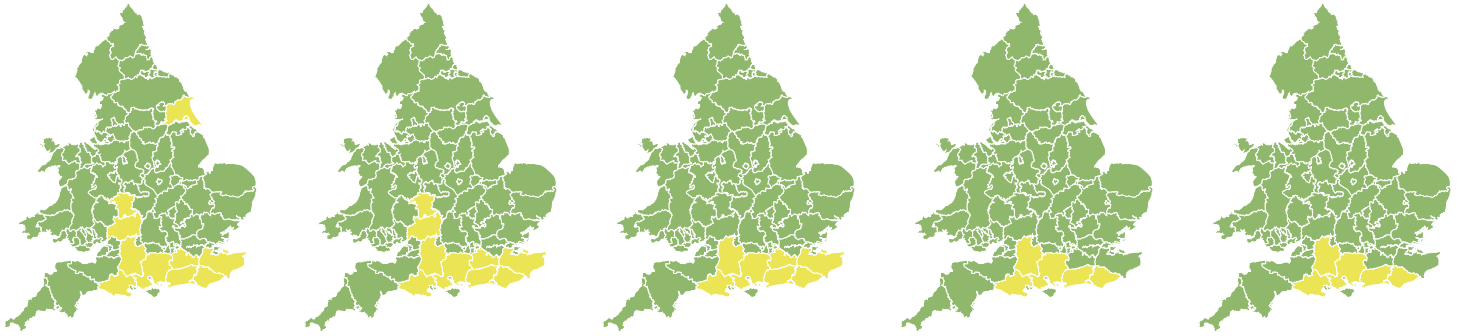


Flood Guidance Statement

10:30hrs Sunday 22 December 2019



Sunday

22 Dec 2019 10:30-23:59
Trend since last FGS

Increased ↑

Monday

23 Dec 2019

Increased ↑

Tuesday

24 Dec 2019

Increased ↑

Wednesday

25 Dec 2019

Increased ↑

Thursday

26 Dec 2019

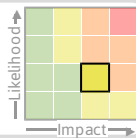
Increased ↑

Ongoing significant river flooding impacts today in parts of south-east England. Minor groundwater flooding impacts expected in the south of England through the next five days. The overall flood risk is LOW. See end of FGS for 6-10 forecast.

Specific Areas of Concern Map 1: Sunday 22 December 2019

RISK AREA A

Impact **SIGNIFICANT**
Likelihood **LOW**



Source River
Likely duration 1 Day

Ongoing significant river flooding today on the Medway, Mole and Stour.

RISK AREA B

Impact **MINOR**
Likelihood **MEDIUM**

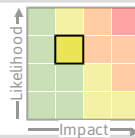


Source River
Likely duration 2 Days

Flooding impacts today and Monday on the lower and middle River Severn.

RISK AREA C

Impact **MINOR**
Likelihood **MEDIUM**



Source River
Likely duration 1 Day

Local ongoing river impacts today in East Yorkshire.

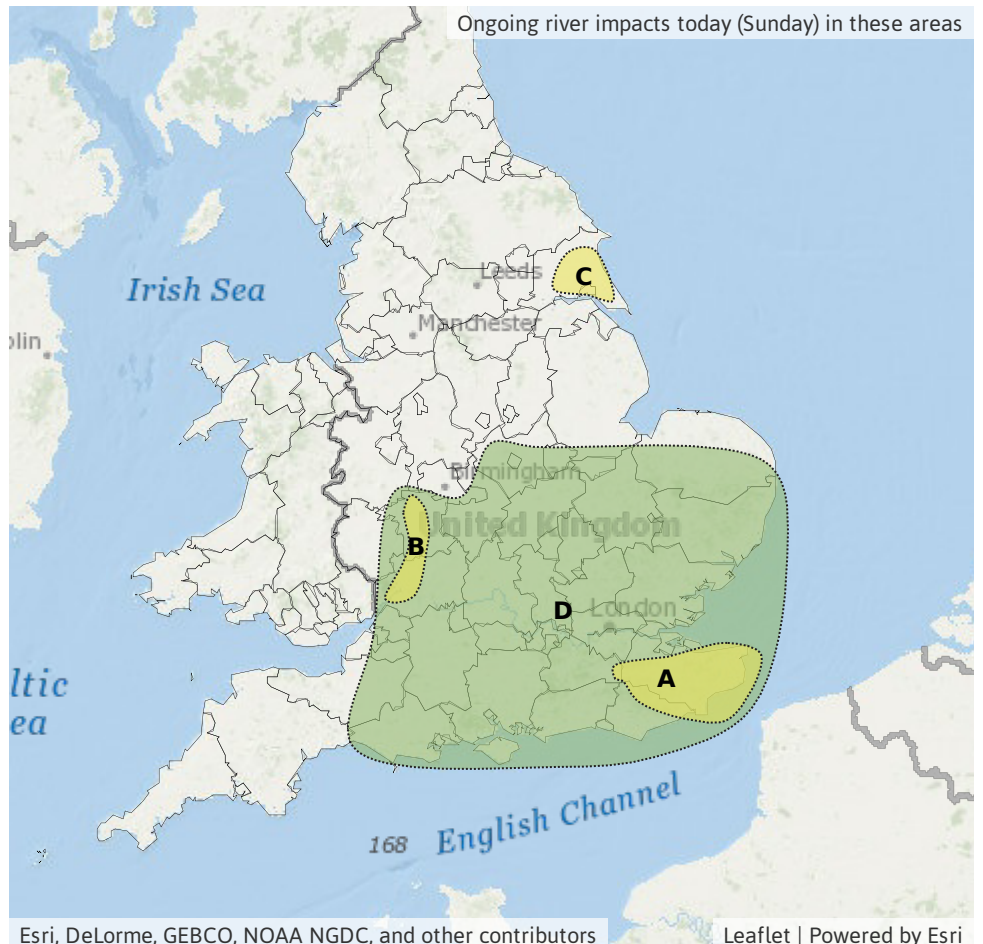
RISK AREA D

Impact **MINOR**
Likelihood **LOW**



Source River
Likely duration 1 Day

Localised river impacts following recent rainfall



Esri, DeLorme, GEBCO, NOAA NGDC, and other contributors

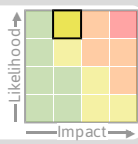
Leaflet | Powered by Esri

Flood Guidance Statement

10:30hrs Sunday 22 December 2019

Specific Area of Concern Map 2: Sunday 22 to Thursday 26 December

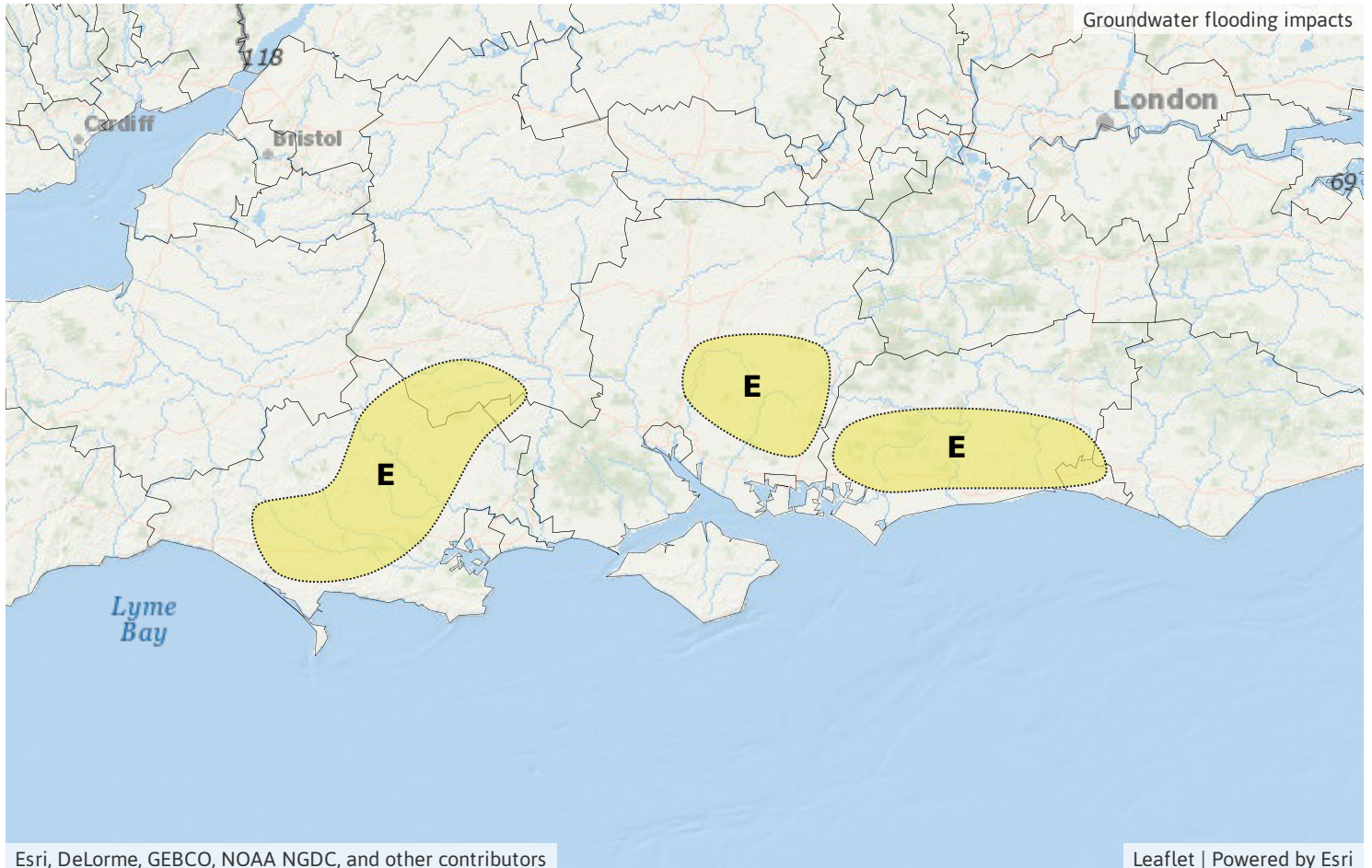
RISK AREA E
Impact **MINOR**
Likelihood **HIGH**



Source Ground

Likely duration 5 + Days

Local groundwater flooding for at least the next five days.



Esri, DeLorme, GEBCO, NOAA NGDC, and other contributors

Leaflet | Powered by Esri

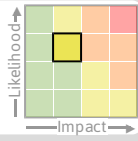
Flood Guidance Statement

10:30hrs Sunday 22 December 2019

Specific Areas of Concern Map 3: Monday 23 to Tuesday 24 December

RISK AREA B

Impact **MINOR**
Likelihood **MEDIUM**

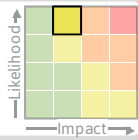


Source River
Likely duration 2 Days

Flooding impacts today and Monday on the lower and middle River Severn.

RISK AREA F

Impact **MINOR**
Likelihood **HIGH**

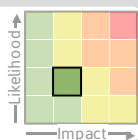


Source River
Likely duration 2 Days

Ongoing river flooding impacts Monday and Tuesday with additional rainfall.

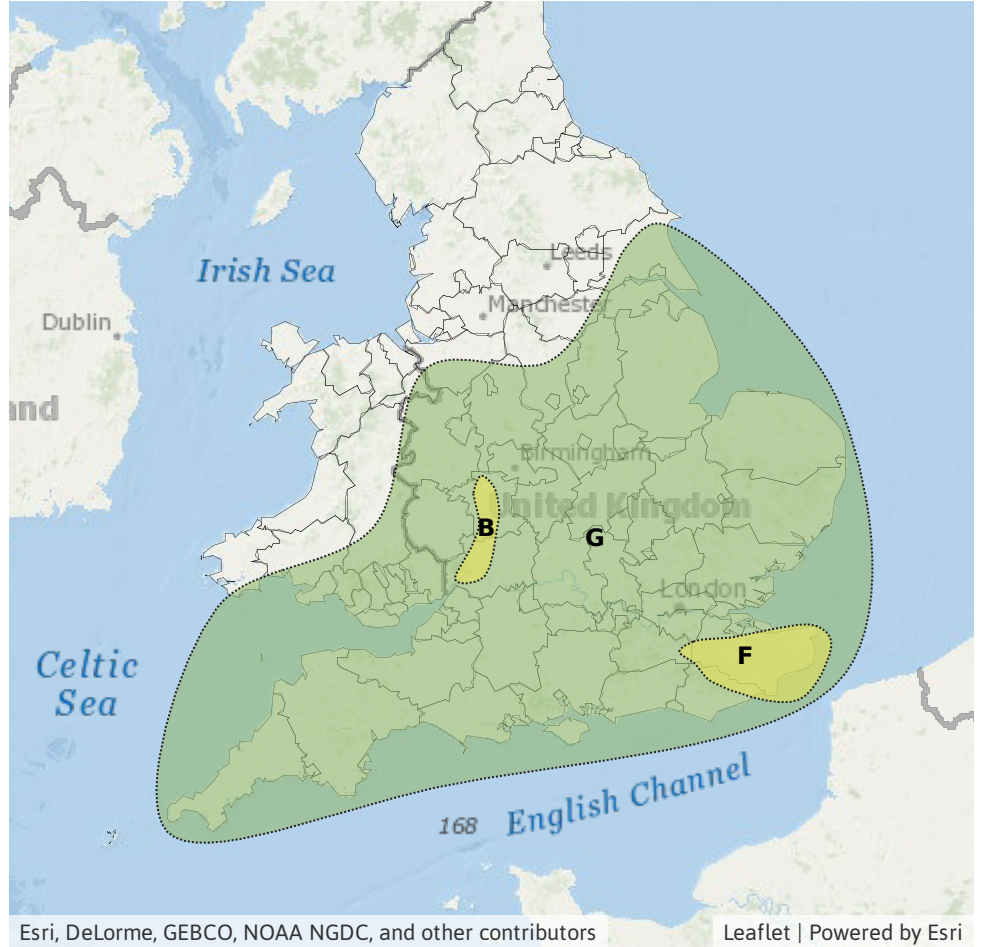
RISK AREA G

Impact **MINOR**
Likelihood **LOW**



Source River Surface
Likely duration 2 Days

Flooding impacts possible from rain on already wet ground and catchments



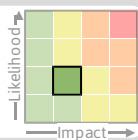
Esri, DeLorme, GEBCO, NOAA NGDC, and other contributors

Leaflet | Powered by Esri

Specific Area of Concern Map 4: Thursday 26 December 2019

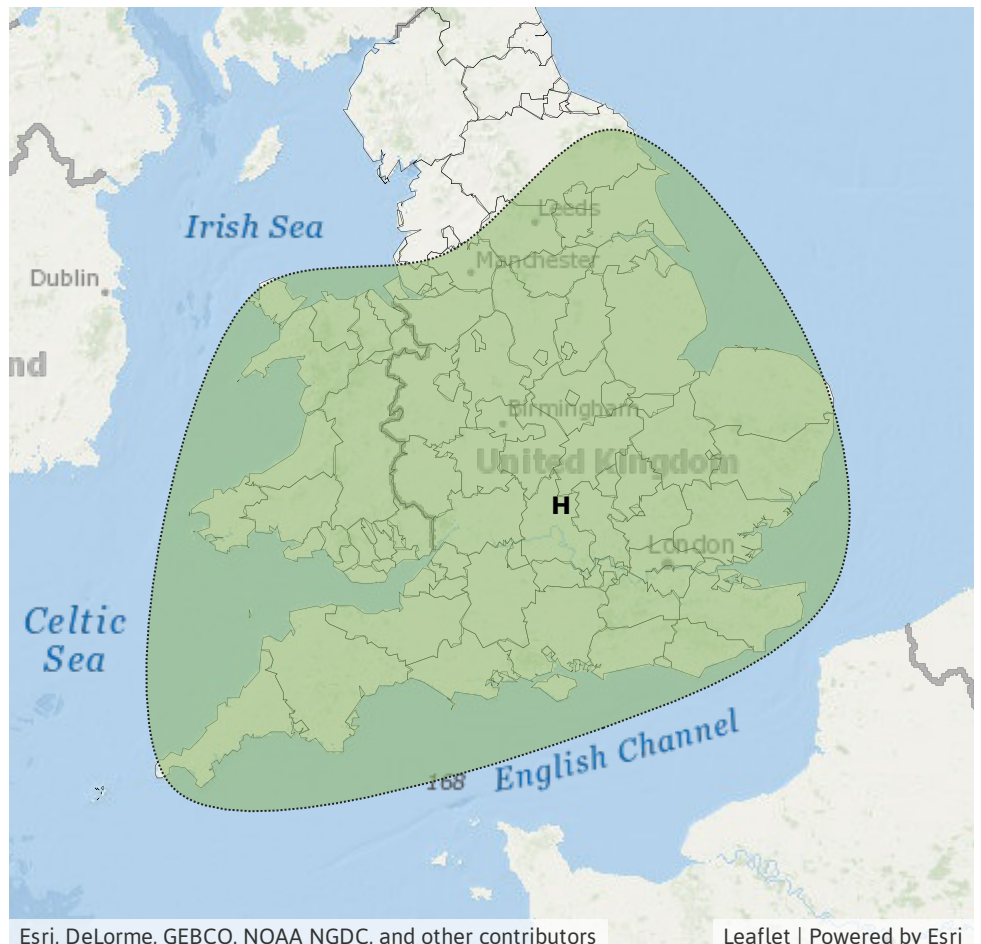
RISK AREA H

Impact **MINOR**
Likelihood **LOW**



Source River Surface
Likely duration 1 Day

Widespread rainfall on sensitive catchments



Esri, DeLorme, GEBCO, NOAA NGDC, and other contributors

Leaflet | Powered by Esri

Assessment of flood risk



Rivers

The river flood risk is LOW today (Sunday), Monday and Tuesday.

As rivers continue to respond to recent rainfall, significant river flooding is possible in parts of south-east England today (Sunday). Minor river flooding impacts are also probable in parts of the East Riding of Yorkshire today (Sunday) and are possible elsewhere across other parts of central and southern England. Minor impacts along the middle and lower River Severn are probable today and Monday.

Minor river flooding impacts are possible in parts of England and Wales on Monday and Tuesday due to further outbreaks of rain, and are expected to continue through sensitive catchments in the south-east of England.

Minor river flooding impacts are then possible across parts of England and Wales on Thursday in response to widespread rainfall.



Groundwater

The groundwater flood risk is LOW for the next five days.

Local minor groundwater flooding impacts are expected through parts of the south of England (as shown on Area of Concern Map 2) from today (Sunday) for at least the next five days. Levels will continue to rise in these areas due to recent and further rain. Groundwater levels are also high in North Lincolnshire and parts of Oxfordshire although impacts here are still minimal.



Surface water

The surface water flood risk is VERY LOW for the next five days.

Minor surface water flooding impacts are possible in parts of England and Wales later on Monday and into Tuesday, and again on Thursday, due to further spells of rain on already wet ground.



Coastal/Tidal

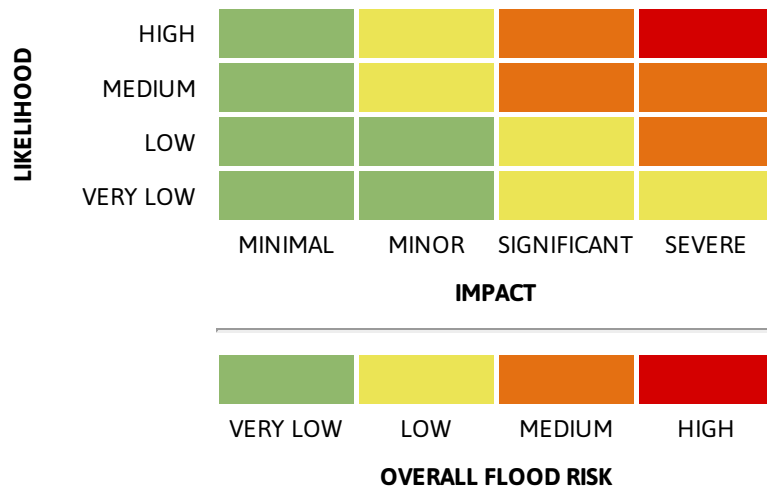
The coastal/tidal flood risk is VERY LOW for the next five days.

Minor coastal flooding impacts are possible but not expected for parts of the English Channel coast at times from today (Sunday) through to Tuesday. This is due to the possibility of strong winds and large waves leading to some local spray and wave overtopping. Further minor impacts are possible but not expected in these areas on Thursday.

6-10 day forecast

Groundwater levels expected to continue rising in Dorset, bringing a risk of further impacts.

Flood risk matrix



Summary of potential impacts

MINIMAL

Isolated and minor flooding of low-lying land and roads
Isolated spray/wave on coastal promenades
Little or no disruption to travel, but wet road surfaces

MINOR

Localised flooding of land and roads
Flooding affecting individual properties
Disruption to travel and key sites in flood plans

SIGNIFICANT

Flooding affecting parts of communities
Possible danger to life and damage to buildings/structures
Disruption to travel and key sites in flood plans

SEVERE

Danger to life, severe disruption to travel
Widespread flooding affecting whole communities
Widespread disruption or loss of infrastructure
Large scale evacuation of properties possible

Next statement due **10:30hrs Monday 23 December 2019 (all times are local)**

Contact details **Flood Forecasting Centre Duty Hydrometeorologist - 0300 12345 01**

More information <http://www.ffc-environment-agency.metoffice.gov.uk>