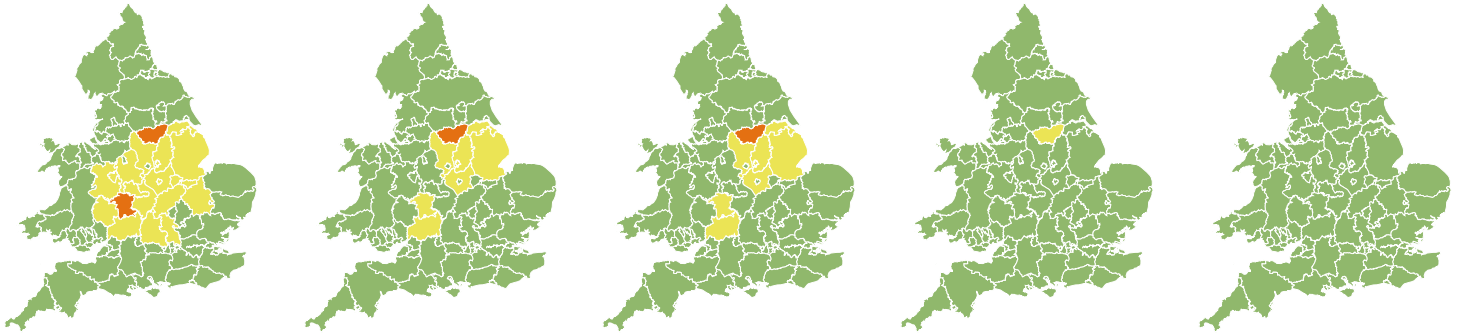


Flood Guidance Statement

10:30hrs Saturday 16 November 2019



Saturday

16 Nov 2019 10:30-23:59
Trend since last FGS

Steady →

Sunday

17 Nov 2019

Steady →

Monday

18 Nov 2019

Steady →

Tuesday

19 Nov 2019

Steady →

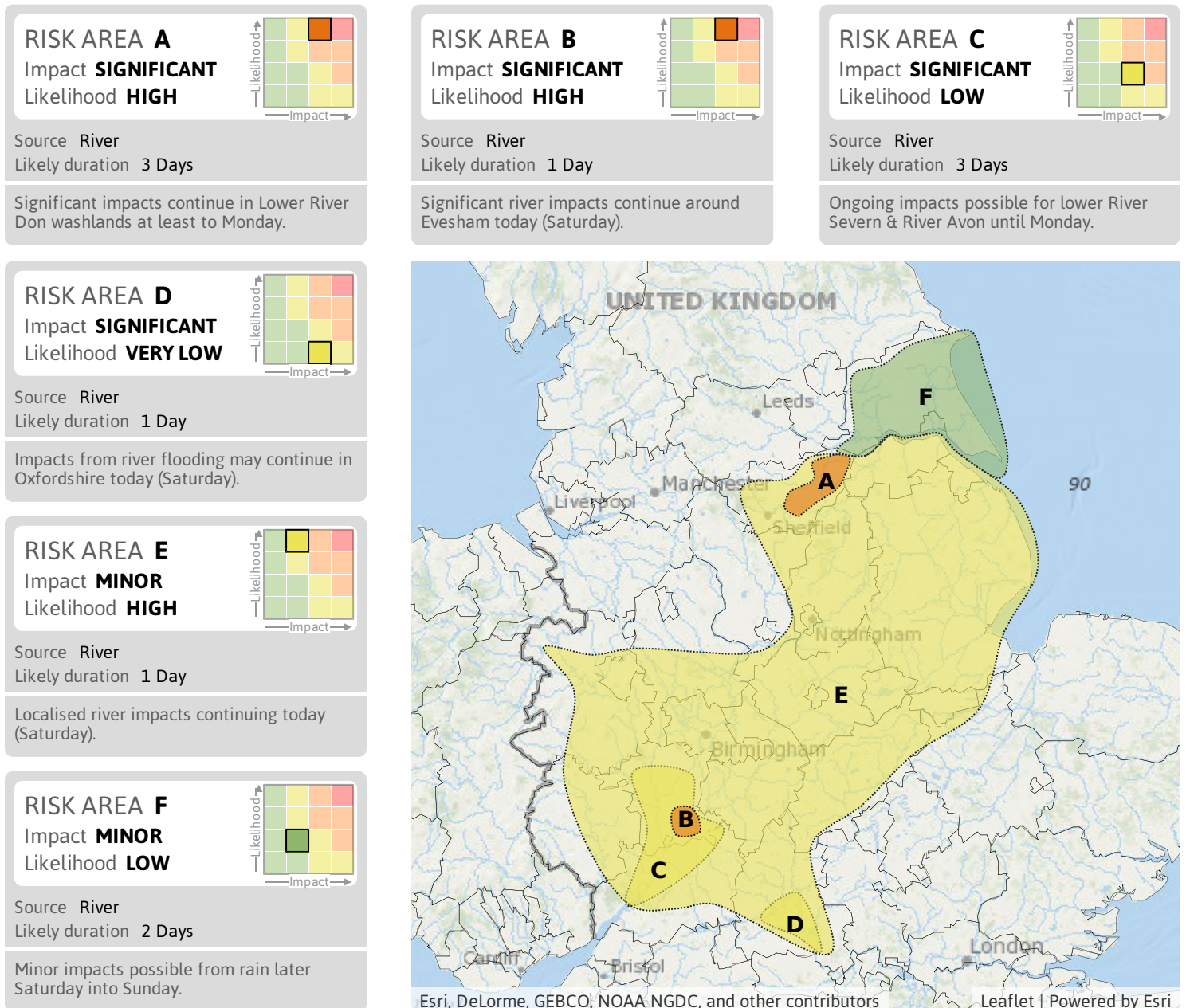
Wednesday

20 Nov 2019

Steady →

Ongoing significant river flooding continues in South Yorkshire until Monday and Worcestershire today (Saturday). Significant river flooding is possible elsewhere until Monday with some minor flooding expected. See end of FGS for 6-10 day.

Specific Areas of Concern Map 1: Saturday 16 November 2019

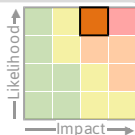


Flood Guidance Statement

10:30hrs Saturday 16 November 2019

Specific Areas of Concern Map 2: Sunday 17 and Monday 18 November

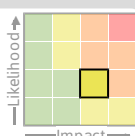
RISK AREA A
Impact **SIGNIFICANT**
Likelihood **HIGH**



Source River
Likely duration 3 Days

Significant impacts continue in Lower River Don washlands at least to Monday.

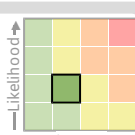
RISK AREA C
Impact **SIGNIFICANT**
Likelihood **LOW**



Source River
Likely duration 3 Days

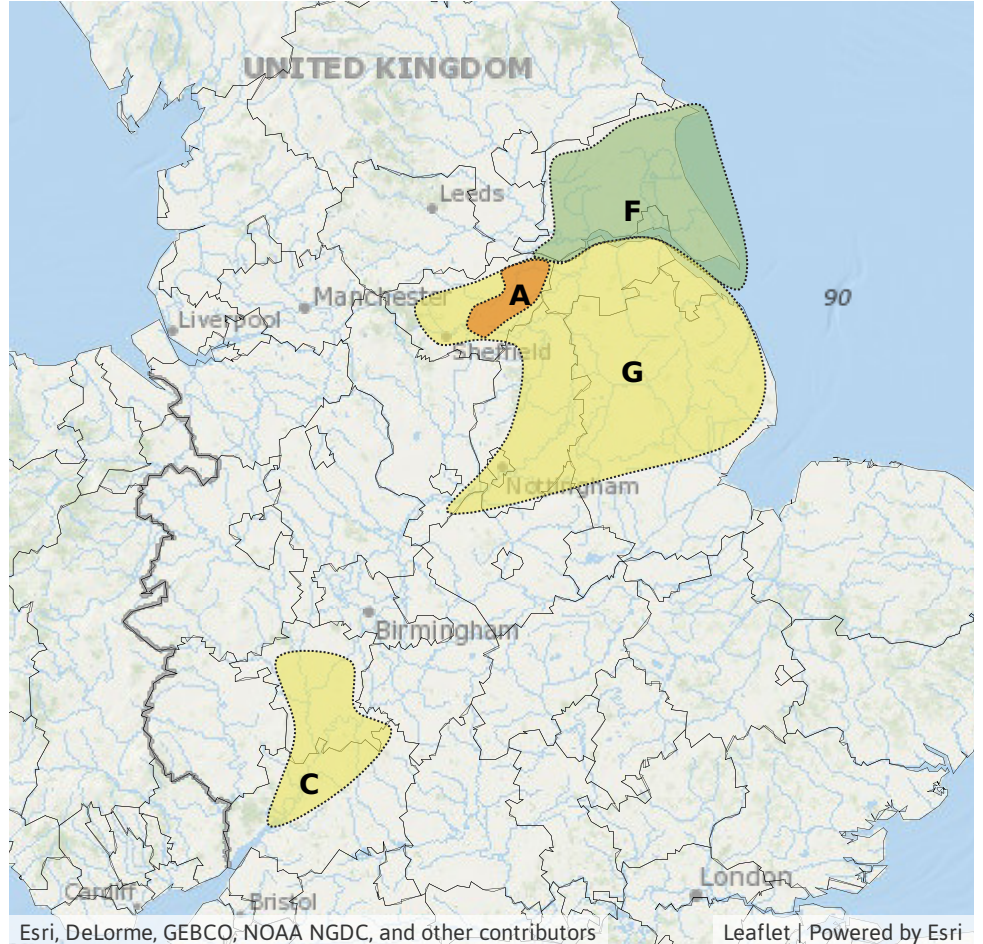
Ongoing impacts possible for lower River Severn & River Avon until Monday.

RISK AREA F
Impact **MINOR**
Likelihood **LOW**



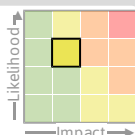
Source River
Likely duration 2 Days

Minor impacts possible from rain later Saturday into Sunday.



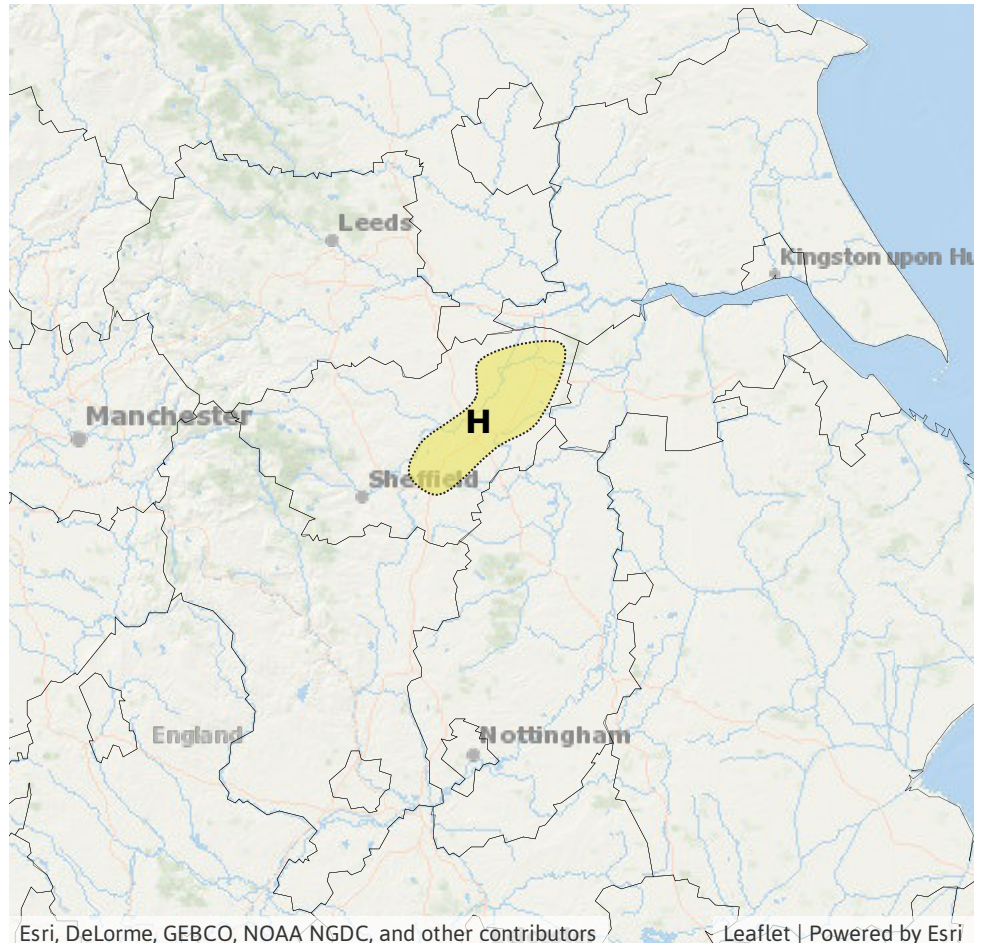
Specific Areas of Concern Map 3: Tuesday 19 November

RISK AREA H
Impact **MINOR**
Likelihood **MEDIUM**



Source River
Likely duration 1 Day

Minor impacts probably continue around the lower River Don on Tuesday.



Assessment of flood risk



Rivers

The overall river flood risk is MEDIUM for today (Saturday) until Monday.

River flood impacts continue across many areas due to previous rainfall. Significant river flooding impacts are ongoing in South Yorkshire around the Lower River Don until Monday, reducing to minor impacts for Tuesday. Significant river flooding impacts are also ongoing in Evesham in Worcestershire today. Significant river flooding impacts are also possible in parts of Gloucestershire and Worcestershire today until Monday and are possible but not expected in Oxfordshire today.

Minor river flooding is also expected across other parts of the Midlands and East Yorkshire today, as rivers are still reacting to recent rain, and will probably continue to impact other parts of South Yorkshire, as well as Lincolnshire and parts of the north Midlands until Monday.

Minor river flooding is possible but not expected across East Yorkshire later today and tomorrow (Sunday) due to further rain falling on sensitive catchments.



Surface water

The surface water flood risk is now VERY LOW for the next five days.

Minor surface water flooding is possible but not expected across parts of the north Midlands, Lincolnshire and East Yorkshire tomorrow (Sunday) due to further rain falling on already saturated ground.



Groundwater

The groundwater flood risk is VERY LOW for the next five days.

Minor groundwater flooding impacts are possible but not expected in North Lincolnshire during the next five days.



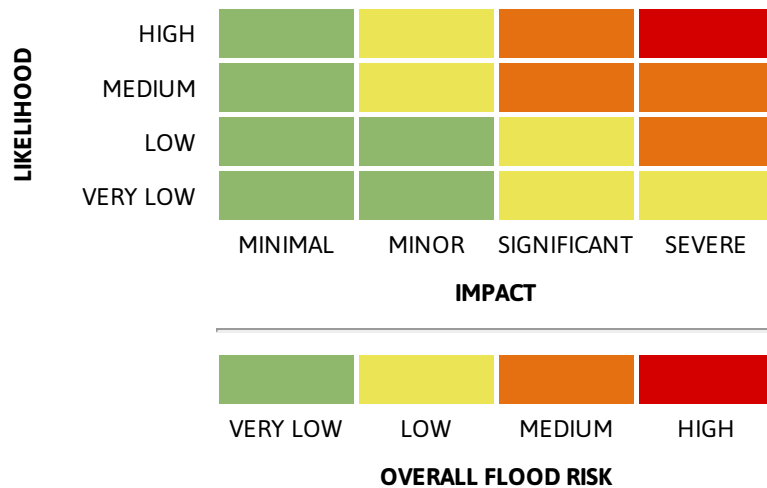
Coastal/Tidal

The coastal/tidal flood risk is VERY LOW for the next five days.

6-10 day forecast

Periods of rain and showers may lead to further inland flooding impacts if they fall over saturated catchments.

Flood risk matrix



Summary of potential impacts

MINIMAL

Isolated and minor flooding of low-lying land and roads
Isolated spray/wave on coastal promenades
Little or no disruption to travel, but wet road surfaces

MINOR

Localised flooding of land and roads
Flooding affecting individual properties
Disruption to travel and key sites in flood plans

SIGNIFICANT

Flooding affecting parts of communities
Possible danger to life and damage to buildings/structures
Disruption to travel and key sites in flood plans

SEVERE

Danger to life, severe disruption to travel
Widespread flooding affecting whole communities
Widespread disruption or loss of infrastructure
Large scale evacuation of properties possible

Next statement due **15:00hrs Saturday 16 November 2019 (all times are local)**

Contact details **Flood Forecasting Centre Duty Hydrometeorologist - 0300 12345 01**

More information <http://www.ffc-environment-agency.metoffice.gov.uk>