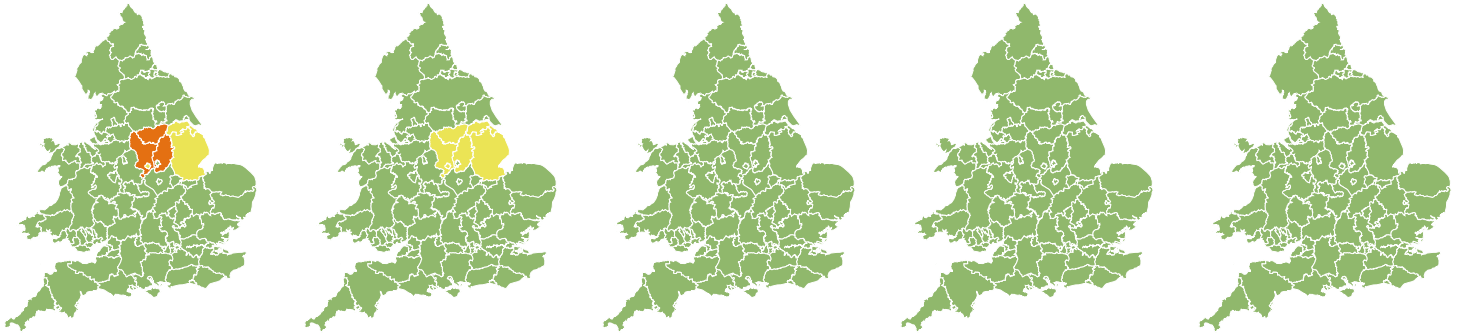


Flood Guidance Statement

10:30hrs Friday 08 November 2019



Friday

8 Nov 2019 10:30-23:59
Trend since last FGS

Increased ↑

Saturday

9 Nov 2019

Increased ↑

Sunday

10 Nov 2019

Increased ↑

Monday

11 Nov 2019

Increased ↑

Tuesday

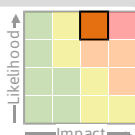
12 Nov 2019

Increased ↑

Ongoing significant river flooding impacts in parts of central, north and east England today with minor river flooding expected today into tomorrow. Minor impacts are possible more widely Saturday and Sunday. See end of FGS for 6-10 day forecast.

Specific Areas of Concern Map 1: Friday 8 and Saturday 9 November 2019

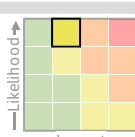
RISK AREA A
Impact **SIGNIFICANT**
Likelihood **HIGH**



Source River
Likely duration 1 Day

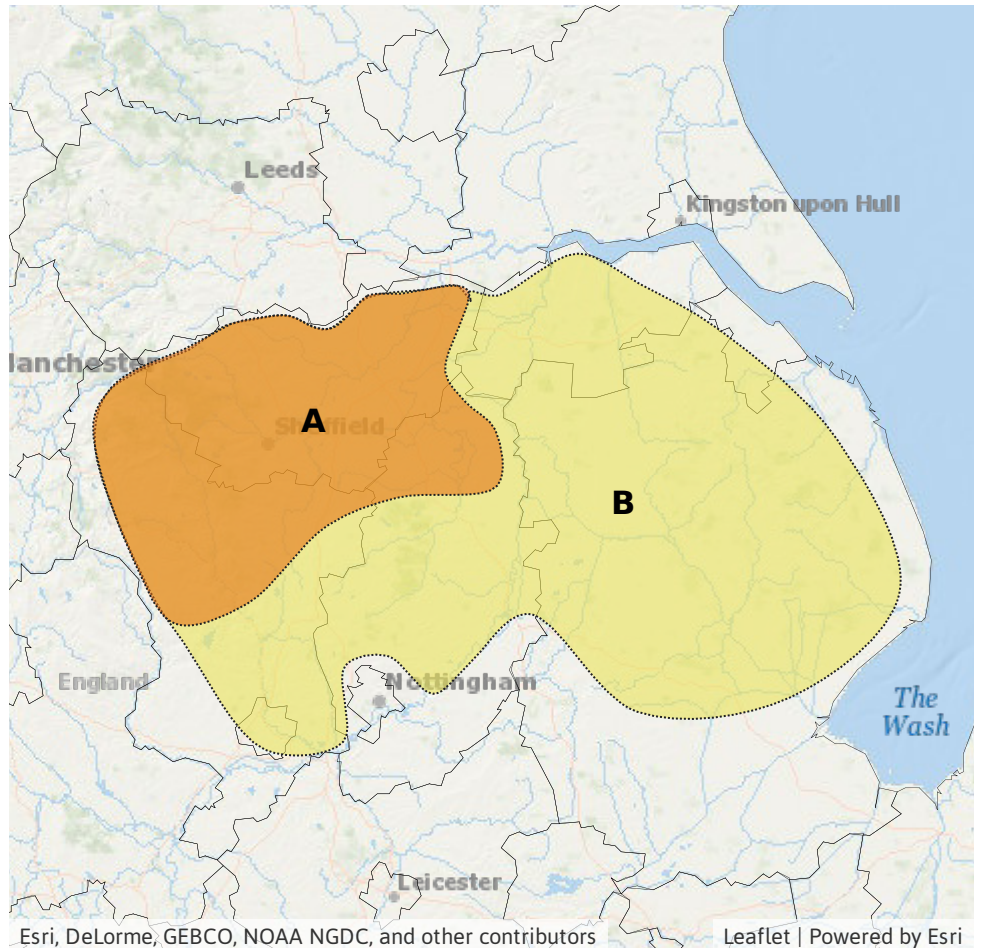
Ongoing significant river flooding impacts on Friday. Minor impacts on Saturday.

RISK AREA B
Impact **MINOR**
Likelihood **HIGH**



Source River
Likely duration 2 Days

Ongoing minor river flooding impacts.

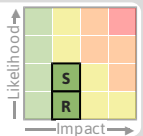


Flood Guidance Statement

10:30hrs Friday 08 November 2019

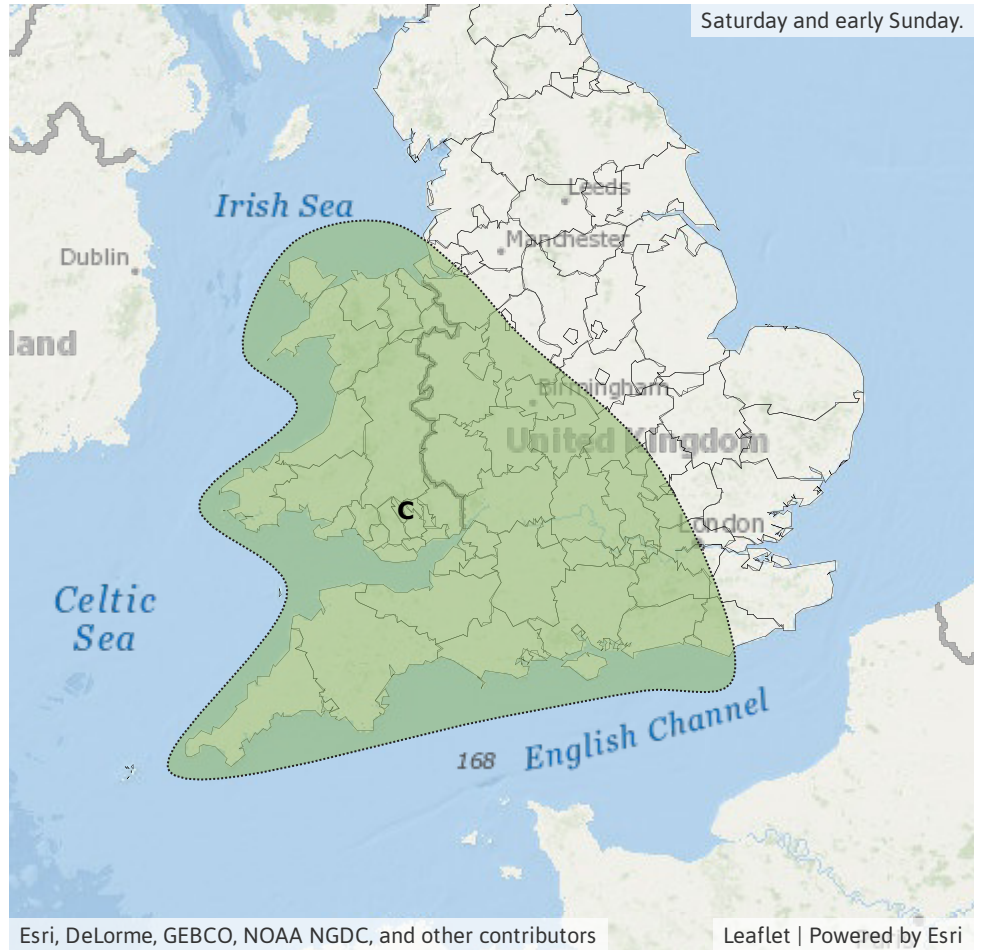
Specific Areas of Concern Map 2: Saturday 9 and Sunday 10 November 2019

RISK AREA C
Impact **MINOR**
Likelihood **LOW**



Source River Surface
Likely duration 2 Days

Rain falling on saturated ground.



Assessment of flood risk



Rivers

The river flood risk is MEDIUM today (Friday) and LOW tomorrow (Saturday).

Ongoing significant river flooding impacts are expected today in South Yorkshire, Nottinghamshire and Derbyshire as rivers continue to respond to the large rainfall amounts of the last 24 hours.

Minor river flooding impacts are expected today and tomorrow in South Yorkshire, Nottinghamshire, Lincolnshire and Derbyshire as river levels drop.

Bands of rain or heavy showers will fall on saturated ground across parts of Wales and the south and west of England at times. Minor river flooding impacts are possible across parts of England and Wales on Saturday and possible but not expected elsewhere in the north of England today (Friday) and more widely Sunday until Tuesday.



Surface water

The surface water flood risk is VERY LOW for the next five days.

Bands of rain or heavy showers will fall on saturated ground across parts of Wales and the south and west of England at times. Minor surface water flooding impacts are possible from Saturday into early Sunday, and are possible but not expected on Monday and Tuesday.



Coastal/Tidal

The coastal/tidal flood risk is VERY LOW despite strong winds and large waves at times.



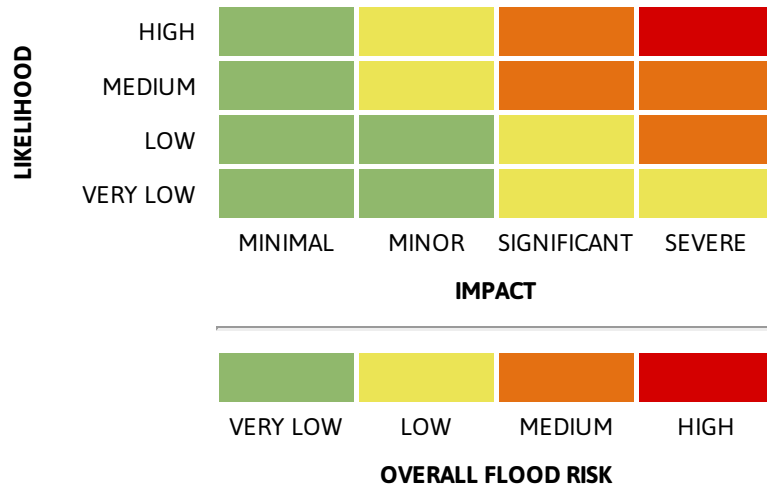
Groundwater

The groundwater flood risk is VERY LOW for the next five days.

6-10 day forecast

River and surface water flooding impacts could occur if forecast heavy rain during this period falls on already saturated catchments.

Flood risk matrix



Summary of potential impacts

MINIMAL

Isolated and minor flooding of low-lying land and roads
Isolated spray/wave on coastal promenades
Little or no disruption to travel, but wet road surfaces

MINOR

Localised flooding of land and roads
Flooding affecting individual properties
Disruption to travel and key sites in flood plans

SIGNIFICANT

Flooding affecting parts of communities
Possible danger to life and damage to buildings/structures
Disruption to travel and key sites in flood plans

SEVERE

Danger to life, severe disruption to travel
Widespread flooding affecting whole communities
Widespread disruption or loss of infrastructure
Large scale evacuation of properties possible

Next statement due **15:00hrs Friday 08 November 2019 (all times are local)**

Contact details **Flood Forecasting Centre Duty Hydrometeorologist - 0300 12345 01**

More information <http://www.ffc-environment-agency.metoffice.gov.uk>