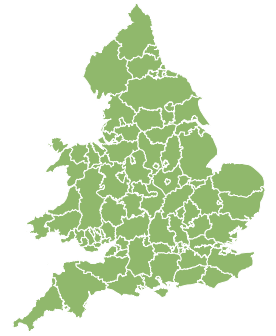
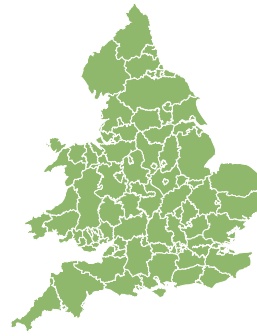
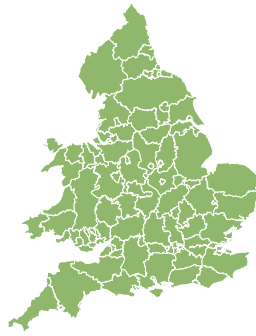
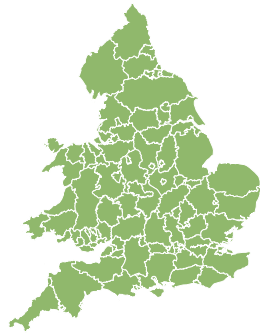
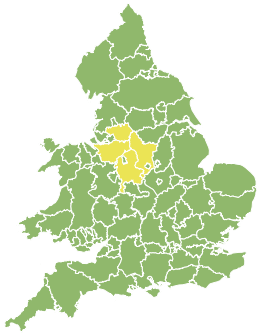


Flood Guidance Statement

10:30hrs Thursday 01 August 2019



Thursday

1 Aug 2019 10:30-23:59
Trend since last FGS

Increased ↑

Friday

2 Aug 2019

Steady →

Saturday

3 Aug 2019

Steady →

Sunday

4 Aug 2019

Increased ↑

Monday

5 Aug 2019

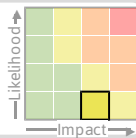
Steady →

Significant surface water and river flooding impacts are possible but not expect in parts of northern England today, with minor impacts possible elsewhere. The overall flood risk is LOW.

Specific Areas of Concern Map 1: Thursday 1 August

RISK AREA A

Impact **SIGNIFICANT**
Likelihood **VERY LOW**

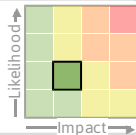


Source River Surface
Likely duration 1 Day

Catchment sensitivity after recent flooding.
Potential for heavy showers.

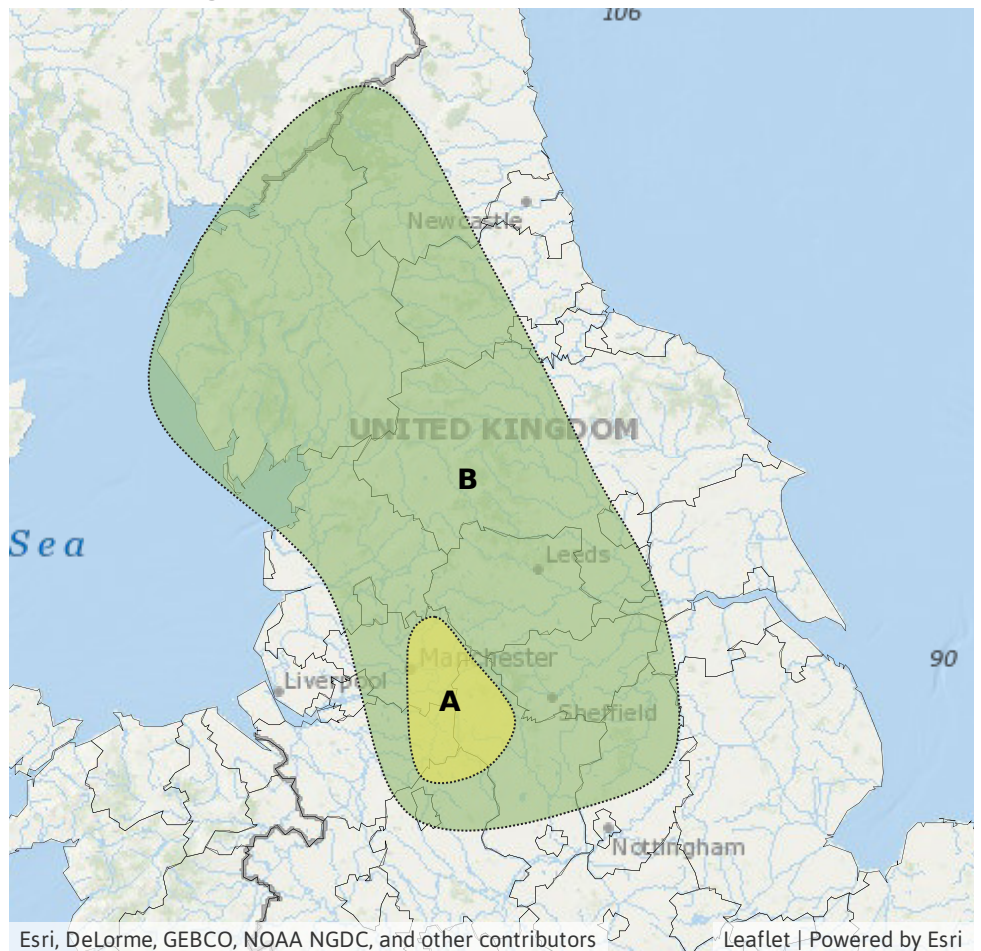
RISK AREA B

Impact **MINOR**
Likelihood **LOW**



Source River Surface
Likely duration 1 Day

Potential for heavy showers.



Assessment of flood risk



Surface water

The surface water flood risk is LOW.

Significant surface water flooding impacts are possible but not expected today in Area A of AOC Map 1. This is due to the potential for heavy showers to occur over wet ground/sensitive catchments. In other parts of northern England, minor surface water flooding impacts are possible.

Minor surface water flooding impacts are possible but not expected in parts of northern England on Sunday.



Rivers

The river flood risk is LOW.

Significant river flooding impacts are possible but not expected in Area A of AOC Map 1. This is due to the potential for heavy showers to occur over wet ground/sensitive catchments. In other parts of northern England, minor surface water flooding impacts are possible.

Minor river flooding impacts possible but not expected in parts of northern England on Sunday due to further heavy showers.



Coastal/Tidal

The coastal/tidal flood risk is VERY LOW for the next five days, despite a period of spring tides peaking over the weekend.



Groundwater

The groundwater flood risk is VERY LOW for the next five days.

Flood risk matrix



Summary of potential impacts

MINIMAL

Isolated and minor flooding of low-lying land and roads
Isolated spray/wave on coastal promenades
Little or no disruption to travel, but wet road surfaces

MINOR

Localised flooding of land and roads
Flooding affecting individual properties
Disruption to travel and key sites in flood plans

SIGNIFICANT

Flooding affecting parts of communities
Possible danger to life and damage to buildings/structures
Disruption to travel and key sites in flood plans

SEVERE

Danger to life, severe disruption to travel
Widespread flooding affecting whole communities
Widespread disruption or loss of infrastructure
Large scale evacuation of properties possible

Next statement due **10:30hrs Friday 02 August 2019 (all times are local)**

Contact details **Flood Forecasting Centre Duty Hydrometeorologist - 0300 12345 01**

More information <http://www.ffc-environment-agency.metoffice.gov.uk>