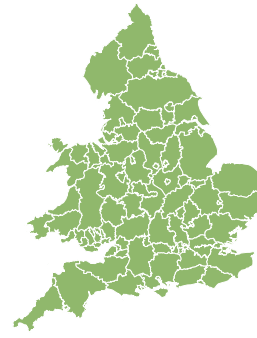
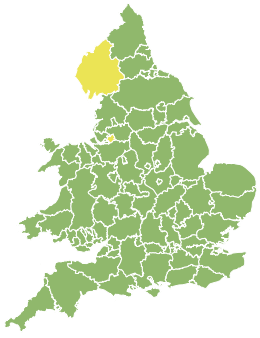


# Flood Guidance Statement

10:30hrs Friday 22 March 2019



Friday

22 Mar 2019 10:30-23:59  
Trend since last FGS

Increased



Saturday

23 Mar 2019

Steady



Sunday

24 Mar 2019

Steady



Monday

25 Mar 2019

Steady



Tuesday

26 Mar 2019

Steady



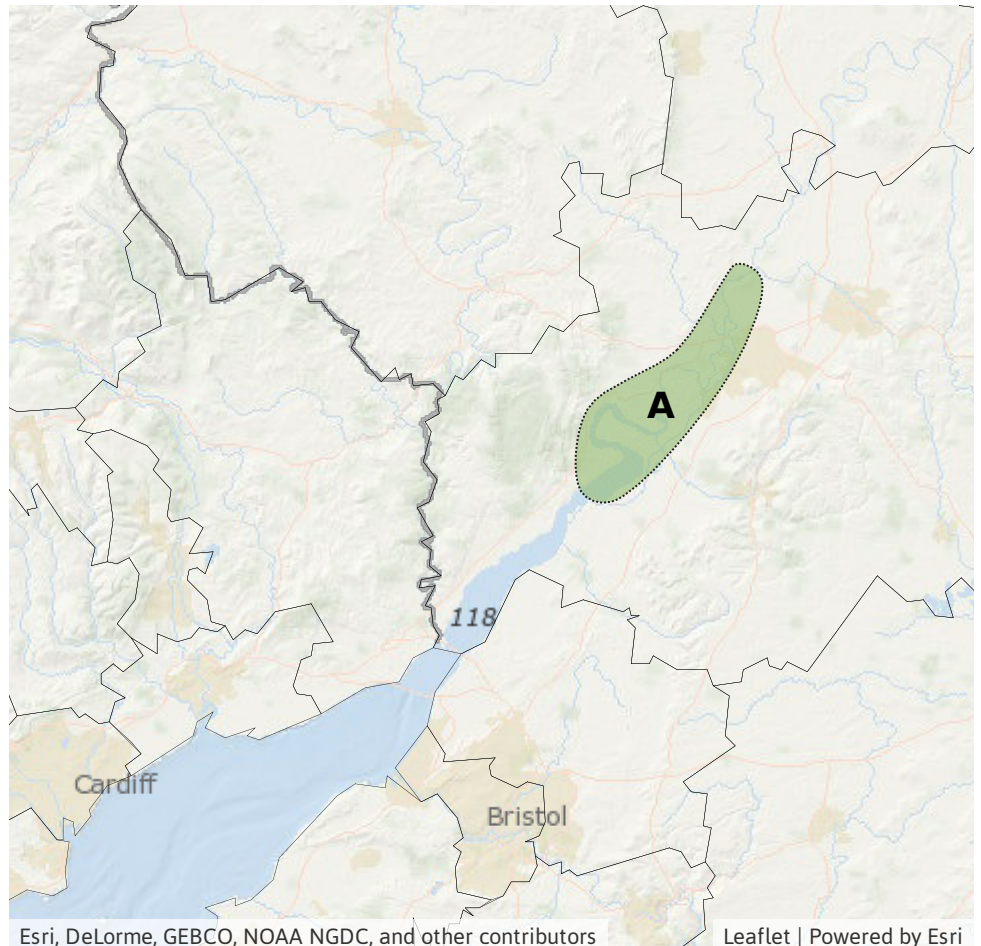
The overall flood risk is LOW. Minor coastal flooding impacts are probable for localised stretches of the north west coast of England today (Friday).

## Specific Areas of Concern Map 1 - Friday 22 and Saturday 23 March.

**RISK AREA A**  
Impact **MINOR**  
Likelihood **LOW**

Source River  
Likely duration 2 Days

Lower River Severn may see high levels until Saturday.

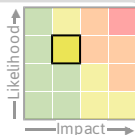


# Flood Guidance Statement

10:30hrs Friday 22 March 2019

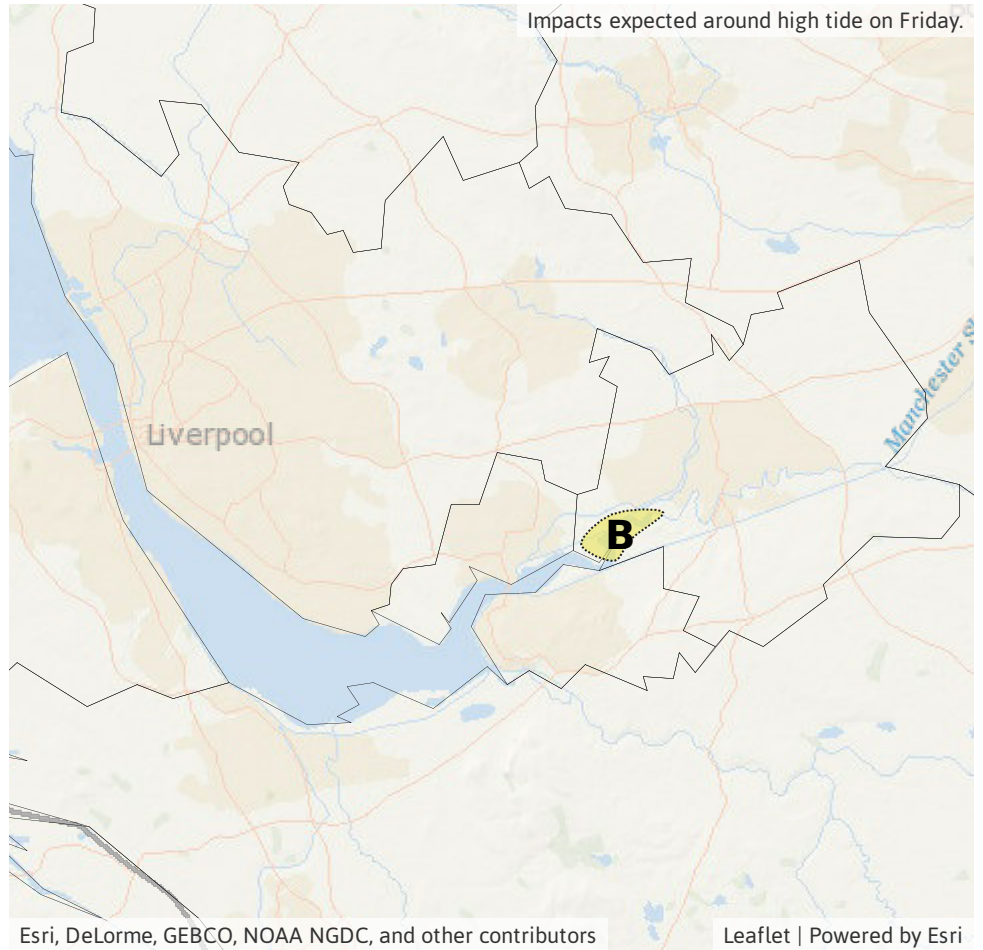
### Specific Areas of Concern Map 2 - Friday 22 March.

**RISK AREA B**  
Impact **MINOR**  
Likelihood **MEDIUM**



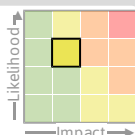
Source Coastal/Tidal  
Likely duration 1 Day

Impacts expected around high water on Friday.



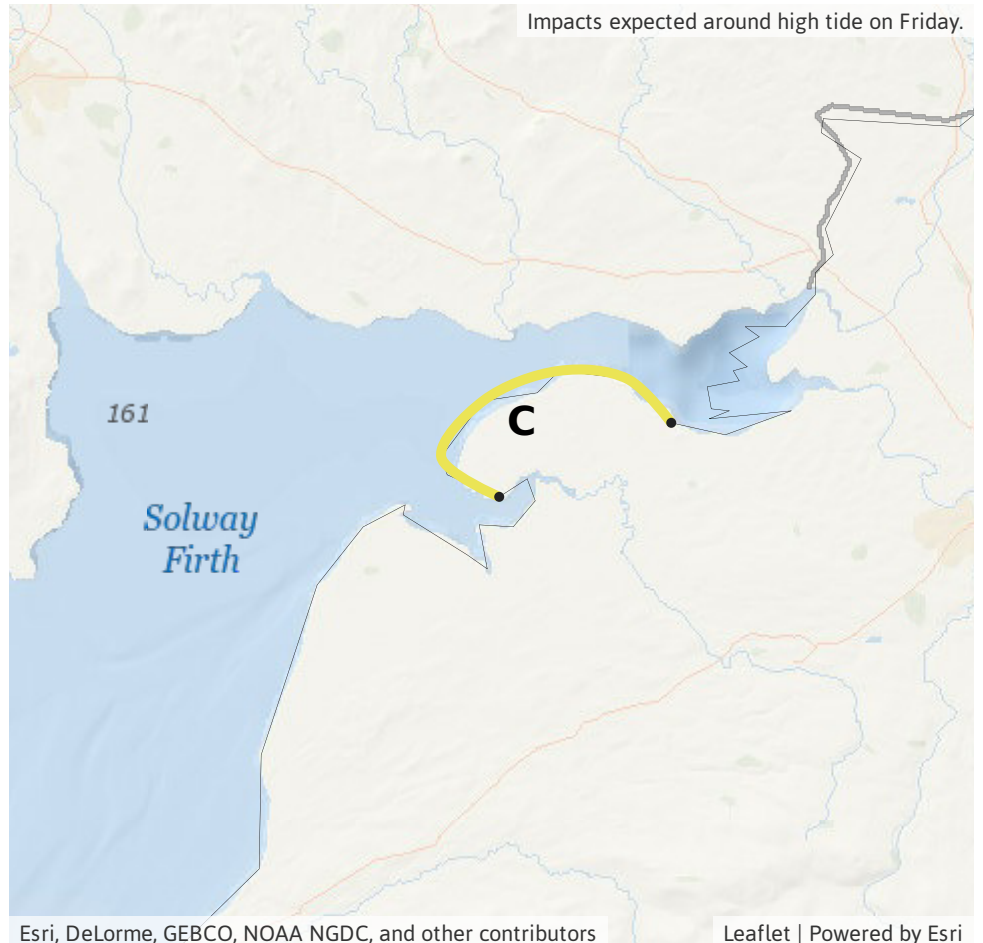
### Specific Areas of Concern Map 3 - Friday 22 March

**RISK AREA C**  
Impact **MINOR**  
Likelihood **MEDIUM**



Source Coastal/Tidal  
Likely duration 1 Day

Impacts expected around high water on Friday.



## Assessment of flood risk



### Coastal/Tidal

---

The coastal/tidal flood risk is LOW today (Friday).

Minor coastal flooding impacts are probable for localised stretches of the north west coast of England today (Friday) due to high tides.

Minor flooding impacts are also possible but not expected at times during Friday and Saturday along the coasts of Yorkshire, North East England, East Anglia, and the Wye and Severn estuaries in Gloucestershire. This may continue in places along the Yorkshire coast into Sunday.

Impacts may include flooding of prone individual properties and low lying land.



### Rivers

---

The overall river flood risk is VERY LOW.

Minor river flooding impacts are possible for the lower reaches of the River Severn today (Friday) and Saturday as high river levels interact with high tide levels.

Minor flooding impacts are also possible but not expected along the Lower River Trent today only.



### Surface water

---

The surface water flood risk is VERY LOW for the next five days.



### Groundwater

---

The groundwater flood risk is VERY LOW for the next five days.

### Flood risk matrix



### Summary of potential impacts

#### MINIMAL

Isolated and minor flooding of low-lying land and roads  
Isolated spray/wave on coastal promenades  
Little or no disruption to travel, but wet road surfaces

#### MINOR

Localised flooding of land and roads  
Flooding affecting individual properties  
Disruption to travel and key sites in flood plans

#### SIGNIFICANT

Flooding affecting parts of communities  
Possible danger to life and damage to buildings/structures  
Disruption to travel and key sites in flood plans

#### SEVERE

Danger to life, severe disruption to travel  
Widespread flooding affecting whole communities  
Widespread disruption or loss of infrastructure  
Large scale evacuation of properties possible

Next statement due **10:30hrs Saturday 23 March 2019 (all times are local)**

Contact details **Flood Forecasting Centre Duty Hydrometeorologist - 0300 12345 01**

More information **<http://www.ffc-environment-agency.metoffice.gov.uk>**