

Flood Guidance Statement

10:30hrs Thursday 21 March 2019



Thursday

21 Mar 2019 10:30-23:59
Trend since last FGS

Steady →

Friday

22 Mar 2019

Steady →

Saturday

23 Mar 2019

Steady →

Sunday

24 Mar 2019

Steady →

Monday

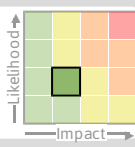
25 Mar 2019

Steady →

The overall flood risk is **VERY LOW**. Minor flooding impacts along the River Severn are possible until Saturday. Minor coastal flooding impacts are possible but not expected at times, for some stretches of coast on Friday and Saturday.

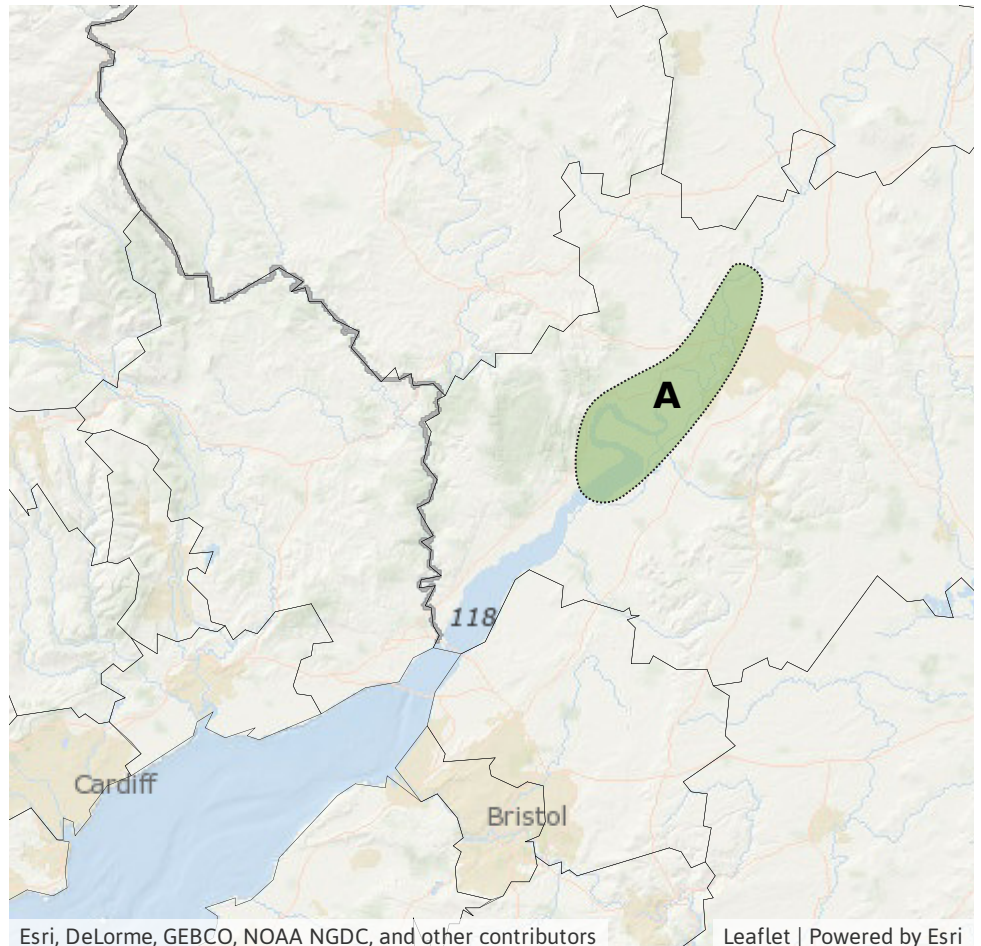
Specific Areas of Concern Map 1 - Thursday 21 to Saturday 23 March.

RISK AREA A
Impact **MINOR**
Likelihood **LOW**



Source River
Likely duration 3 Days

Lower River Severn may see high levels until Saturday.



Assessment of flood risk



Rivers

The overall river flood risk is VERY LOW.

Minor river flooding impacts are possible for the lower reaches of the River Severn from today until Saturday as high river levels interact with high tide levels.



Coastal/Tidal

The coastal/tidal flood risk is VERY LOW for the next five days.

Minor flooding impacts are possible but not expected at times from high tides during Friday and Saturday along the coasts of Yorkshire, North East England, East Anglia, North West England and the Wye and Severn estuaries in Gloucestershire. Impacts may include flooding of prone individual properties and low lying land.



Surface water

The surface water flood risk is VERY LOW for the next five days.



Groundwater

The groundwater flood risk is VERY LOW for the next five days.

Flood risk matrix



Summary of potential impacts

MINIMAL

Isolated and minor flooding of low-lying land and roads
Isolated spray/wave on coastal promenades
Little or no disruption to travel, but wet road surfaces

MINOR

Localised flooding of land and roads
Flooding affecting individual properties
Disruption to travel and key sites in flood plans

SIGNIFICANT

Flooding affecting parts of communities
Possible danger to life and damage to buildings/structures
Disruption to travel and key sites in flood plans

SEVERE

Danger to life, severe disruption to travel
Widespread flooding affecting whole communities
Widespread disruption or loss of infrastructure
Large scale evacuation of properties possible

Next statement due **10:30hrs Friday 22 March 2019 (all times are local)**

Contact details **Flood Forecasting Centre Duty Hydrometeorologist - 0300 12345 01**

More information <http://www.ffc-environment-agency.metoffice.gov.uk>